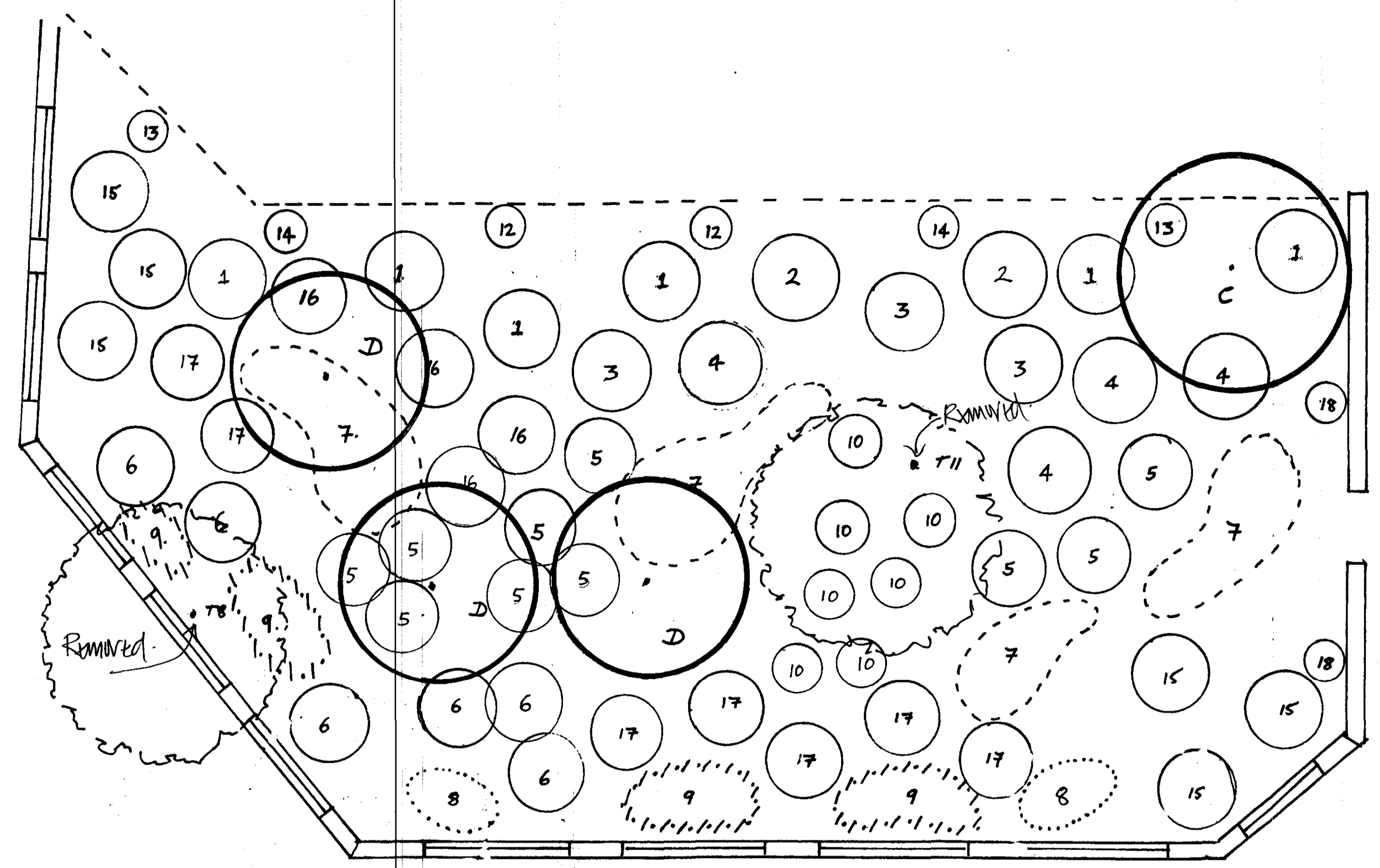


03/14/05

RECEIVED
- 7 FEB 2005
PLANNING



WOODLAND No 2

TREES:-

- A - EXISTING TREES (2) - ALL REMOVED.
- C - BETULA PENDULA 'LACINIATA' (3)
- D - BETULA UTILIS VFR. JACQUELONTII (5) HEAVY STANDARD

SHRUBS:-

- 1 - MANONIA x MEDIA 'CHARITY' (5)
- 2 - PYRACANTHA 'WATEREI' (2)
- 3 - VIBURNUM OPULUS 'ROSEUM' (3)
- 4 - HYDRANGEA PANICULATA 'GRANDIFLORA' (4)
- 5 - SARCOCOCCA CONFUSA (10)
- 6 - GAULTHERIA THURONATA 'SNOW WHITE' (6)
- 15 - DAPHNE ODORA 'AURICOMARGINATA' (6)
- 16 - LEYCESTERIA FORTIOSA (4)
- 17 - ROSA CANINA (7)

PERENNIAL & FERN:-

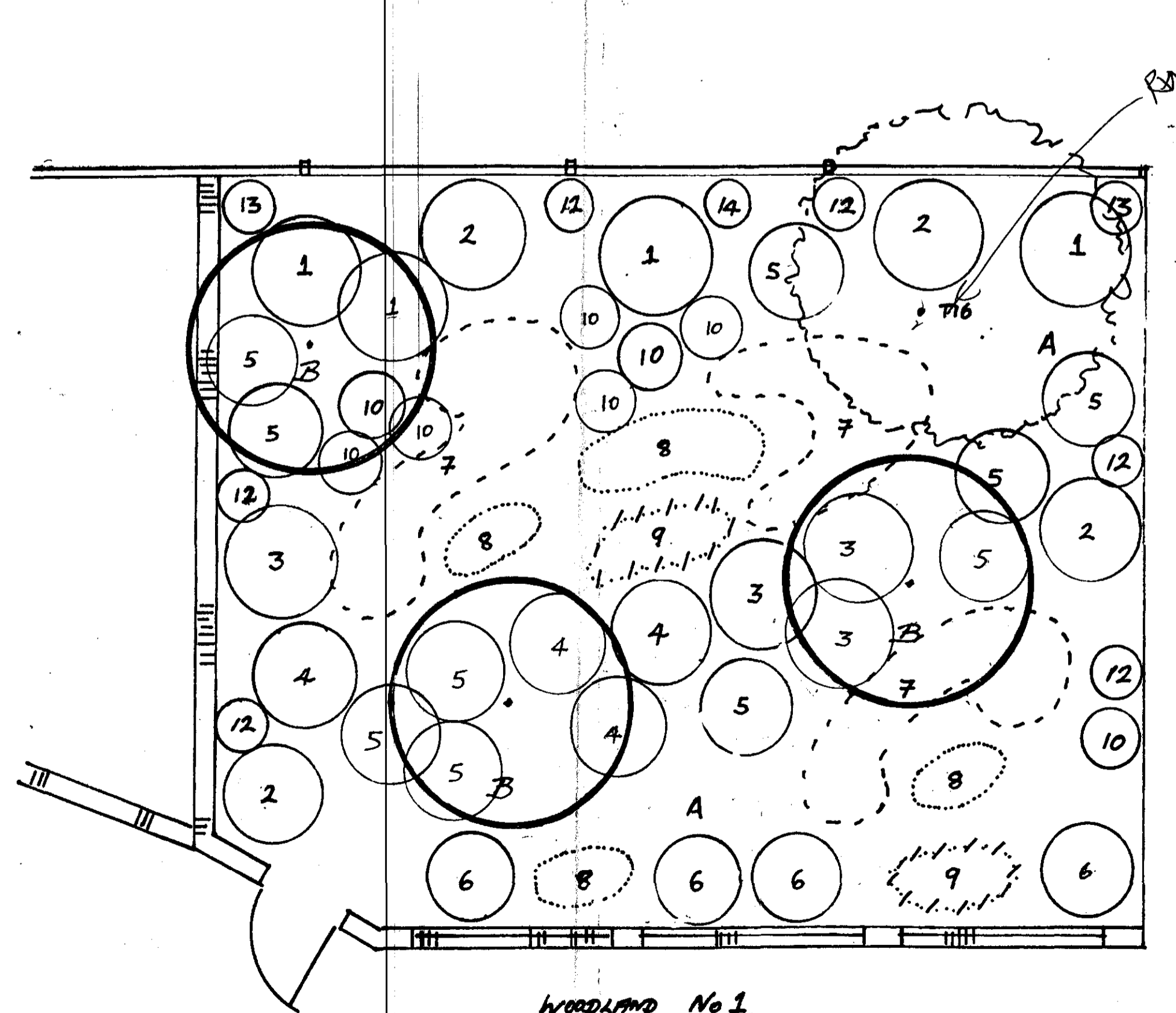
- 7 - DIGITALIS PURPUREA 'ALBAFLORA' - SPACING .5m APPROX (20)
- 8 - IRIS FORTIDISSIMA - SPACING - SPACING .45m APPROX (6)
- 9 - HELLEBORUS ARGUTIFOLIUS - SPACING .5m APPROX (15)
- 10 - DRYOPTERIS FELIX - TIAS (7)

GROUND COVER:-

- HEDERA HELIX 'HIBERNICA' - MIX OF BOTH BETWEEN PLANTINGS.
- CORNUS CANADENSIS - ARRANGE ON SITE

CLIMBERS:-

- 12 - HEDERA LAMARIENSIS 'GLOIRE DE MARQUI' (2)
- 13 - HYDRANGEA PETIOLARIS (2)
- 14 - CLETARIS VITICELLA 'THADDEUS JULIA CORREYON' (2)
- 15 - ROSA 'CLIMBING ROSE BRANNE' (2)



WOODLAND No 1

TREES:-

- A - EXISTING TREES (2) REMOVED.
- B - SALIX FRAGILIS (3) HEAVY STANDARD.

SHRUBS:-

- 1 - MANONIA x MEDIA 'CHARITY' (4)
- 2 - PYRACANTHA 'WATEREI' (4)
- 3 - VIBURNUM OPULUS (4) 'ROSEUM'
- 4 - HYDRANGEA PANICULATA 'GRANDIFLORA' (4)
- 5 - SARCOCOCCA CONFUSA (10)
- 6 - GAULTHERIA THURONATA 'SNOW WHITE' (4)

PERENNIAL & FERN:-

- 7 - DIGITALIS PURPUREA ALBAFLORA (33)
- 8 - IRIS FORTIDISSIMA (18)
- 9 - HELLEBORUS ARGUTIFOLIUS (9)
- 10 - DRYOPTERIS FELIX - TIAS (8)

GROUND COVER

- EXISTING HEDERA - TRANSPLANTED.

CLIMBERS:-

- 12 - HEDERA LAMARIENSIS 'GLOIRE DE MARQUI' (6)
- 13 - HYDRANGEA PETIOLARIS (2)
- 14 - CLETARIS VITICELLA 'THADDEUS JULIA CORREYON' (1)

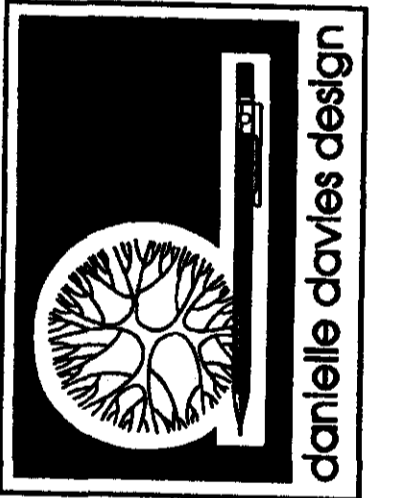
GROUND COVER:-

- HEDERA HELIX 'HIBERNICA' - MIX OF BOTH BETWEEN PLANTINGS.
- CORNUS CANADENSIS - ARRANGE ON SITE

BELLS:-

- TO BOTH WOODLAND BORDERS 1 + 2.
- PLANTED IN SWATHES BETWEEN SHRUBS + PERENNIALS -
- NARCISSUS GERANIUM - SPACING 10-15cm (300)
- NARCISSUS 'ORANGEY' - SPACING 10-15cm (300)
- GALANTHUS NIVALIS 'PURELY GREEN TIP' - SPACING 10cm (250)
- GALANTHUS 'S. PRINCE' - SPACING 10cm (200)
- ANEMONE NEMOROSA 'ROBINSONIANA' - SPACING 10cm (500)

RECEIVED
- 3 FEB 2005
DEARLE & HENDERSON



80 STATION ROAD
HAMPTON - MIDDLESEX
TW12 2AX

DW. No 004 A
(ADDITIONAL NEW TREES)

Project - WILLOWHART RIVERSIDE

Client - RICHMOND BOROUGH COUNCIL

Detail - WOODLAND BORDERS No 1 + 2.

Scale - 1:50

Date - 26th JAN. 2005

North
N

t: 020 8979 7878
f: 020 8979 8118
e: info@greenscheme.com
w: www.greenscheme.com

Do Not Scale From Plan