

80 STATION ROAD  
HAMPTON + MIDDLESEX  
TW12 2AX

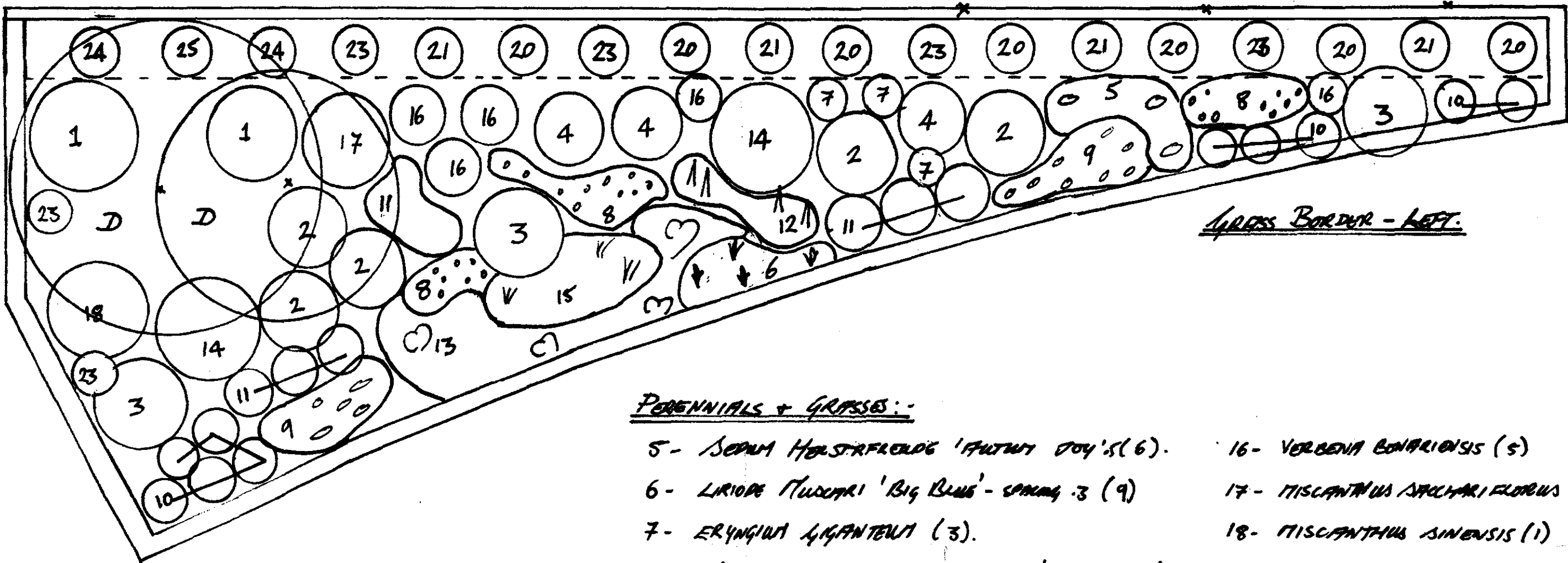
Dw. No 001

Project - TWICKENHAM  
RIVER SIDE  
Client - RICHMOND BOROUGH  
COUNCIL  
Detail - PLANTING PLANS  
GRASS BORDERS.  
Scale - 1:50  
Date - Oct 03.

North  
N

t: 020 8979 7878  
f: 020 8979 8118  
e: info@greenscheme.com  
w: www.greenscheme.com

LONDON BOROUGH OF  
RICHMOND UPOD  
09 SEP 2004  
PLANNING



Grass Border - Left

PERENNIALS + GRASSES:-

- 5- SEDUM HERBSTFREUDE 'AUTUMN JOY' (6)
- 6- LIRIOPE MUSCARI 'BIG BLUE' - SPACING .3 (9)
- 7- ERYNGIUM GIGANTEUM (3)
- 8- ASTER LATERIFLORUM 'HORIZONTALIS' SPACING .45 (13)
- 9- SEDUM 'RUBY SPIN' SPACING .45 APPROX (16)
- 10- HELICHRYSUM ITALICUM (7)
- 11- PENNISETUM ORIENTALE .6m APPROX (9)
- 12- IRIS 'SABLE' - SPACING .5m APPROX (7)
- 13- BERGENIA 'SUNNINGDALE' - SPACING .5 (12)
- 14- LORTADERIA SELLOANA 'PUMILA' (2)
- 15- FESTUCA GLAUCA 'ELIZABH BLUE' - SPACING .3 (9)
- 16- VERBENA BONARIENSIS (5)
- 17- MISCANTHUS SACCHARIFLORUS (1)
- 18- MISCANTHUS SINENSIS (1)

CLIMBERS:-

- 20- TRACHELOSPERMUM JASMINOIDES (9)
- 21- ALBATRA VITICOLA 'MADAM TULLA' (4)
- 22- ROSA CECLIE BRUNNER - CLIMBER (6)
- 23- HEDERA CANARIENSIS 'GLAUCO DE MARANGO' (2)
- 24- HYDRANGEA PETIOLARIS (2)

Grass Border - Right

TREES:-

- B- SALIX FRAGRILIS (2)

SHRUBS:-

- 1- MAHONIA x MEDIA CHARITY (2)
- 2- CORNUS ALBA 'ELEGANTISSIMA' (6)
- 3- PHORNIUM TENAX 'SUNDOWNER' (3)
- 4- BUDDELEIA DAVIDII 'BLACK KNIGHT' (4)

PERENNIALS + GRASSES:-

- 5- SEDUM HERBSTFREUDE 'AUTUMN JOY' SPACING .5 (11)
- 6- LIRIOPE MUSCARI 'BIG BLUE' - SPACING .3m (12)
- 7- ERYNGIUM GIGANTEUM (7)
- 8- ASTER LATERIFLORUM 'HORIZONTALIS' SPACING .45 (19)
- 9- SEDUM 'RUBY SPIN' SPACING .45 APPROX (20)
- 10- HELICHRYSUM ITALICUM (9)
- 11- PENNISETUM ORIENTALE - .6m (6)
- 12- IRIS 'SABLE' - SPACING .5 APPROX (7)

PERENNIALS + GRASSES - CONT.

- 13- BERGENIA 'SUNNINGDALE' - SPACING .5 (16)
- 14- LORTADERIA SELLOANA 'PUMILA' (2)
- 15- FESTUCA GLAUCA 'ELIZABH BLUE' .3 (14)
- 16- VERBENA BONARIENSIS (6)
- 17- MISCANTHUS SACCHARIFLORUS (2)
- 18- MISCANTHUS SINENSIS (1)

CLIMBERS:-

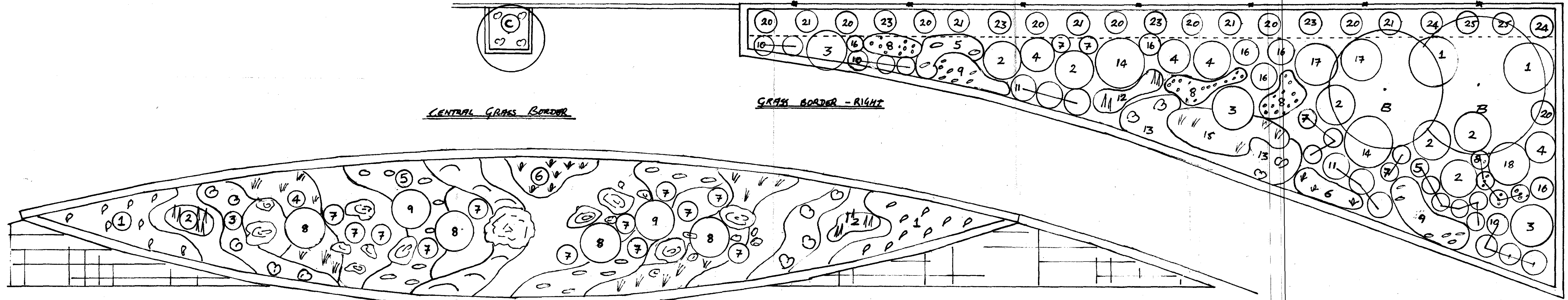
- 20- TRACHELOSPERMUM JASMINOIDES (9)
- 21- ALBATRA VITICOLA 'MADAM TULLA' (4)
- 22- ROSA CECLIE BRUNNER - CLIMBER (6)
- 23- HEDERA CANARIENSIS 'GLAUCO DE MARANGO' (2)
- 24- HYDRANGEA PETIOLARIS (2)

TREES:-

- D- BETULA PENDULA 'LACINATA' (2)

SHRUBS:-

- 1- MAHONIA x MEDIA CHARITY (2)
- 2- CORNUS ALBA 'ELEGANTISSIMA' (6)
- 3- PHORNIUM TENAX 'SUNDOWNER' (3)
- 4- BUDDELEIA DAVIDII 'BLACK KNIGHT' (3)



CENTRAL GRASS BORDER

Grass Border - Right

ADDITIONAL ITEMS:-

- (C) SELECTION OF LARGE Boulders
- (D) + STONES SET IN GRAVEL BED

TREE:-

- C- ALNUS RUBRA (RAISED CENTRAL PLANTER)  
UNDERPLANTING OF BERGENIA - SET 3.

PERENNIAL + GRASSES:-

- D 1- PENNISETUM ORIENTALE - SPACING .6m APPROX (16)
- A 2- IRIS 'SABLE' - SPACING .5m APPROX (13)
- C 3- BERGENIA 'SUNNINGDALE' - SPACING .5m APPROX (30)
- V 4- FESTUCA GLAUCA 'ELIZABH BLUE' - SPACING .3 APPROX (36)
- O 5- SEDUM HERBSTFREUDE 'AUTUMN JOY' - SPACING .6m (36)
- V 6- LIRIOPE MUSCARI 'BIG BLUE' - SPACING .3m (20)
- 7- ERYNGIUM GIGANTEUM (12)

SHRUBS:-

- 8- PHORNIUM TENAX 'SUNDOWNER' (4)
- 9- CORNUS ALBA ELEGANTISSIMA (2)

BULBS:-

TO ALL GRASS BORDERS MID + FORE FRONT -  
PLANTED IN SPACES IN BETWEEN SHRUBS + PERENNIALS.  
FOLIUM GIGANTEUM - SPACING 15-30cm (150)  
MUSCARI PRINCEPS 'BLUE SPIN' - SPACING 10cm (500)

**OFFICE COPY**  
DO NOT REMOVE FROM FILE