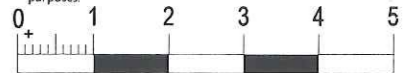


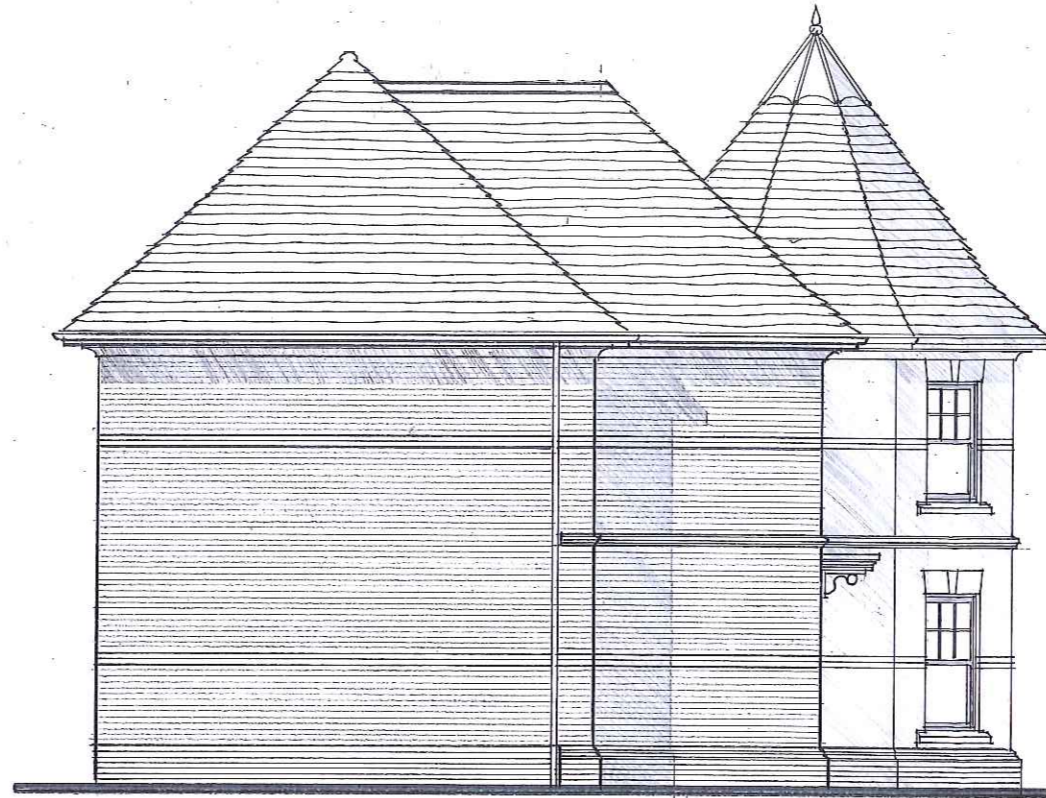
NOTES:

Do not scale from this drawing except for planning application purposes.



METRES

1:100



Rev	Date	Notes	Initials
-----	------	-------	----------

**ADS**

@

Unit 64, Barwell Business Park,  
Leatherhead Road  
Chessington, Surrey  
Tel. 0208 391 6670  
Fax. 0208 391 6688

PROJECT  
77-79 Ormond Avenue  
Hampton

DRAWING TITLE  
Plot 5  
Elevations

SPEC

AREA

SCALE  
1:100@A3

DATE  
Sept 2013

DRAWN  
MS

DWG NO.

57513/PL1/11

REV.

PLANNING