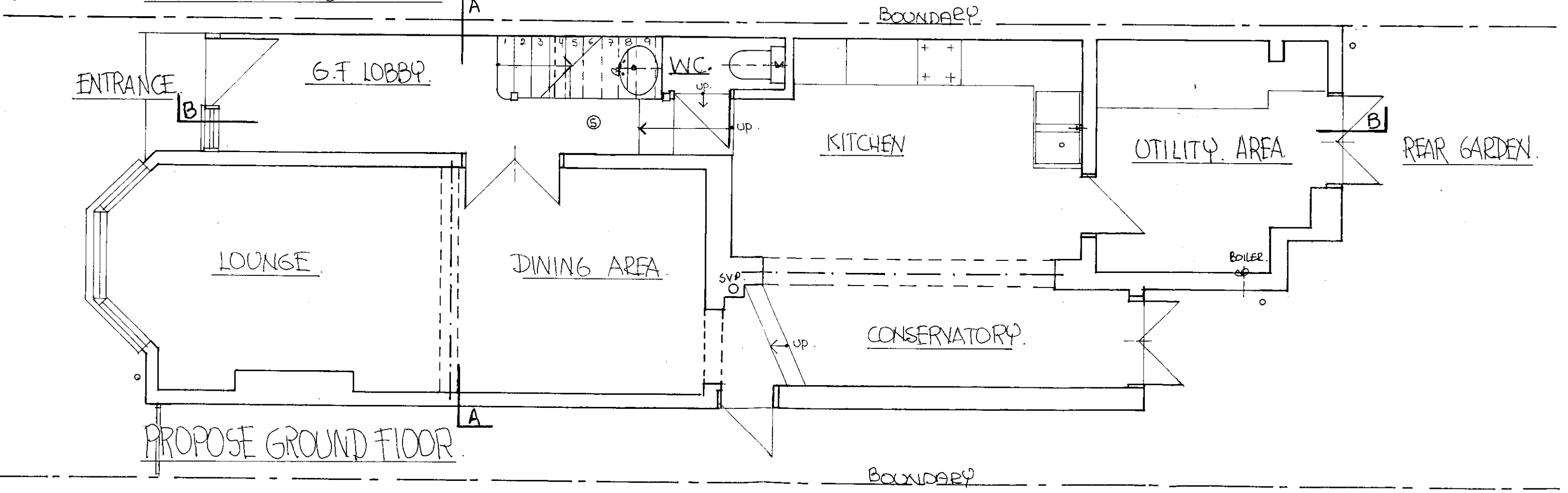


05/2203/HOT
 LONDON BOROUGH OF RICHMOND UPON THAMES
 09 AUG 2005
 PLANNING



DWG No 055342 WAL SCALE 1:50 AT A3 REV: 22th July 2000

PROPOSED FIRST & GROUND FLOOR PLAN
 97 Waldegrave Road, TW11 8LA.

Effectiveness by Design, Beatriz Bianchi, BA, Chartered Designer
 27c, Strathville Road, London SW18 & 4QX
 Tel: 020 8944 7322 Fax: 020 88793067

All dimensions to be checked on site. Drawings not to be scaled. All dimensions in millimetres.