

Context

Local Building Types

Latchmere Close



11 - 12 Latchmere Close



Key

■ One Storey

■ Two Storey with Roof Accomodation

■ Two Storey

■ Three Storey



13 - 14 Latchmere Close



17 - 18 Latchmere Close



27 - 28 Latchmere Close



29 - 30 Latchmere Close

Historical Summary - Latchmere House

Latchmere House was originally built as a large residential property within its own once extensive grounds and estate. A building appears on this site in the early 19th century, although analysis of historical maps, archival information and visual survey indicates that the house was considerably altered and extended in the Edwardian period. However, the more recent history of the house as Camp 020 is perhaps its greatest significance. Latchmere House was used in WWII as a detention centre for German spies.

The existing external appearance of the building illustrates its phased development and sequence of alterations and extensions in the 19th and 20th centuries, of which some later changes have been unsympathetic to the architectural character of the building. It is part three and part two storeys in height and has a complex plan form. It is brick built with stucco render to some discreet elements or details, and also some painted stone dressings. The pitched roof form is clad in slate, with a number of dormer windows to the north west elevation.

The south east elevation has a stuccoed and curved bay to the taller three storey element, which may indicate that this part of the building dates from the earlier 19th century. The two storey north east element presents canted bays to the former garden space, now modern car park. The principal front (north west) elevation has a distinctive shaped gable towards its centre and related segmental dormers, which shows the influence of the revival in the Northern Renaissance style of architecture, and also corresponds to the Edwardian phase in the development of the house. There is a single storey range to the north corner of the building, which incorporates the current main entrance.

Today, the historic setting of the former domestic residence at Latchmere House does not remain intact. Its historic context has been substantially altered over time, as a result of later developments within the former estate and surrounding area. Around the house the domestic gardens, the north gate lodge, former service and farm buildings and associated spaces are indicated on historical maps and archival information from the 19th to early 20th century. As found today, these features have been lost or isolated while reduced fragments of these elements have been unsympathetically altered. The immediate setting of the building is characterised by a largely modern layout of buildings and spaces, which are associated with its most recent use as a remand centre.



Latchmere House



Feature fireplace



Feature panelling



Internal arch

Context

Existing Building - Latchmere House

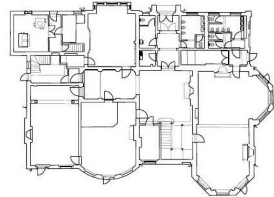
Latchmere House has been designated a building of townscape merit by the London Borough of Richmond upon Thames. The house been altered and amended both internally and externally over the years. There are some internal elements of architectural and historical value, namely the fireplaces and panelling to one of the main reception rooms.



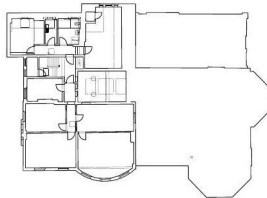
Existing Surface treatment around Latchmere House



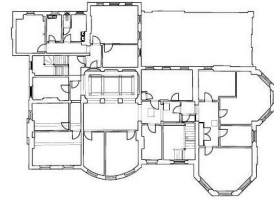
Existing Basement Floor Plan



Existing Ground Floor Plan



Existing Second Floor Plan



Existing First Floor Plan

Context

Local Building Types

Latchmere Close



11 - 12 Latchmere Close



Key

- One Storey
- Two Storey
- Two Storey with Roof Accomodation
- Three Storey



13 - 14 Latchmere Close



17 - 18 Latchmere Close



27 - 28 Latchmere Close



29 - 30 Latchmere Close

Historical Summary - Latchmere House

Latchmere House was originally built as a large residential property within its own once extensive grounds and estate. A building appears on this site in the early 19th century, although analysis of historical maps, archival information and visual survey indicates that the house was considerably altered and extended in the Edwardian period. However, the more recent history of the house as Camp 020 is perhaps its greatest significance. Latchmere House was used in WWII as a detention centre for German spies.

The existing external appearance of the building illustrates its phased development and sequence of alterations and extensions in the 19th and 20th centuries, of which some later changes have been unsympathetic to the architectural character of the building. It is part three and part two storeys in height and has a complex plan form. It is brick built with stucco render to some discreet elements or details, and also some painted stone dressings. The pitched roof form is clad in slate, with a number of dormer windows to the north west elevation.

The south east elevation has a stuccoed and curved bay to the taller three storey element, which may indicate that this part of the building dates from the earlier 19th century. The two storey north east element presents canted bays to the former garden space, now modern car park. The principal front (north west) elevation has a distinctive shaped gable towards its centre and related segmental dormers, which shows the influence of the revival in the Northern Renaissance style of architecture, and also corresponds to the Edwardian phase in the development of the house. There is a single storey range to the north corner of the building, which incorporates the current main entrance.

Today, the historic setting of the former domestic residence at Latchmere House does not remain intact. Its historic context has been substantially altered over time, as a result of later developments within the former estate and surrounding area. Around the house the domestic gardens, the north gate lodge, former service and farm buildings and associated spaces are indicated on historical maps and archival information from the 19th to early 20th century. As found today, these features have been lost or isolated while reduced fragments of these elements have been unsympathetically altered. The immediate setting of the building is characterised by a largely modern layout of buildings and spaces, which are associated with its most recent use as a remand centre.



Latchmere House



Feature fireplace



Feature panelling



Internal arch

Context

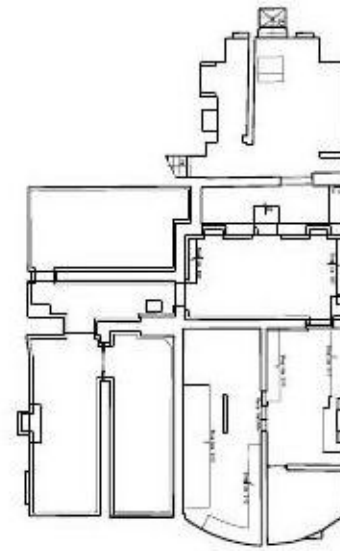
Existing Building - Latchmere House

Latchmere House has been designated a building of townscape merit by the London Borough of Richmond upon Thames. The house has been altered and amended both internally and externally over the years. There are some internal elements of architectural and historical value, namely the fireplaces and panelling to one of the main reception rooms.

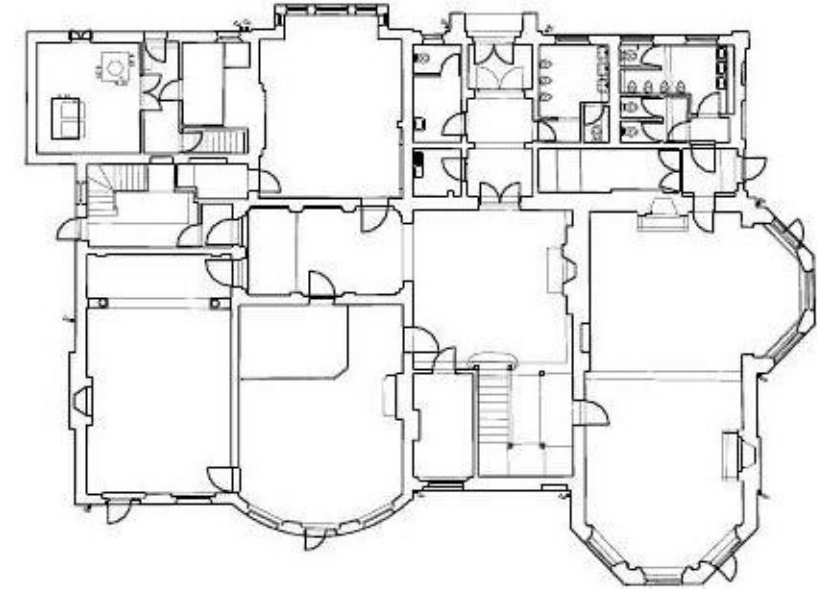


Existing Surface treatment around Latchmere House

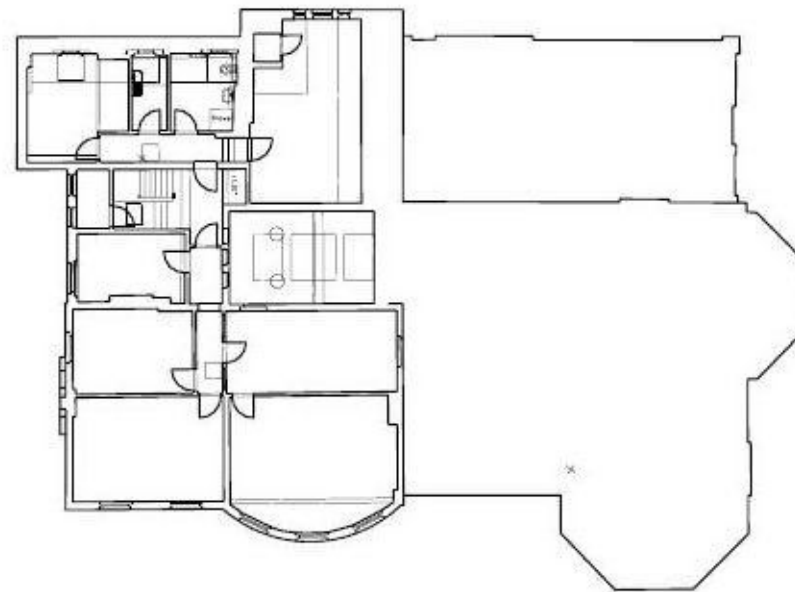
-  Existing hardstanding
-  Existing soft landscaping



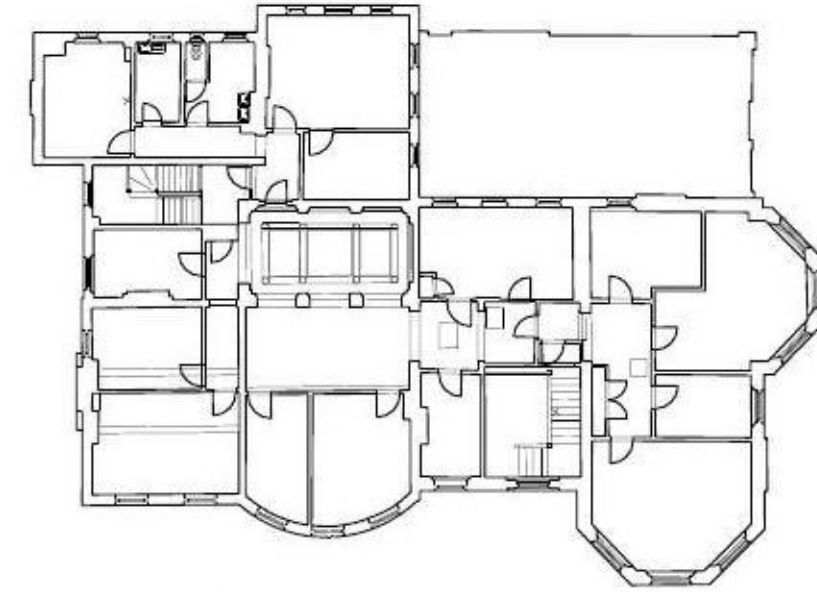
Existing Basement Floor Plan



Existing Ground Floor Plan



Existing Second Floor Plan



Existing First Floor Plan