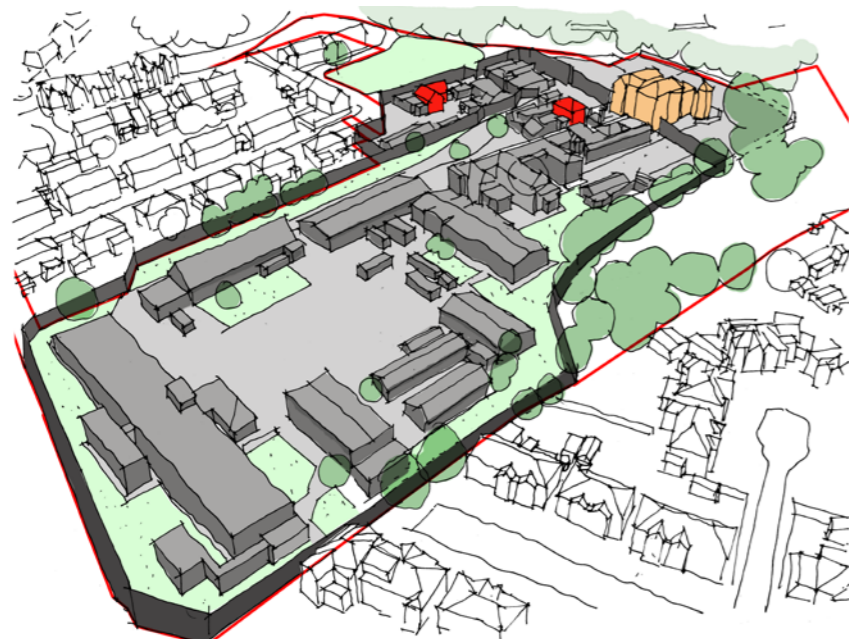


This perspective envisages street layout a that stitches into the existing street pattern and complements the existing character. The new houses are two storey with pitched roofs containing further accommodation. We have proposed a mix of detached, semi detached and terraced houses which is very much in character with the local area. The scheme envisages significant increases in soft landscape including publicly accessible space and private front and rear gardens. This compares to the existing situation which has large areas of hardstanding.



Existing aerial perspective



Proposed aerial perspective

Amount

Proposed Masterplan

The proposed masterplan provides a range of 3, 4 and 5 bed family homes, in addition to seven apartments in the refurbished Latchmere House.

The masterplan incorporates the main features established in the design development section, principally -

- Two storey accommodation framing the village green to the north of the site.
- A pair of 'gatehouses' framing the approach towards Latchmere House.
- The preservation of green space and new pedestrian connections to the south east of Latchmere House.
- A north-east to south-west axis terminating at Latchmere House itself
- Pedestrian connections stitching the proposal into the existing street layout at Garth Road.
- A broad mix of affordable housing sizes
- Crescents responding to Latchmere House.
- Additional access from Latchmere Lane designed so as to reflect an Estate road aesthetic

The breakdown of unit types and sizes is outlined below.

House Type	No. of Bedrooms	Number of Units
House Type A1	3	4
House Type A2	4	3
House Type B1	4	3
House Type B3	4	2
House Type B4	4	3
House Type C1	5	2
House Type D1	3	10
House Type E1	4	5
House Type E2	5	16
House Type F1	5	5
House Type F2	5	1
House Type F3	5	1
Total (Houses)		55
Private Apartments (Latchmere House)		7
Affordable & Shared Ownership Apartments		
One Bedroom Flats	1	14
Two Bedroom Flats	2	7
Three Bedroom Flats	3	6
Total (Overall Development incl Affordable)		89

Schedule of Accommodation



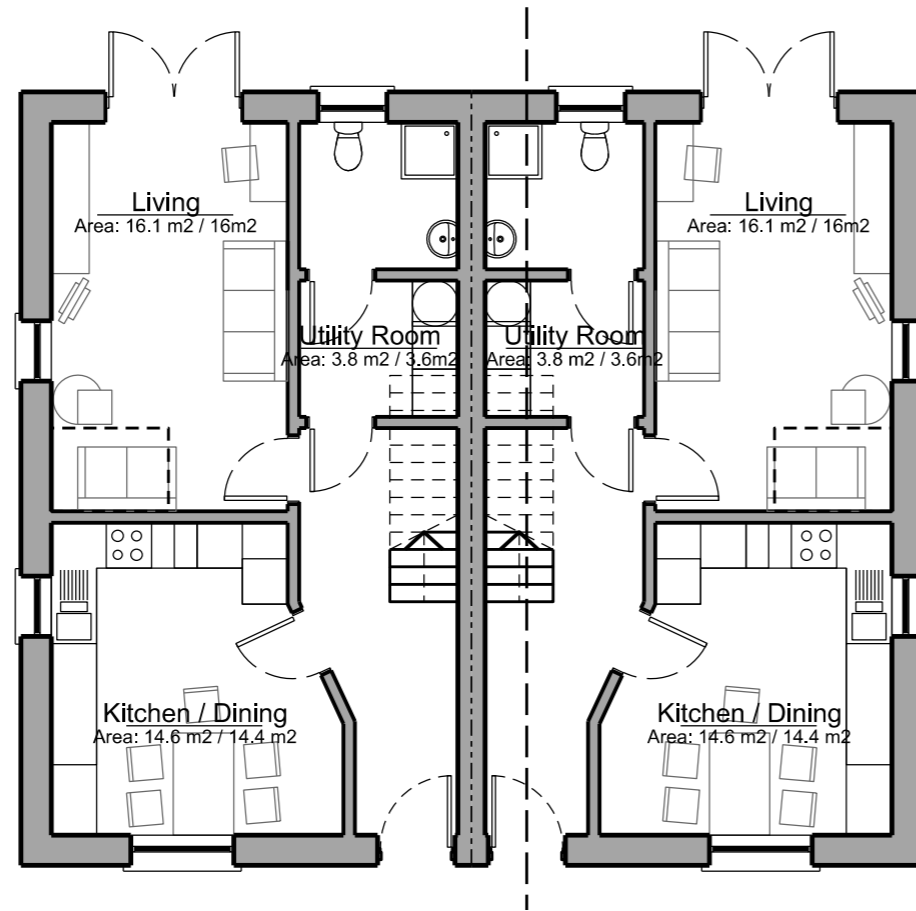
Key

- | | | |
|--|--|--|
| A. 3 Bed House | D. 3 Bed House | Affordable Flats 1-3 Beds |
| B. 4 Bed House | E. 4 / 5 Bed House | Latchmere House, refurbished as apartments |
| C. 5 Bed House | F. 4 / 5 Bed House | |

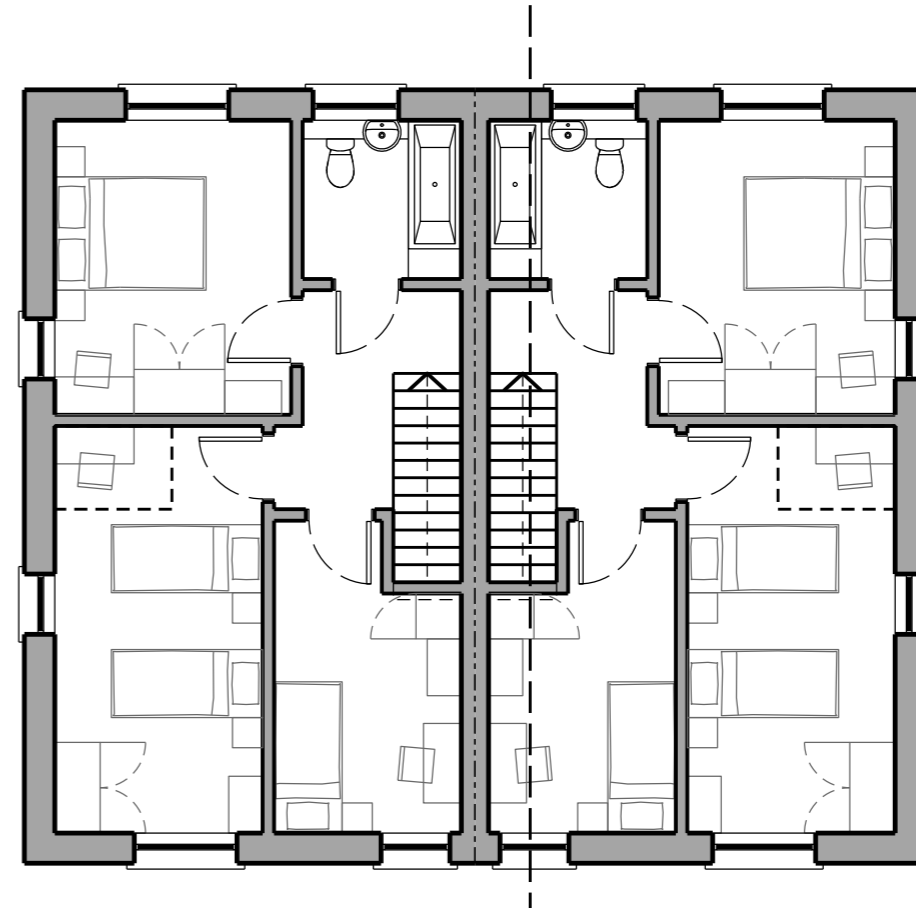
Proposed Floor Plans - House Type A1

House Type A1 is a family home incorporating a kitchen-diner, living room and three bedrooms arranged over two storeys. This semi-detached house with on-plot parking. The four proposed units all look out over the proposed green on Latchmere Close.

As with all the homes on the Latchmere House site it is designed to Lifetime Homes standards.



Ground Floor Plan



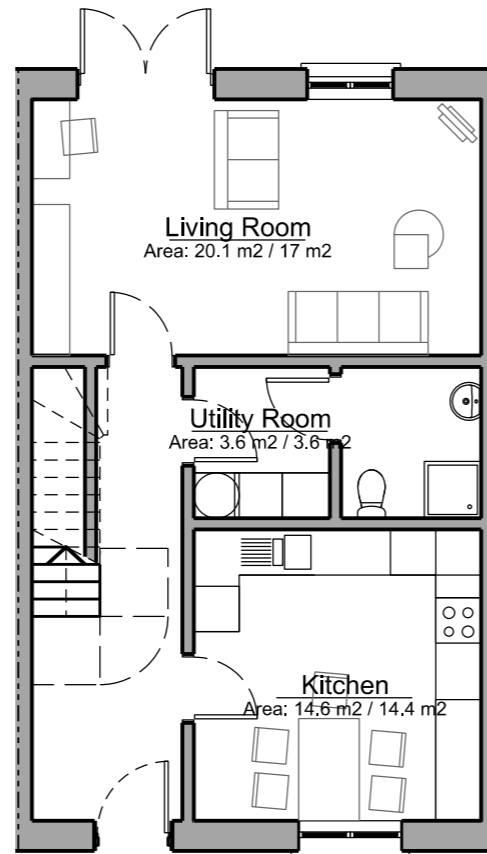
First Floor Plan

House Types

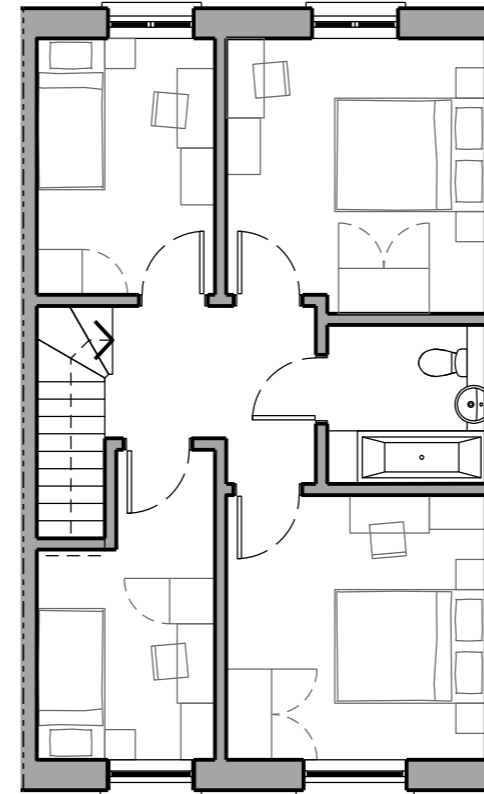
Proposed Floor Plans - House Type A2

House Type A2 is a family home incorporating a kitchen, living-dining room and four bedrooms arranged over two storeys. This is a mid-terrace house with on-plot parking. All of this particular unit type face onto the proposed green on Latchmere Close.

As with all the homes on the Latchmere House site it is designed to Lifetime Homes standards.



Ground Floor Plan

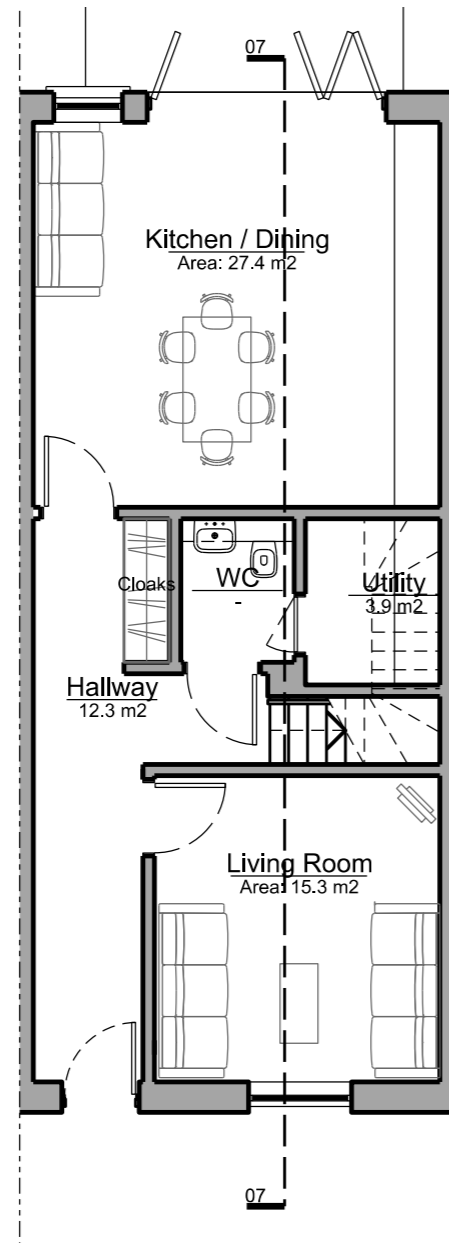


First Floor Plan

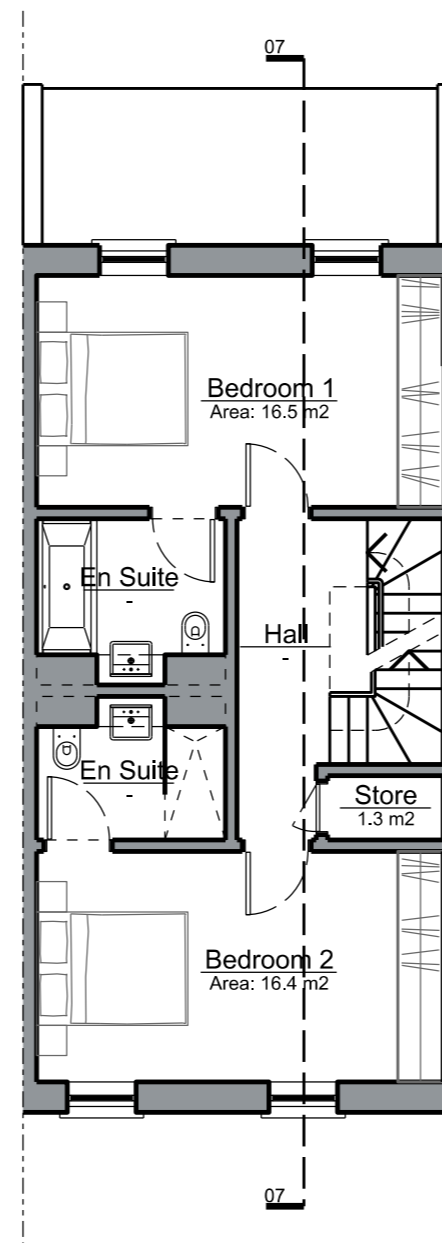
Proposed Floor Plans - House Type B1

House Type B1 is a family home incorporating a kitchen-diner, living room and four bedrooms arranged over three and half storeys. This house makes up one of the terraces on the main avenue.

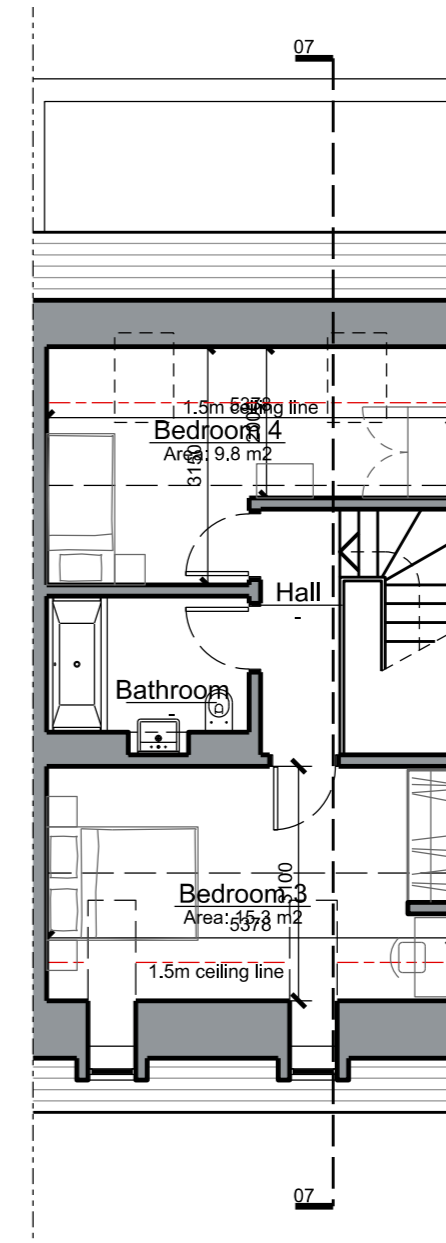
As with all the homes on the Latchmere House site it is designed to Lifetime Homes standards.



Ground Floor Plan



First Floor Plan



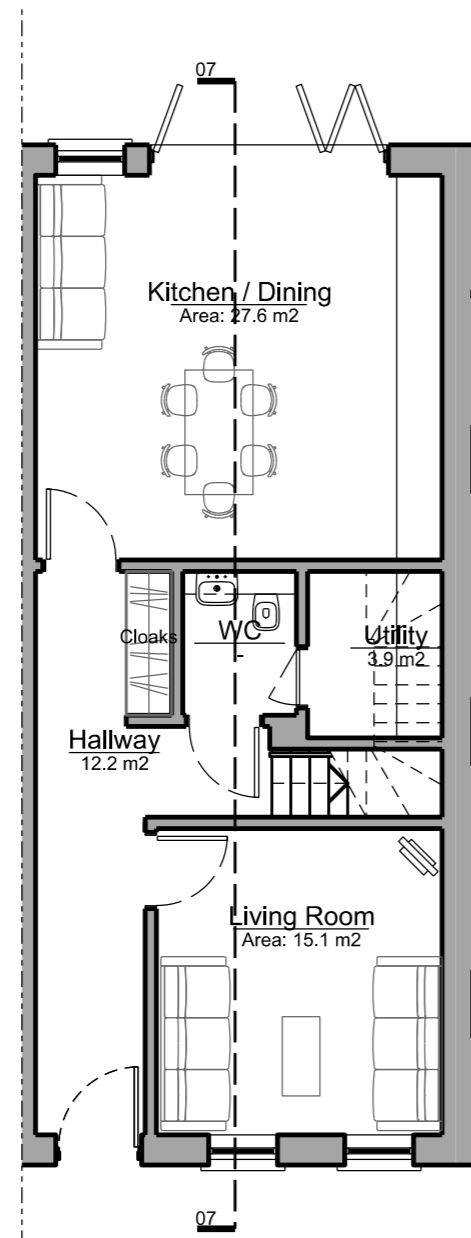
Second Floor Plan

House Types

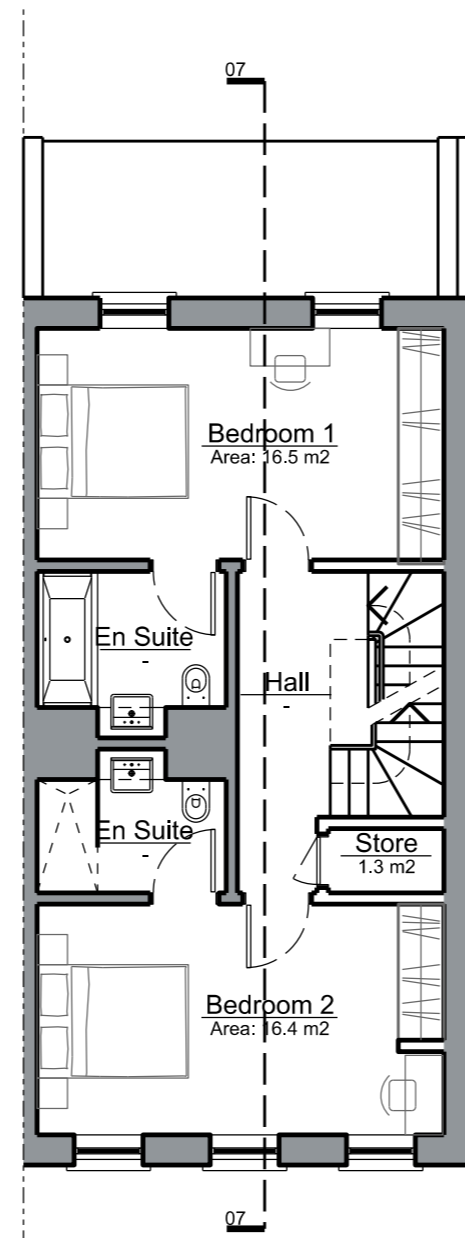
Proposed Floor Plans - House Type B3

House Type B3 is a family home incorporating a kitchen-diner, living room, four bedrooms and a study arranged over three storeys. This is an end of terrace house that ends the crescent terrace opposite Latchmere House.

As all the homes on the Latchmere House site it is designed to Lifetime Homes standards.



Ground Floor Plan



First Floor Plan

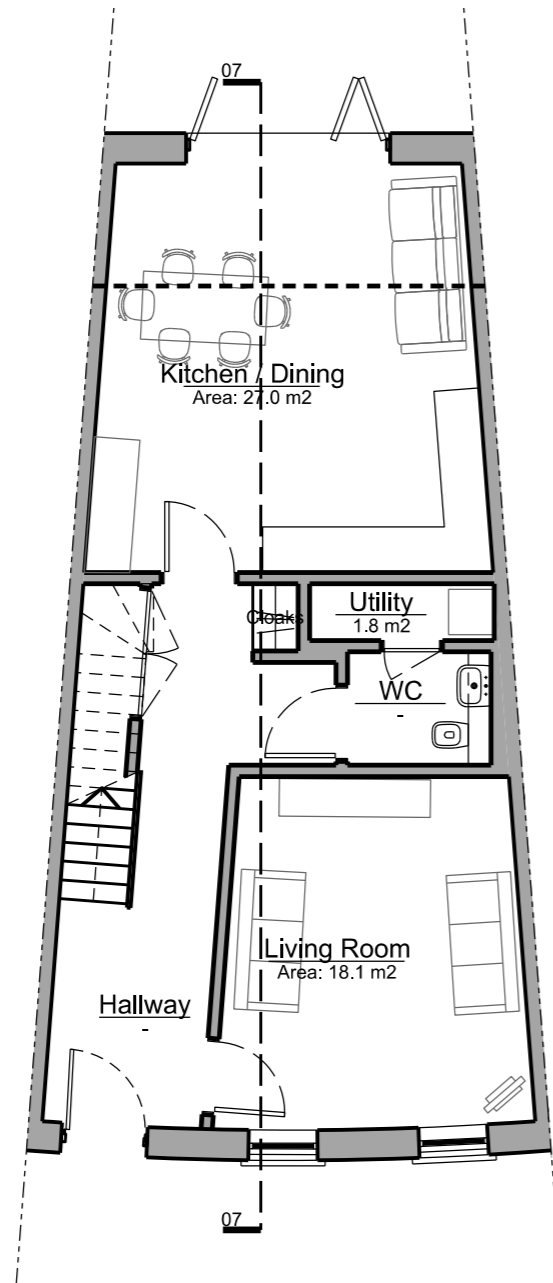


Second Floor Plan

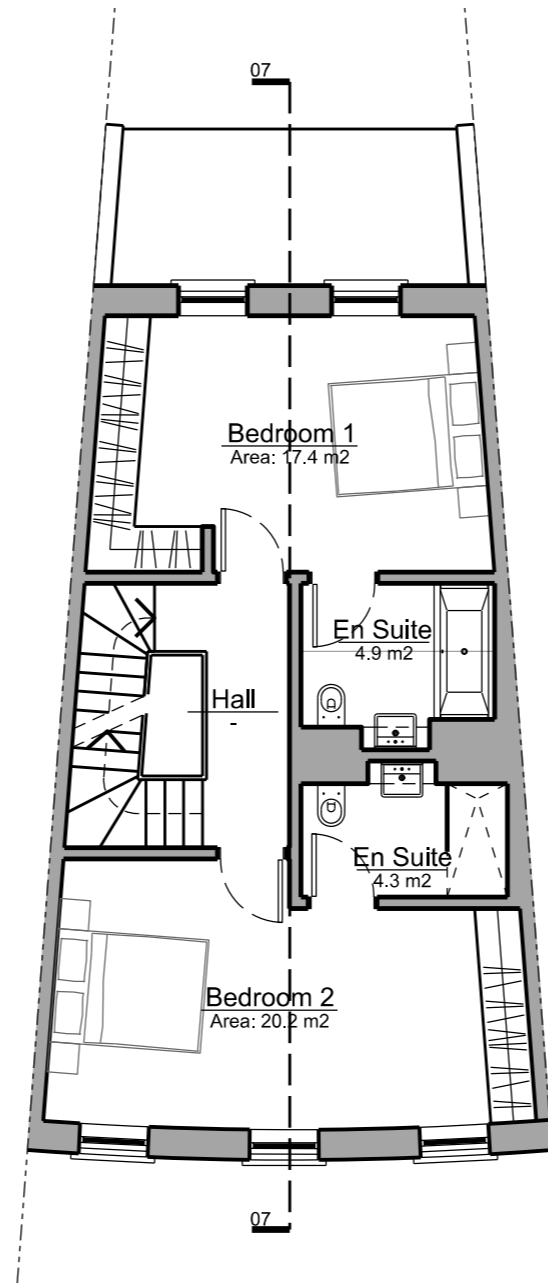
Proposed Floor Plans - House Type B4

House Type B4 is a family home incorporating a kitchen-diner, living room and four bedrooms arranged over three storeys. This house makes up the mid-terrace units on the crescents that front Latchmere House.

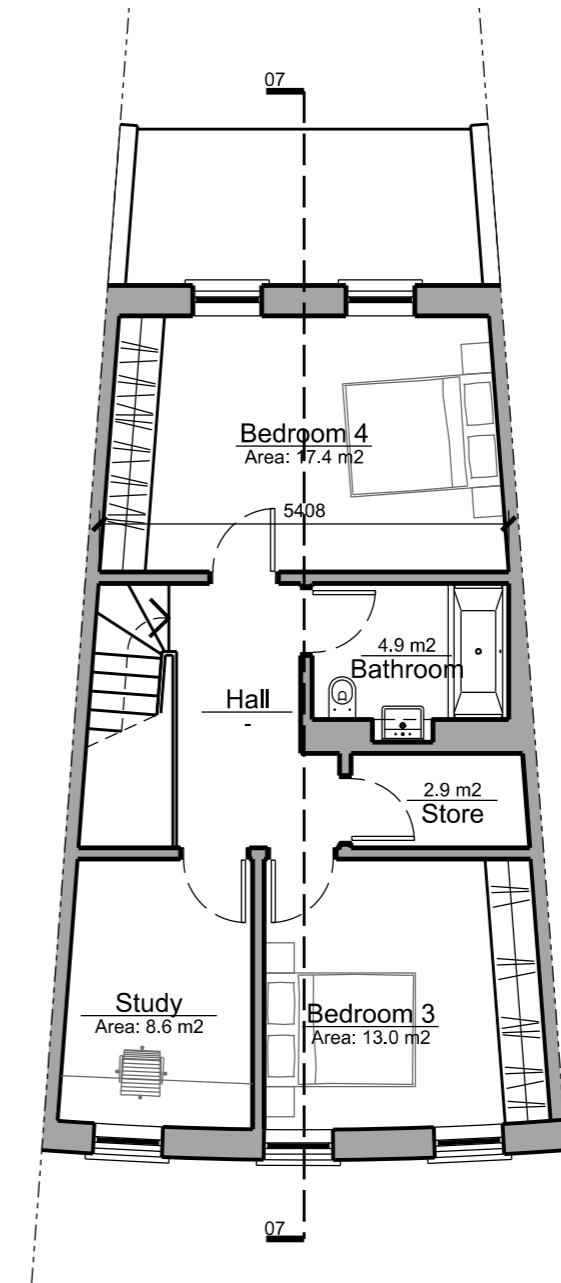
As with all the homes on the Latchmere House site it is designed to Lifetime Homes standards.



Ground Floor Plan



First Floor Plan



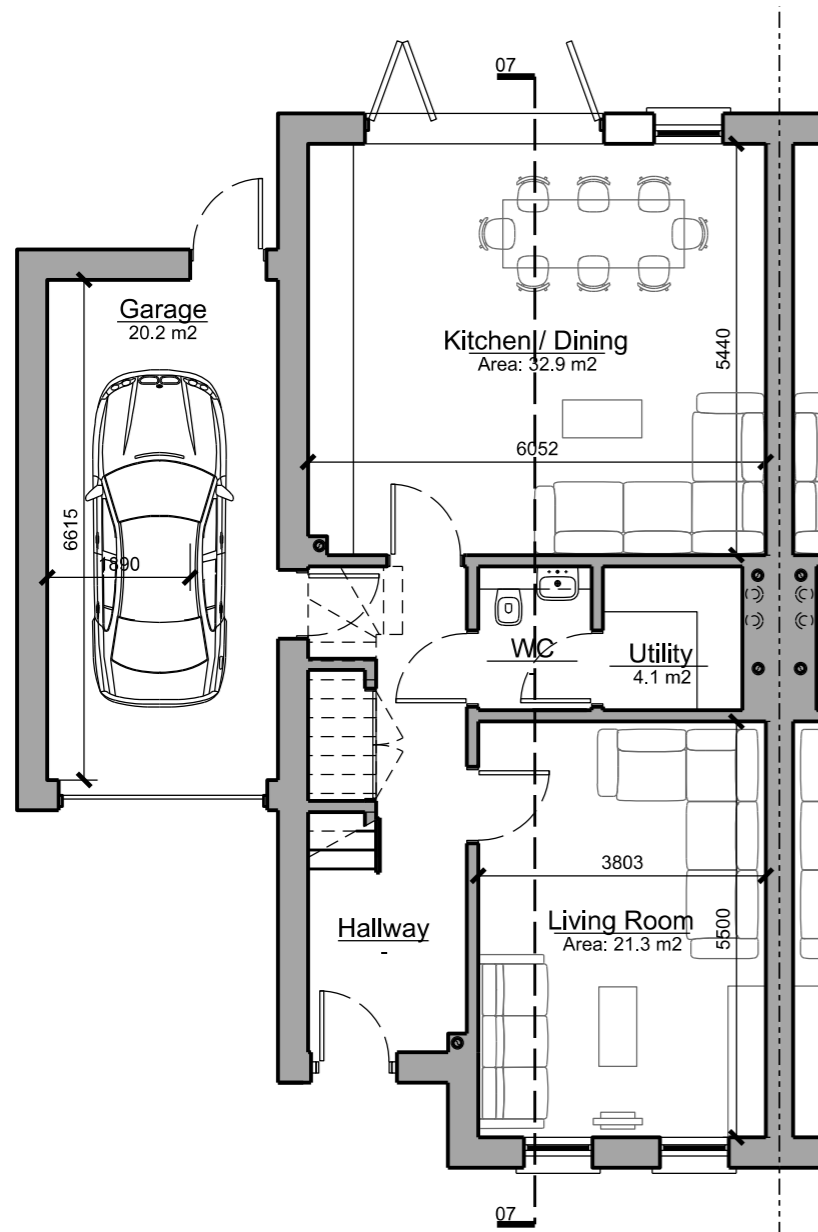
Second Floor Plan

House Types

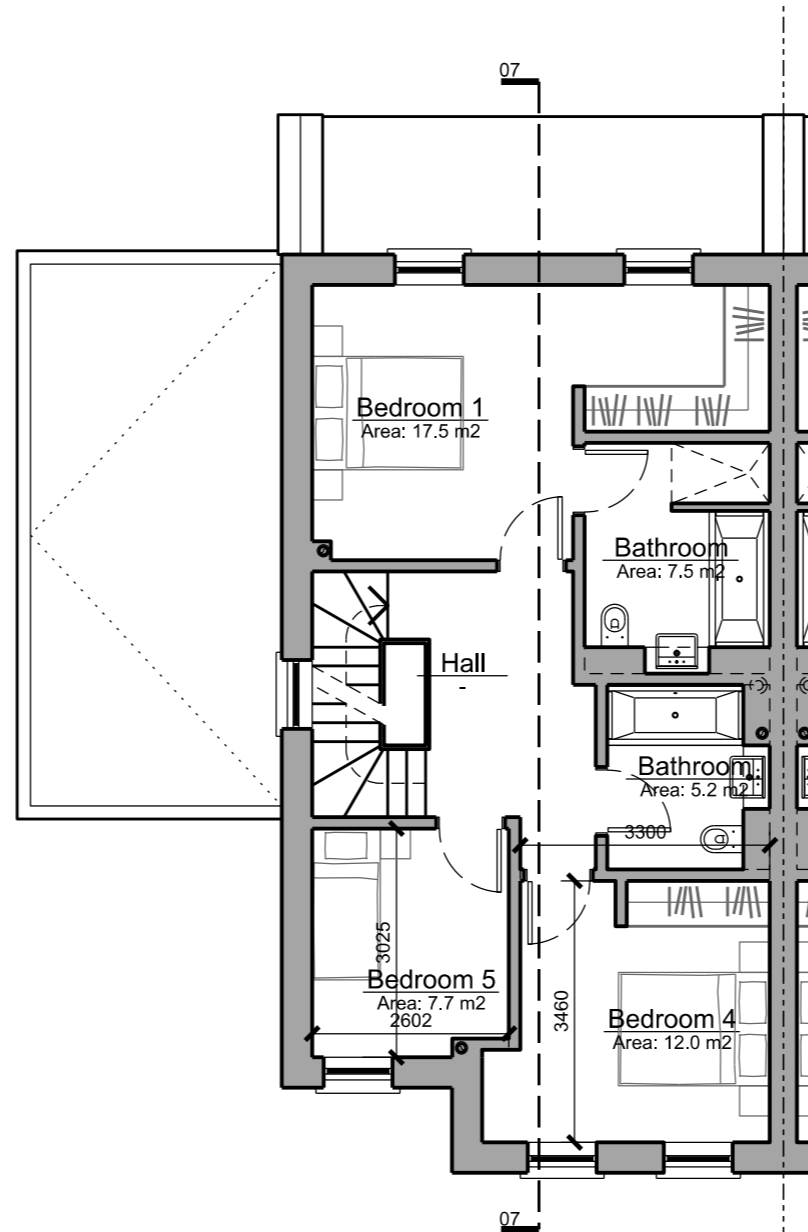
Proposed Floor Plans - House Type C1

House Type C1 is a family home incorporating a kitchen-diner, living room and five bedrooms arranged over two and half storeys. This is a semi-detached house with an attached garage and on-plot parking.

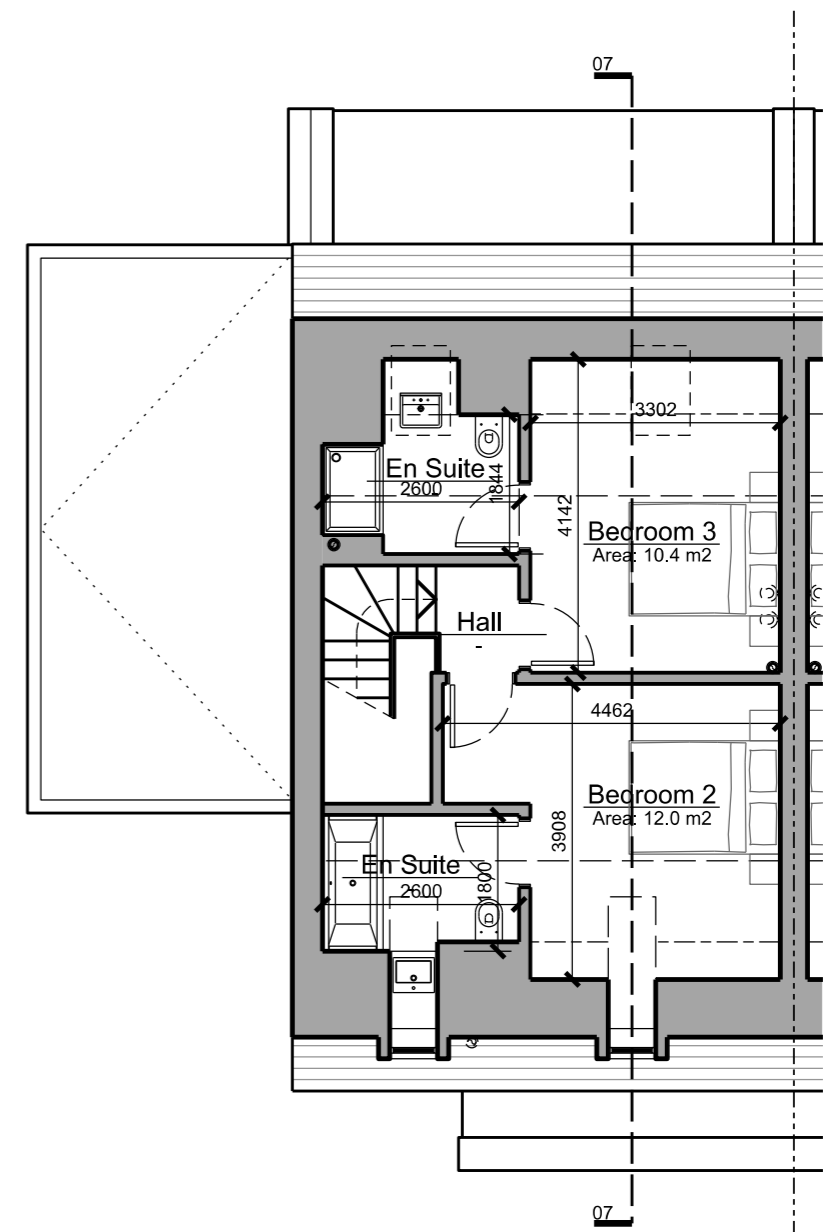
As with all the homes on the Latchmere House site it is designed to Lifetime Homes standard.



Ground Floor Plan



First Floor Plan



Second Floor Plan