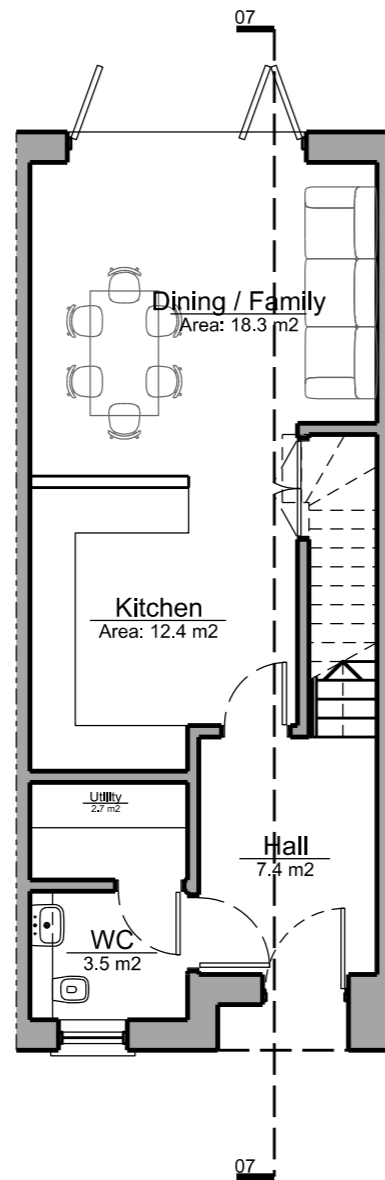


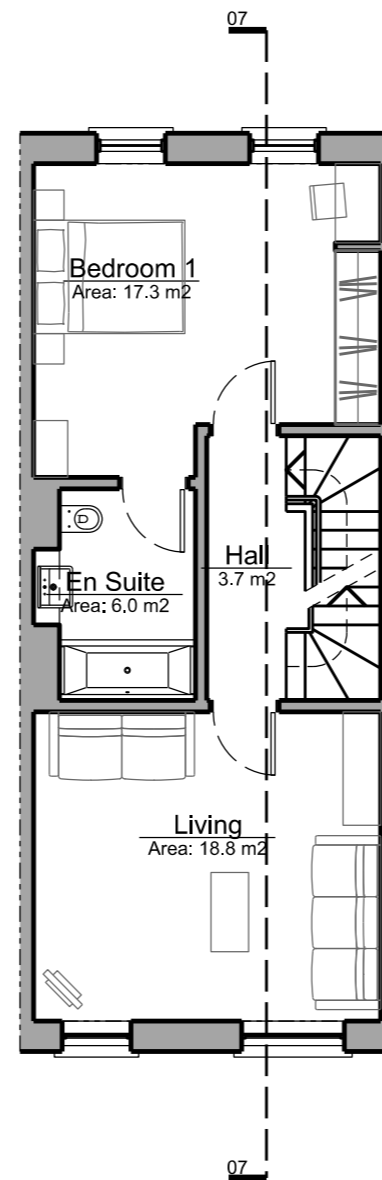
Proposed Floor Plans - House Type D1

House Type D1 is a family home incorporating a kitchen-diner, living room and three bedrooms arranged over three storeys. This is a detached house with a separate garage and on-plot parking.

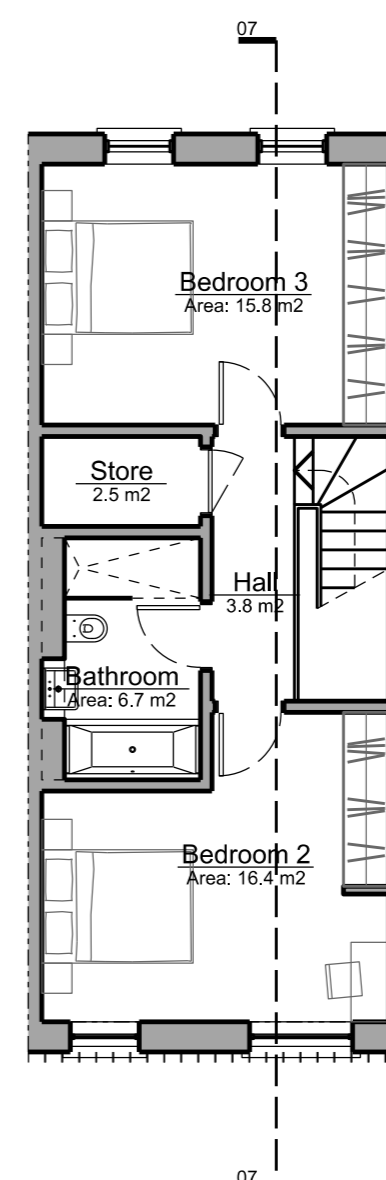
As with all the homes on the Latchmere House site it is designed to Lifetime Homes standard.



Ground Floor Plan



First Floor Plan



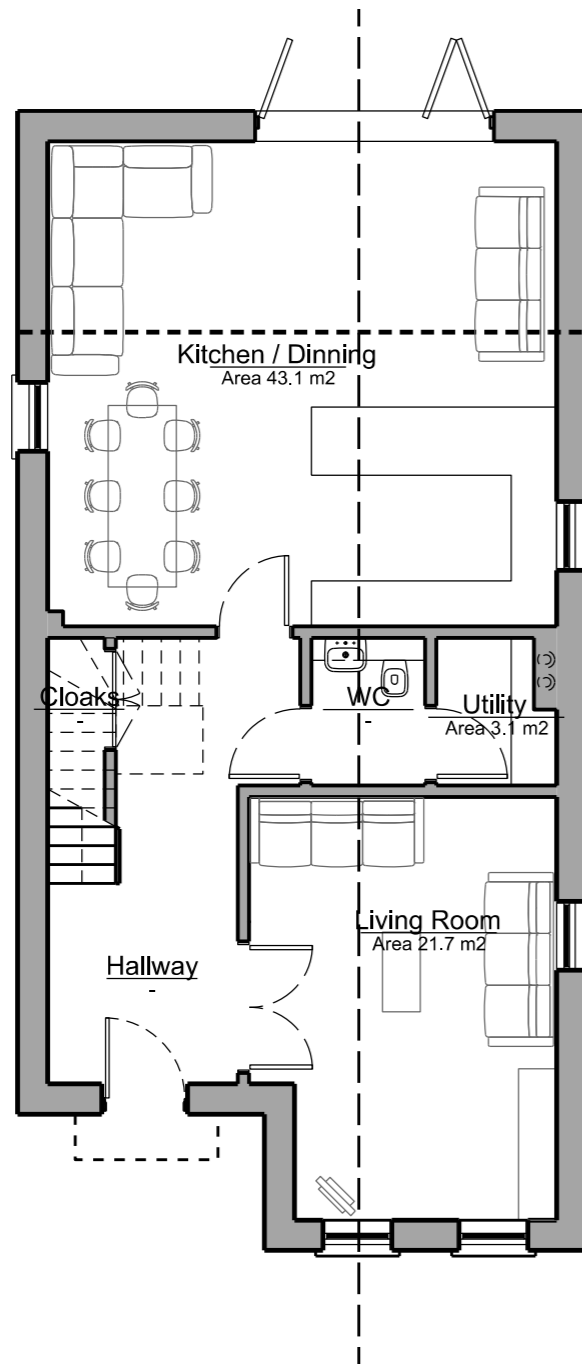
Second Floor Plan

House Types

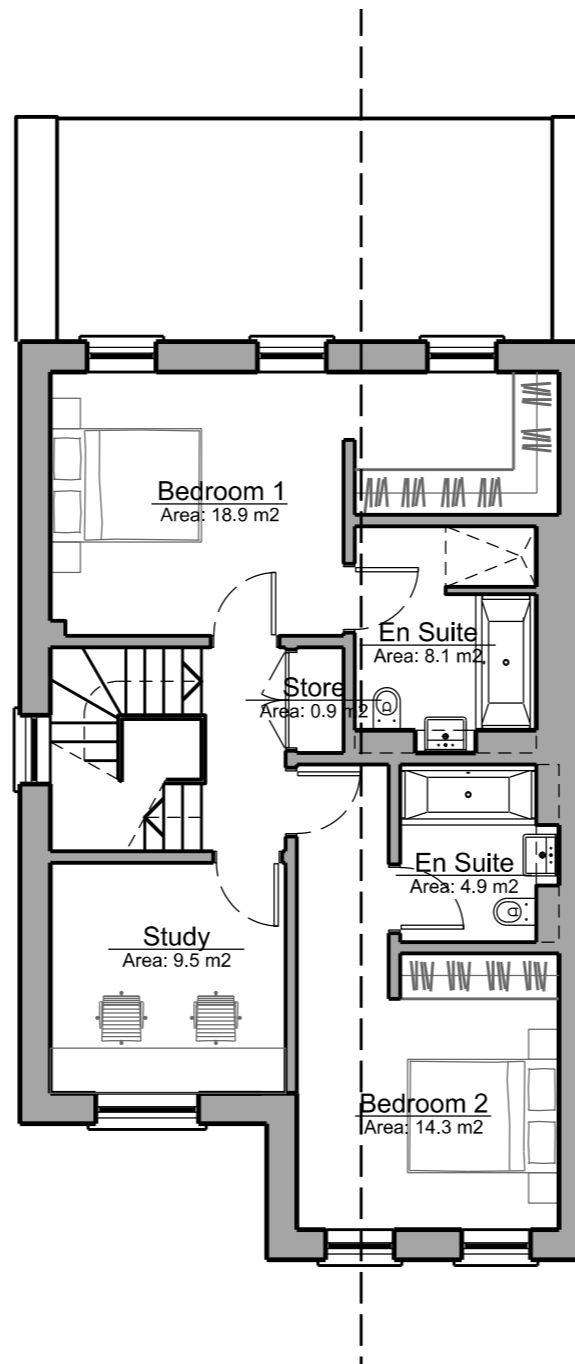
Proposed Floor Plans - House Type E1

House Type E1 is a family home incorporating a kitchen-diner, living room, four bedrooms and a study arranged over two and a half storeys. This is a detached house with on plot parking.

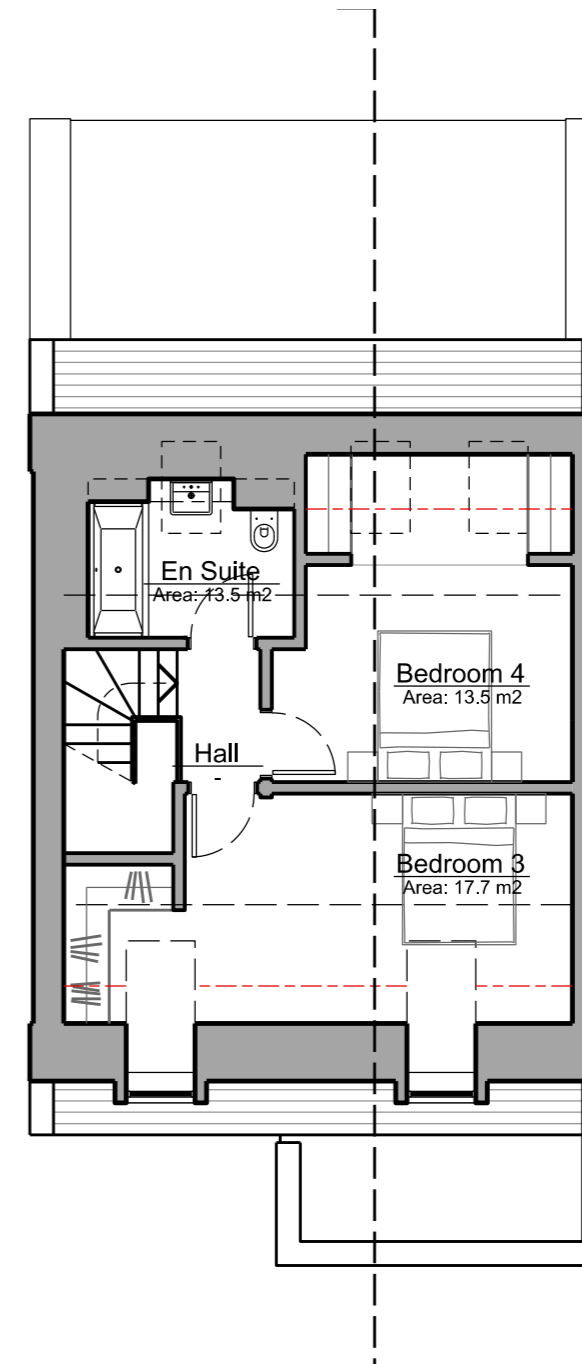
As with all the homes on the Latchmere House site it is designed to Lifetime Homes standard.



Ground Floor Plan



First Floor Plan



Second Floor Plan