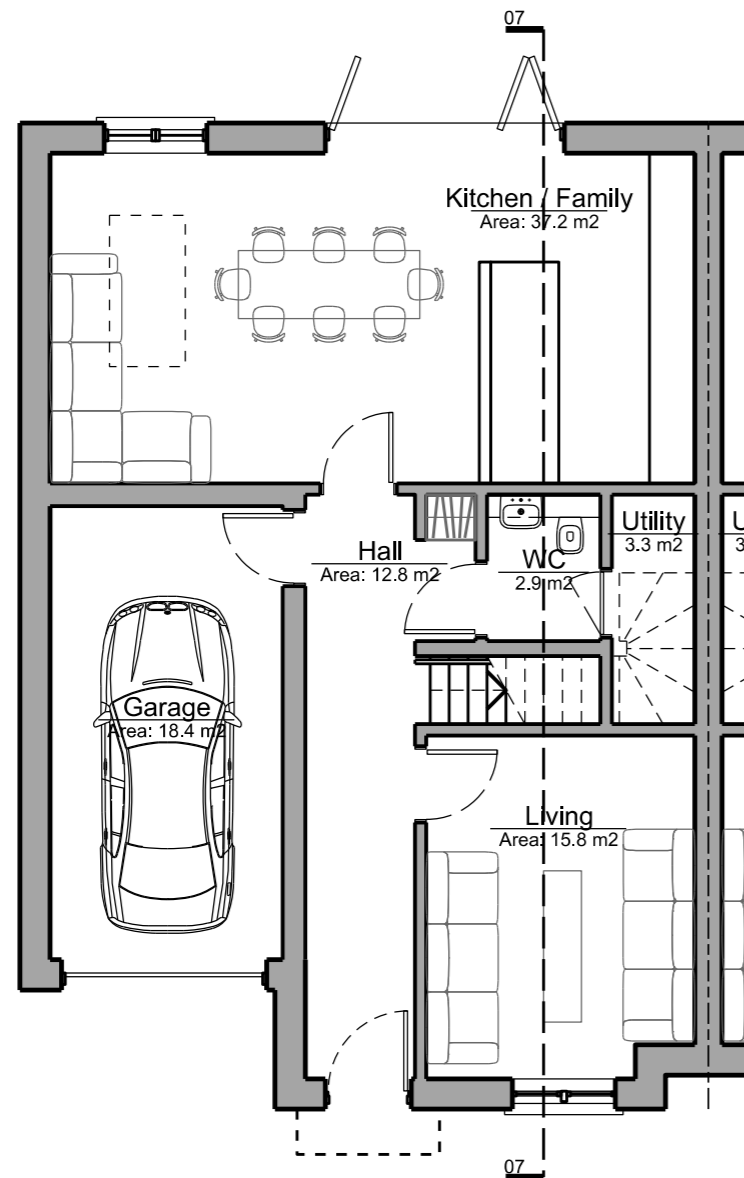


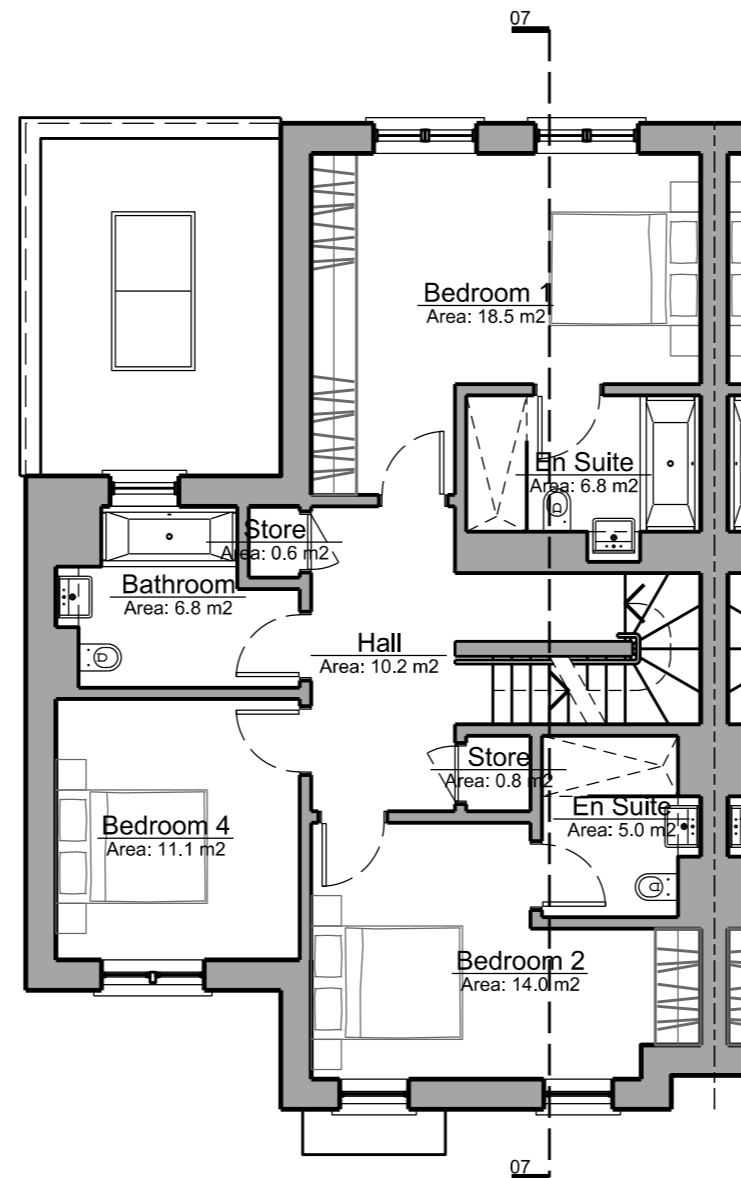
Proposed Floor Plans - House Type E2

House Type E2 is a family home incorporating a kitchen-diner, living room, study and five bedrooms arranged over two and a half storeys. This is a semi-detached unit with an integral garage and on plot parking

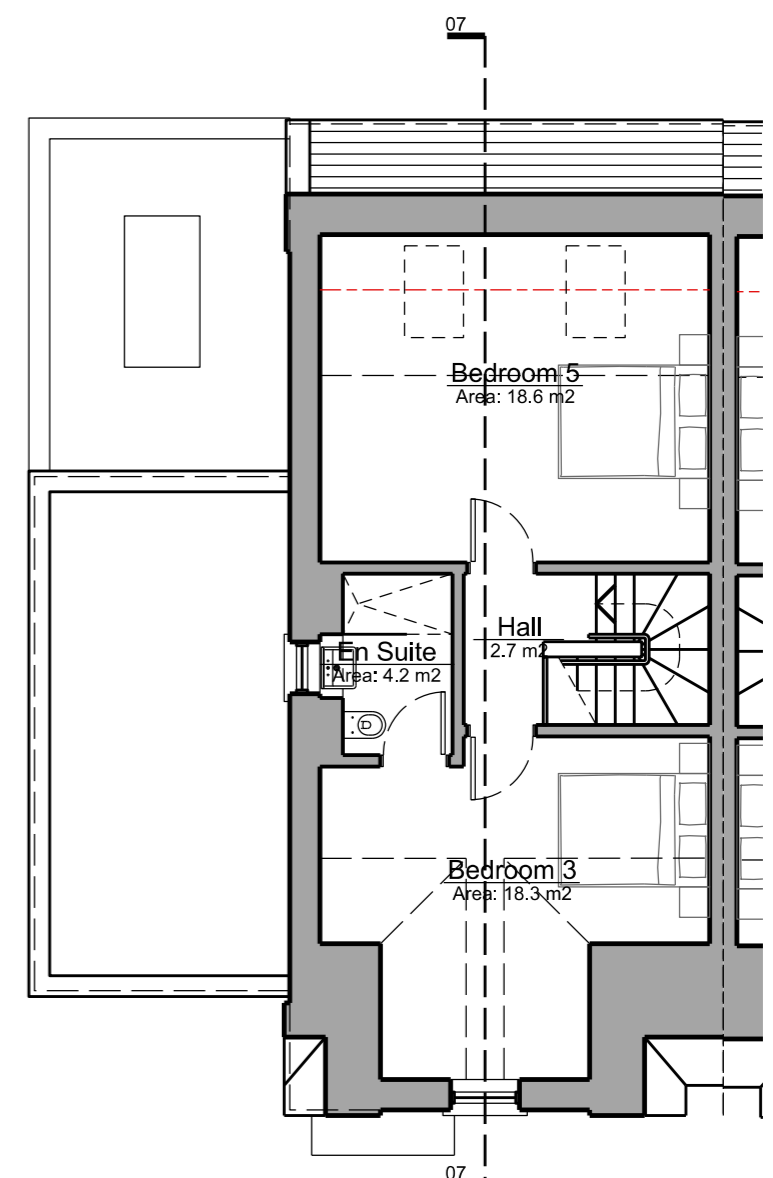
As with all the homes on the Latchmere House site it is designed to Lifetime Homes standard.



Ground Floor Plan



First Floor Plan



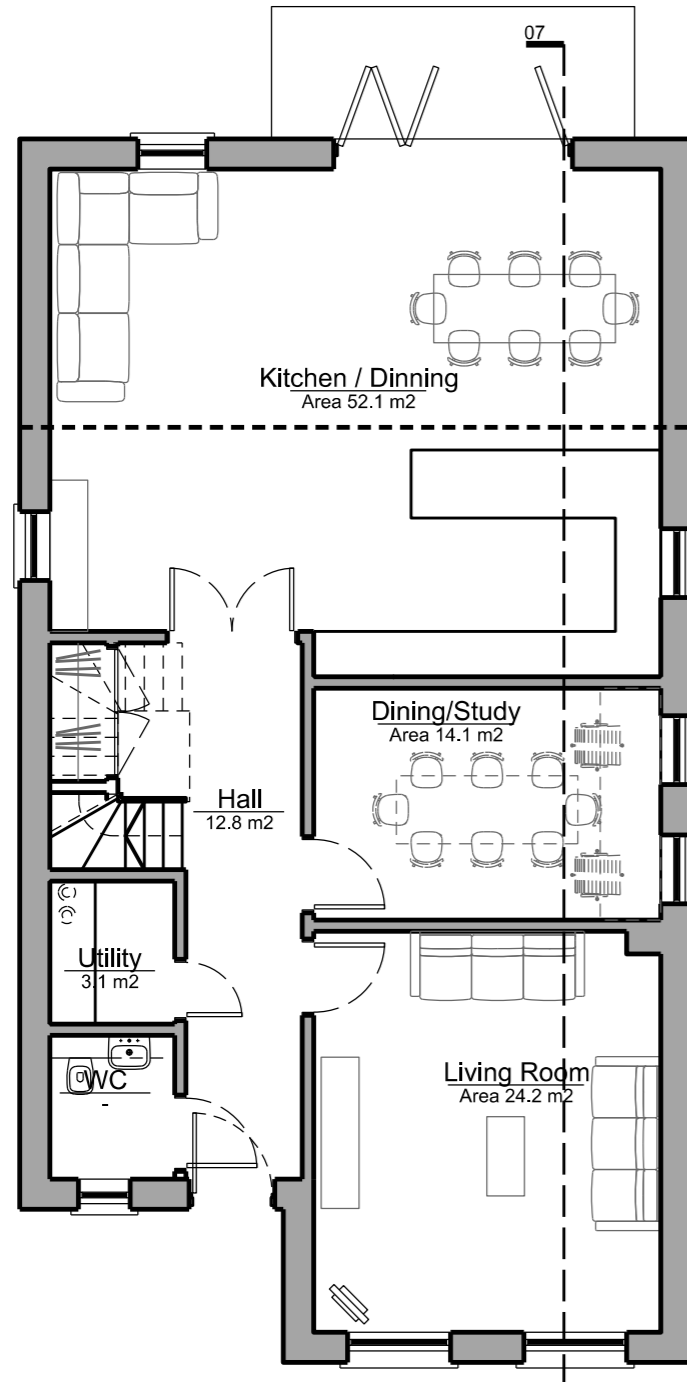
Second Floor Plan

House Types

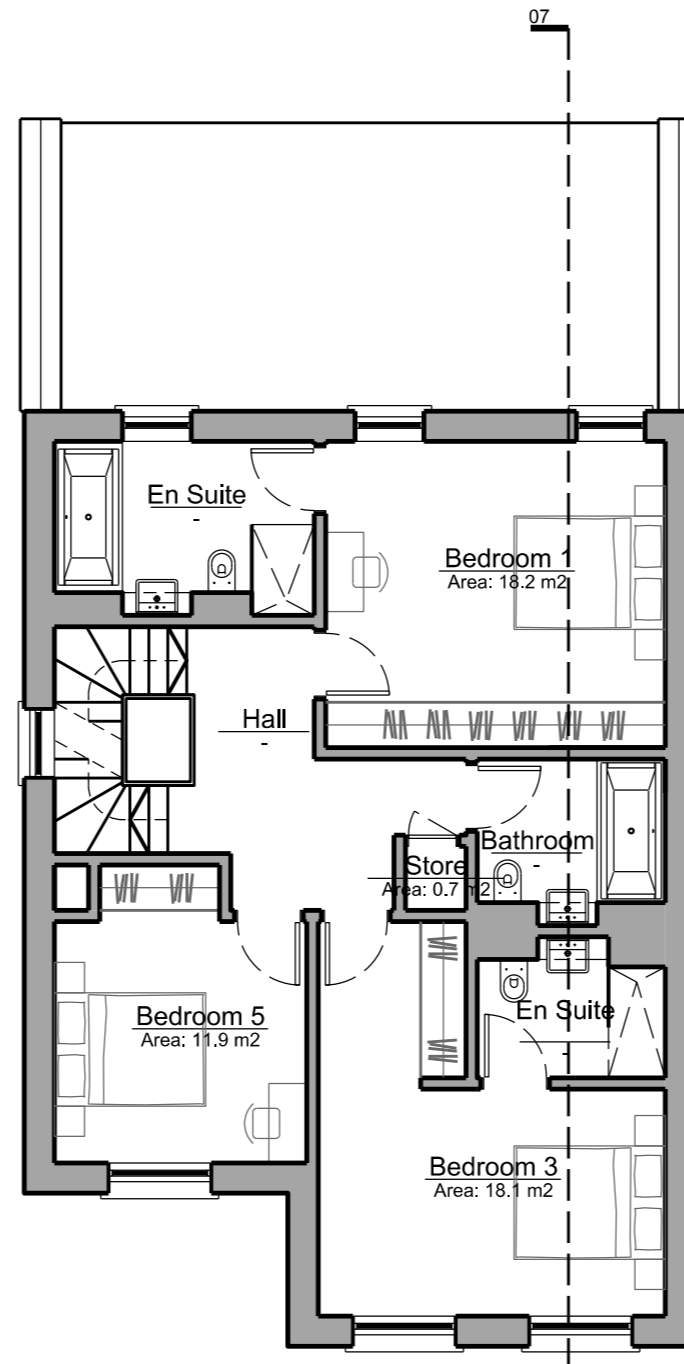
Proposed Floor Plans - House Type F1

House Type F1 is a family home incorporating a kitchen-diner, living room and five bedrooms arranged over two and a half storeys. This is a large 5 bed house with on-plot parking.

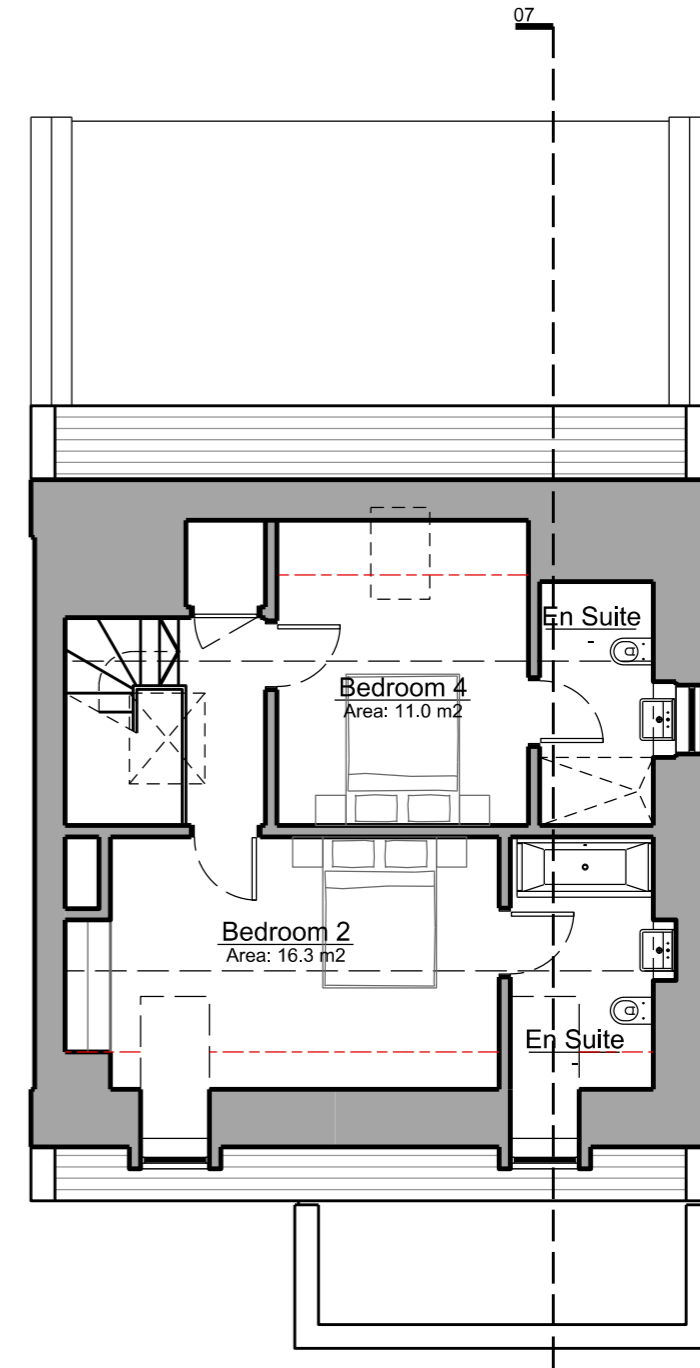
As with all the homes on the Latchmere House site it is designed to Lifetime Homes standard.



Ground Floor Plan



First Floor Plan

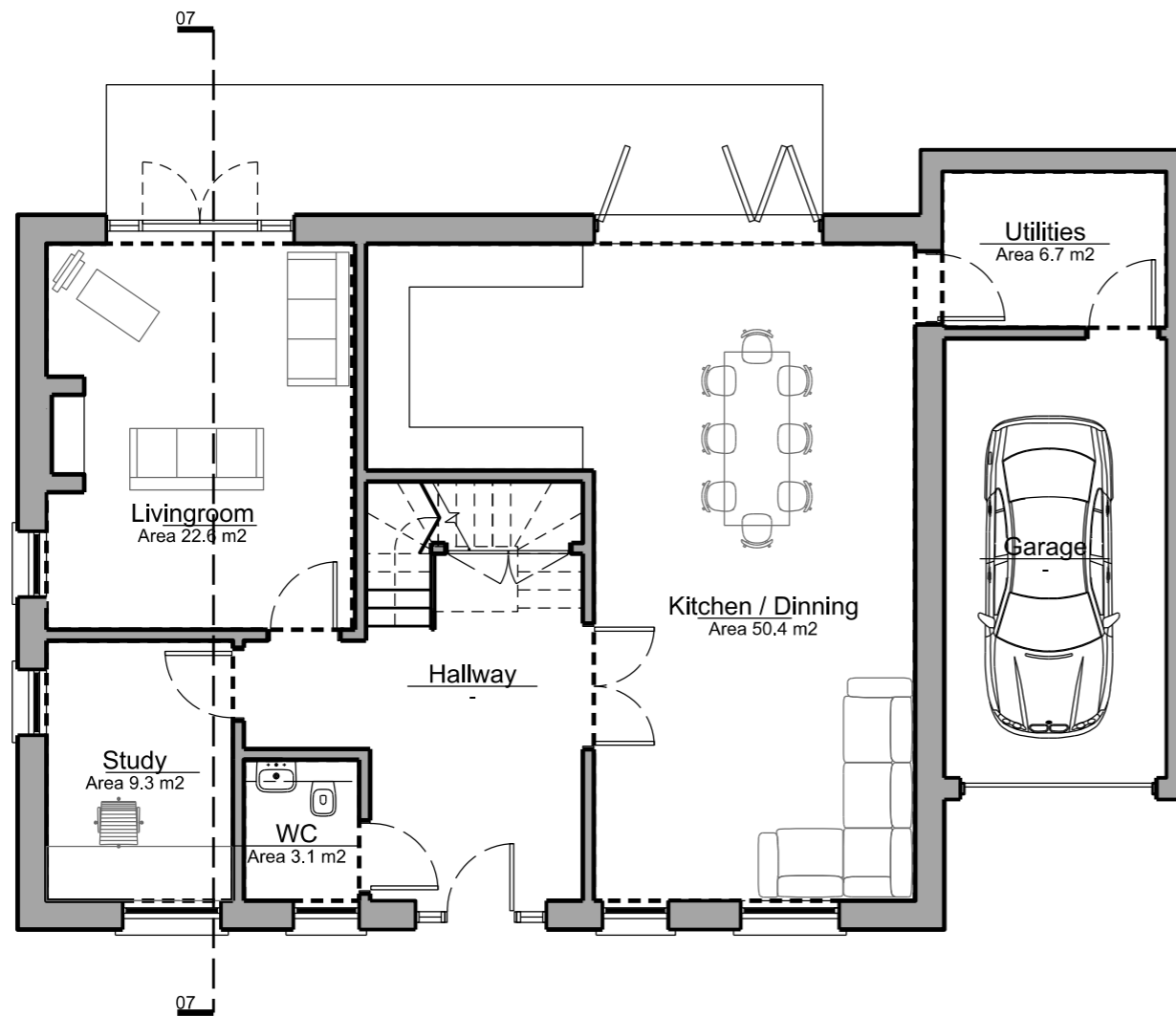


Second Floor Plan

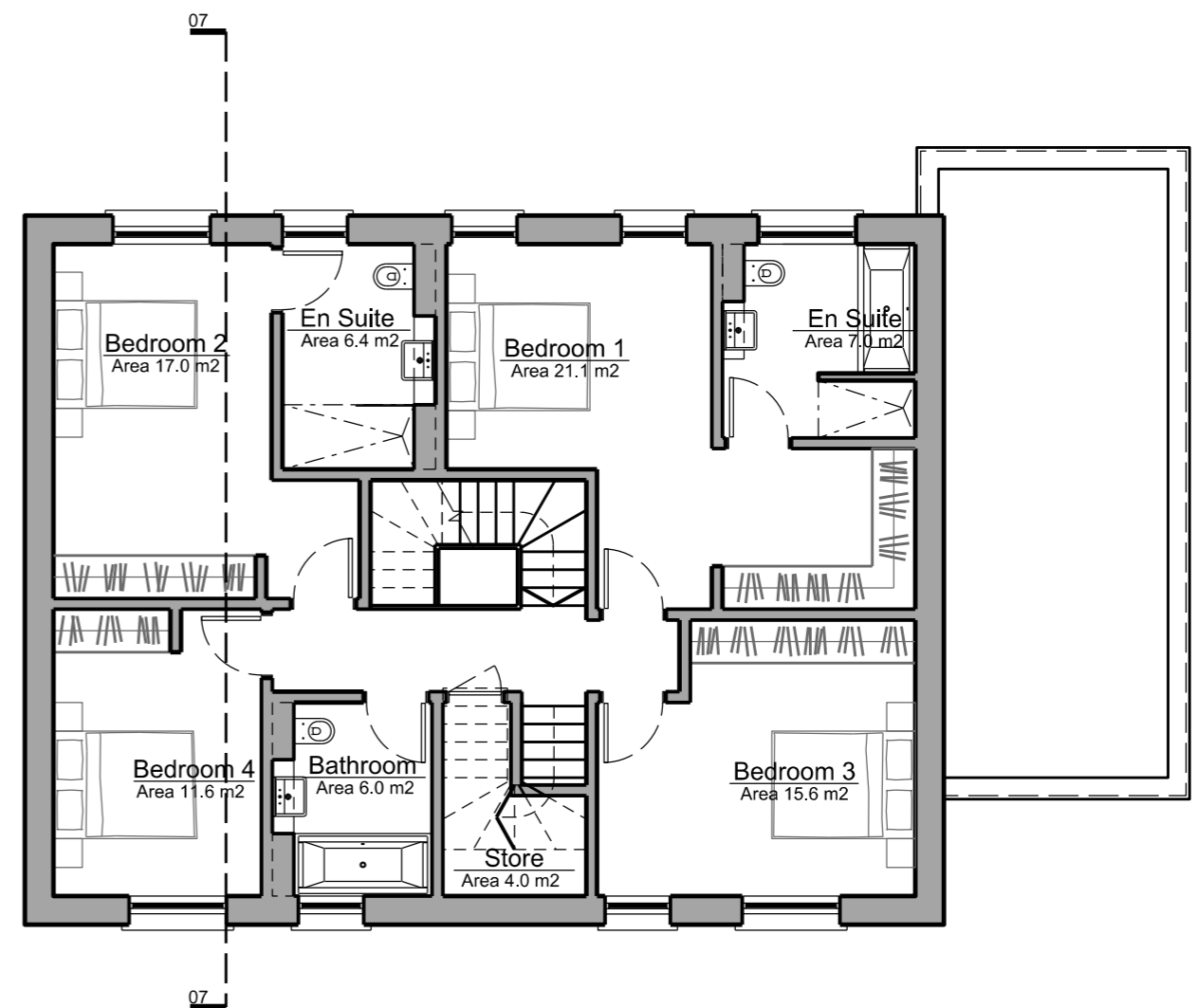
Proposed Floor Plans - House Type F2

House Type F2 is a family home incorporating a kitchen-diner, living room study and five bedrooms arranged over two and a half storeys. This is a large 5 bed detached house with an attached garage and on plot parking.

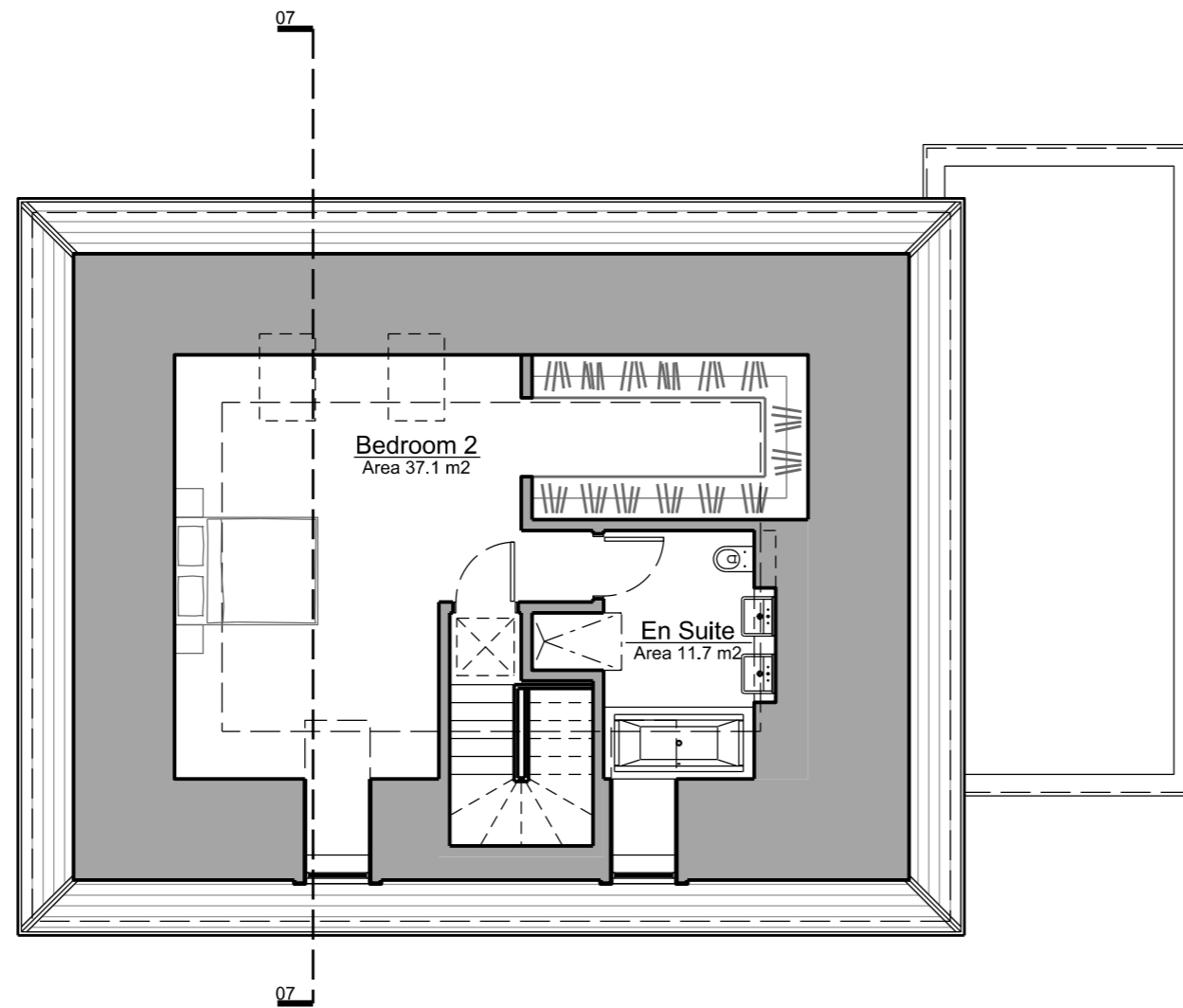
As with all the homes on the Latchmere House site it is designed to Lifetime Homes standard.



Ground Floor Plan



First Floor Plan

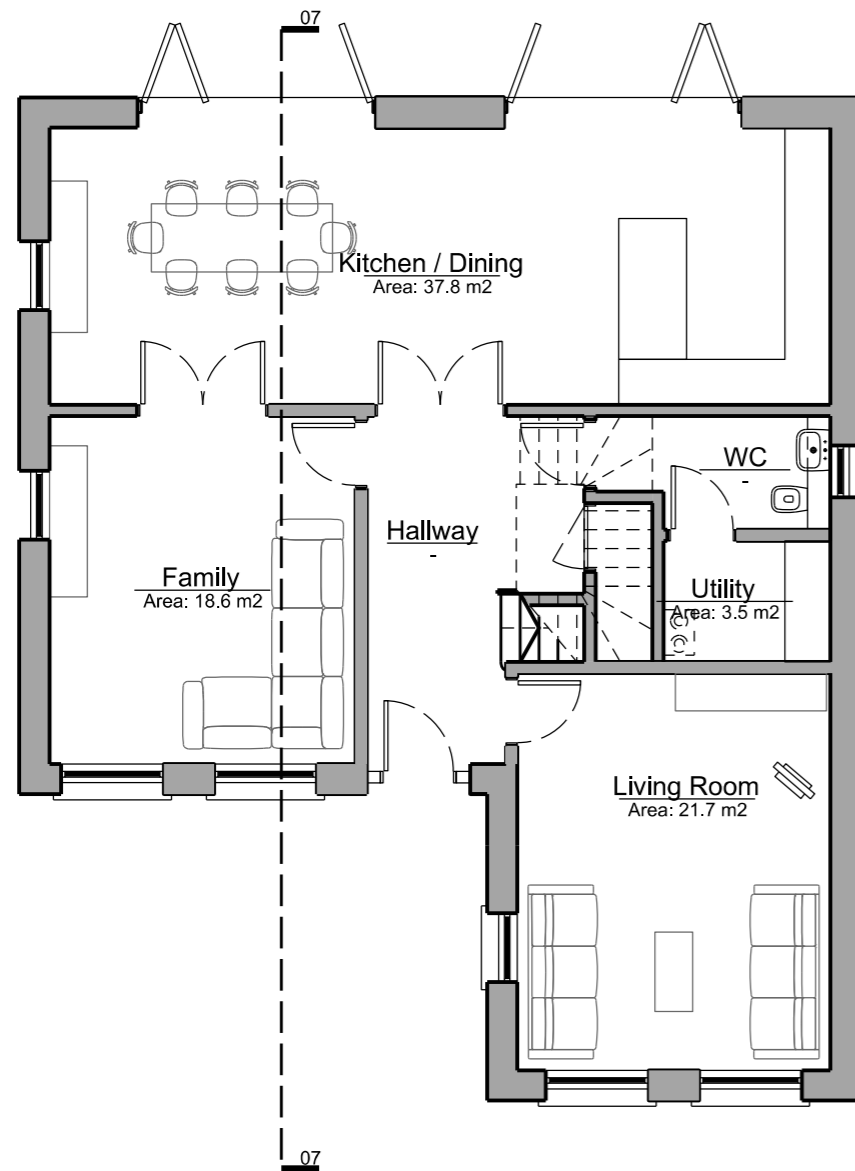


Second Floor Plan

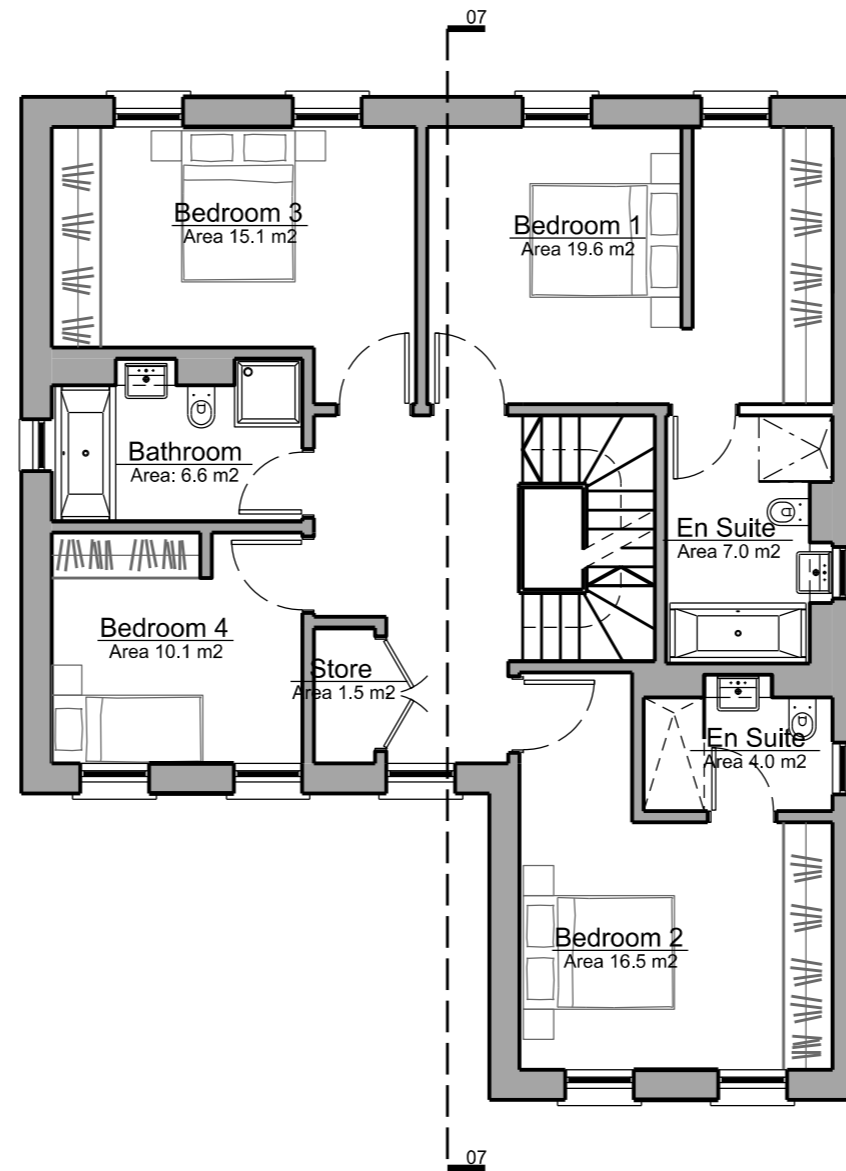
Proposed Floor Plans - House Type F3

House Type F3 is a family home incorporating a kitchen-diner, living room and five bedrooms arranged over two and a half storeys. This is also an individual detached house type and has a separate detached double garage.

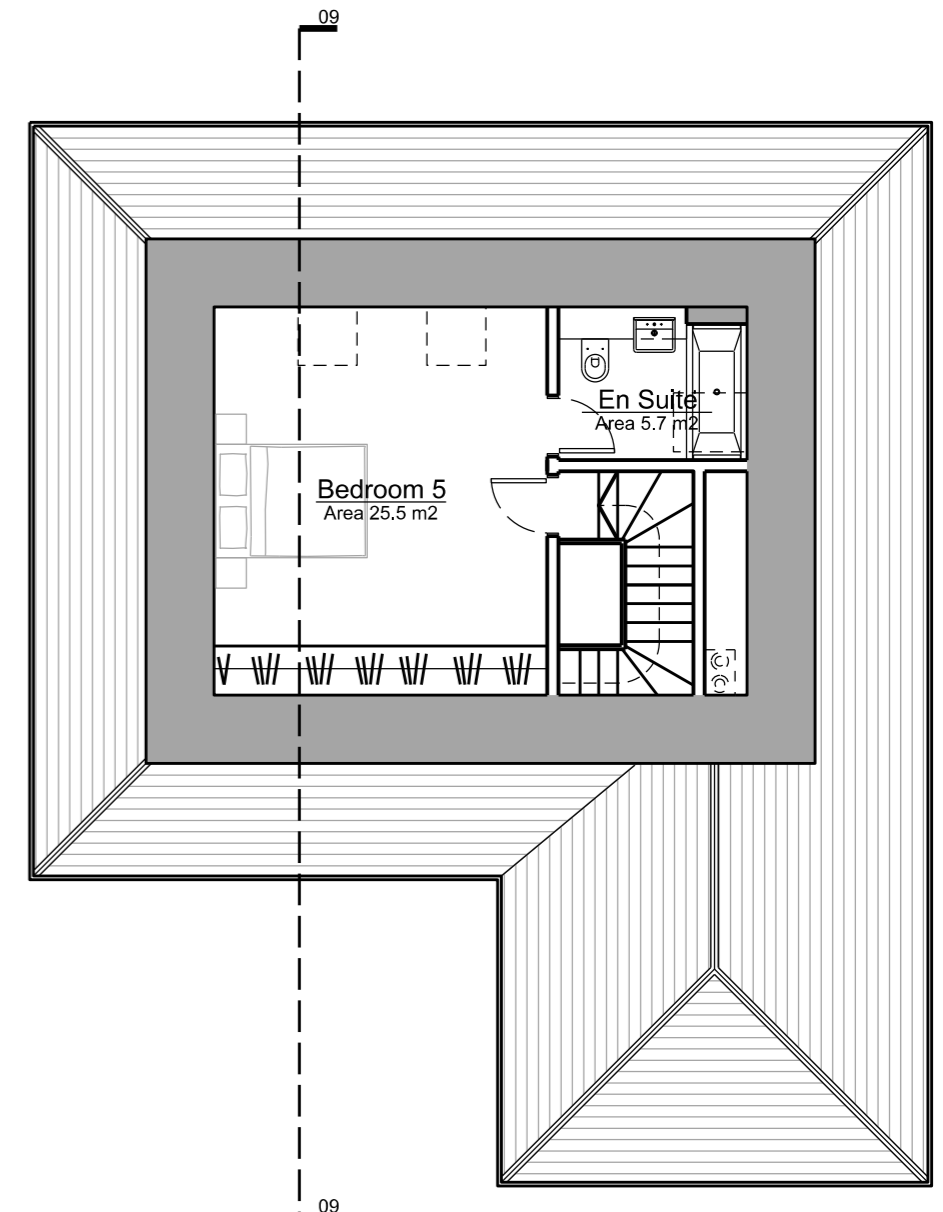
As with all the homes on the Latchmere House site it is designed to Lifetime Homes standard.



Ground Floor Plan



First Floor Plan



Second Floor Plan