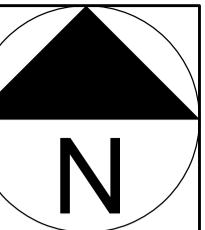




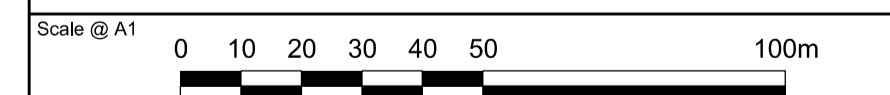
General Notes:
 Do not scale from this drawing. Use marked dimensions.
 Should any discrepancies be noted, please inform this office.
 This drawing is copyright of Matthew Alchurch Architects Limited



Key

- Application Site Boundary
- Land within Applicants control
- - - Borough Boundary

00 Issued for Planning 20/12/13 VW GS
 Rev: Description: Date Dwn by: Ckd by:



Client:
Berkeley Homes (Central London) Ltd

Project Name:
Latchmere House Scheme 2

Drawing Title:
**Site Location Plan:
 Royal Borough of Kingston Upon Thames**

| | | | | |
|-----------------------------|-----------------------------|------------------------------------|------------------------------|---------------------------|
| Project No: BKH06 | Drawing No: P_002 | Revision: 00 | Scale: 1:1250 @ A1 | Date: Dec. 2013 |
| Drawn by: VW | Checked by: GS | Drawing Status: Planning | | |