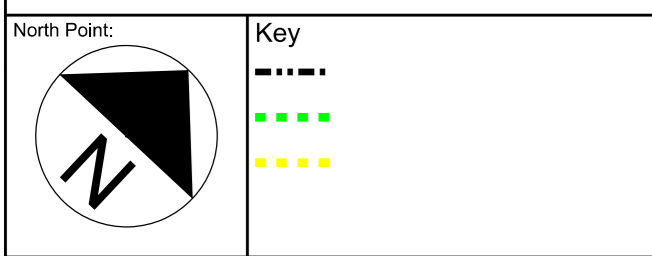




General Notes:
 Do not scale from this drawing. Use marked dimensions.
 Should any discrepancies be noted, please inform this office.
 This drawing is copyright of Matthew Alkchurch Architects Limited



Project Note:
 The internal layouts within residential apartments, houses and ancillary areas of buildings will be subject to design development.
 The precise locations of wall, internal doors, columns, risers and the detailed layouts of bathroom and kitchen areas will be the subject of non-material changes and may vary from the internal layouts set out in these plans.
 These minor alterations will not affect the position and arrangements of external doors and windows nor will they affect the relative relationship between habitable rooms and windows.
 All materials shown or highlighted are indicative only and may be subject to changes made during the detailed design development.

00 Issued for Planning
 Rev: Description:

20/12/13 VW GS
 Date Dm by: Ckd by:

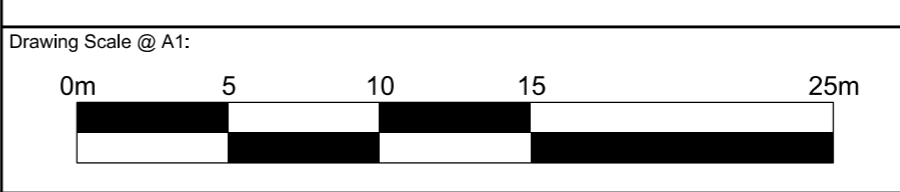


the boathouse design studio
 27 ferry road teddington tw11 9nn
 t: 020 8973 0050
 e: info@maa-architects.com
 w: www.maa-architects.com

Client:
Berkeley Homes (Central London) Ltd

Project Name:
Latchmere House Scheme 2

Drawing Title:
**Proposed Block Plans
 Ground Floor Plans
 Sheet 02**



Project No: BKH06	Drawing No: P_112	Revision: 00	Scale: 1:250 @ A1	Date: Nov. 2013
Drawn by: RW	Checked by: GS	Drawing Status: Planning		