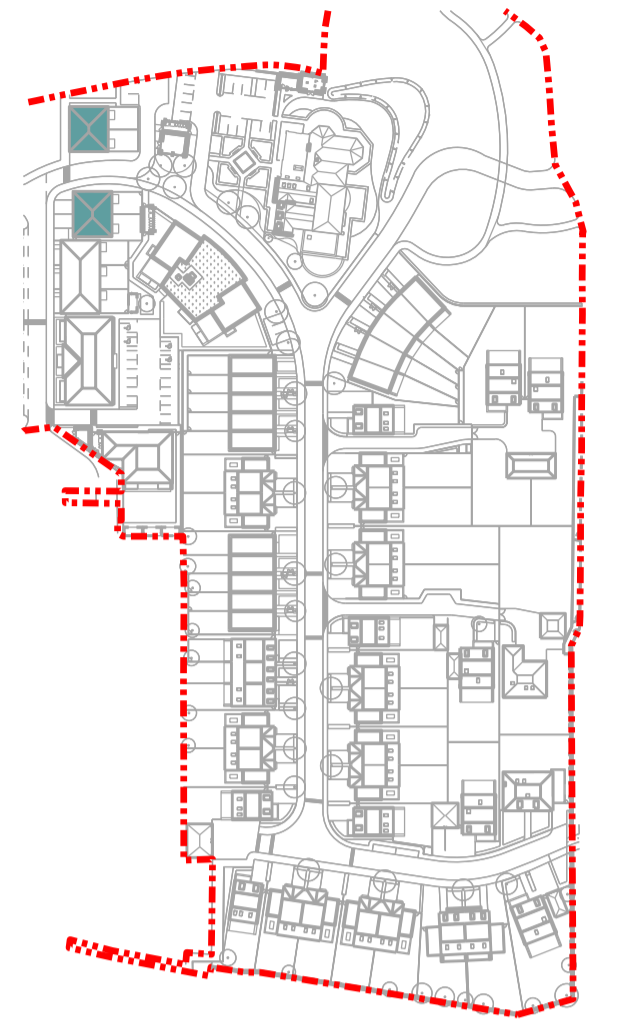
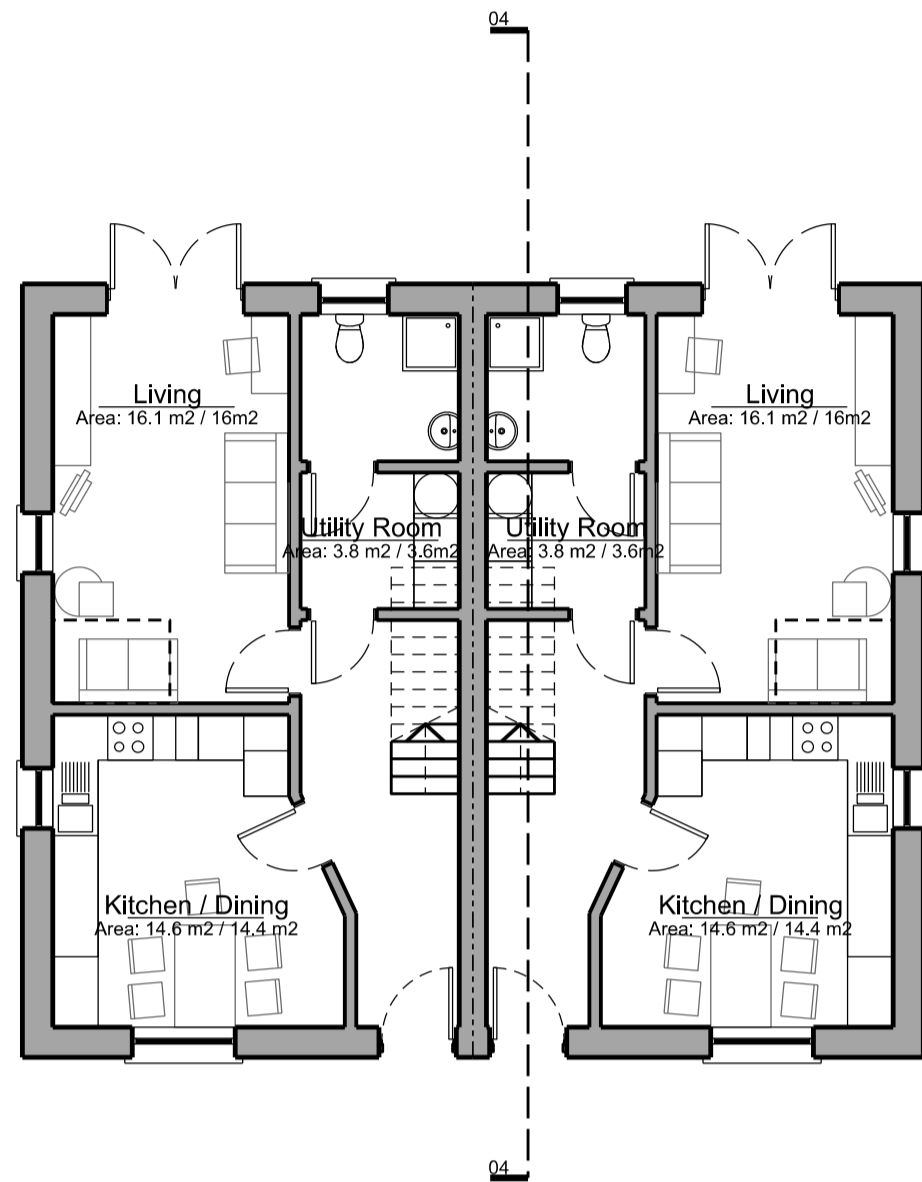


**General Notes:**  
 Do not scale from this drawing. Use marked dimensions.  
 Should any discrepancies be noted, please inform this office.  
 This drawing is copyright of Matthew Alchurch Architects Limited

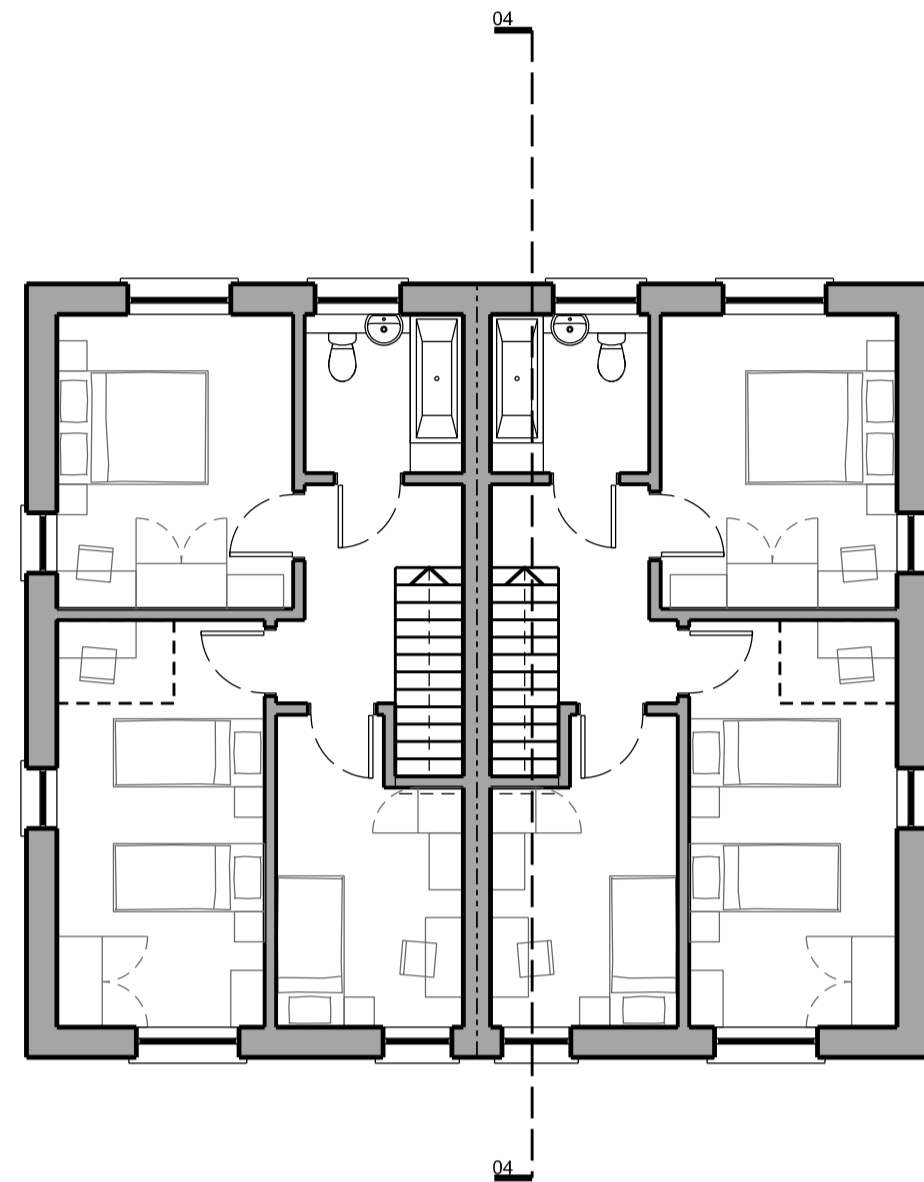
**Key Plan**



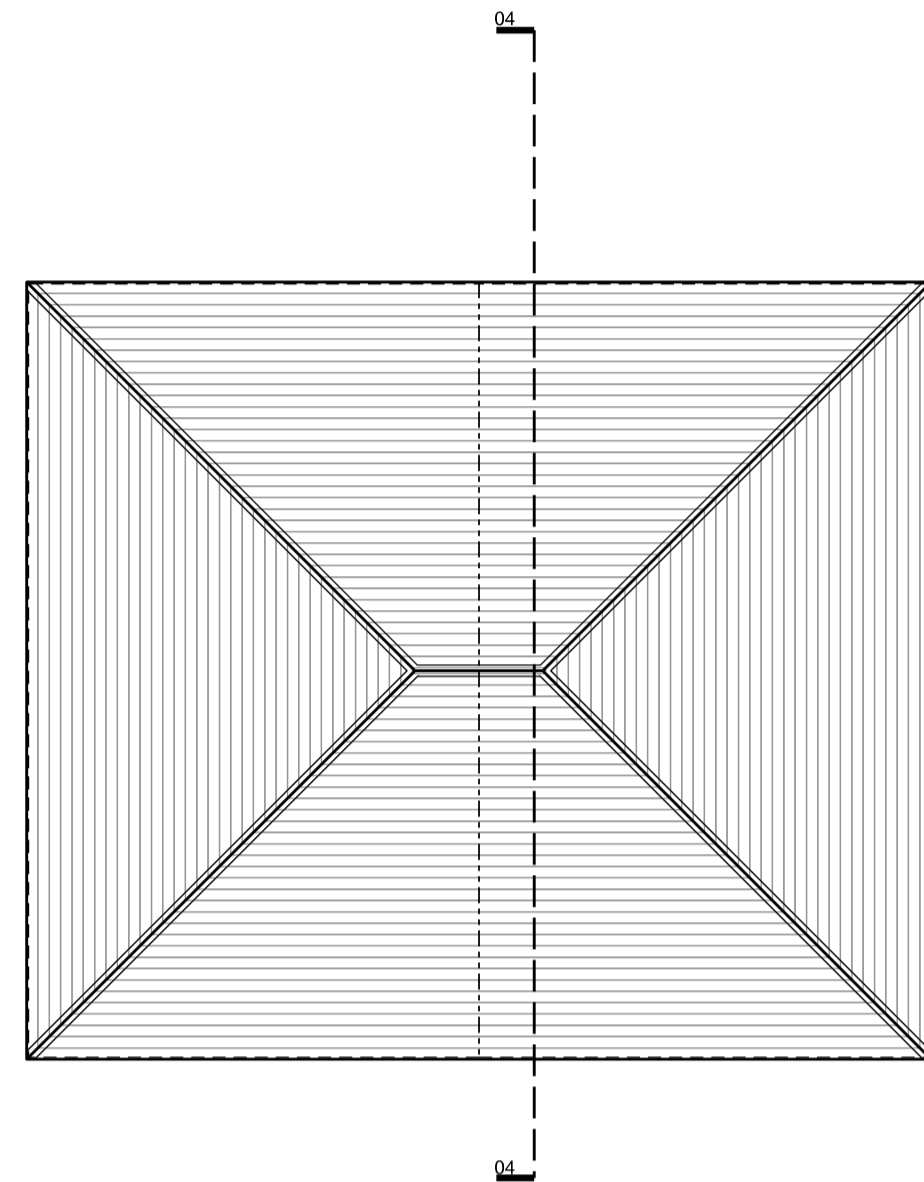
**Project Note:**  
 The internal layouts within residential apartments, houses and ancillary areas of buildings will be subject to design development.  
 The precise locations of wall, internal doors, columns, risers and the detailed layouts of bathroom and kitchen areas will be the subject of non-material changes and may vary from the internal layouts set out in these plans.  
 These minor alterations will not affect the position and arrangements of external doors and windows nor will they affect the relative relationship between habitable rooms and windows.  
 All materials shown or highlighted are indicative only and may be subject to changes made during the detailed design development.



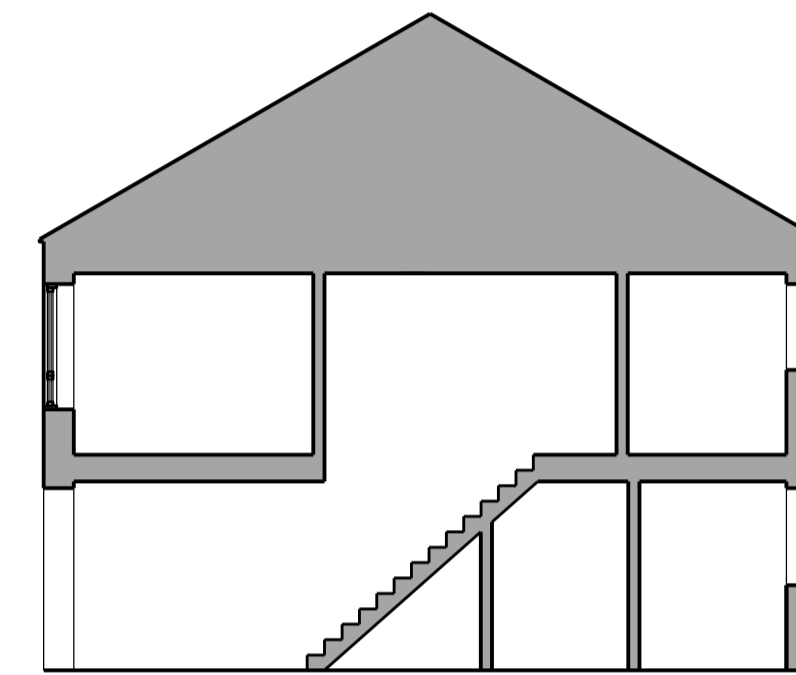
01 Ground Floor Plan  
 SCALE: 1:100



02 First Floor Plan  
 SCALE: 1:100



03 Roof Plan  
 SCALE: 1:100



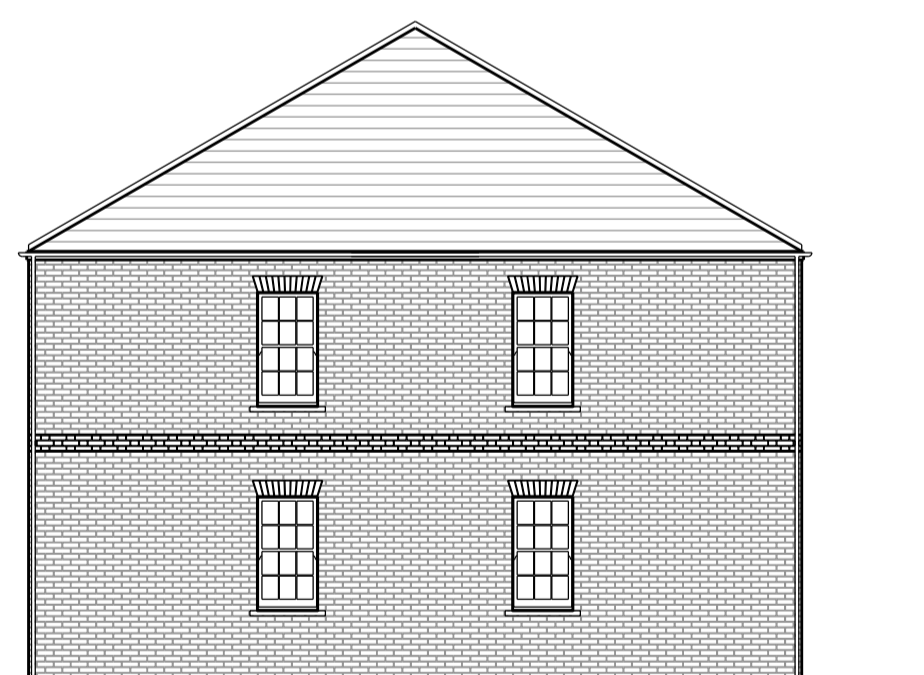
04 Long Section  
 SCALE: 1:100



05 Front Elevation  
 SCALE: 1:100



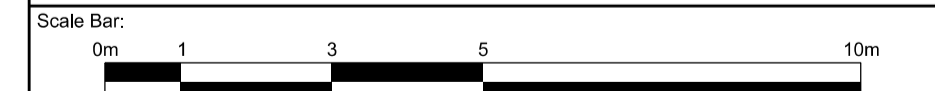
06 Rear Elevation  
 SCALE: 1:100



07 Side Elevation  
 SCALE: 1:100

00 Issued for Planning 20/12/13 RW GS  
 Rev: Description: Date Dwn by: Ckd by:

**MAA Architects**  
 the boathouse design studio  
 27 ferry road teddington tw11 9nn  
 t: 020 8973 0050  
 e: info@maa-architects.com  
 w: www.maa-architects.com



Client:  
**Berkeley Homes (Central London) Ltd**

Project Name:  
**Latchmere House Scheme 2**

Drawing Title:  
**House Type A1 Plans, Sections & Elevations**

Project No: <b>BKH06</b>	Drawing No: <b>P_211</b>	Revision: <b>00</b>	Scale: <b>1:100 @ A1</b>	Date: <b>Oct 2013</b>
Drawn by: <b>JI</b>	Checked by: <b>GS</b>	Drawing Status: <b>Planning</b>		