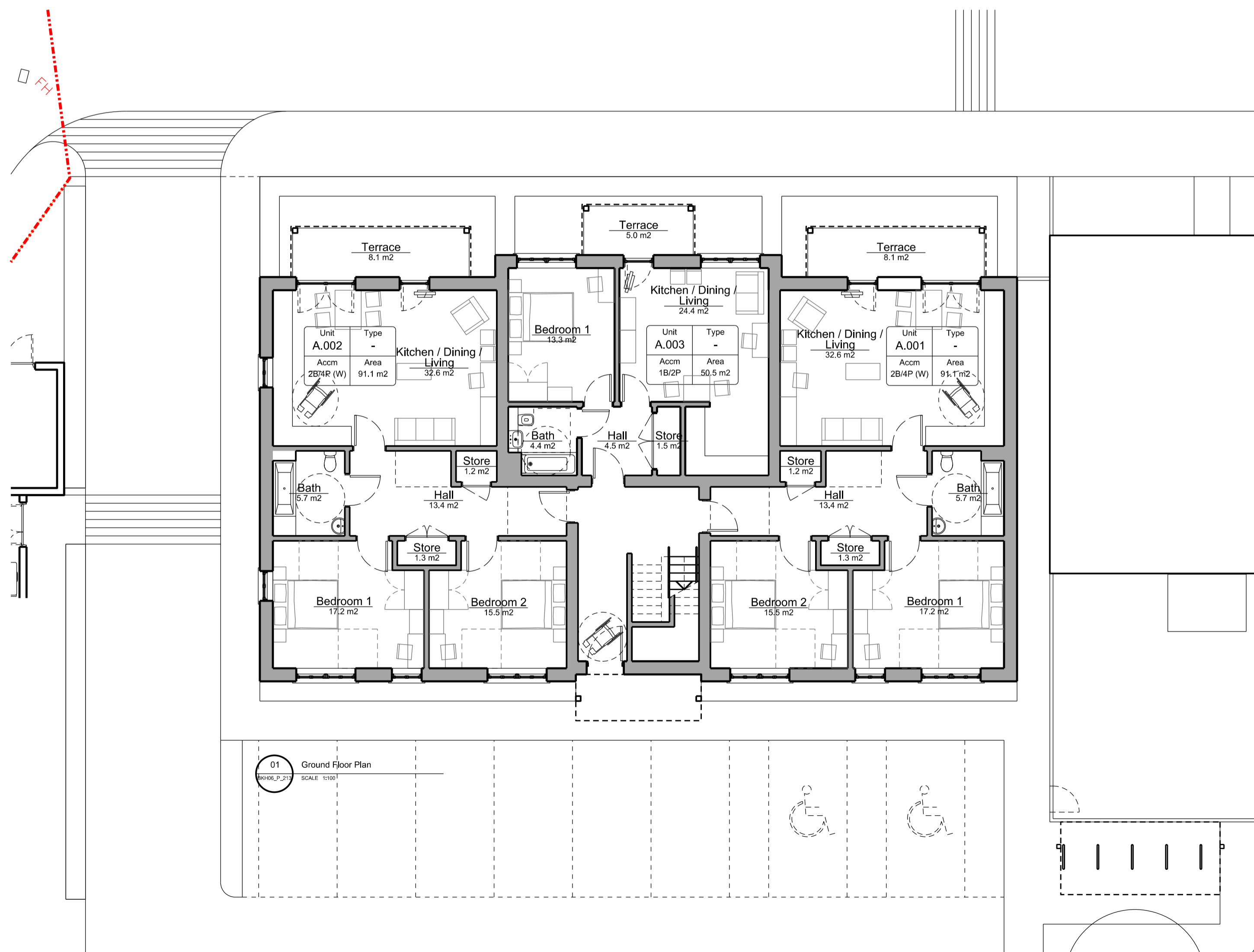
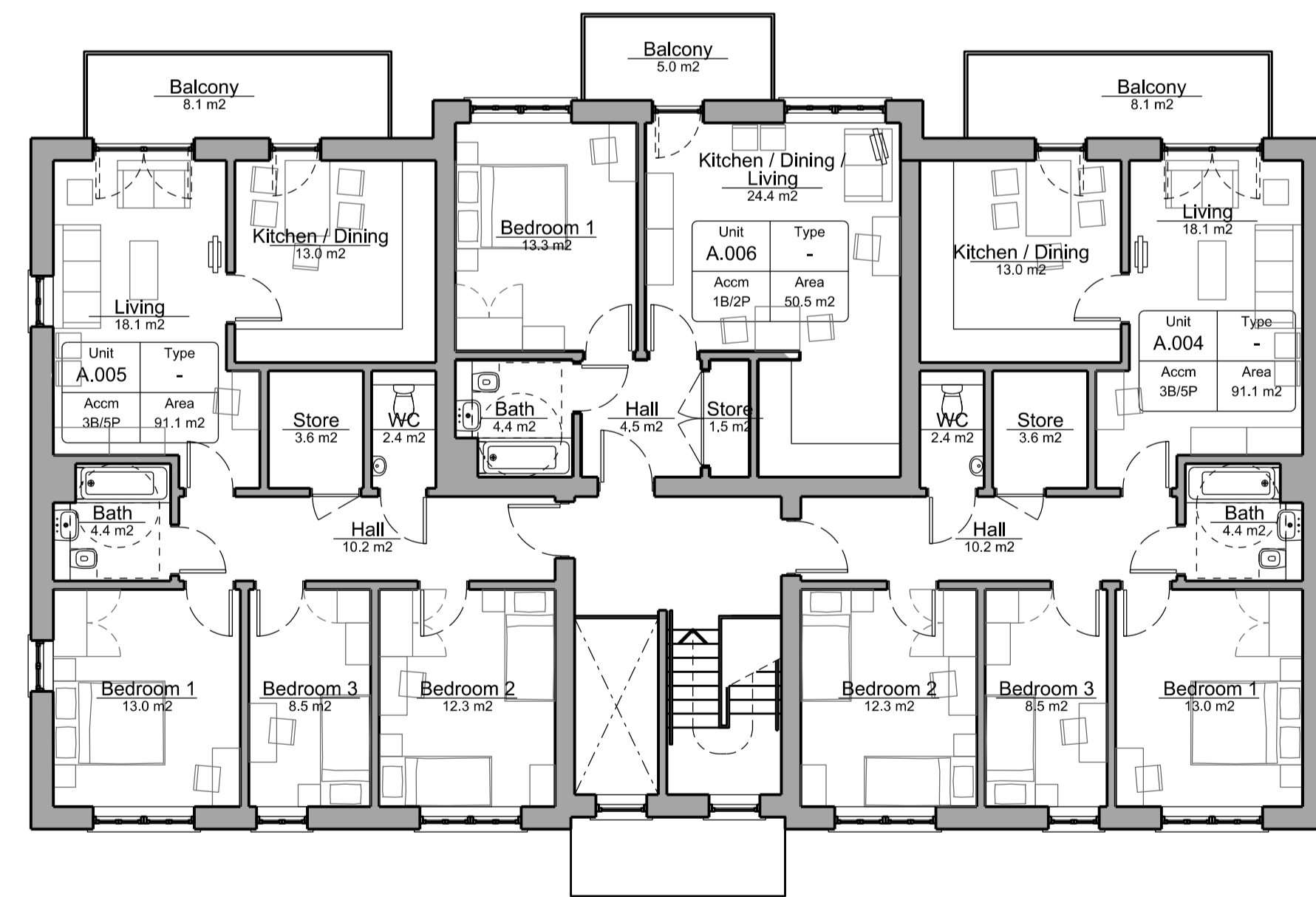


03 Roof Plan  
SCALE: 1:100

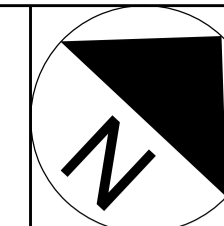


01 Ground Floor Plan  
SCALE: 1:100

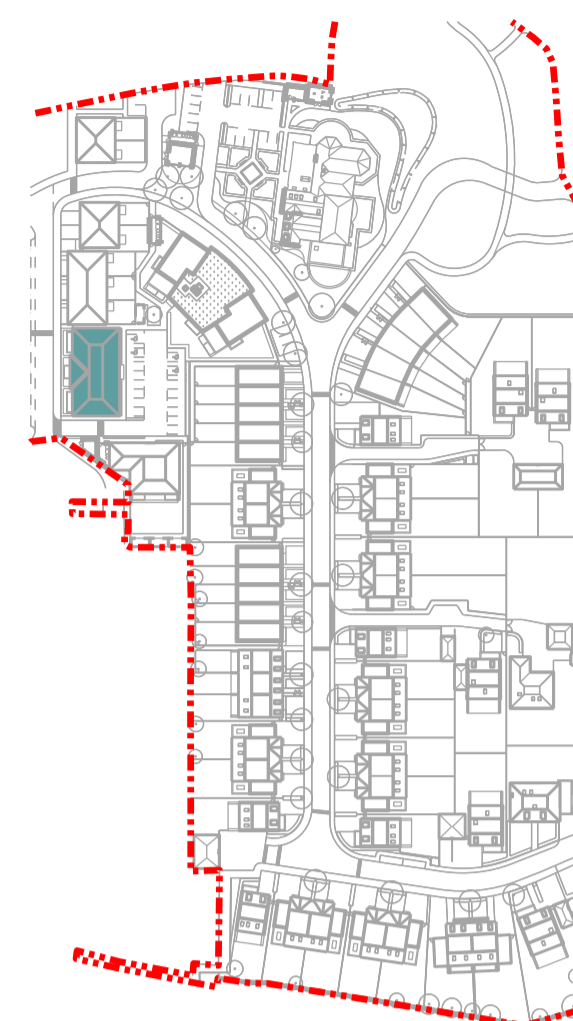


02 First Floor Plan  
SCALE: 1:100

**General Notes:**  
Do not scale from this drawing. Use marked dimensions.  
Should any discrepancies be noted, please inform this office.  
This drawing is copyright of Matthew Alchurch Architects Limited



**Key Plan**



**Project Note:**  
The internal layouts within residential apartments, houses and ancillary areas of buildings will be subject to design development.  
The precise locations of wall, internal doors, columns, risers and the detailed layouts of bathroom and kitchen areas will be the subject of non-material changes and may vary from the internal layouts set out in these plans.  
These minor alterations will not affect the position and arrangements of external doors and windows nor will they affect the relative relationship between habitable rooms and windows.  
All materials shown or highlighted are indicative only and may be subject to changes made during the detailed design development.

00 Issued for Planning 20/12/13 VW GS  
Rev: Description: Date Dm by: Ckd by:



Client:  
**Berkeley Homes (Central London) Ltd**  
Project Name:  
**Latchmere House Scheme 2**

Drawing Title:  
**Affordable Block A Floor Plans**

Project No: <b>BKH06</b>	Drawing No: <b>P_213</b>	Revision: <b>00</b>	Scale: <b>1:100 @ A1</b>	Date: <b>Oct 2013</b>
Drawn by: <b>VW</b>	Checked by: <b>GS</b>	Drawing Status: <b>Planning</b>		