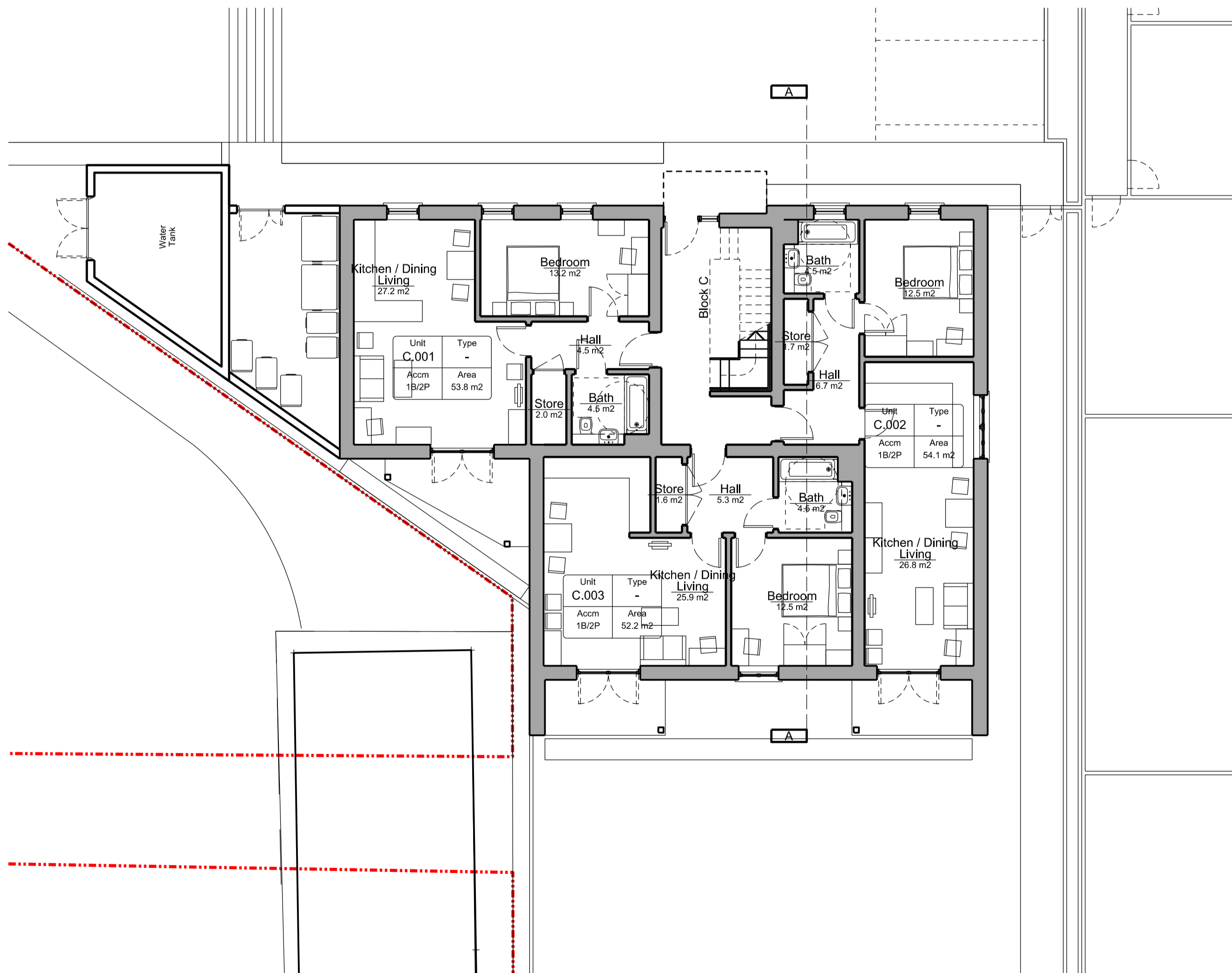
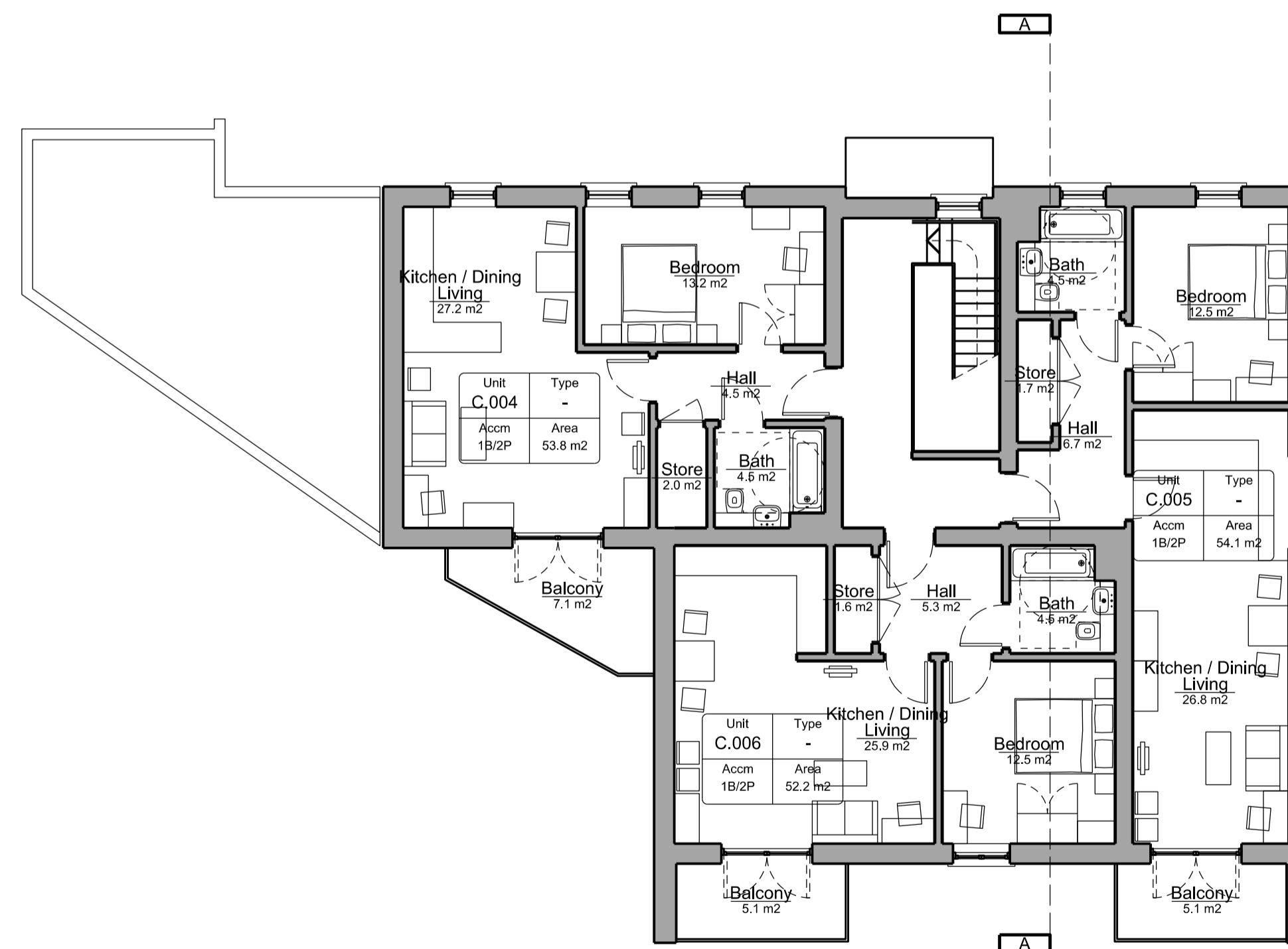


03 Roof Plan
BKH06_P_217 SCALE 1:100



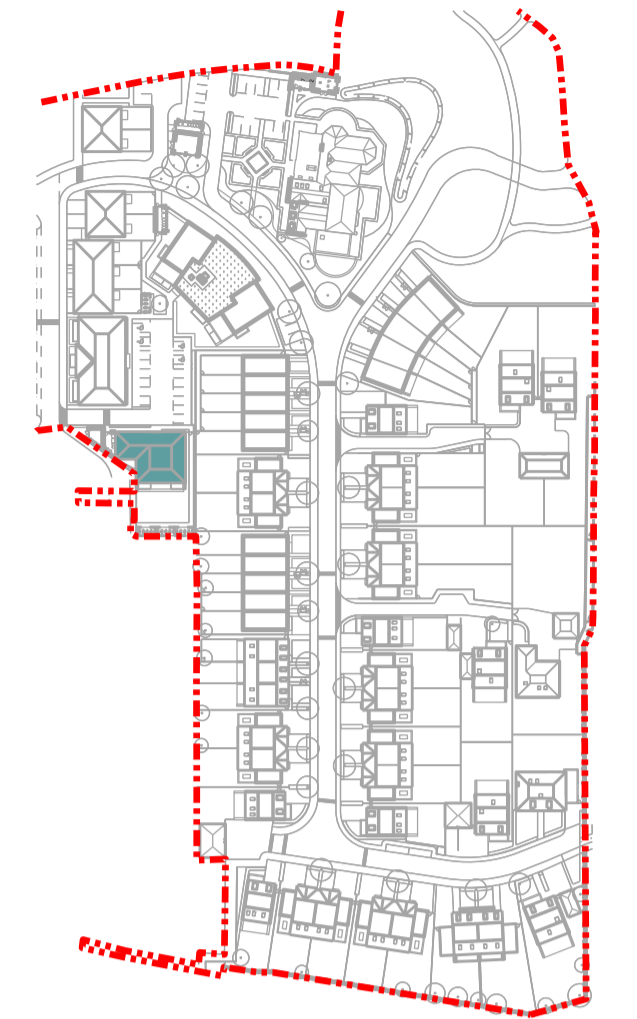
01 Ground Floor Plan
BKH06_P_217 SCALE 1:100



02 First Floor Plan
BKH06_P_217 SCALE 1:100

General Notes:
Do not scale from this drawing. Use marked dimensions. Should any discrepancies be noted, please inform this office. This drawing is copyright of Matthew Alchurch Architects Limited

Key Plan



Project Note:
The internal layouts within residential apartments, houses and ancillary areas of buildings will be subject to design development.
The precise locations of wall, internal doors, columns, risers and the detailed layouts of bathroom and kitchen areas will be the subject of non-material changes and may vary from the internal layouts set out in these plans.
These minor alterations will not affect the position and arrangements of external doors and windows nor will they affect the relative relationship between habitable rooms and windows.
All materials shown or highlighted are indicative only and may be subject to changes made during the detailed design development.

00 Issued for Planning 20/12/13 GS MA
Rev: Description: Date Dm by: Ckd by:



Client:
Berkeley Homes (Central London) Ltd

Project Name:
Latchmere House

Drawing Title:
Affordable Block C Floor Plans

Project No:	Drawing No:	Revision:	Scale:	Date:
BKH06	P_217	00	1:100 @ A1	Oct 2013
Drawn by:	Checked by:	Drawing Status:		
JL	GS	Planning		