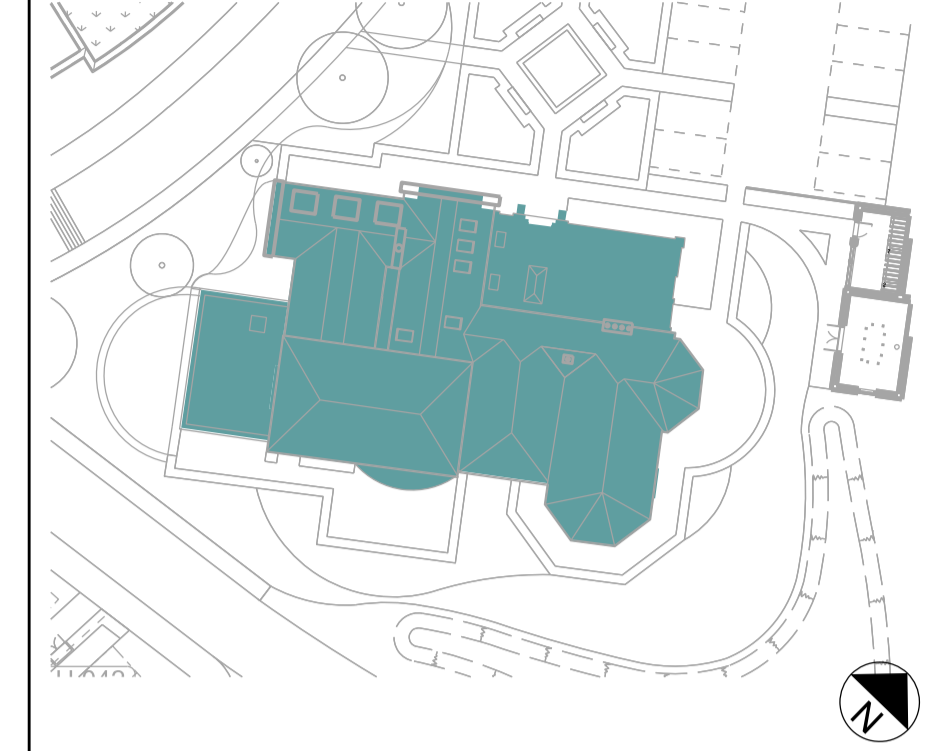


General Notes:

Do not scale from this drawing. Use marked dimensions.
Should any discrepancies be noted, please inform this office.
This drawing is copyright of Matthew Alchurch Architects Limited

Key Plan



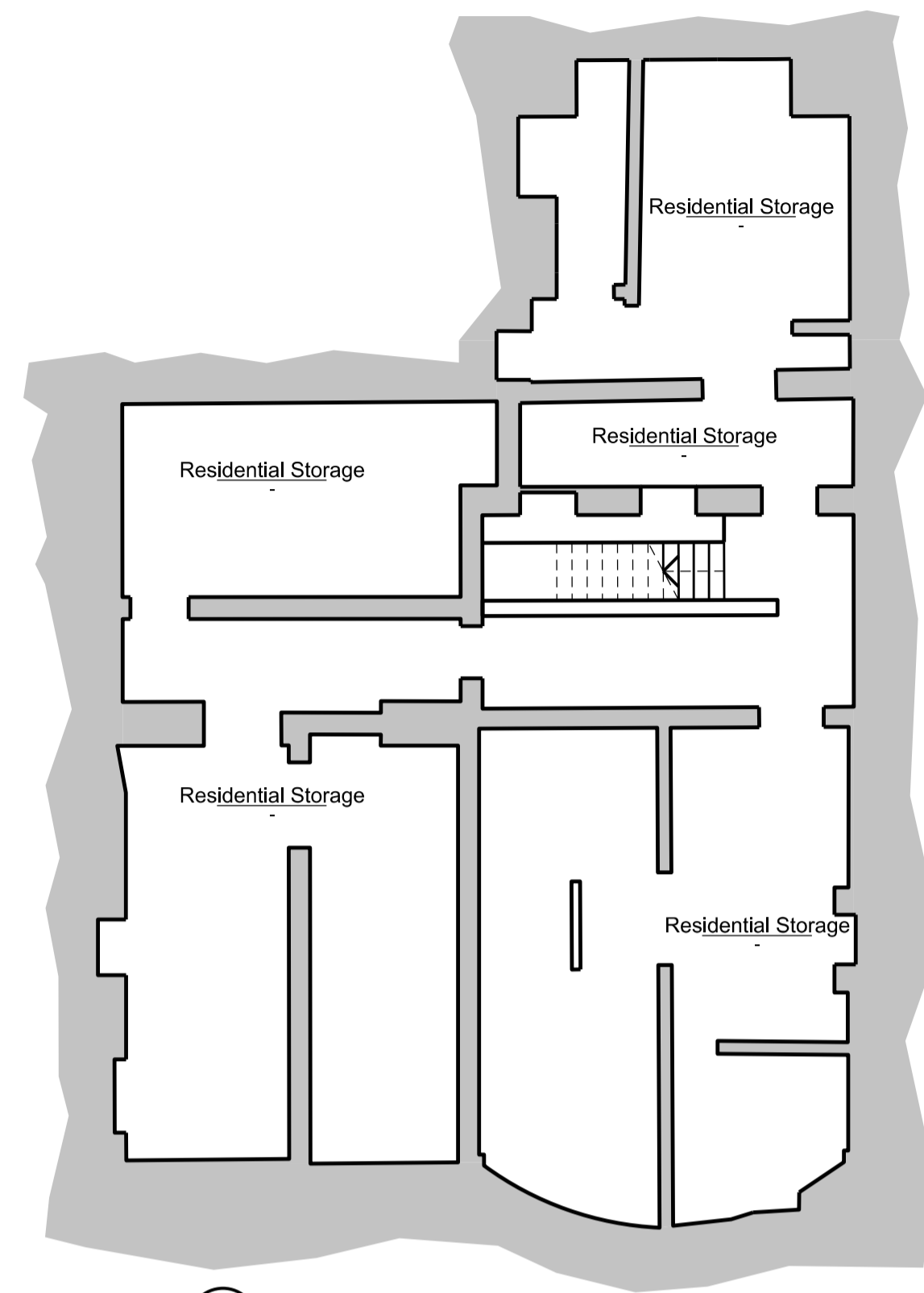
Project Note:

The internal layouts within residential apartments, houses and ancillary areas of buildings will be subject to design development.

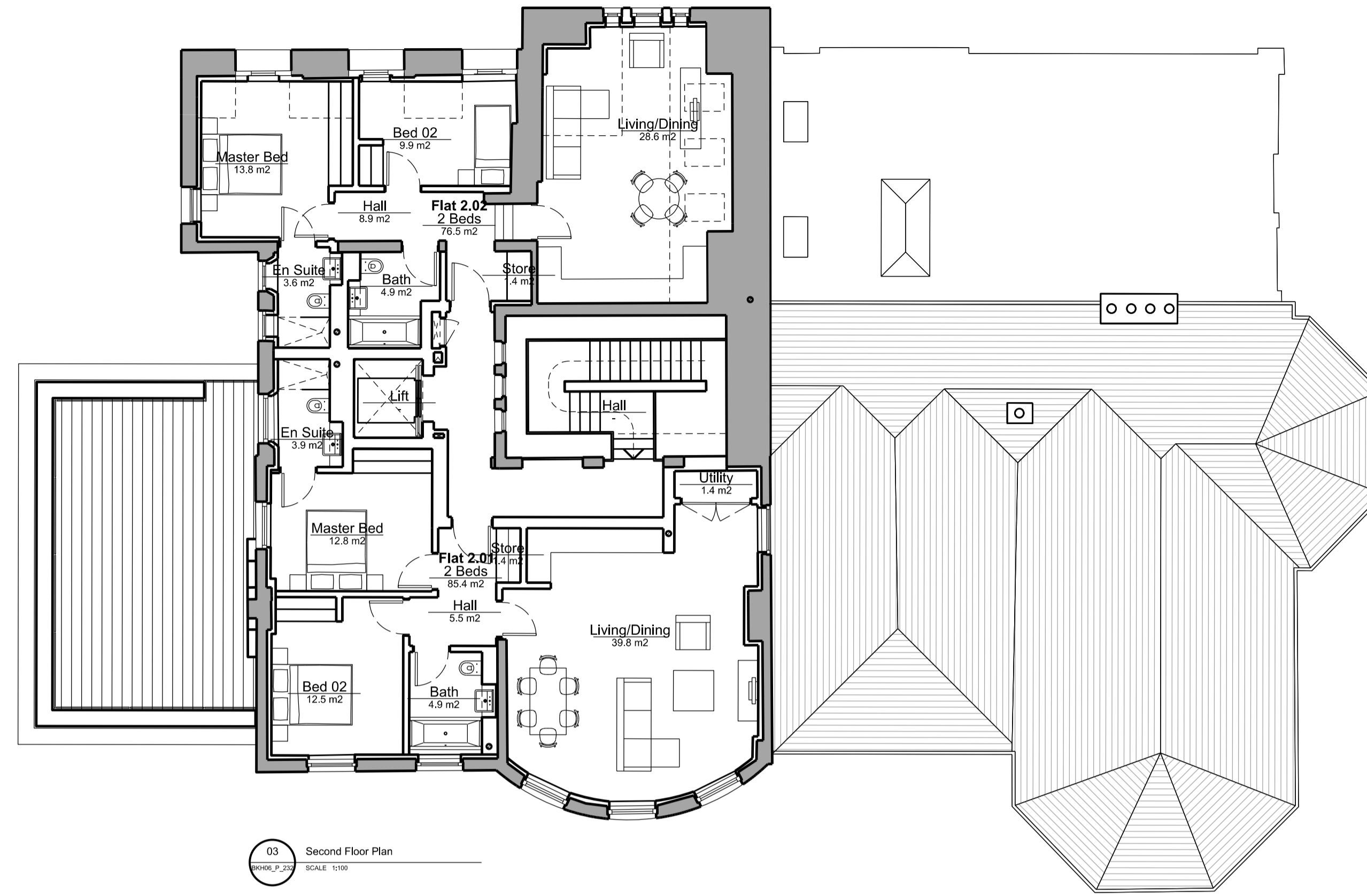
The precise locations of wall, internal doors, columns, risers and the detailed layouts of bathroom and kitchen areas will be the subject of non-material changes and may vary from the internal layouts set out in these plans.

These minor alterations will not affect the position and arrangements of external doors and windows nor will they affect the relative relationship between habitable rooms and windows.

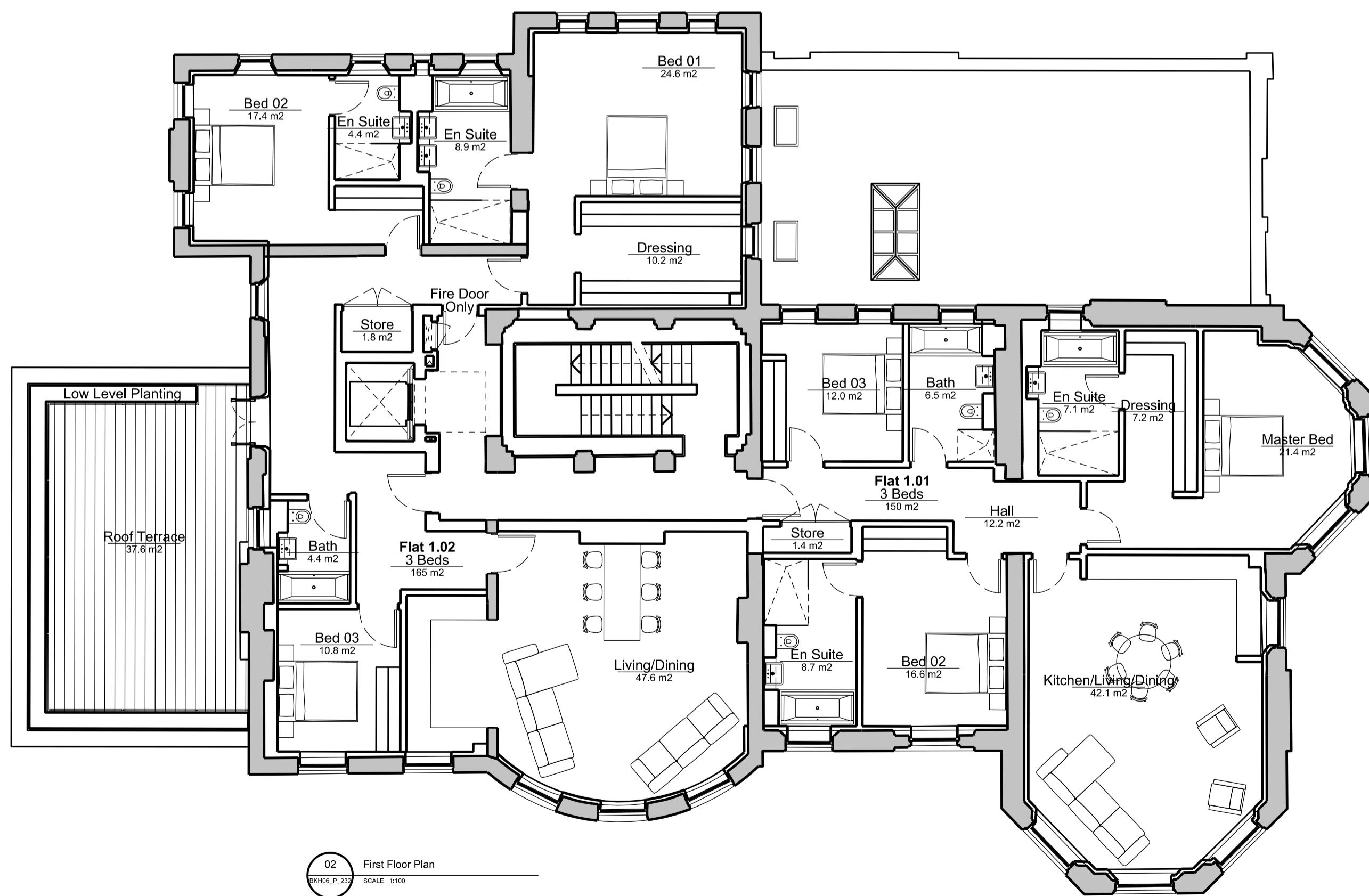
All materials shown or highlighted are indicative only and may be subject to changes made during the detailed design development.



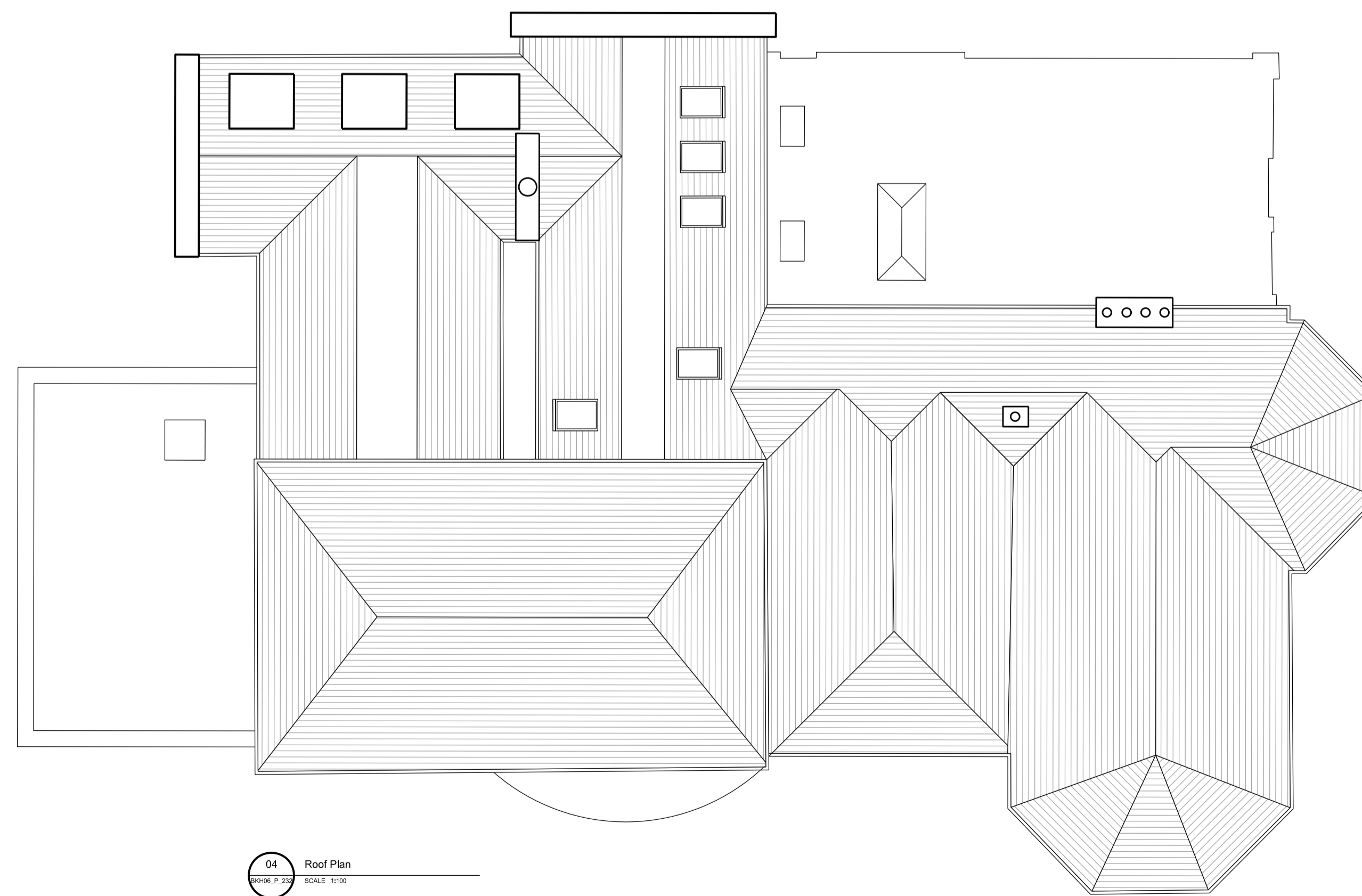
01 Basement Floor Plan
DWG: P_232 SCALE: 1:100



03 Second Floor Plan
DWG: P_232 SCALE: 1:100



02 First Floor Plan
DWG: P_232 SCALE: 1:100



04 Roof Plan
DWG: P_232 SCALE: 1:100

00 Issued for Planning 20/12/13 VW GS
Rev: Description: Date Dm by: Ckd by:



Client: **Berkeley Homes (Central London) Ltd**
Project Name: **Latchmere House Scheme 2**

Drawing Title: **Latchmere House Proposed Basement, First, Second & Roof Plan**

Project No:	Drawing No:	Revision:	Scale:	Date:
BKH06	P_232	00	1:100 @ A1	Nov. 2013
Drawn by:	Checked by:	Drawing Status:		
VW	GS	Planning		