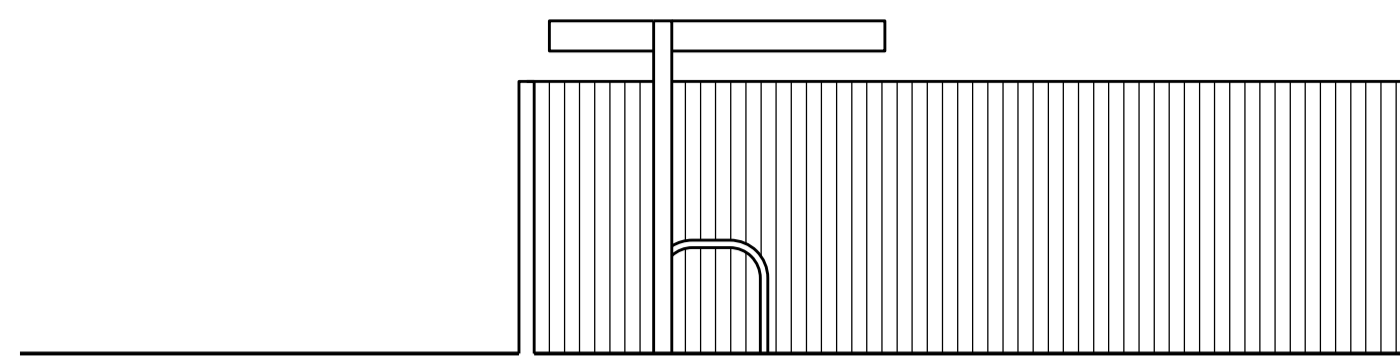
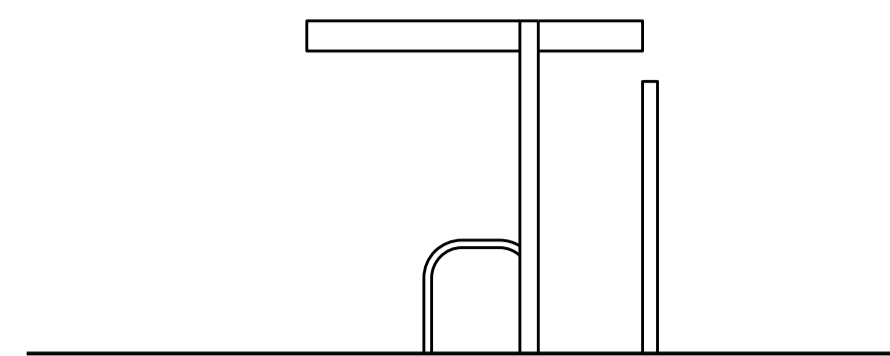


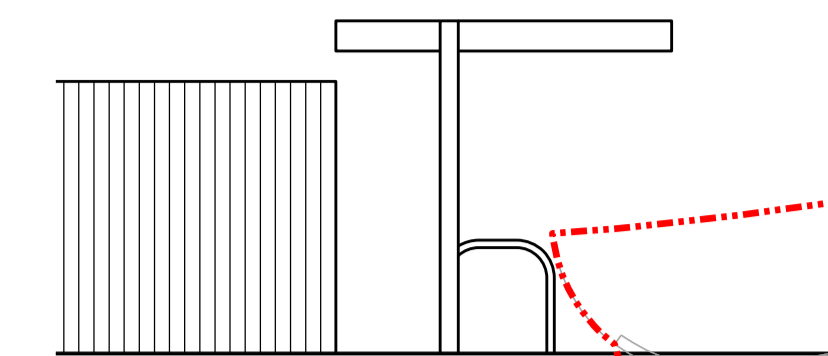
04 Cycle Store A (27 Cycle Spaces): Side Elevation
SCALE 1:50



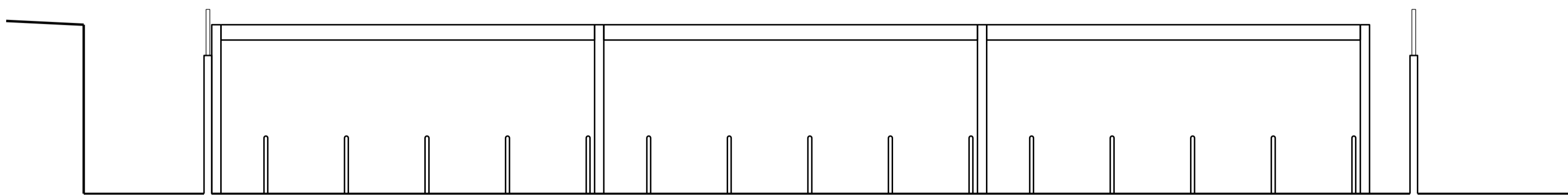
05 Cycle Store A (27 Cycle Spaces): Side Elevation
SCALE 1:50



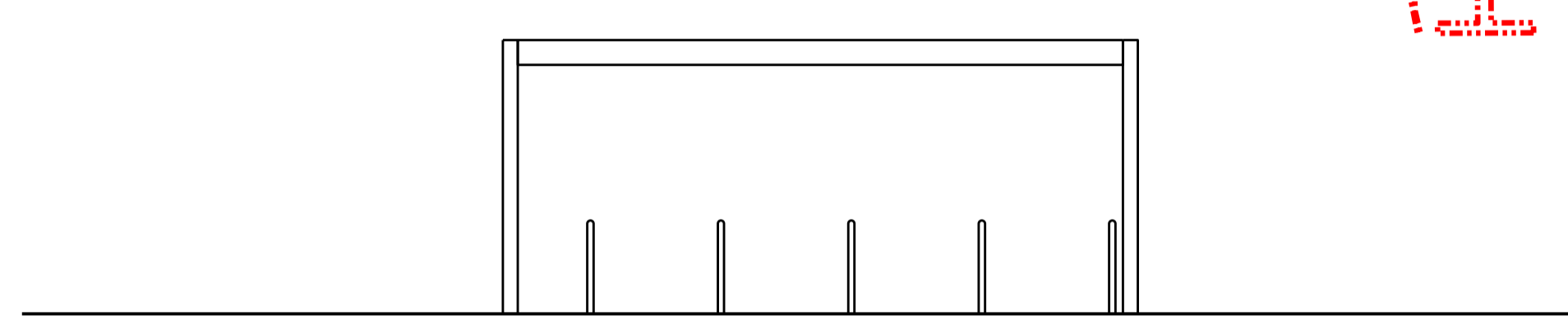
09 Cycle Store B (9 Cycle Spaces): Side Elevation
SCALE 1:50



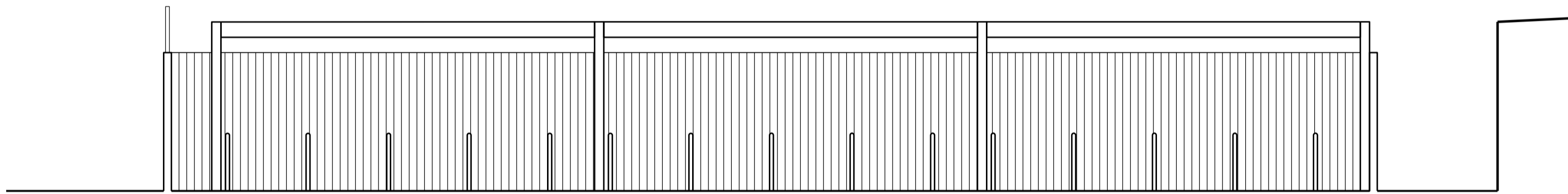
10 Cycle Store B (9 Cycle Spaces): Side Elevation
SCALE 1:50



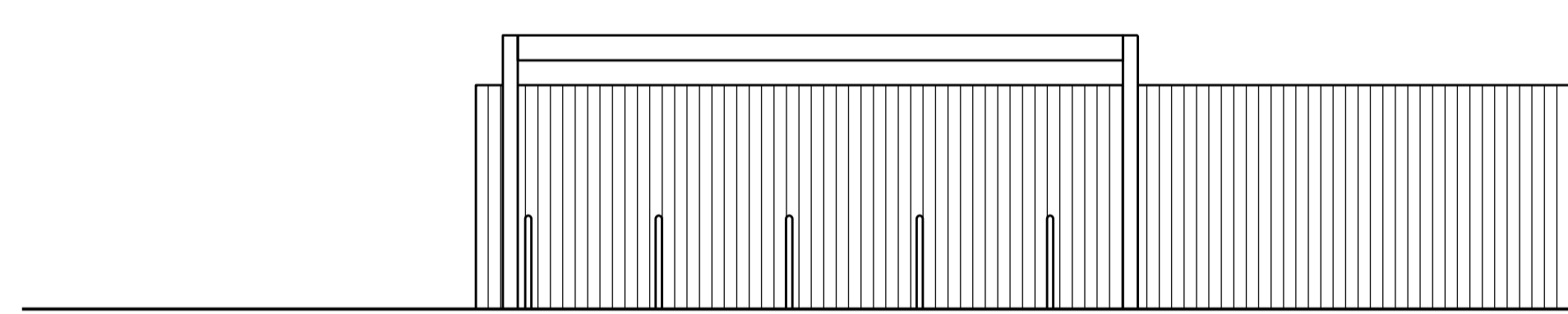
03 Cycle Store A (27 Cycle Spaces): Rear Elevation
SCALE 1:50



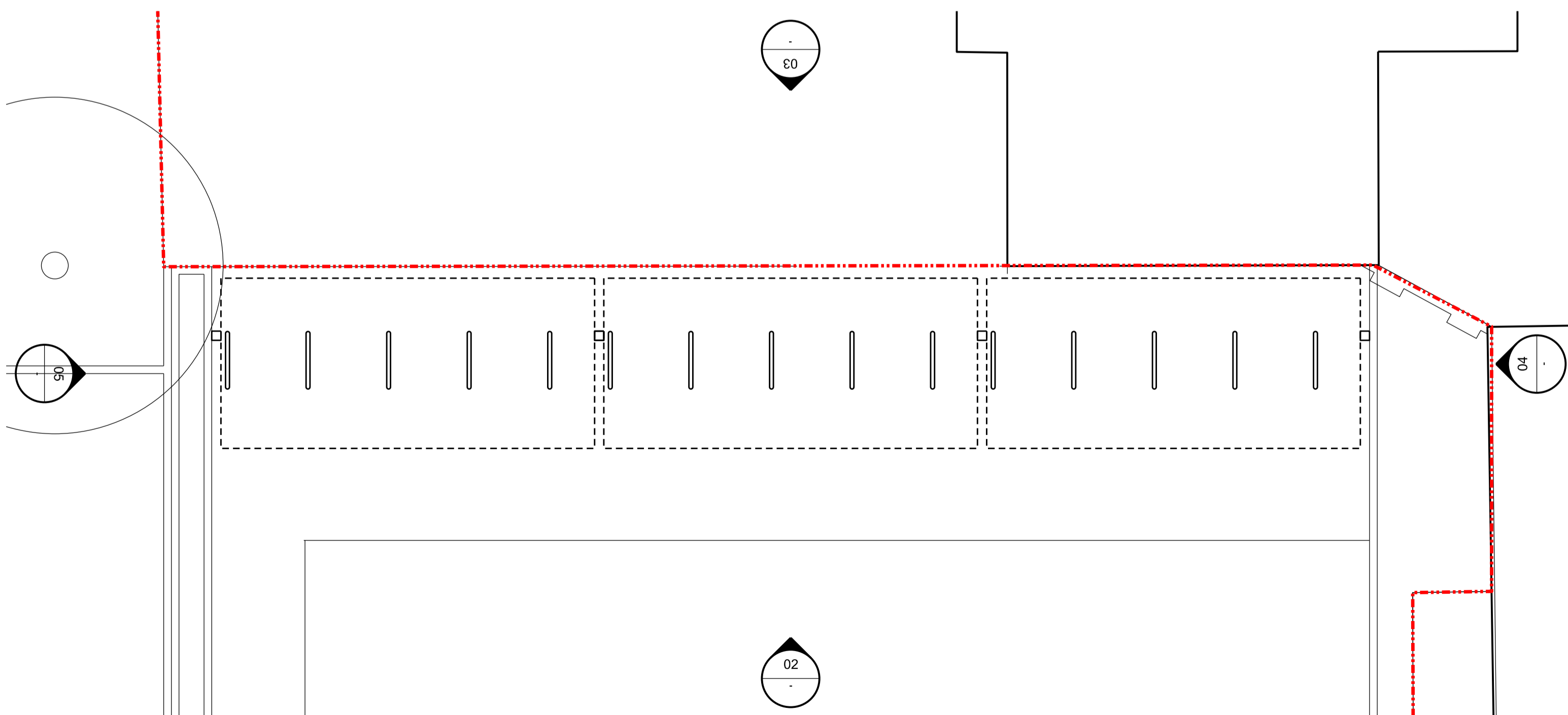
08 Cycle Store B (9 Cycle Spaces): Rear Elevation
SCALE 1:50



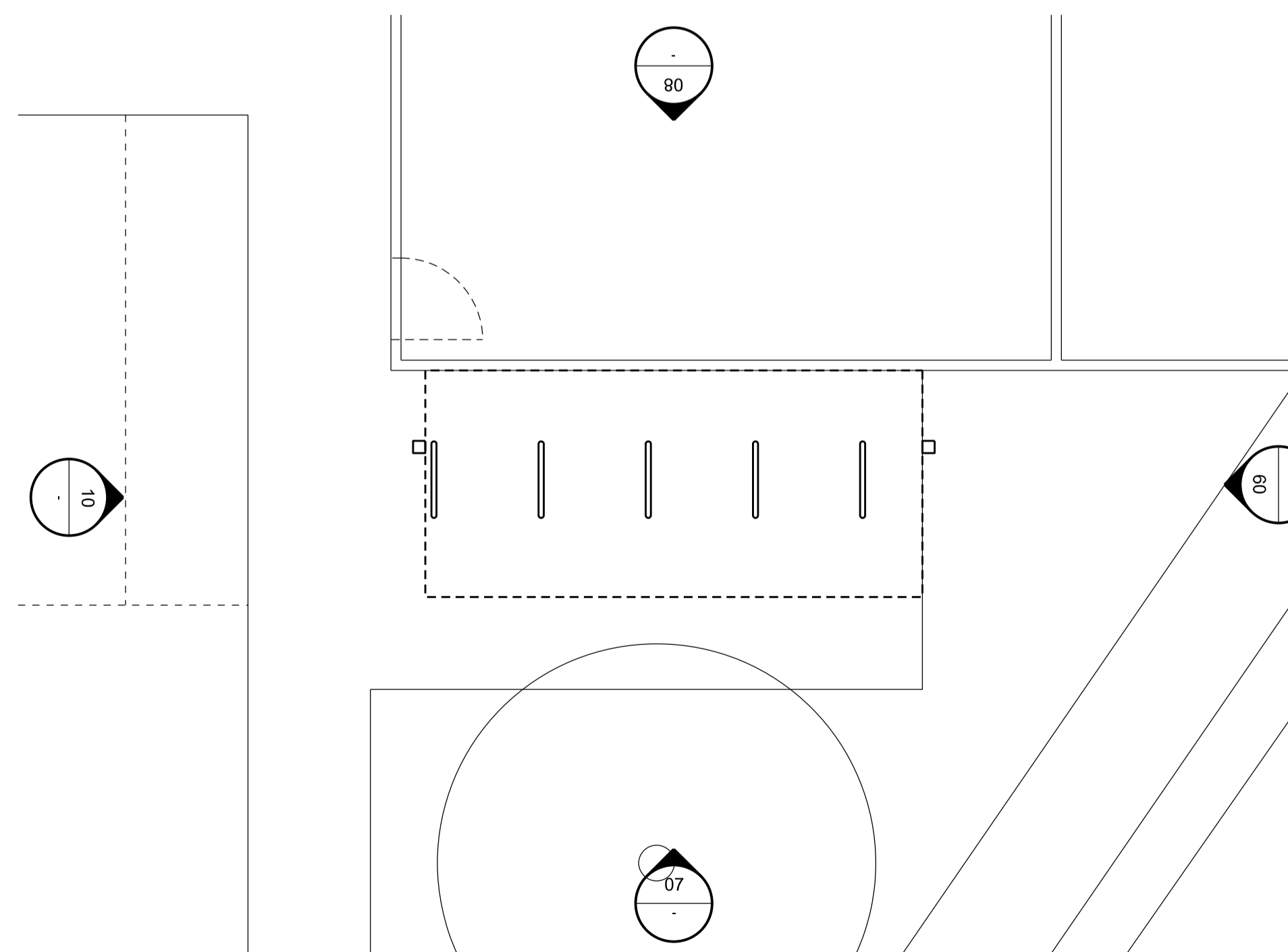
02 Cycle Store A (27 Cycle Spaces): Front Elevation
SCALE 1:50



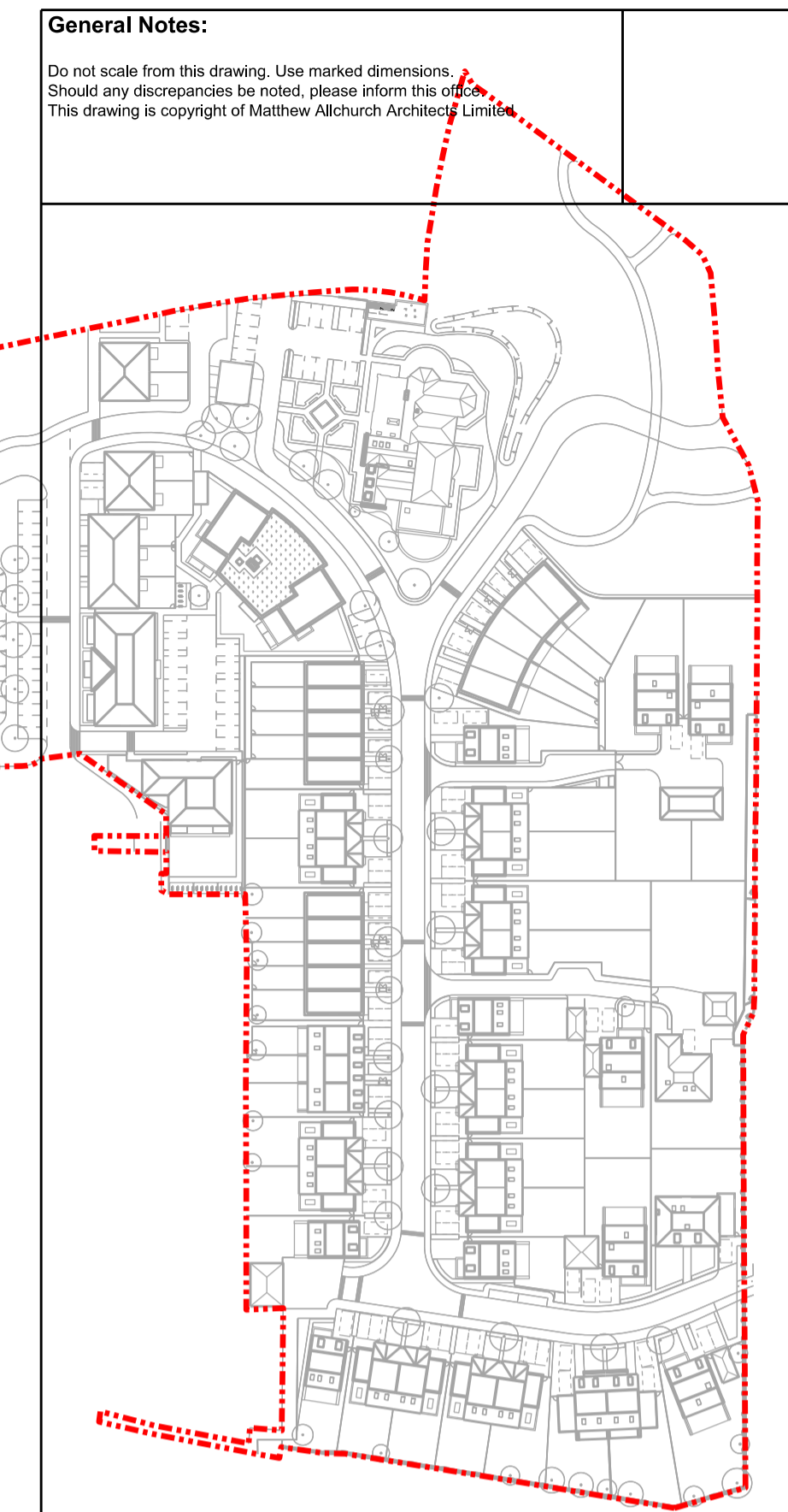
07 Cycle Store B (9 Cycle Spaces): Front Elevation
SCALE 1:50



01 Cycle Store A (27 Cycle Spaces): Plan
SCALE 1:50



06 Cycle Store B (9 Cycle Spaces): Plan
SCALE 1:50



General Notes:
Do not scale from this drawing. Use marked dimensions.
Should any discrepancies be noted, please inform this office.
This drawing is copyright of Matthew Allchurch Architects Limited.

00 Issued for Planning 20/12/13 VP GS
Rev: Description: Date Dm by: Ckd by:

MAA Architects
the boathouse design studio
27 ferry road teddington tw11 9nn
t: 020 8973 0050
e: info@maa-architects.com
w: www.maa-architects.com



Client:
Berkeley Homes (Central London) Ltd

Project Name:
Latchmere House Scheme 2

Drawing Title:
**Ancillary Buildings:
Block A, B, & C:
Communal Cycle Shelters**

Project No: BKH06	Drawing No: P_239	Revision: 00	Scale: 1:50 @ A1	Date: Dec. 2013
Drawn by: VW	Checked by: GS	Drawing Status: Planning		