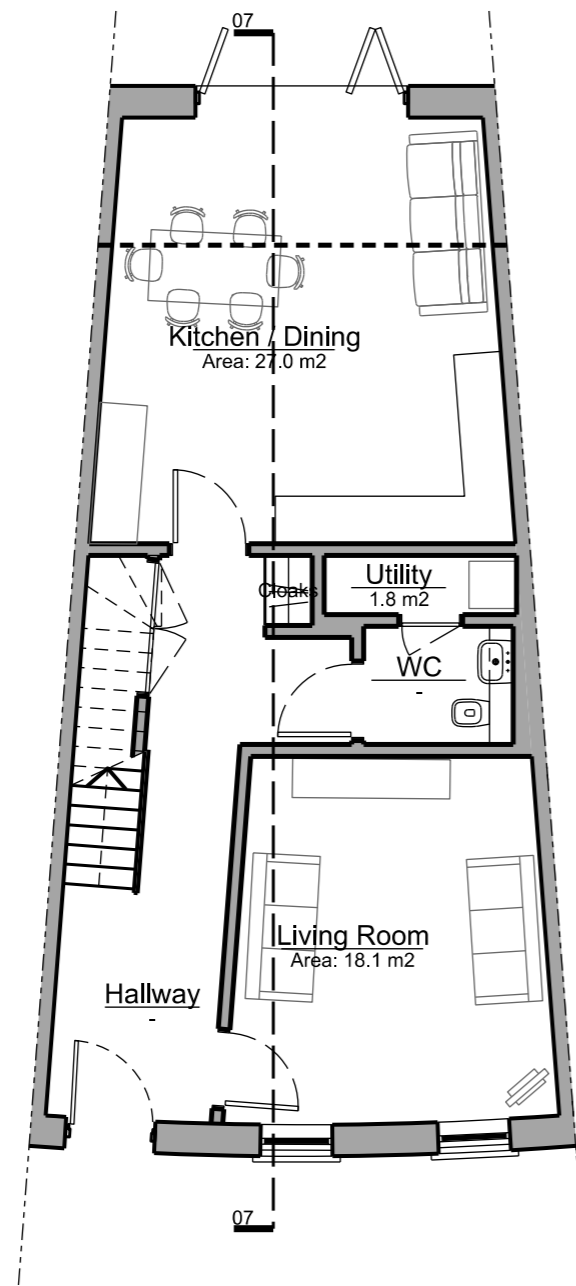


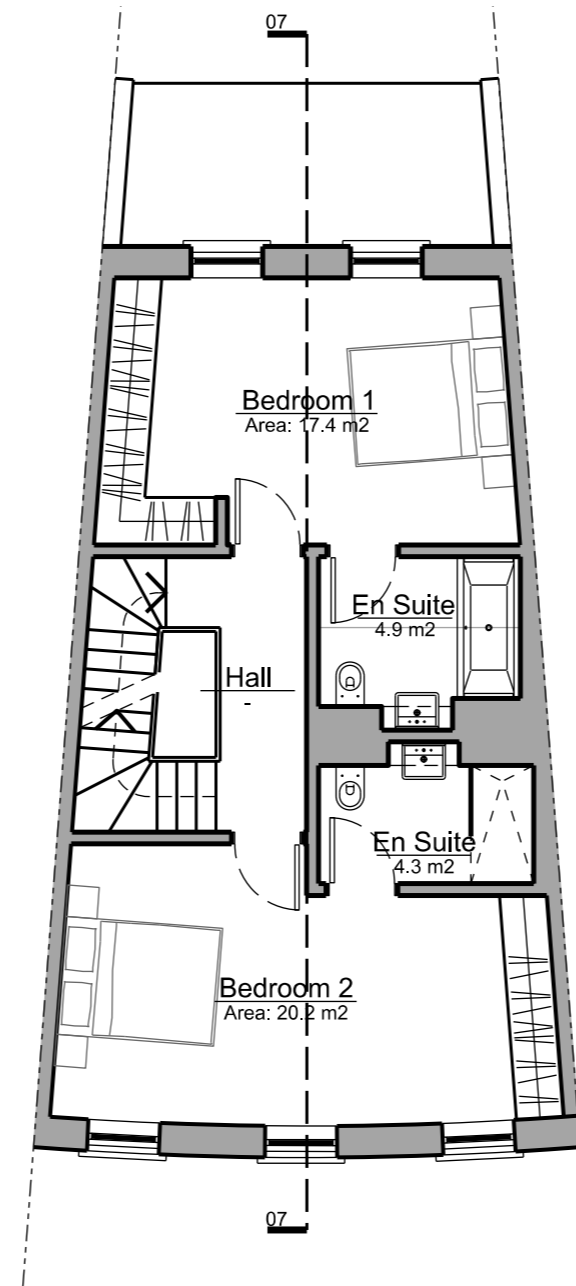
Proposed Floor Plans - House Type B4

House Type B4 is a family home incorporating a kitchen-diner, living room and four bedrooms arranged over three storeys. This house makes up the mid-terrace units on the crescents that front Latchmere House.

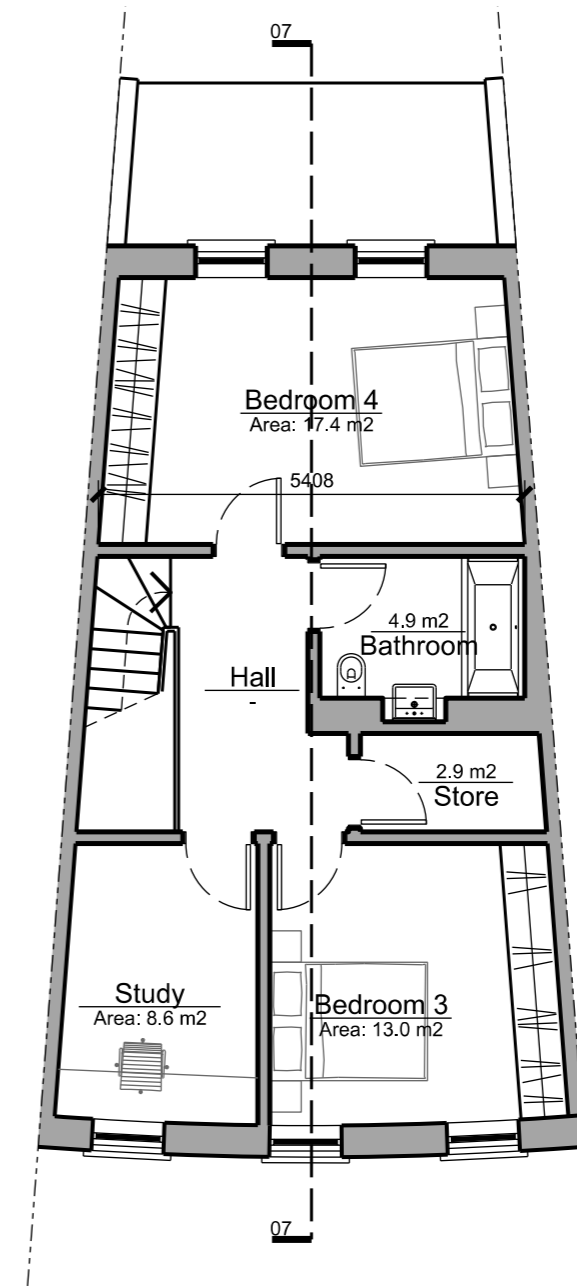
As with all the homes on the Latchmere House site it is designed to Lifetime Homes standards.



Ground Floor Plan



First Floor Plan



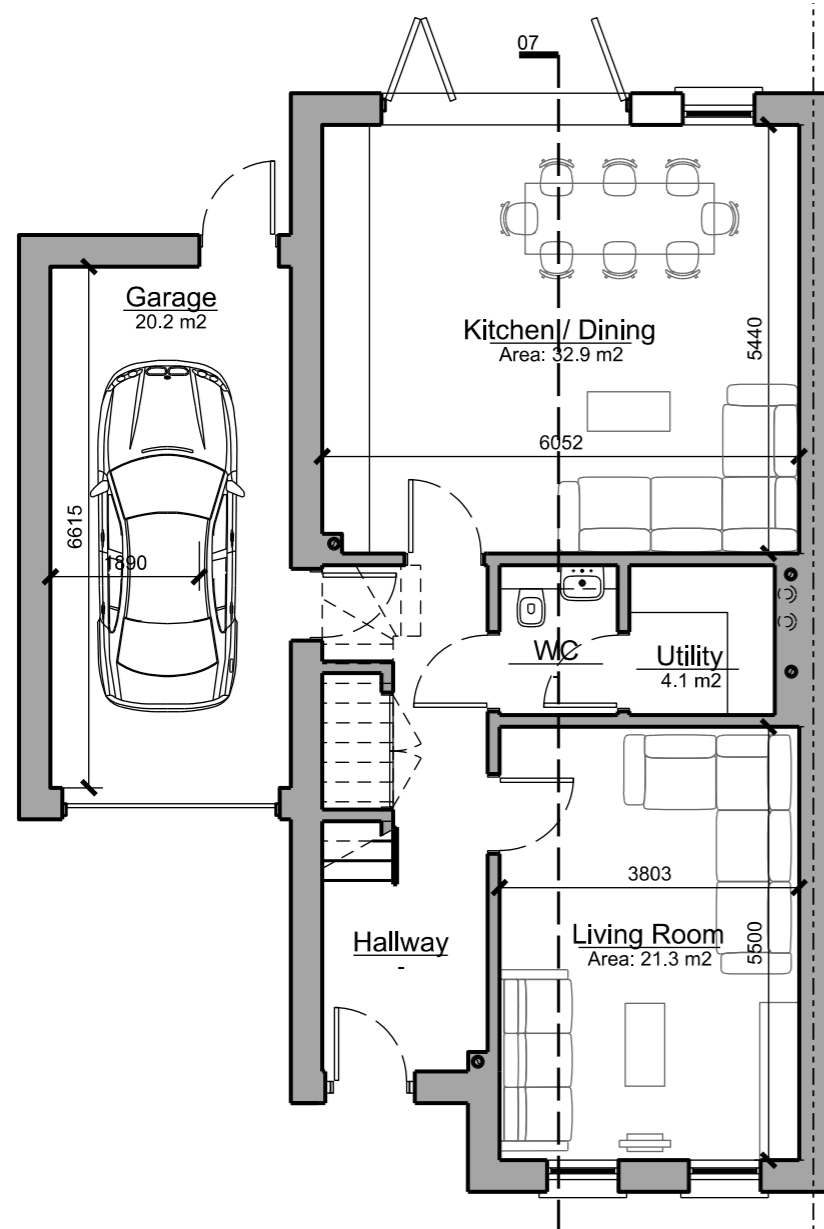
Second Floor Plan

House Types

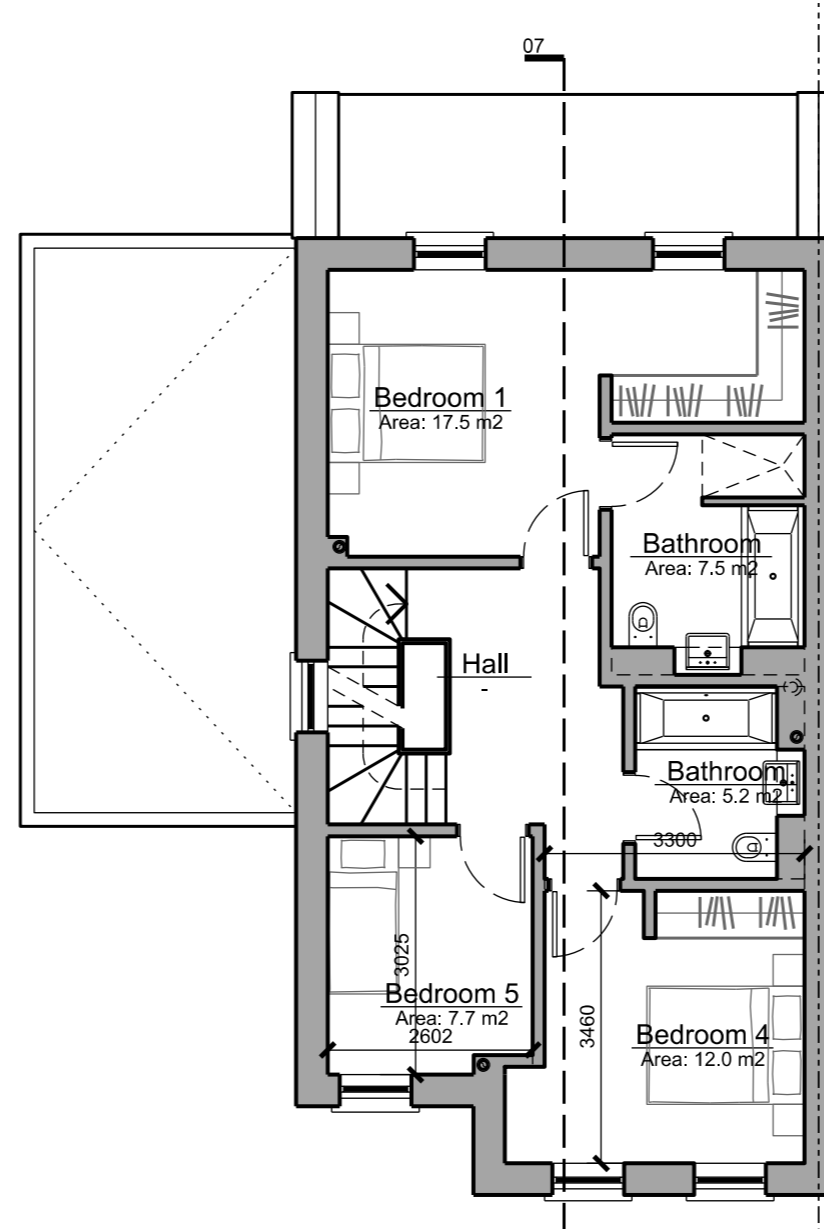
Proposed Floor Plans - House Type C1

House Type C1 is a family home incorporating a kitchen-diner, living room and five bedrooms arranged over two and half storeys. This is a semi-detached house with an attached garage and on-plot parking.

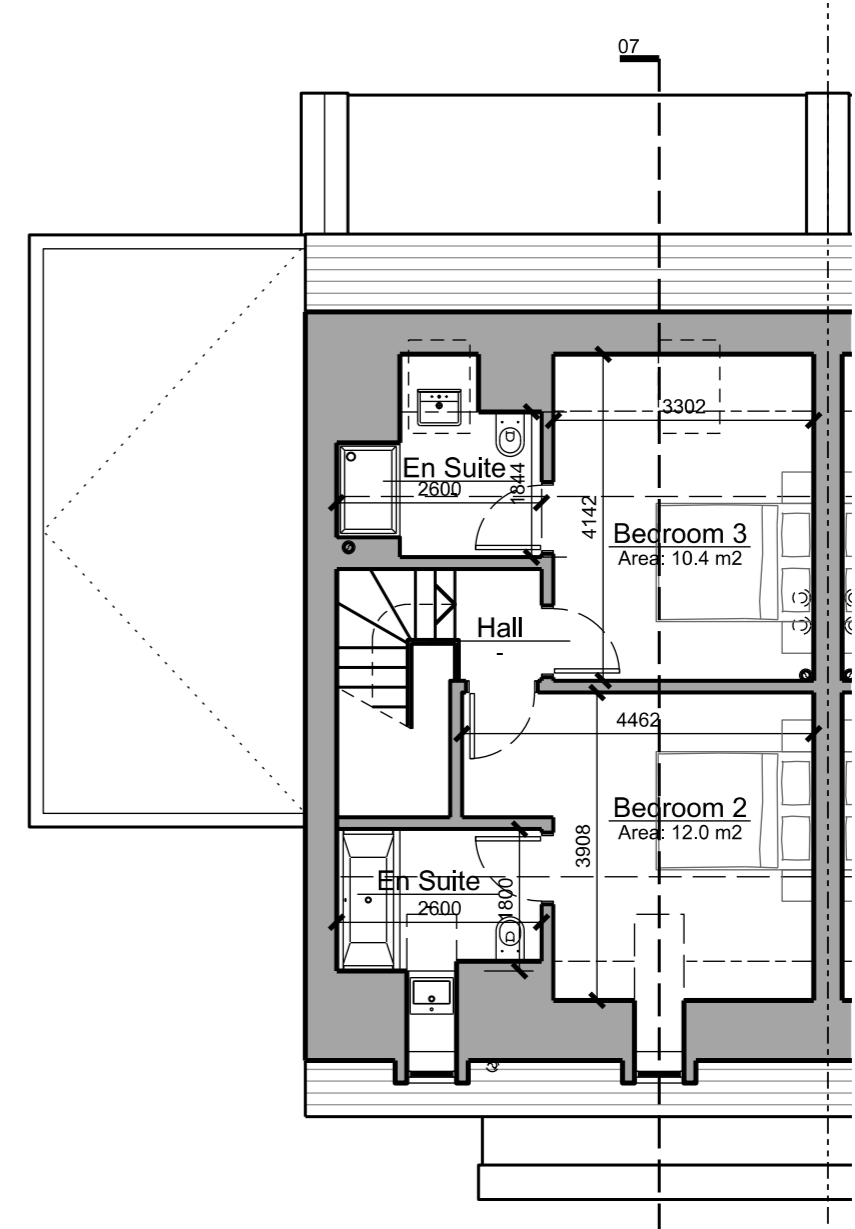
As with all the homes on the Latchmere House site it is designed to Lifetime Homes standard.



Ground Floor Plan



First Floor Plan

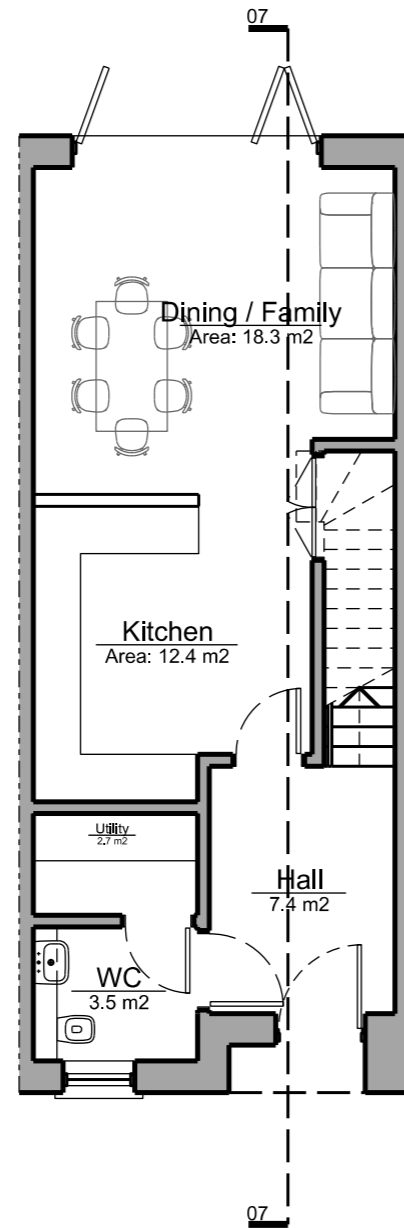


Second Floor Plan

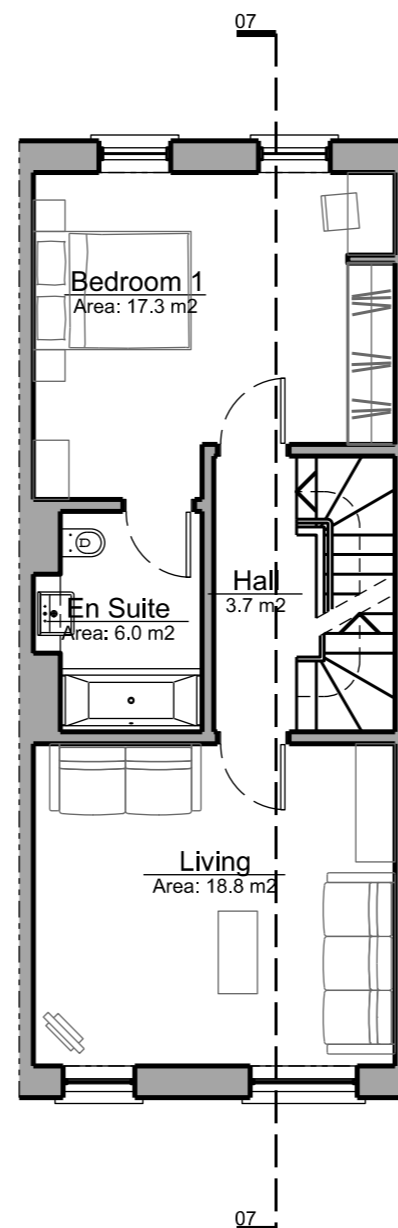
Proposed Floor Plans - House Type D1

House Type D1 is a family home incorporating a kitchen-diner, living room and three bedrooms arranged over three storeys. This is a detached house with a separate garage and on-plot parking.

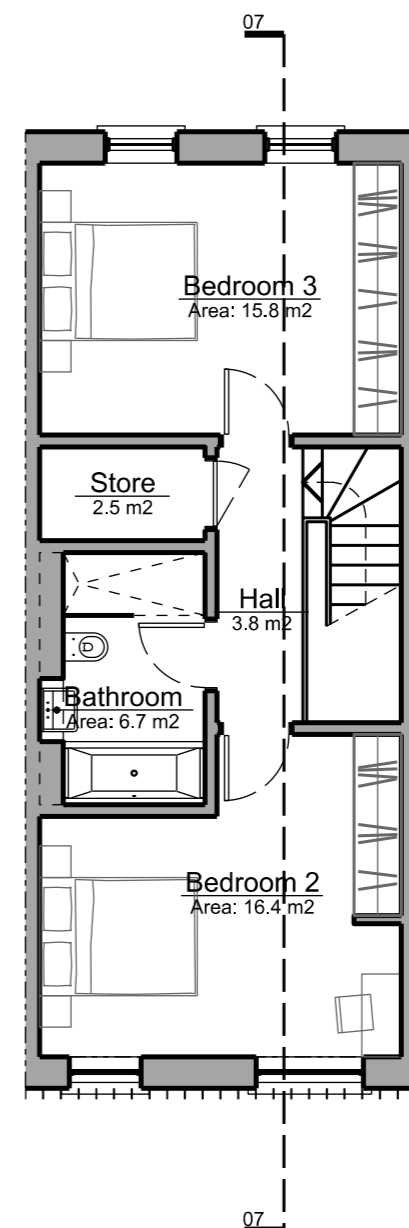
As with all the homes on the Latchmere House site it is designed to Lifetime Homes standard.



Ground Floor Plan



First Floor Plan



Second Floor Plan