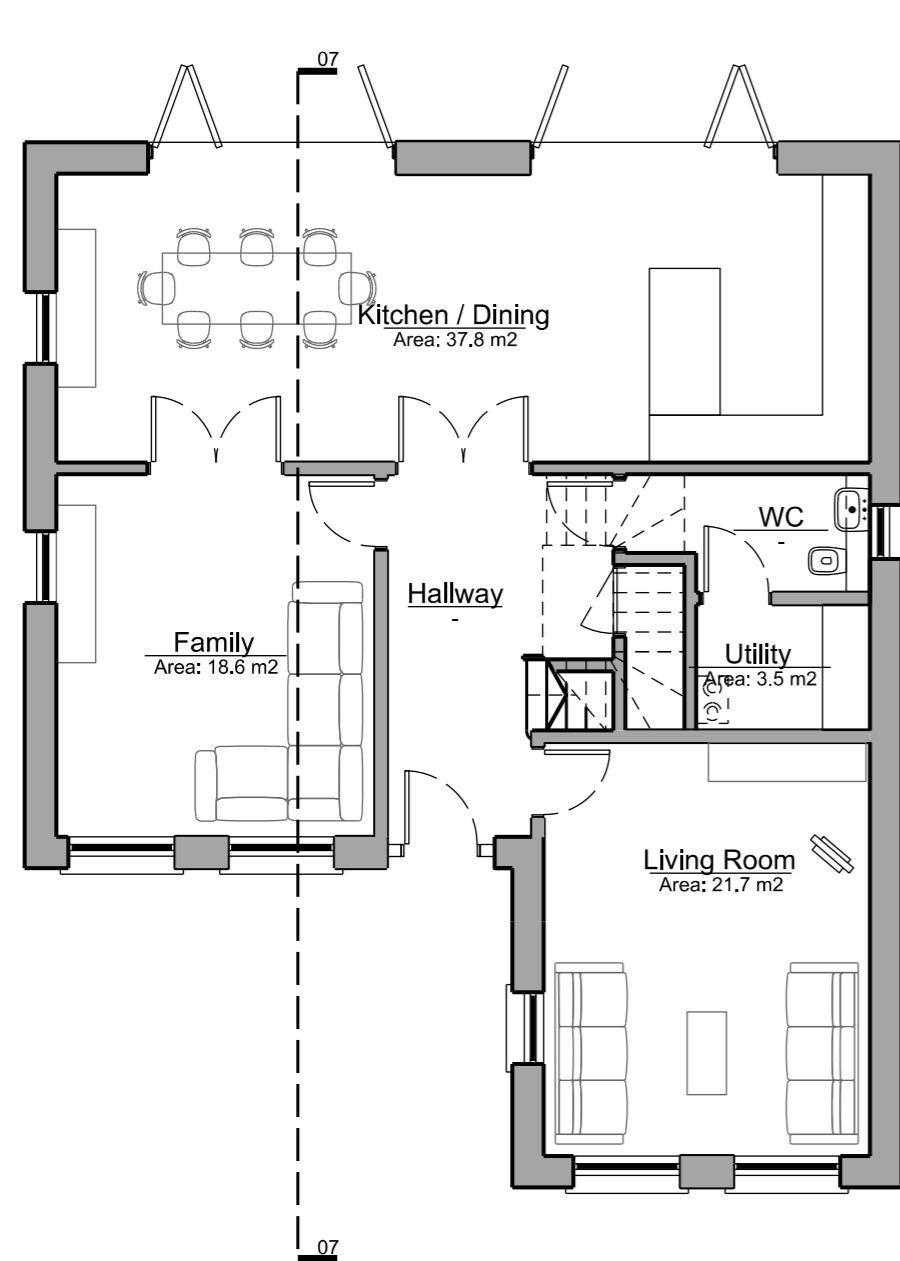


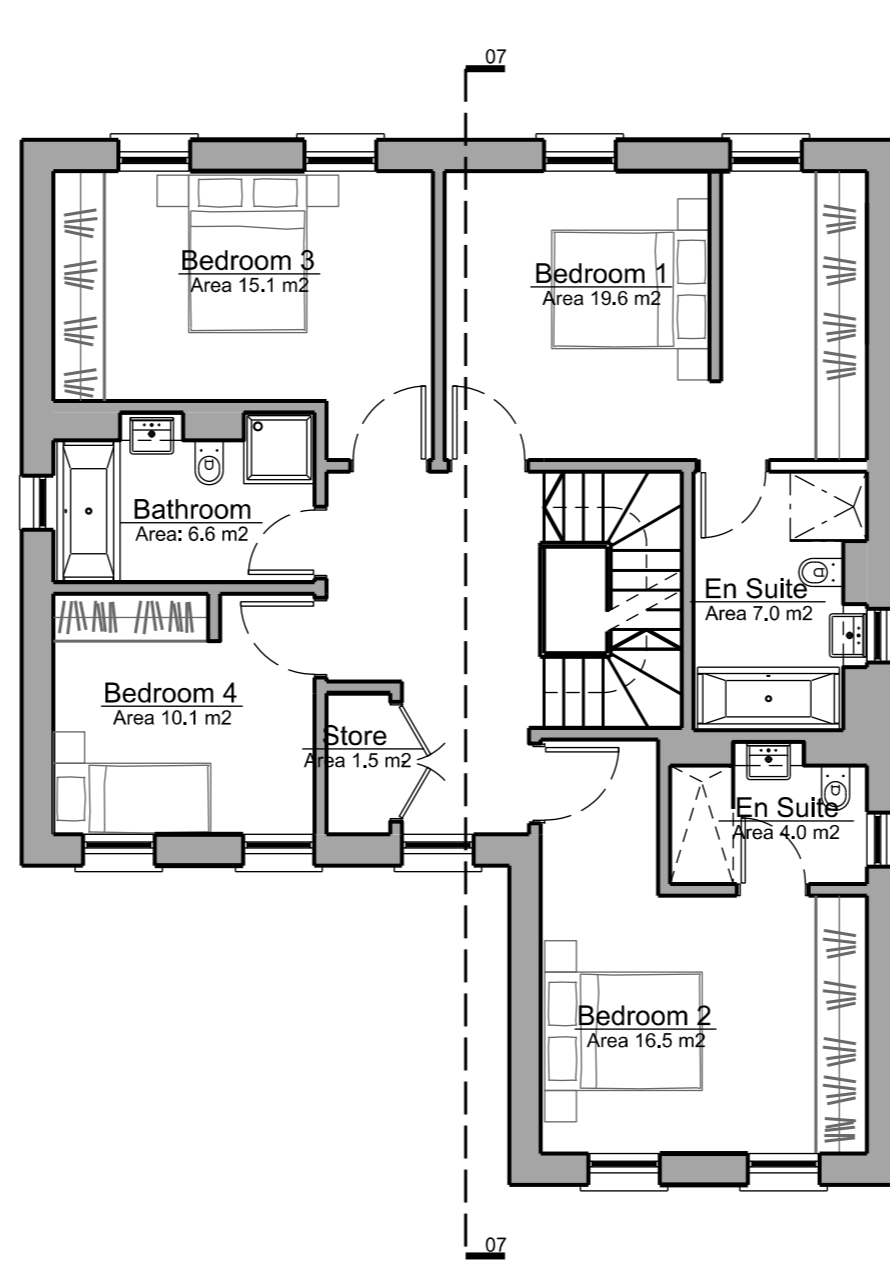
Proposed Floor Plans - House Type F3

House Type F3 is a family home incorporating a kitchen-diner, living room and five bedrooms arranged over two and a half storeys. This is also an individual detached house type and has a separate detached double garage.

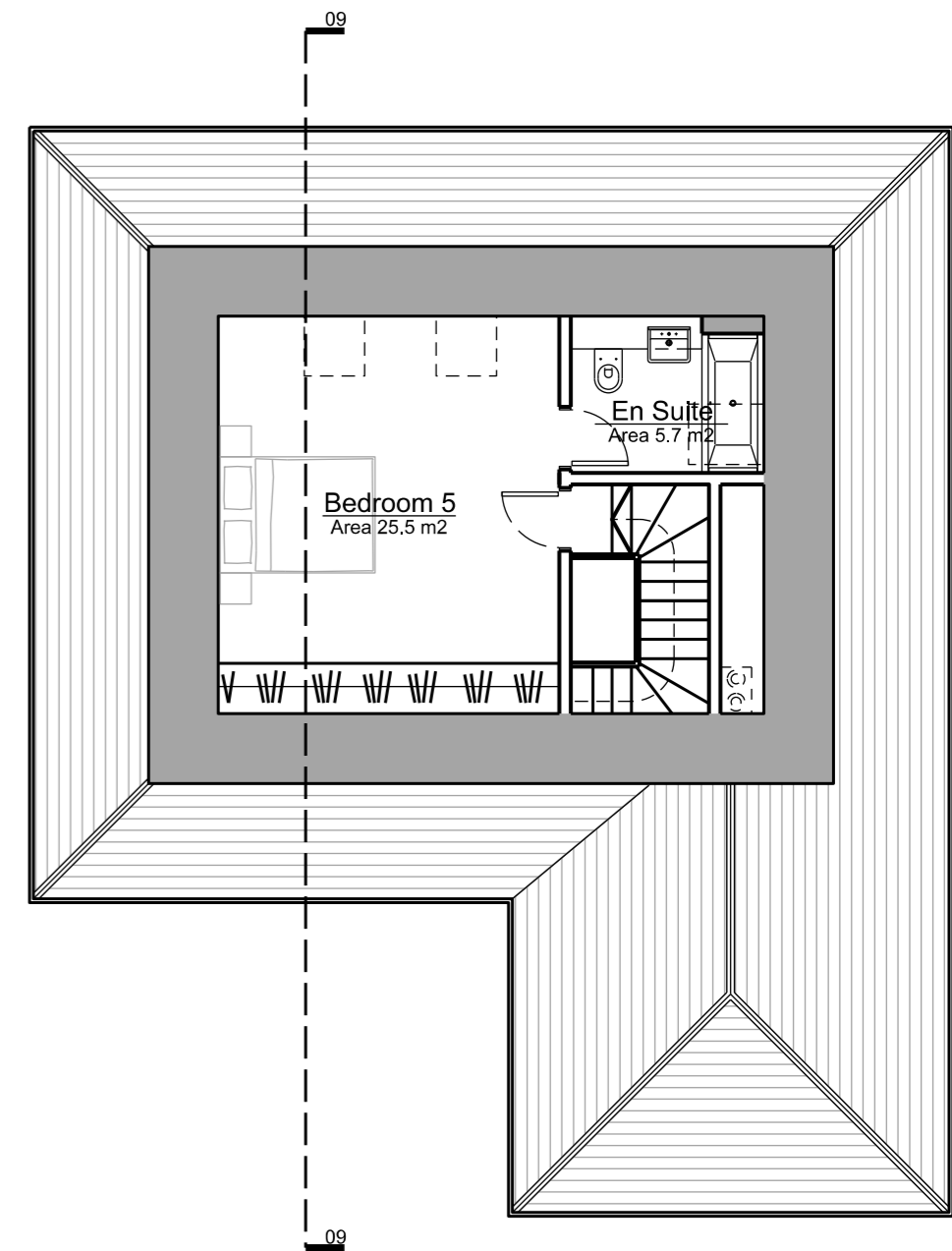
As with all the homes on the Latchmere House site it is designed to Lifetime Homes standard.



Ground Floor Plan



First Floor Plan



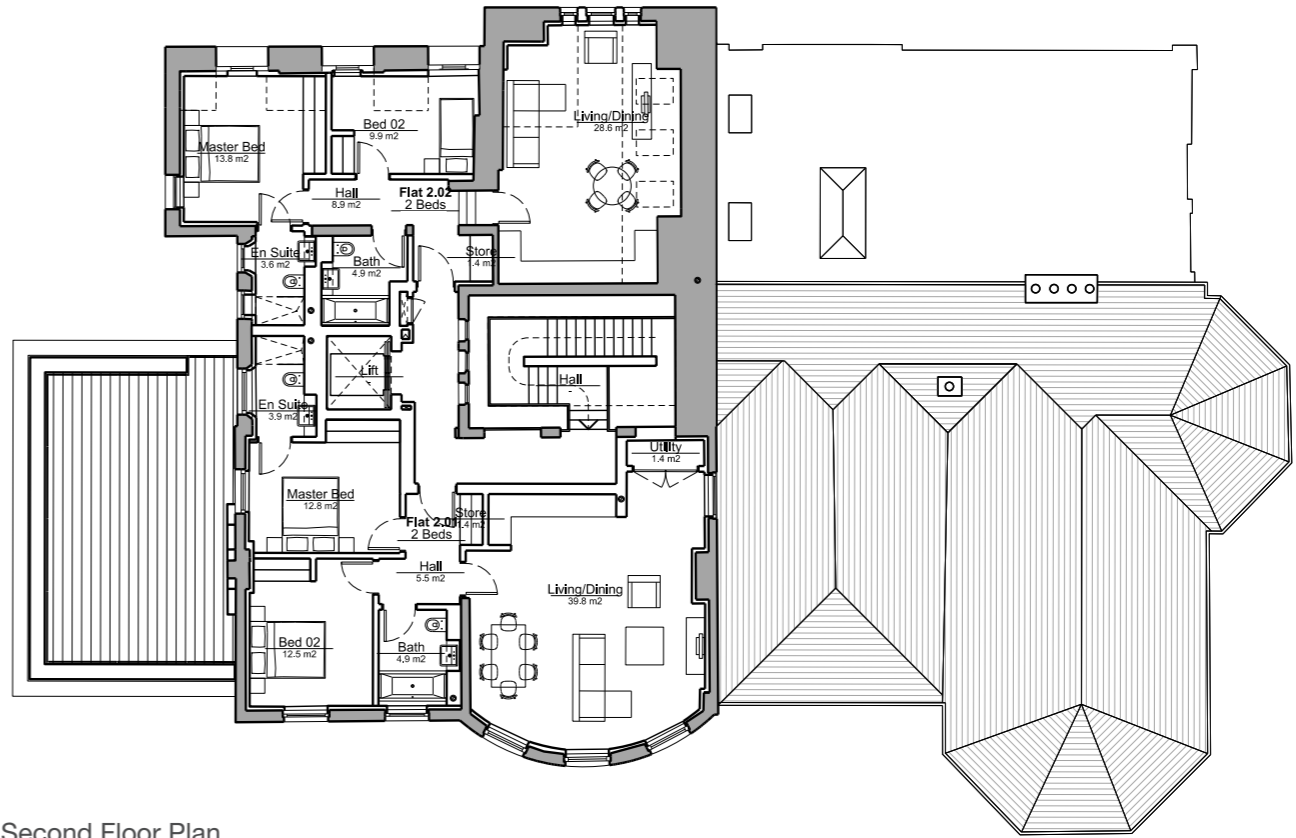
Second Floor Plan

Latchmere House

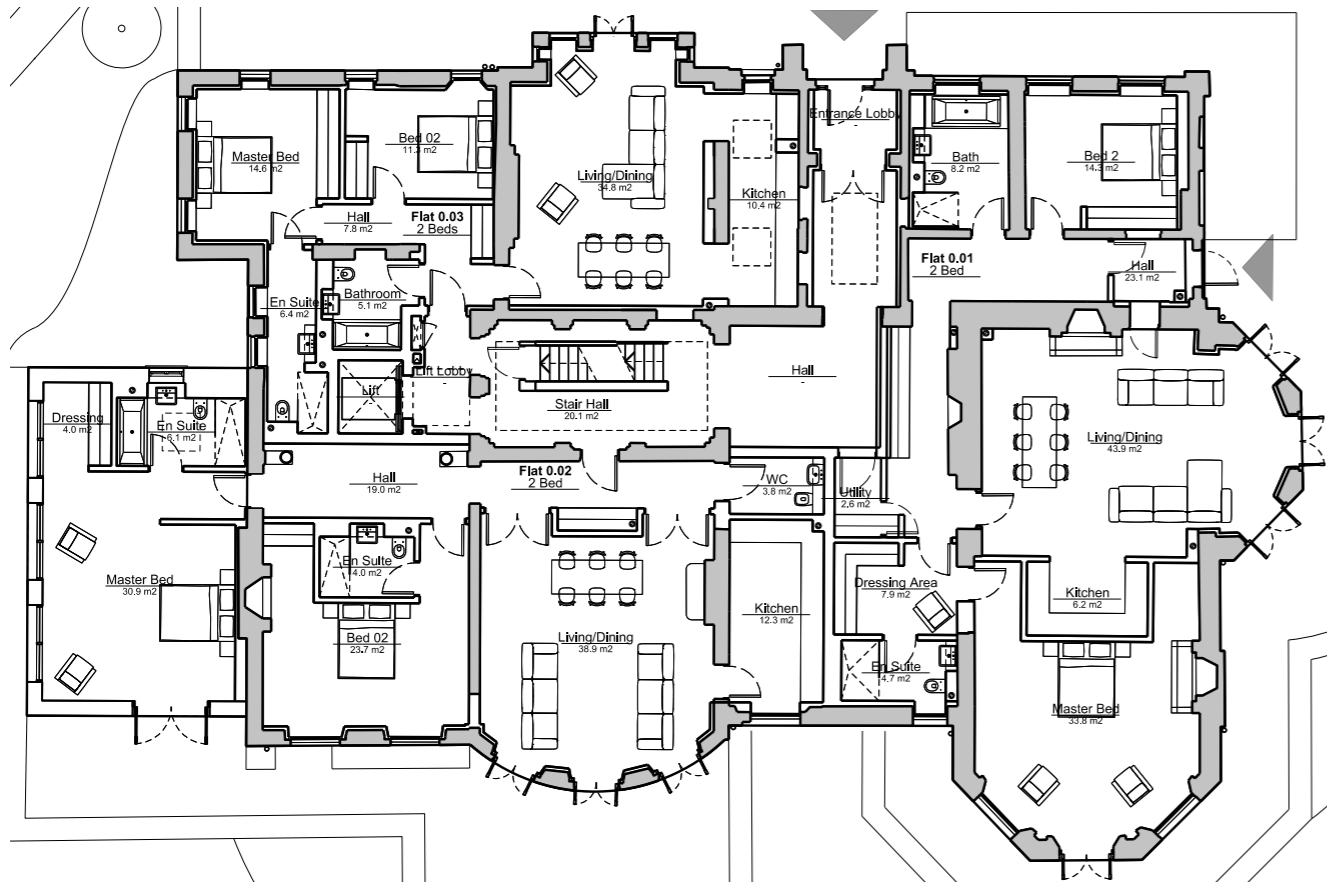
Proposed Floor Plans

Latchmere House contains 5 no. two bed flats and 2 no. three bed flats, arranged over three storeys. At ground floor a new extension to the south west refers back to the long demolished orangery.

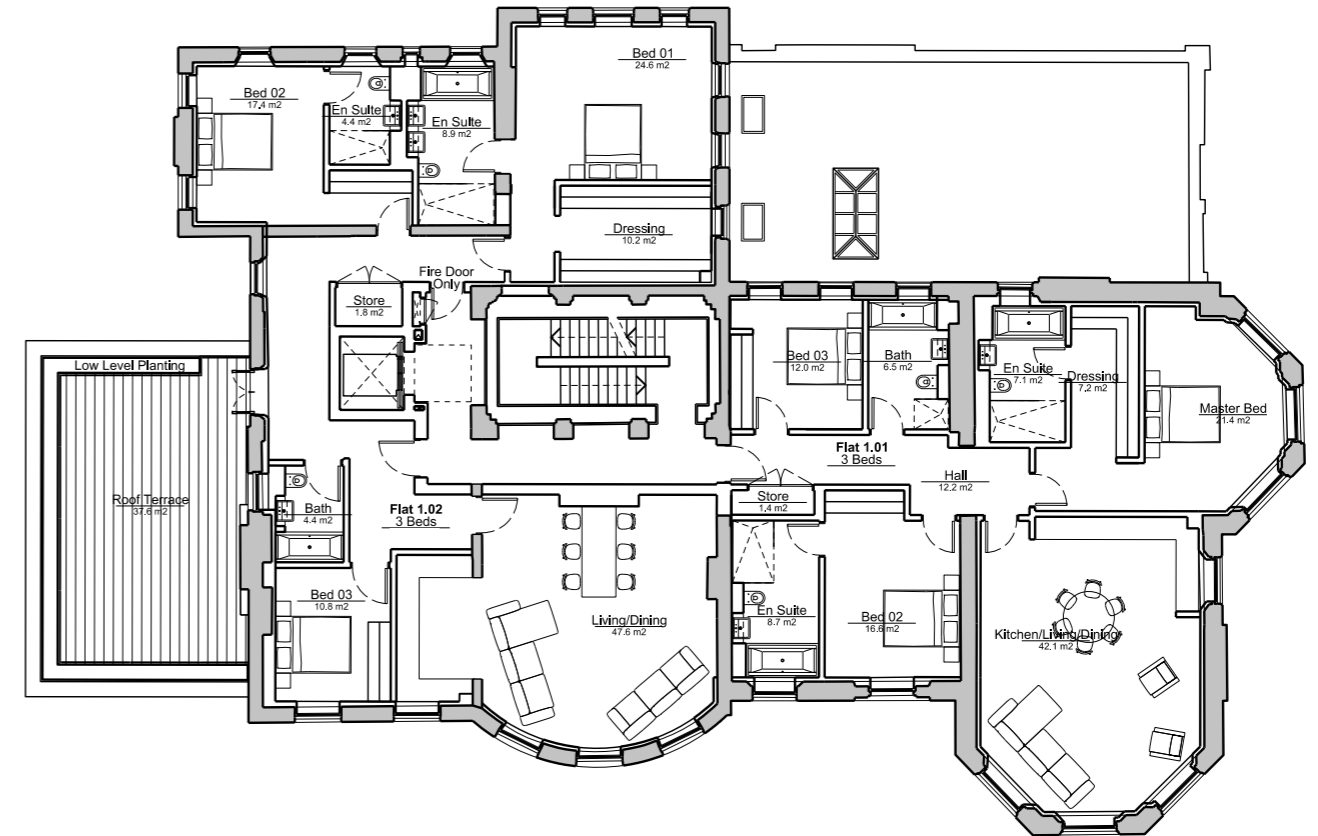
As with all the homes on the Latchmere House site these are designed to Lifetime Homes standard.



Second Floor Plan



Ground Floor Plan



First Floor Plan

Housing Precedent - Local Building Types

As described in earlier chapters there is a great variety of periods and styles of residential property in local area. One consistency is the use of pitched roofs and traditional walling materials of brick and render. There are a number of elegant Georgian and Victorian properties in Ham and Petersham, and it is these that have provided the inspiration for the current proposals. Slate roofs, brick walls and well-proportioned sash windows are our starting point.



Ham Common - New Build



Ham Common - New Build



Ham Common



Ham Common



Ham Common

Appearance

Housing Precedent - Local Building Types



Ham Common



Ham Common



Ham Common



Ham Common



Ham Common



Ham Common

Housing Precedent - Recent Schemes



Kew Riverside



Kew Riverside



Kew Riverside



Richmond Lock, St Margarets



Richmond Lock, St Margarets



Richmond Lock, St Margarets

Appearance

Materials Sample

The proposal uses a range of vernacular details and traditional materials such as flat brick arch lintels, feature brick coursing and parapet details drawn from the London vernacular and local context.



Window detail - Brick flat arch lintel



Slate roof & parapet detail



London Stock Brick - feature brick coursing.



London Stock Brick

Example Elevation - Type A1

The elevations incorporate a palette of high quality materials combined with generously proportioned windows and details such as flat arch brick lintels and feature brick string courses.

