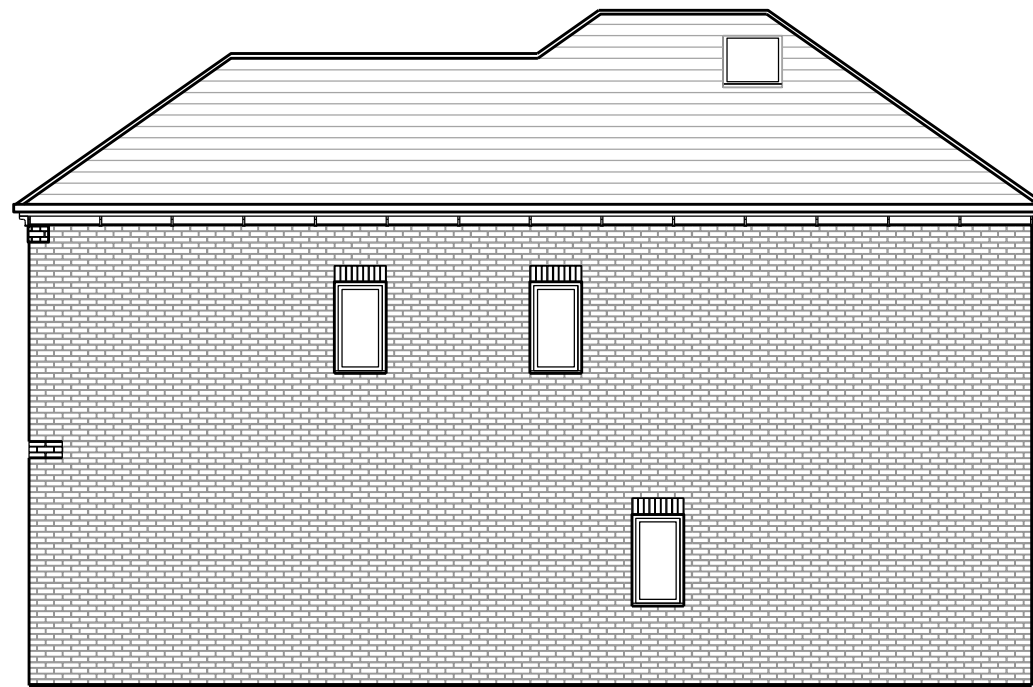


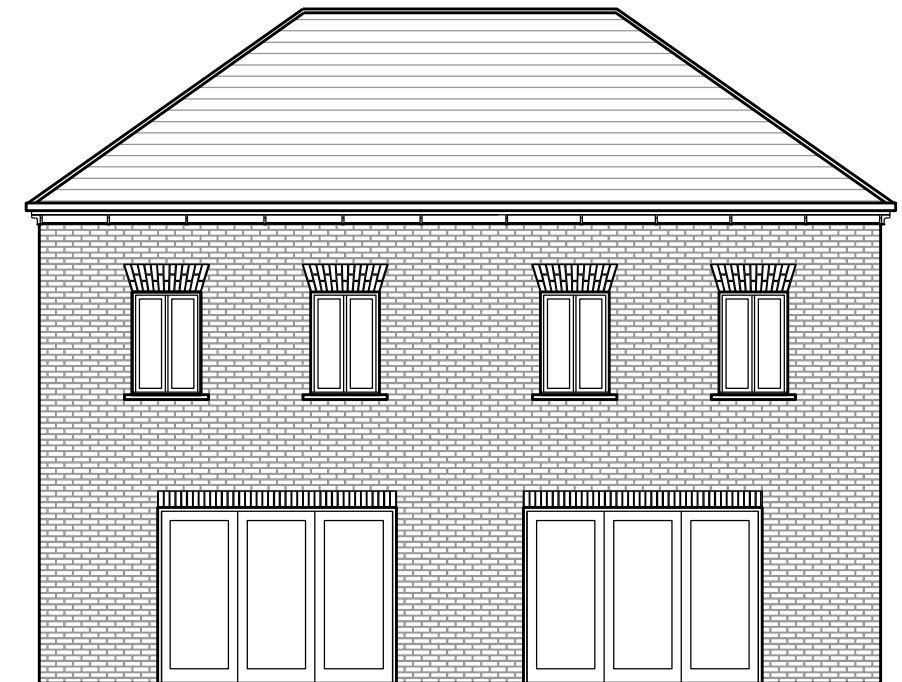
Elevations - House Type F3



Front Elevation
House Type F3



Side Elevation
House Type F3



Rear Elevation
House Type F3

Appearance

Perspectives

View 1

Latchmere House provides the focal point for the avenue and is framed at the eastern end. Front gardens are a mixture of pavers, hedges, low brick walls, trees and soft landscape.



View east along main avenue towards Latchmere House

View 2

The view to Latchmere House from Latchmere Lane is opened up with the removal of the concrete boundary walls. A formal mown lawn recreates the setting of the house, with open parkland on the Latchmere Lane itself. Sensitive separations between public and private are envisaged and outlined in the landscape sections.



View across parkland to south west of Latchmere House

Perspectives

View 3

To the front of Latchmere House significant landscape improvements are proposed including a formal knot garden, water feature and pedestrian paths on axis with the front entrance. This is all described in greater detail in the landscape section. Architecturally the building will be restored, blocked up windows reinstated and PVC windows replaced with timber windows.



View of front of Latchmere House

View 4

The main avenue is lined with trees and maximises the amount of green space to front gardens whilst providing off-street parking. This view has changed in final masterplan to include a focal double fronted house at the termination of the avenue with a feature gable.



View west along main avenue

Appearance

Sketch Perspectives

View 5

Approaching the site from Church Road passing the new village green on the right and mature woodland on the left. The village green is framed to the south by two new terraced houses with landscaped front gardens and entrances doors addressing the street. This terrace completes the framing of the square together with the existing properties on Latchmere Close. A pair of 'gatehouses' frame the view to Latchmere House itself.



View across Latchmere Green towards Latchmere House

View 6

The gatehouses compress the entrance driveway, frame the view to Latchmere House and create a sense of arrival.



View past 'gatehouses' towards Latchmere House