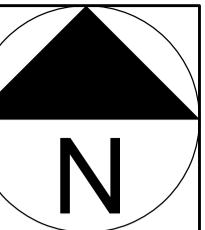


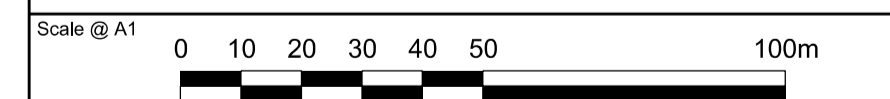


**General Notes:**  
 Do not scale from this drawing. Use marked dimensions.  
 Should any discrepancies be noted, please inform this office.  
 This drawing is copyright of Matthew Alchurch Architects Limited



- Key**
- Application Site Boundary
  - Land within Applicants control
  - - - Borough Boundary

00 Issued for Planning 20/12/13 VW GS  
 Rev: Description: Date Dwn by: Ckd by:



Client:  
**Berkeley Homes (Central London) Ltd**

Project Name:  
**Latchmere House Scheme 1**

Drawing Title:  
**Site Location Plan:  
 Royal Borough of Kingston Upon Thames**

Project No: <b>BKH04</b>	Drawing No: <b>P_002</b>	Revision: <b>00</b>	Scale: <b>1:1250 @ A1</b>	Date: <b>Dec. 2013</b>
Drawn by: <b>VW</b>	Checked by: <b>GS</b>	Drawing Status: <b>Planning</b>		