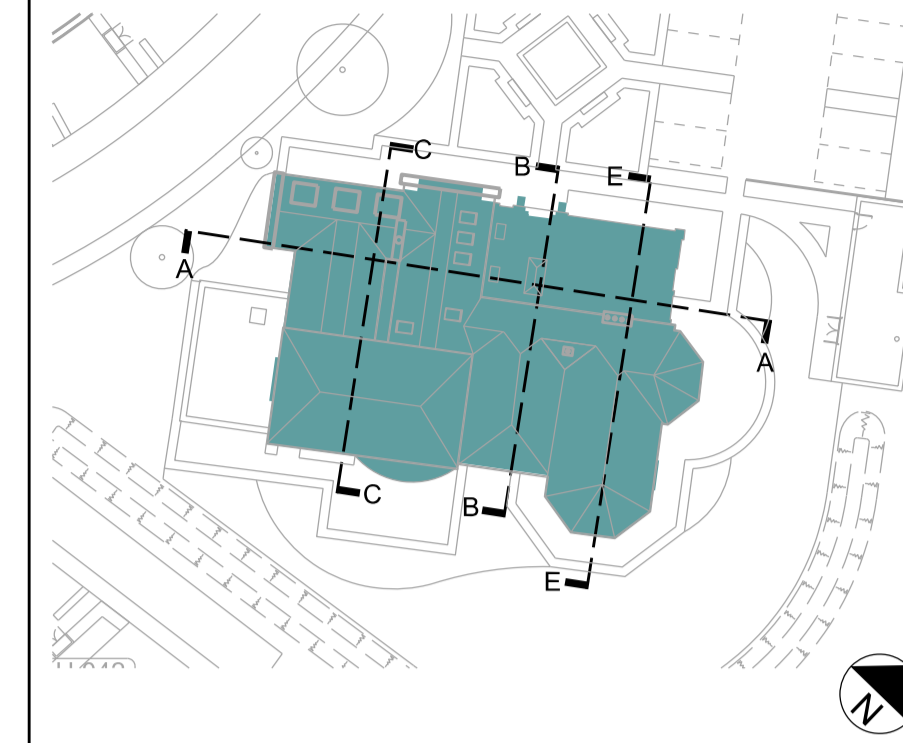


General Notes:

Do not scale from this drawing. Use marked dimensions.
Should any discrepancies be noted, please inform this office.
This drawing is copyright of Matthew Allchurch Architects Limited

Key Plan



Project Note:

The internal layouts within residential apartments, houses and ancillary areas of buildings will be subject to design development.

The precise locations of wall, internal doors, columns, risers and the detailed layouts of bathroom and kitchen areas will be the subject of non-material changes and may vary from the internal layouts set out in these plans.

These minor alterations will not affect the position and arrangements of external doors and windows nor will they affect the relative relationship between habitable rooms and windows.

All materials shown or highlighted are indicative only and may be subject to changes made during the detailed design development.



01 Existing Section A - A
SCALE: 1:100



02 Existing Section B - B
SCALE: 1:100

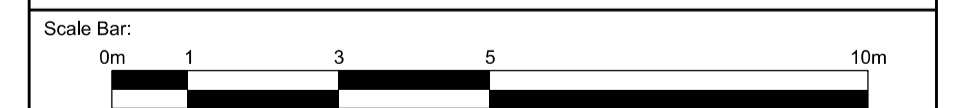


04 Existing Section C - C
SCALE: 1:100



03 Existing Section E - E
SCALE: 1:100

00 Issued for Planning 20/12/13 VW GS
Rev: Description: Date Dm by: Ckd by:



Client:
Berkeley Homes (Central London) Ltd

Project Name:
Latchmere House Scheme 1

Drawing Title:
Latchmere House Existing Sections

Project No:	Drawing No:	Revision:	Scale:	Date:
BKH04	P_017	00	1:100 @ A1	Dec. 2013
Drawn by:	Checked by:	Drawing Status:		
ET	GS	Planning		