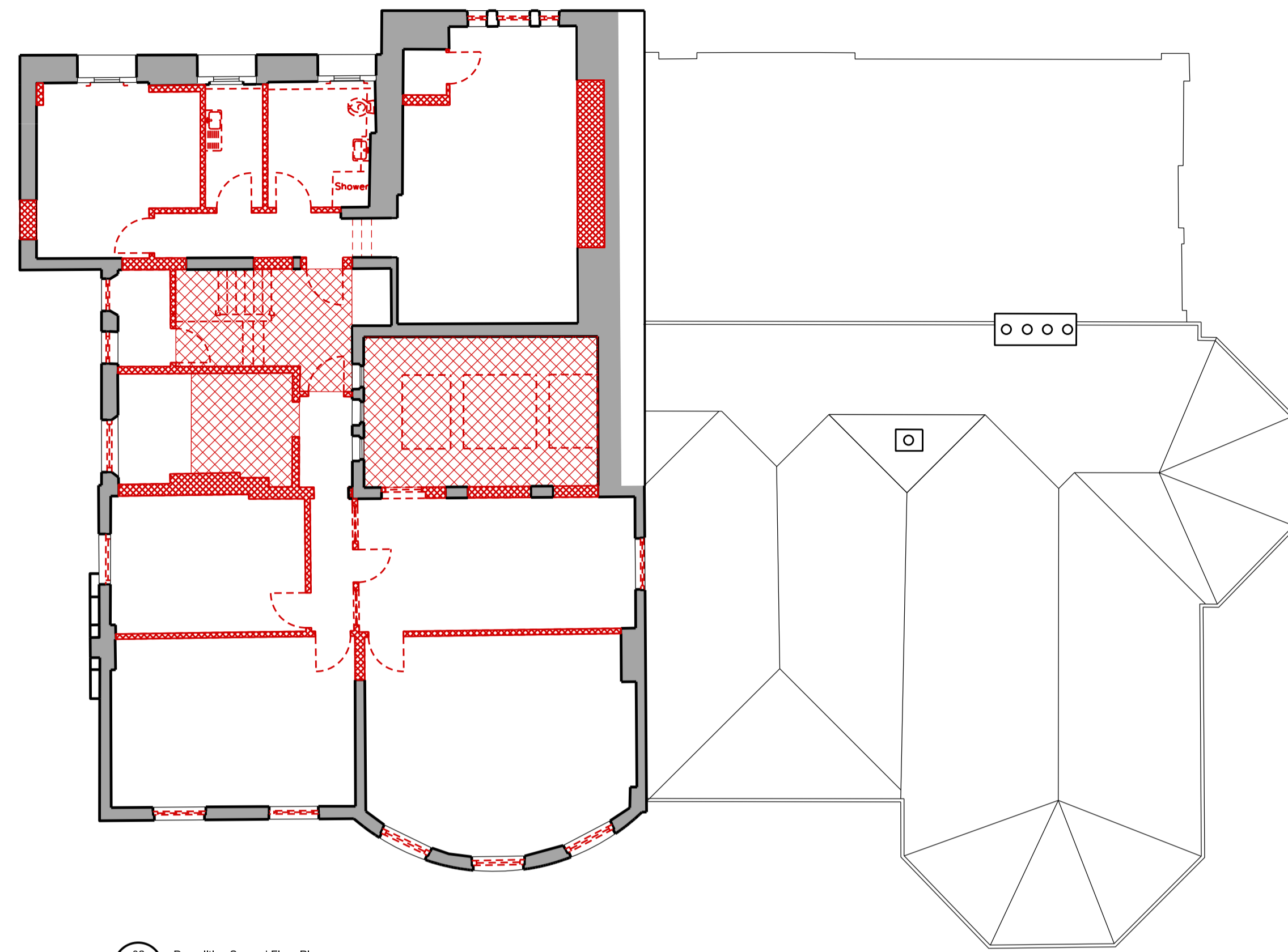
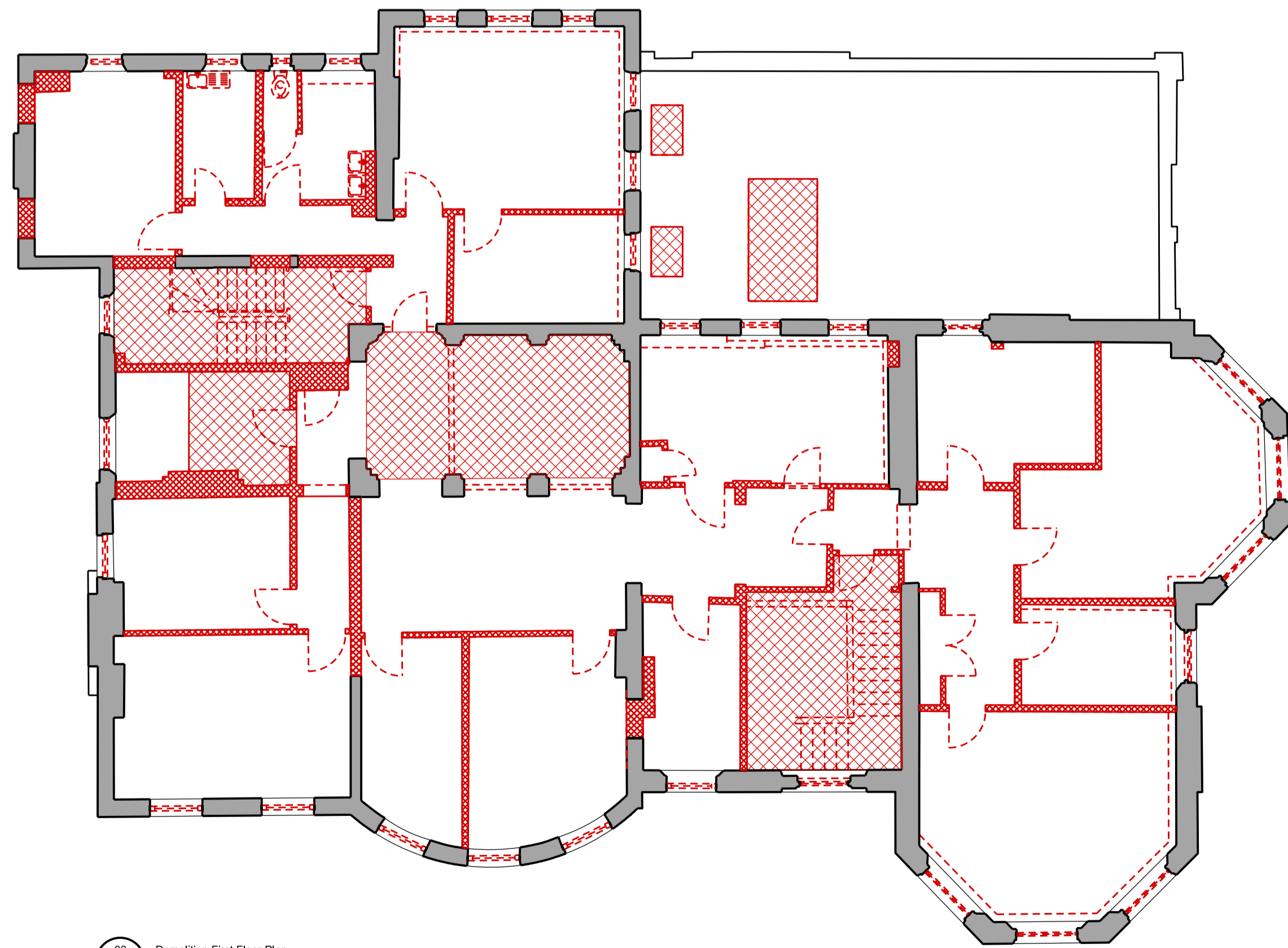


01 Demolition Ground Floor Plan
WORK_P_01 SCALE: 1:100



02 Demolition Second Floor Plan
WORK_P_02 SCALE: 1:100



03 Demolition First Floor Plan
WORK_P_03 SCALE: 1:100

General Notes:
 Do not scale from this drawing. Use marked dimensions.
 Should any discrepancies be noted, please inform this office.
 This drawing is copyright of Matthew Alchurch Architects Limited

Key Plan

Project Note:
 The internal layouts within residential apartments, houses and ancillary areas of buildings will be subject to design development.
 The precise locations of wall, internal doors, columns, risers and the detailed layouts of bathroom and kitchen areas will be the subject of non-material changes and may vary from the internal layouts set out in these plans.
 These minor alterations will not affect the position and arrangements of external doors and windows nor will they affect the relative relationship between habitable rooms and windows.
 All materials shown or highlighted are indicative only and may be subject to changes made during the detailed design development.

- KEY**
- Vertical Element Demolition
 - Items for Demolition
 - Horizontal Element Demolition
 - Retained Structure
 - Proposed Lift Shaft Location

00 Issued for Planning 20/12/13 VW GS
 Rev: Description: Date Dwn by: Ckd by:

MAA Architects
 the boathouse design studio
 27 ferry road teddington tw11 9nn
 t: 020 8973 0050
 e: info@maa-architects.com
 w: www.maa-architects.com

Scale Bar:
 0m 1 3 5 10m

Client:
Berkeley Homes (Central London) Ltd

Project Name:
Latchmere House Scheme 1

Drawing Title:
**Latchmere House
 Demolition Ground, First, Second Floor Plan**

Project No: BKH04	Drawing No: P_023	Revision: 00	Scale: 1:100 @ A1	Date: Dec. 2013
Drawn by: ET	Checked by: GS	Drawing Status: Planning		