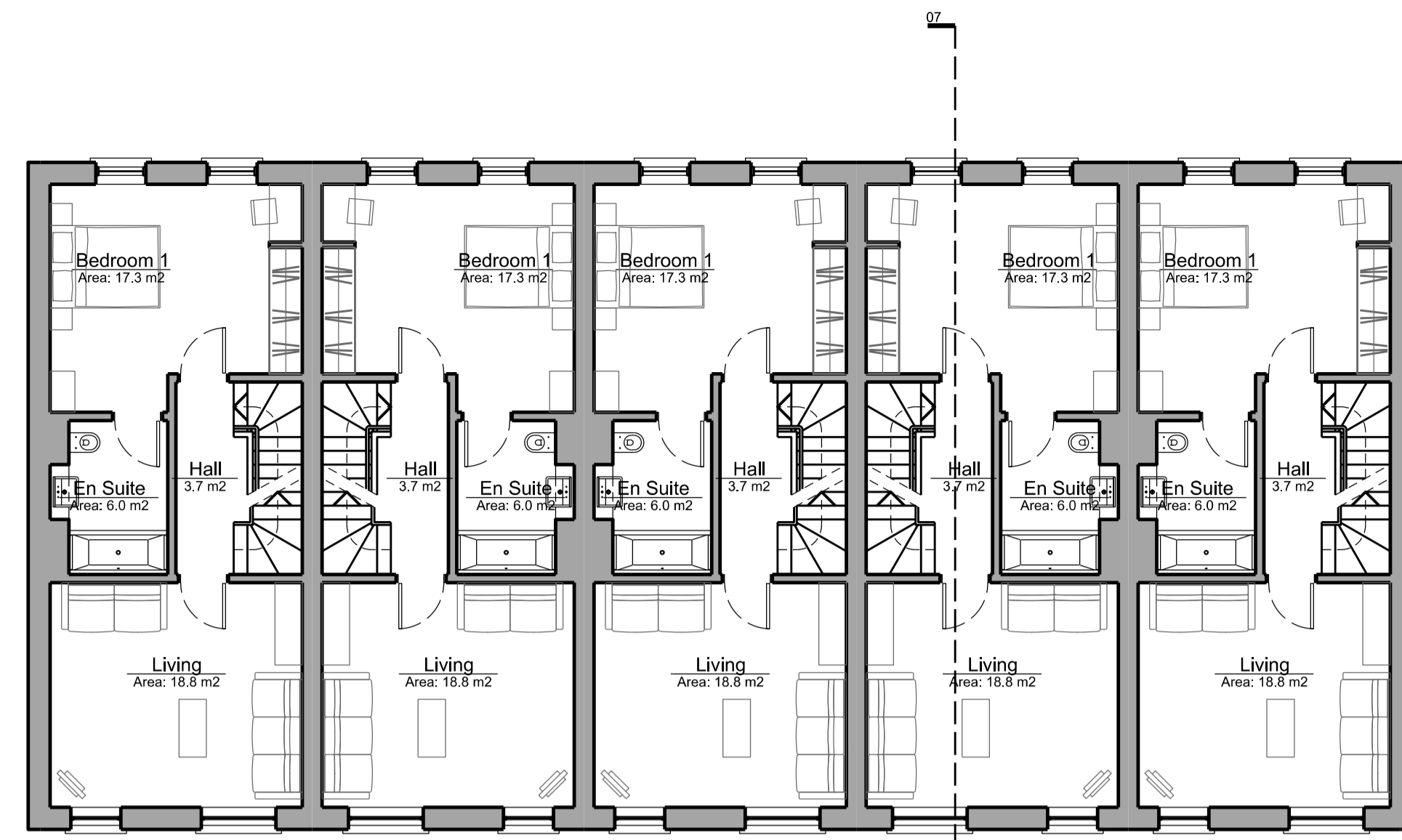
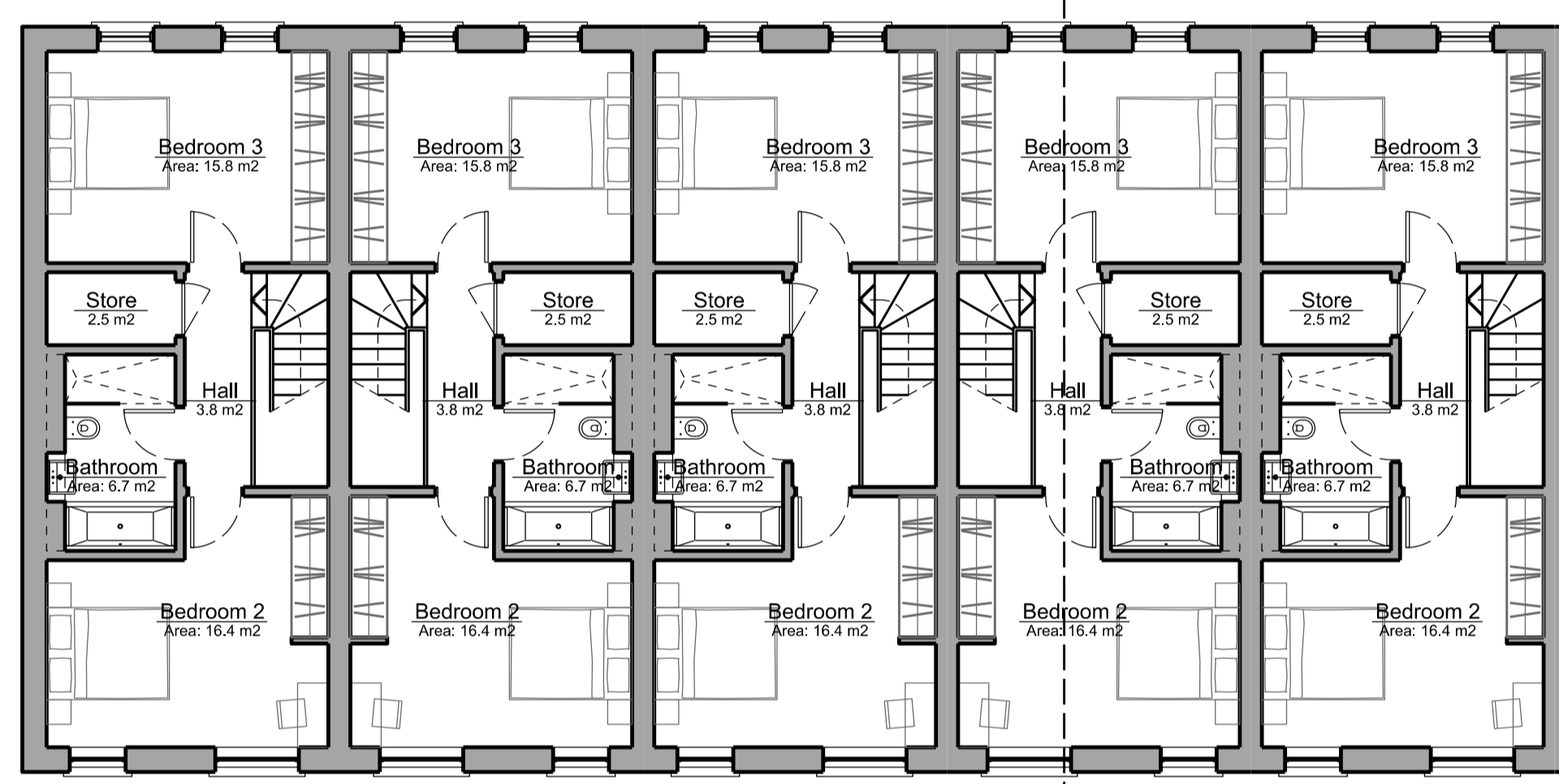


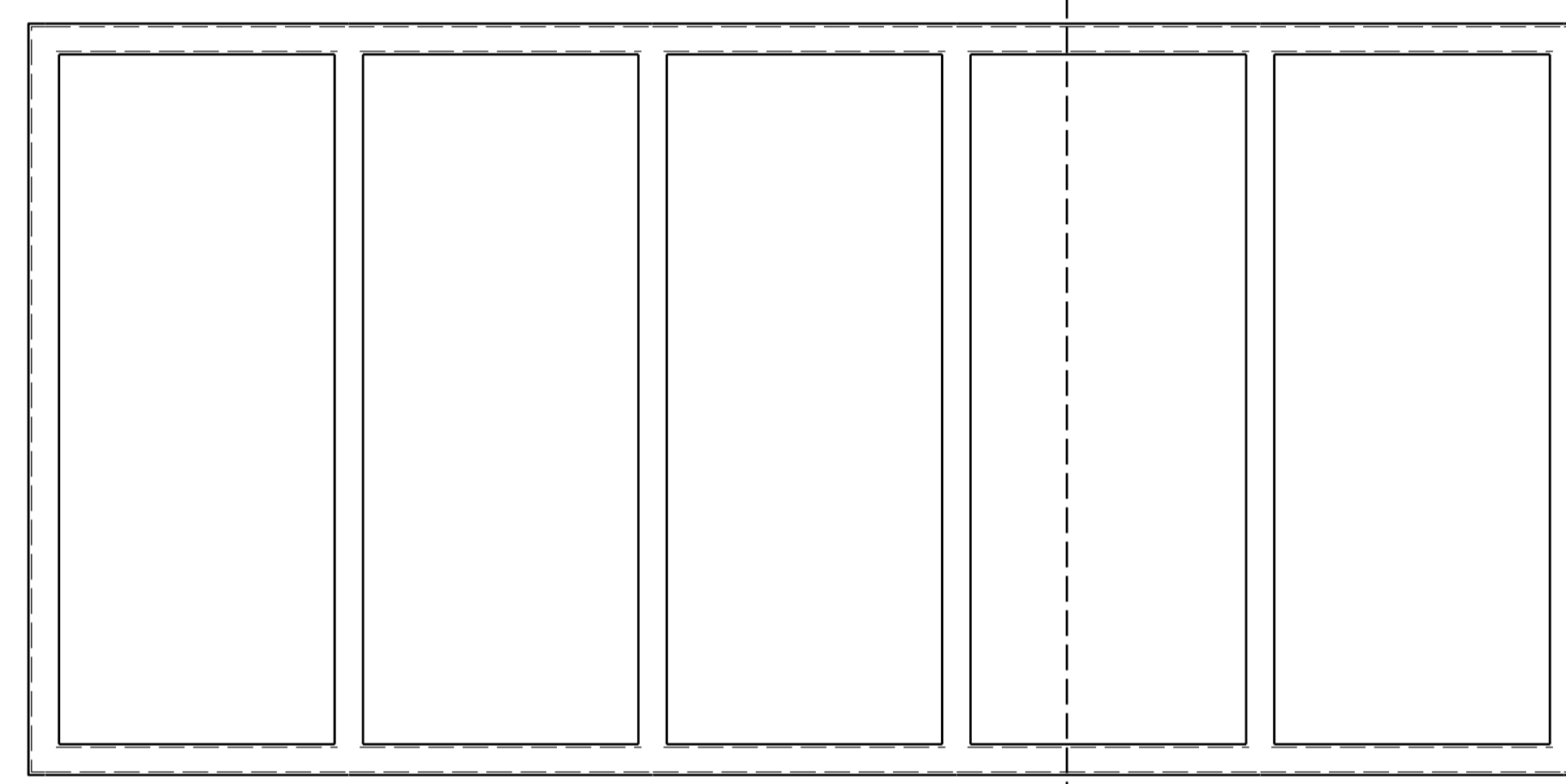
01 Ground Floor Plan
 WKH/P/20 SCALE 1:100



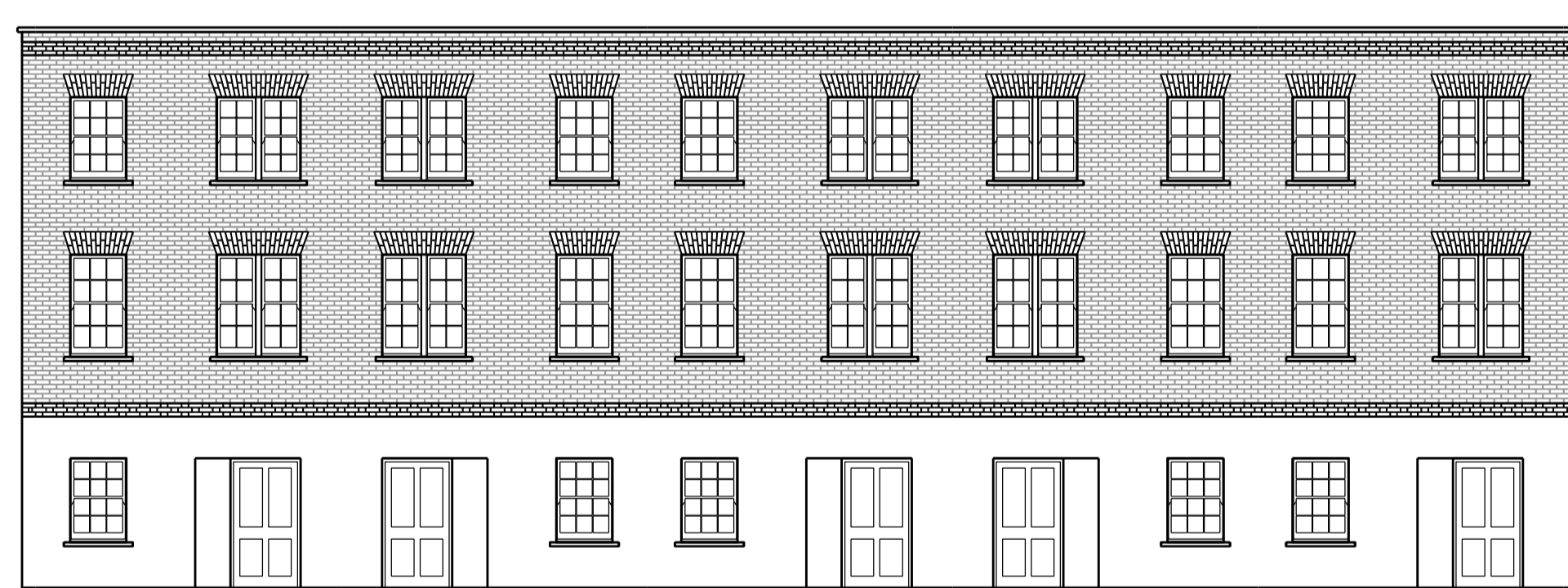
02 First Floor Plan
 WKH/P/20 SCALE 1:100



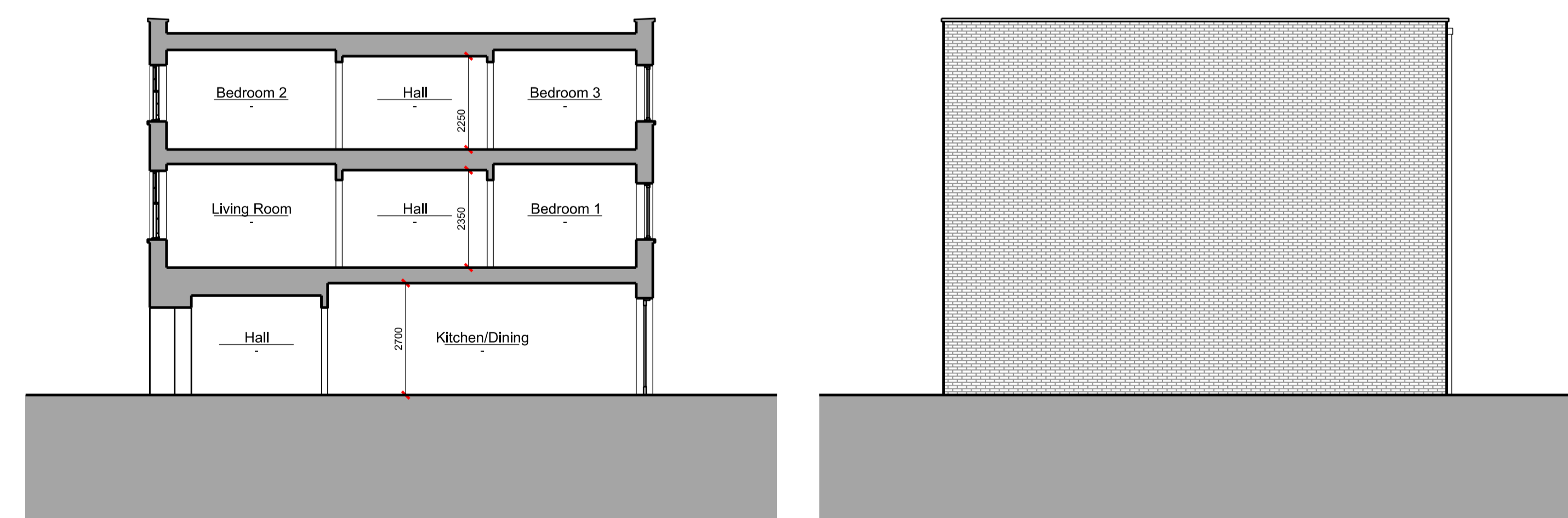
03 Second Floor Plan
 WKH/P/20 SCALE 1:100



04 Roof Plan
 WKH/P/20 SCALE 1:100

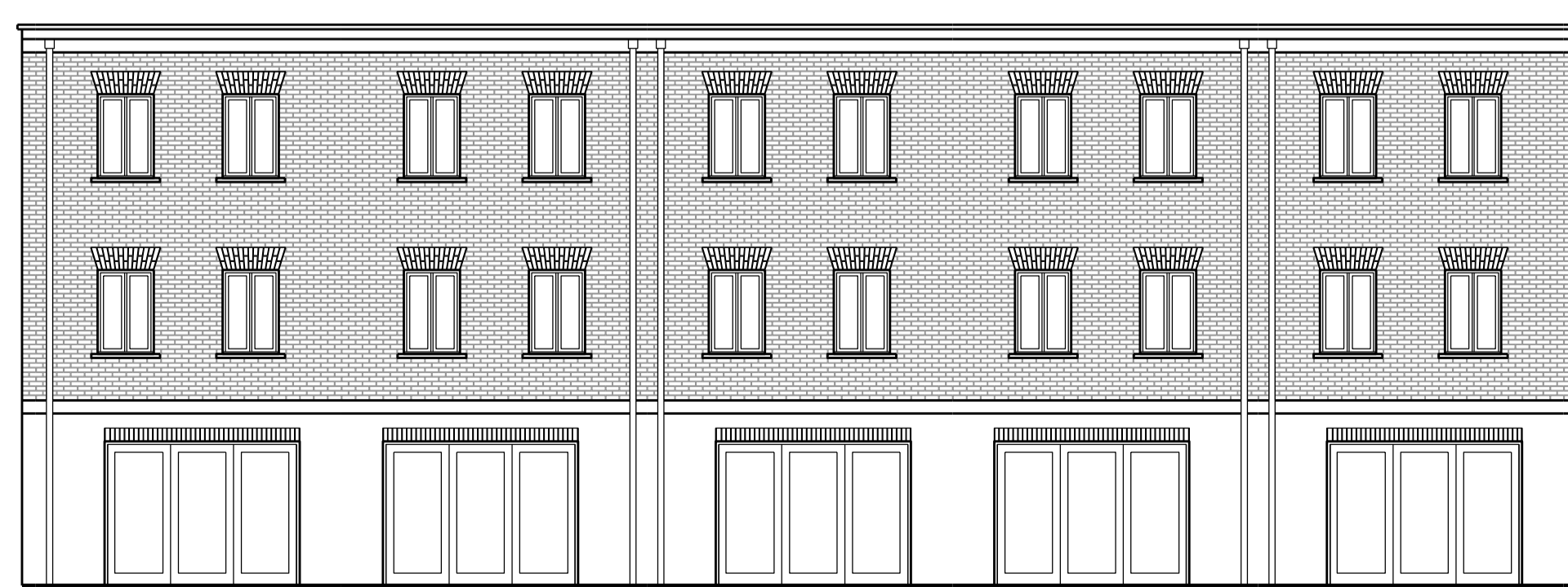


05 Front Elevation
 WKH/P/20 SCALE 1:100



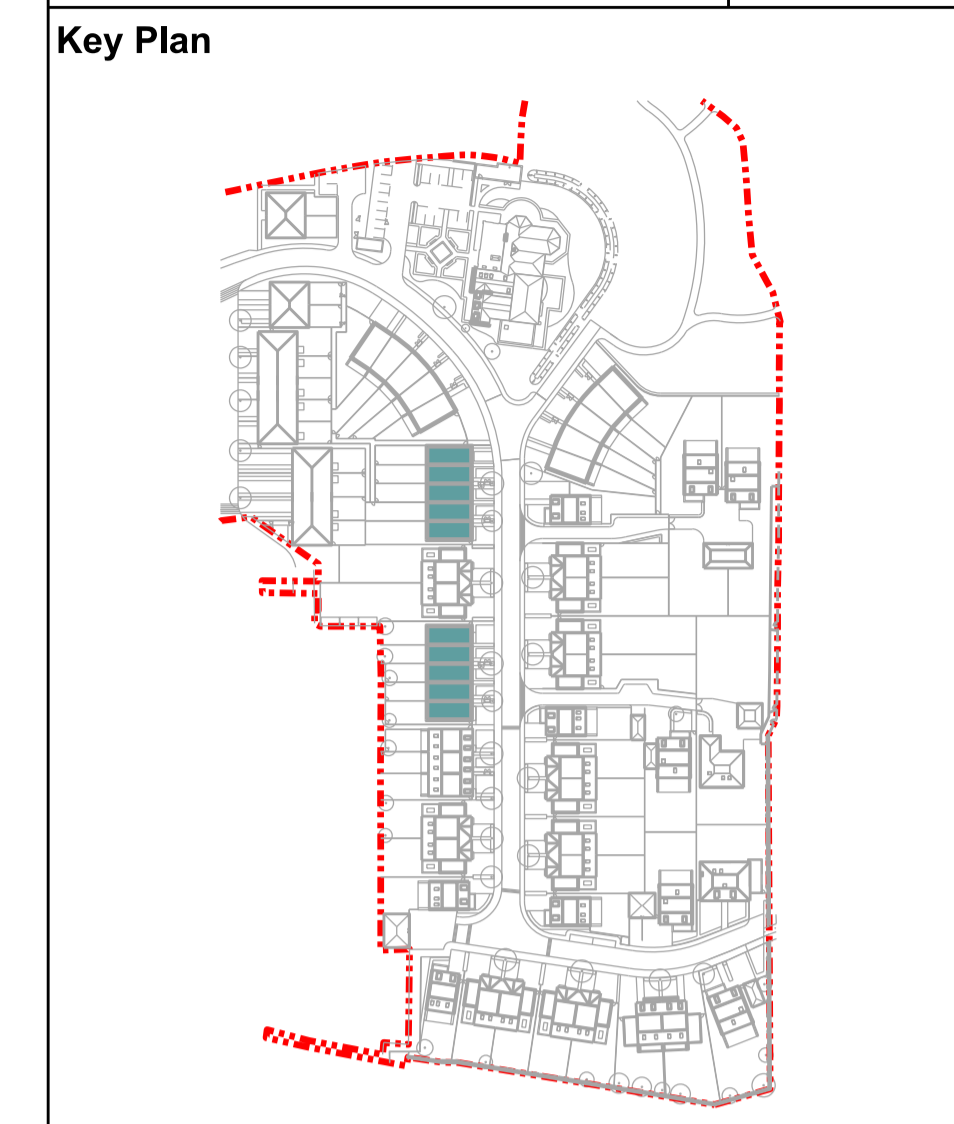
07 Long Section
 WKH/P/20 SCALE 1:100

08 Site Elevation - Identical for both Facades
 WKH/P/20 SCALE 1:100



06 Rear Elevation
 WKH/P/20 SCALE 1:100

General Notes:
 Do not scale from this drawing. Use marked dimensions.
 Should any discrepancies be noted, please inform this office.
 This drawing is copyright of Matthew Allchurch Architects Limited



Project Note:
 The internal layouts within residential apartments, houses and ancillary areas of buildings will be subject to design development.
 The precise locations of wall, internal doors, columns, risers and the detailed layouts of bathroom and kitchen areas will be the subject of non-material changes and may vary from the internal layouts set out in these plans.
 These minor alterations will not affect the position and arrangements of external doors and windows nor will they affect the relative relationship between habitable rooms and windows.
 All materials shown or highlighted are indicative only and may be subject to changes made during the detailed design development.

00 Issued for Planning 20/12/13 VW GS
 Rev: Description: Date Dm by: Ckd by:

MAA Architects
 the boathouse design studio
 27 ferry road teddington tw11 9nn
 t: 020 8973 0050
 e: info@maa-architects.com
 w: www.maa-architects.com

Scale Bar: 0m 1 3 5 10m

Client:
Berkeley Homes (Central London) Ltd

Project Name:
Latchmere House Scheme 1

Drawing Title:
**House Type D1
 Plans, Sections & Elevations**

Project No: BKH04	Drawing No: P_205	Revision: 00	Scale: 1:100 @ A1	Date: Dec. 2013
Drawn by: VW	Checked by: GS	Drawing Status: Planning		