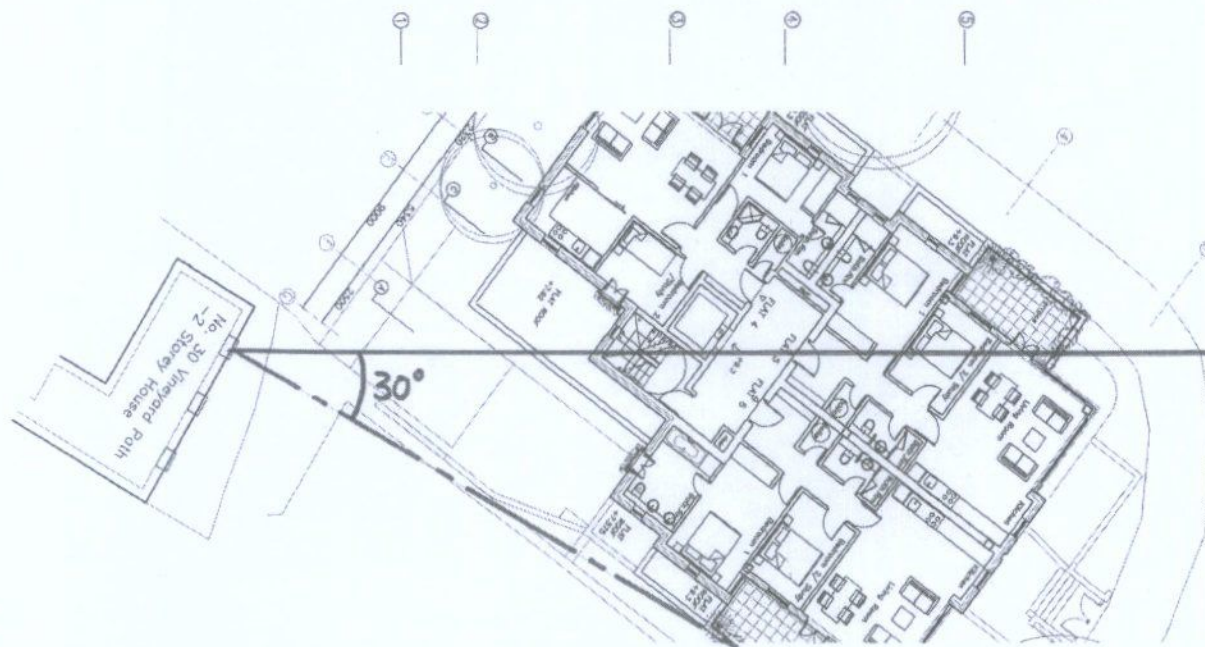


Proposed Section taken at 30 degrees from GF window at 30 Vineyard Path



Proposed extract from first floor plan showing section line taken at 30 degrees from GF window at 30 Vineyard Path

SECTION LINE  
AT 30° TO NO 30  
VINEYARD PATH

job title:  
LANGUARD HOMES 2020 LLP  
Charlie Butler, 40 Mortlake High Street  
drawing:  
Proposed Section @ 30 degrees

Warren Smith Architects Limited 020-8741 1066

scale: 1:200 @ A3 date: JUN 2012

dwg no: 1111 AK [2-]32.9 rev:

