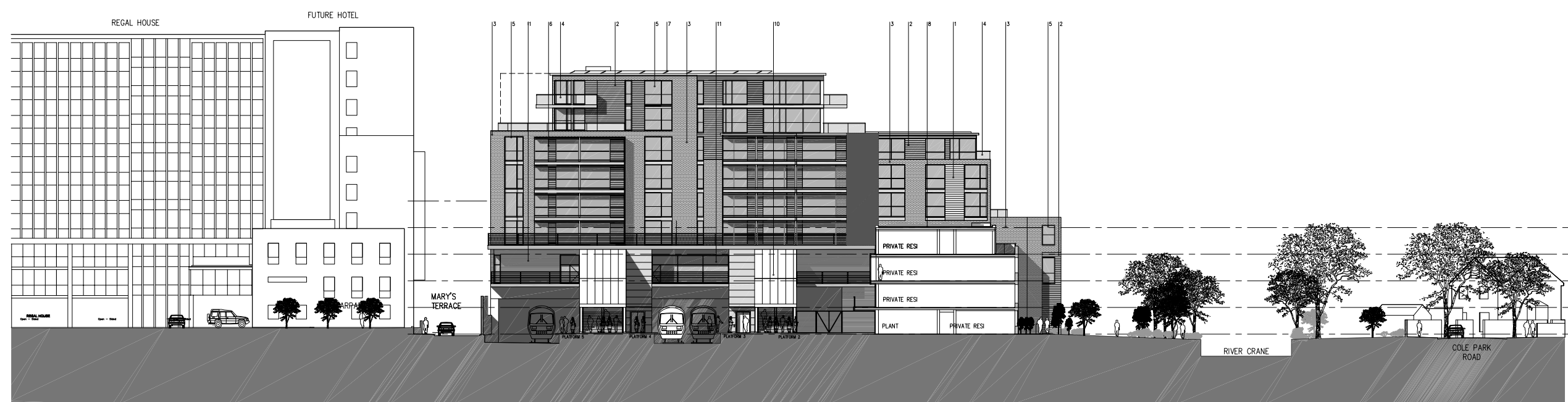
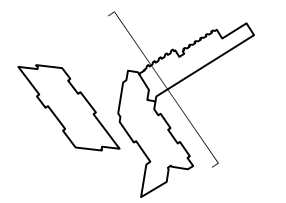


MATERIALS KEY:

1. METAL RAINSCREEN CLADDING 1
2. METAL RAINSCREEN CLADDING 2
3. FACING BRICK
4. METAL BALCONY WITH GLASS & STAINLESS STEEL HANDRAIL
5. METAL AND GLASS CURTAIN WALLING SYSTEM
6. GLAZED WINTER GARDEN
7. SOUTH FACING PHOTOVOLTAIC PANEL TO ROOF
8. GREEN ROOF
9. METAL FLAT PANEL CLADDING
10. METAL STANDING SEAM ROOF
11. METAL FRAME GLAZING SYSTEM
12. FRITTED GLAZED CANOPY
13. STEEL RAILINGS
14. STEEL GATES AND RAILING
15. OPAQUE GLASS CLADDING PANELS
16. METAL LOUVRES
17. SASH WINDOW
18. STUCCO RENDER
19. ART WORK
20. GREEN WALL

NOTES

- 1 The Contractor must check and confirm dimensions
- 2 All discrepancies must be reported and resolved by the Architect before works commence
- 3 This drawing is not to be scaled
- 4 All work and materials to be in accordance with current applicable Statutory Legislation and to comply with all relevant Codes of Practice and British Standards.



FFL + 19.400	P02
FFL + 16.550	P01
FFL + 13.700	P0M
FFL + 10.850	P00
FFL + 8.000	P-01

D	PLANNING AMENDMENTS	13/06/11
C	ISSUED FOR PLANNING	28/04/11
B	ISSUED FOR INFORMATION	21/04/11
A	ISSUED FOR PLANNING	25/02/11

Rolfe Judd

Architecture Planning Interiors
 Old Church Court, Claylands Road, The Oval, London SW8 1NZ
 T 020 7566 1500
 www.rolfe-judd.co.uk

Client



Network Rail & Kier in partnership

Project
**TWICKENHAM STATION
 SCHEME 7**

Drawing
LONG SECTION 1 NORTH SOUTH

Scale	Date	Drawn
1:250(A1) 1:500(A3)	NOV 10	LB
Drawing No	Revision	
4674 / T(20)S02	D	
CAD Ref No		
© \4674\T_Series\Scheme 7\T20\T(20)S02		
© Copyright Rolfe Judd Ltd		

This scale is 100mm in length when printed of the size indicated in the title block.