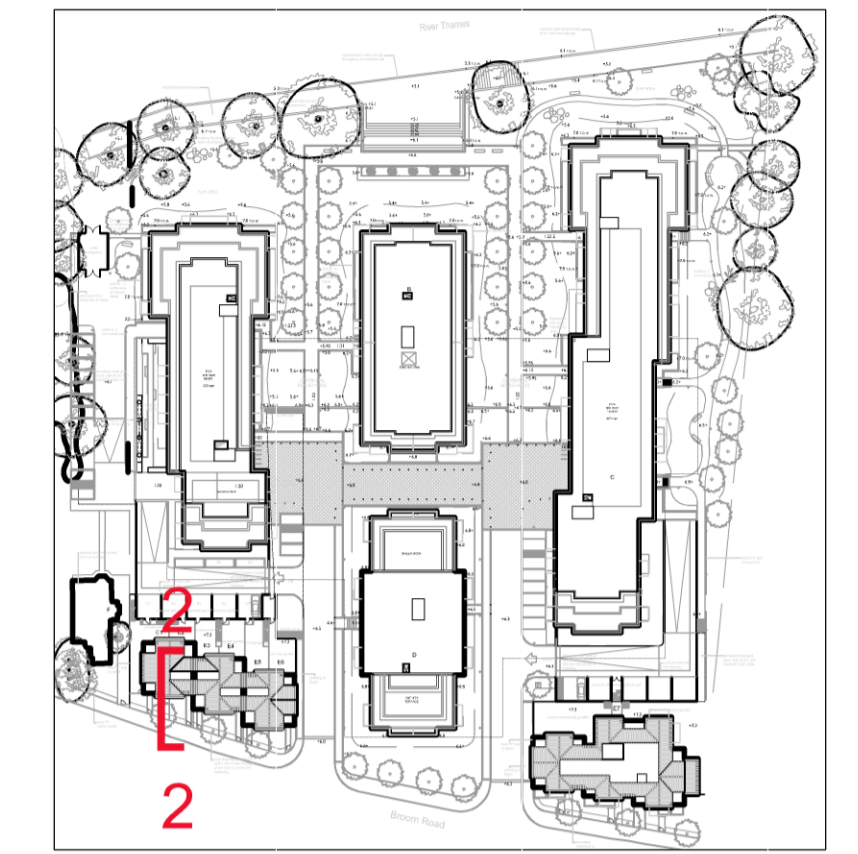
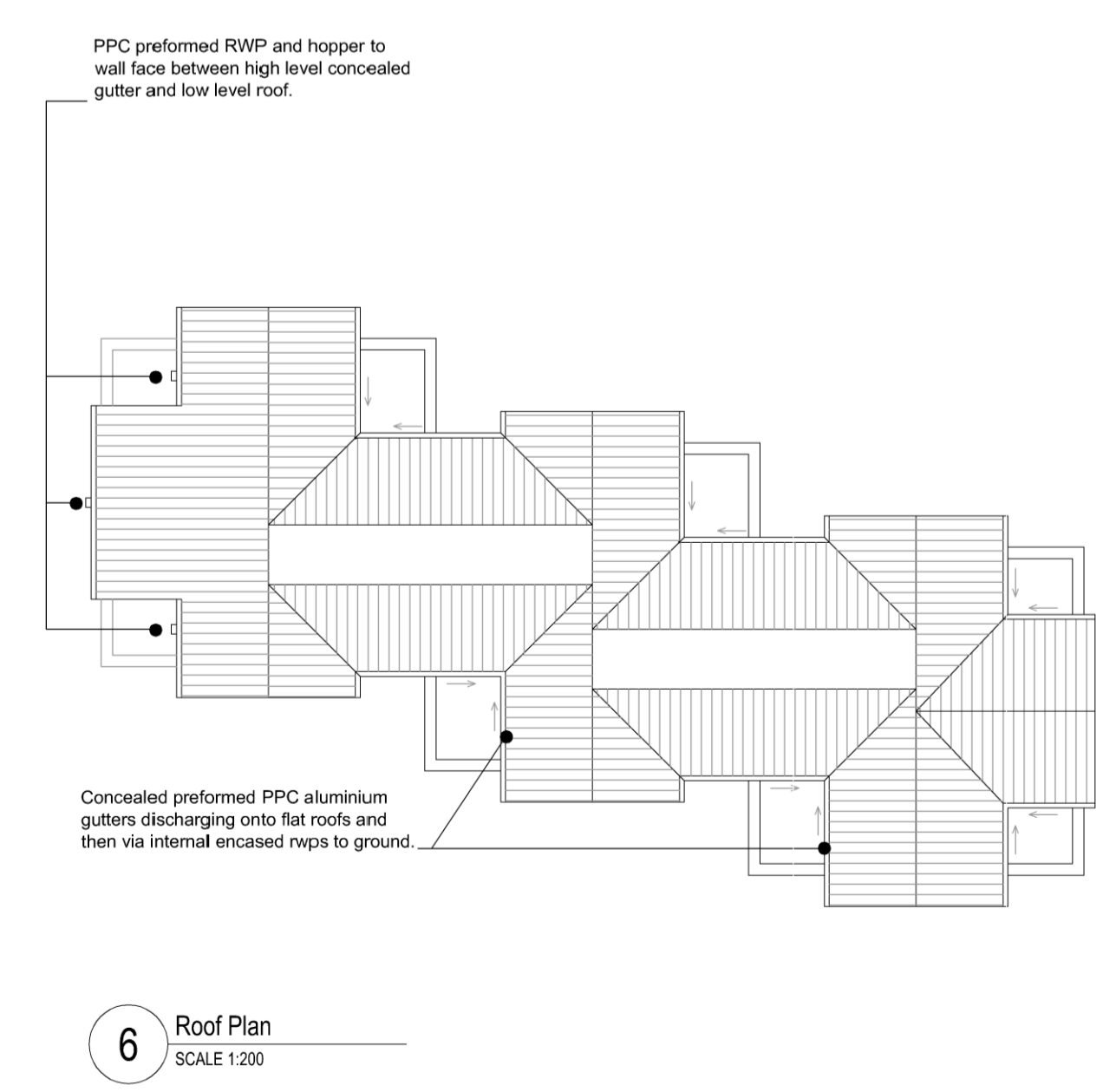
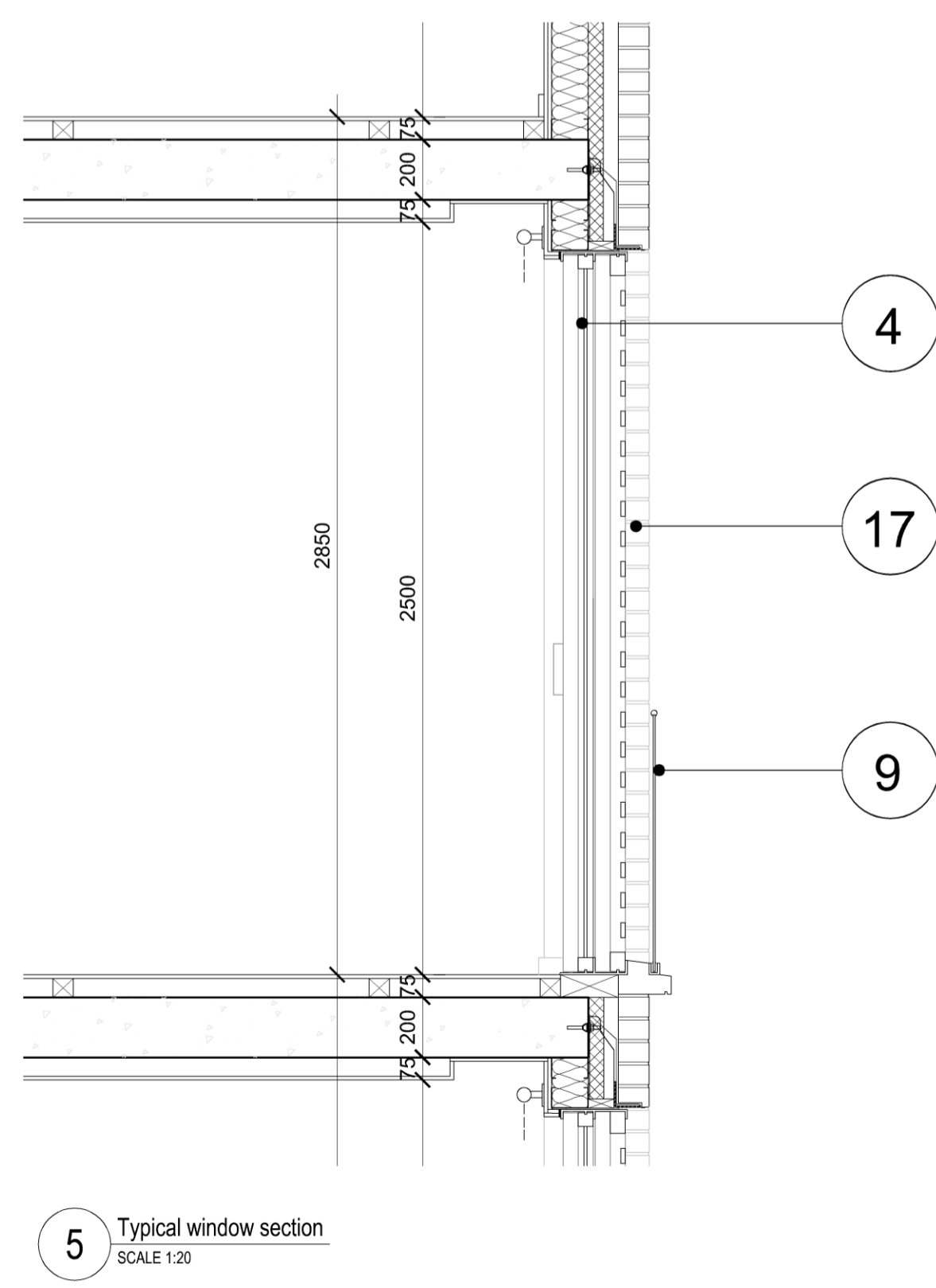
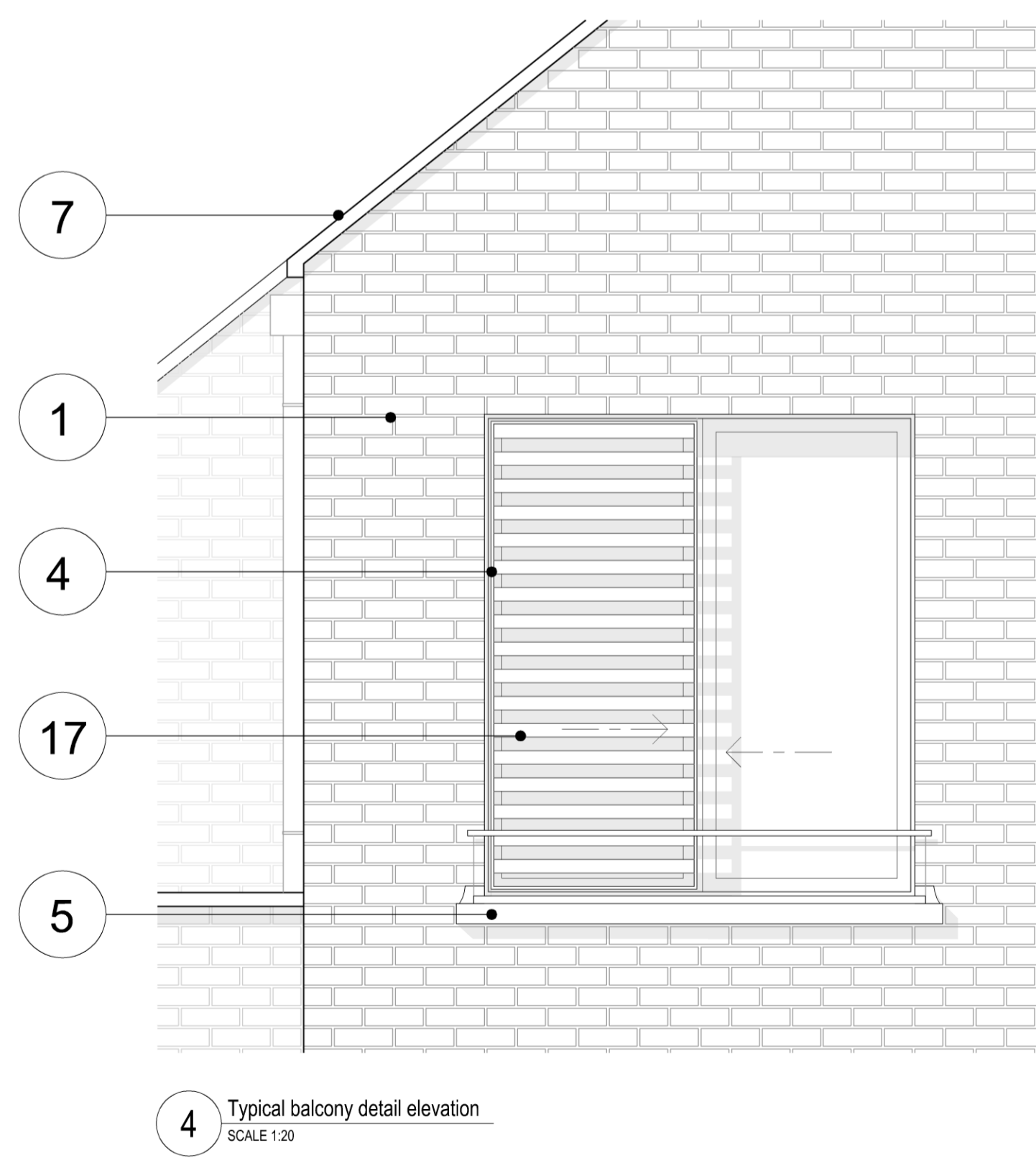
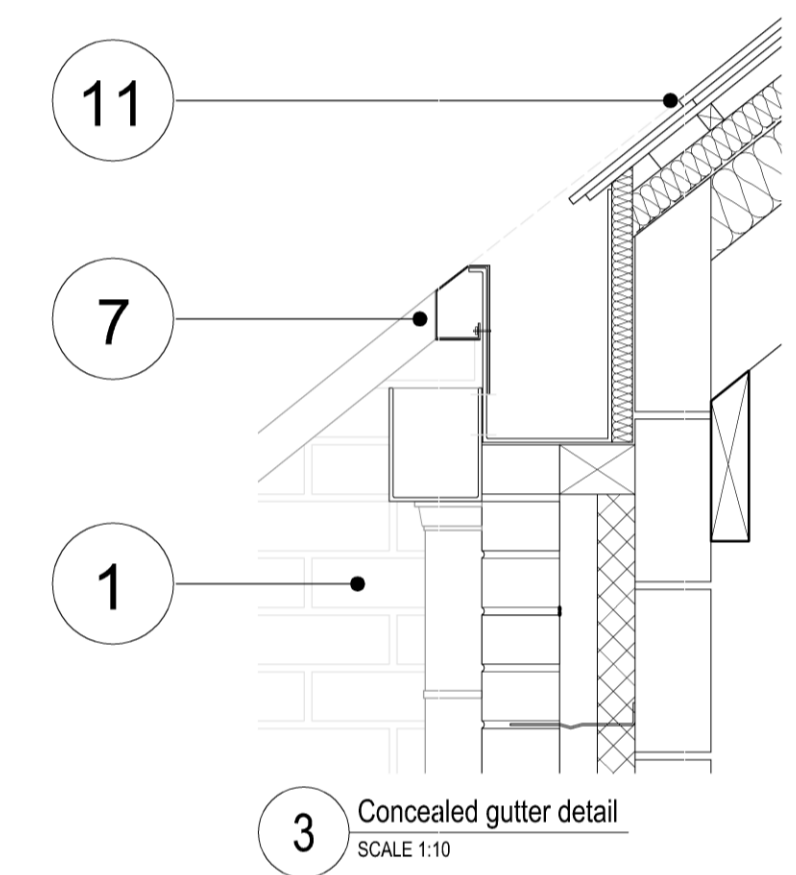
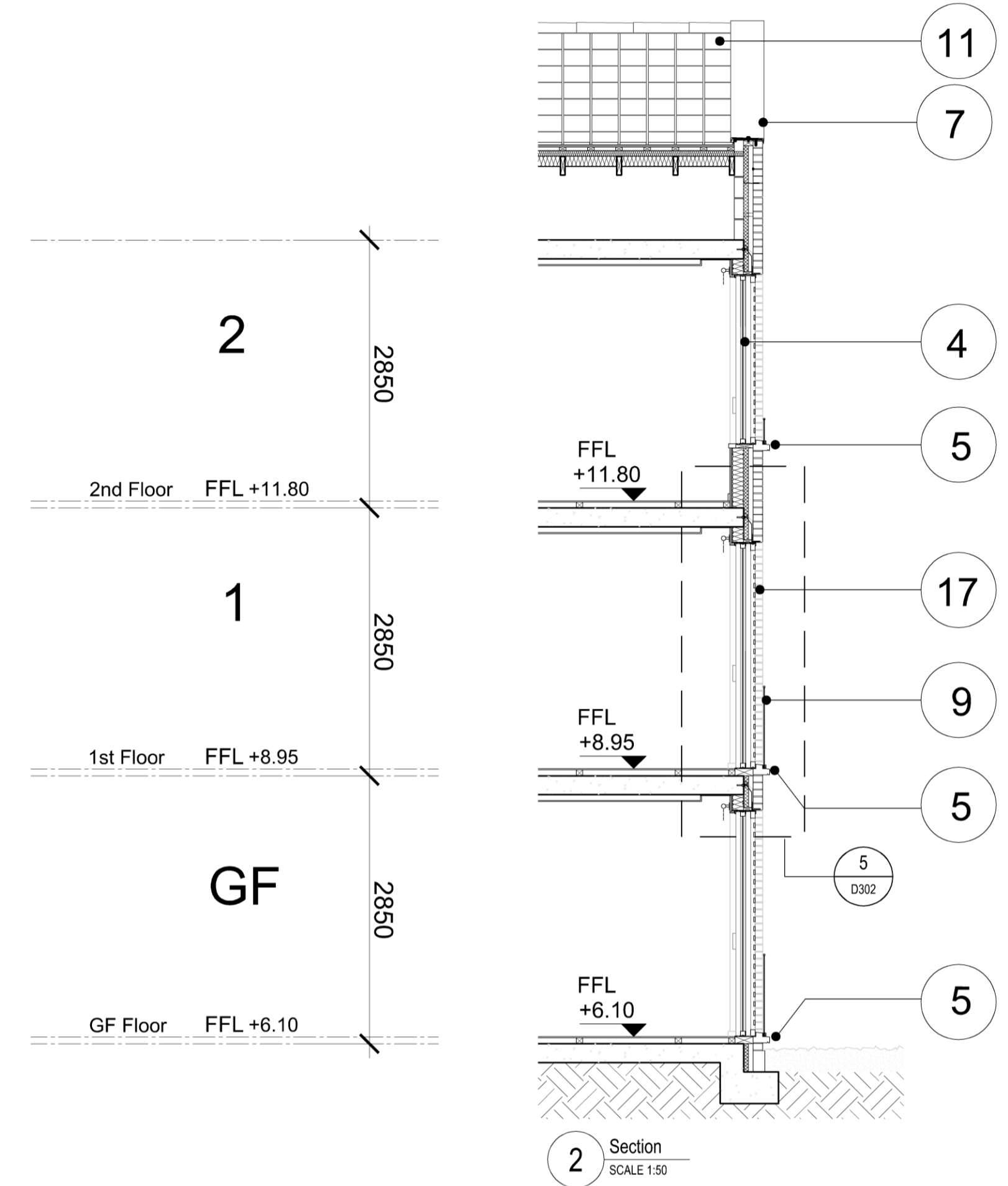
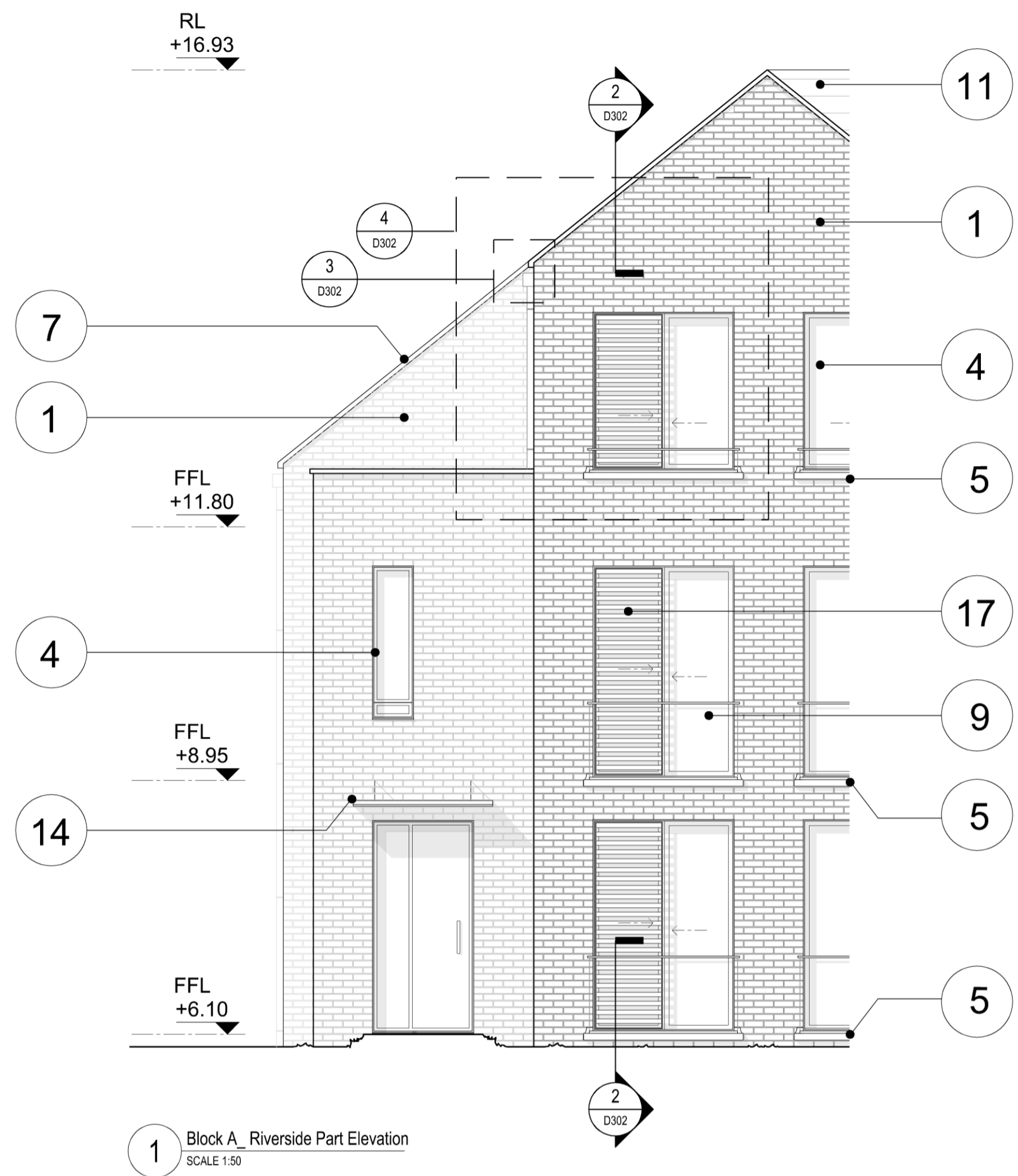


NOTES:  
 DO NOT SCALE. FIGURED DIMENSIONS ONLY TO BE TAKEN FROM THIS DRAWING. CHECK DIMENSIONS ON SITE AND REPORT DISCREPANCIES TO THE ARCHITECT.  
 THIS DRAWING IS PROTECTED BY COPYRIGHT.  
 ALL AREAS HAVE BEEN MEASURED FROM CURRENT DRAWINGS. THEY MAY VARY BECAUSE OF (EG) SURVEY, DESIGN DEVELOPMENT, CONSTRUCTION TOLERANCES, STATUTORY REQUIREMENTS OR RE-DEFINITION OF THE AREAS TO BE MEASURED.



- MATERIALS LEGEND:**
- 1 Facing brickwork mellow light cream.
  - 2 Facing brickwork mellow buff.
  - 3 Composite timber and RAL aluminium reversible double glazed windows (triple glazed onto water side) all to SBD policy 27.
  - 4 As "3" but sliding patio windows.
  - 5 White preformed concrete cills.
  - 6 White preformed concrete coping / fascia / facing.
  - 7 RAL coloured preformed aluminium coping.
  - 8 RAL coloured aluminium brise soleil.
  - 9 Toughened glass balcony with tubular brushed s.s. handrail.
  - 10 Satin brushed s.s. tubular balustrade with horizontal members to vertical flat balusters.
  - 11 Natural slate roofing tiles.
  - 12 Glazed entrance doors in RAL finished surrounds with glazed side screens to match all to SBD policy 20.
  - 13 RAL coloured aluminium composite cladding with concealed fixings.
  - 14 Glass canopy on aluminium system in RAL finish.
  - 15 RAL coloured steel fascia.
  - 16 Opaque glass panel.
  - 17 Sliding timber brise soleil.



P1 13.12.13 ISSUED AS PLANNING APPLICATION		SM	JW
No.	Date	Comment	Drawn
Revisions			
Issue Status			
<b>PLANNING</b>			
<b>tp bennett</b>			
architecture interiors planning			
One America Street London SE1 0NE UK +44 (0) 20 7208 2000 www.tpbenett.com			
London Moscow Abu Dhabi New York			
Project			
Teddington Riverside			
Proposed Residential Redevelopment			
Broom Road, Teddington			
Drawing Title			
Wall section 2-2			
Drawn	Date	Scale @ A1	Alt. Ref.
SM	19.11.2013	1:250	--
tp bennett Project No.		Drawing Number	Rev
A9991		D 0302	P1