

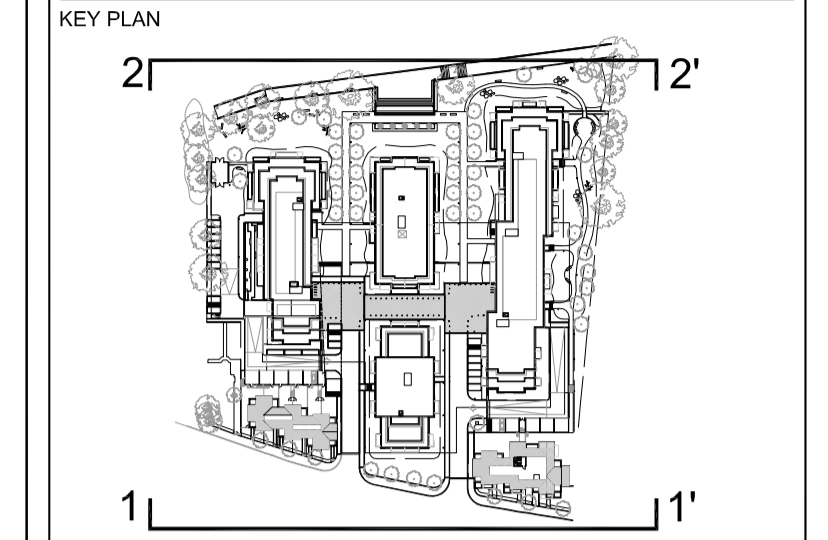


Proposed Elevation 1-1'



Proposed Elevation 2-2'

CLIENT
 STRUCTURAL ENGINEER
 SERVICES ENGINEER
 CONSULTANT



NOTES:
 DO NOT SCALE. FIGURED DIMENSIONS ONLY TO BE TAKEN FROM THIS DRAWINGS. CHECK DIMENSIONS ON SITE AND REPORT DISCREPANCIES TO THE ARCHITECT.
 THIS DRAWING IS PROTECTED BY COPYRIGHT.
 ALL AREAS HAVE BEEN MEASURED FROM CURRENT DRAWINGS. THEY MAY VARY BECAUSE OF (EG) SURVEY, DESIGN DEVELOPMENT, CONSTRUCTION TOLERANCES, STATUTORY REQUIREMENTS OR RE-DEFINITION OF THE AREAS TO BE MEASURED.

- MATERIALS LEGEND:**
- 1 Facing brickwork mellow light cream.
 - 2 Facing brickwork mellow buff.
 - 3 Composite timber and RAL aluminium reversible double glazed windows (triple glazed onto water side) all to SBD policy 27.
 - 4 As "3" but sliding patio windows.
 - 5 White preformed concrete cills.
 - 6 White preformed concrete coping / fascia / facing.
 - 7 RAL coloured preformed aluminium coping.
 - 8 RAL coloured aluminium brise soleil.
 - 9 Toughened glass balcony with tubular brushed s.s. handrail.
 - 10 Satin brushed s.s. tubular balustrade with horizontal members to vertical flat balusters.
 - 11 Natural slate roofing tiles.
 - 12 Glazed entrance doors in RAL finished surrounds with glazed side screens to match all to SBD policy 20.
 - 13 RAL coloured aluminium composite cladding with concealed fixings.
 - 14 Glass canopy on aluminium system in RAL finish.
 - 15 RAL coloured steel fascia.
 - 16 Opaque glass panel.
 - 17 Sliding timber brise soleil.

| | | | | |
|-----------|----------|--------------------------------|-------|-----|
| P1 | 13.12.13 | ISSUED AS PLANNING APPLICATION | SG | JW |
| No. | Date | Comment | Drawn | CHK |
| Revisions | | | | |

Issue Status
PLANNING
 tp bennett
 architecture
 interiors
 planning

One America Street London SE1 0NE UK +44 (0) 20 7208 2000 www.tp-bennett.com
 London Moscow Abu Dhabi New York

Project
Teddington Riverside
 Proposed Residential Redevelopment
 Broom Road, Teddington

Drawing Title
 Proposed Elevation 1-1' (Broom Rd)
 Proposed Elevation 2-2' (Riverside)

| | | | |
|-------|------------|------------|-----------|
| Drawn | Date | Scale @ A1 | Alt. Ref. |
| SG | 11.11.2013 | 1:250 | -- |

| | | |
|------------------------|----------------|-----|
| tp bennett Project No. | Drawing Number | Rev |
| A9991 | D 0200 | P1 |