

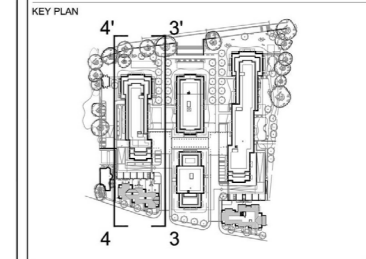


Proposed Elevation 3-3'



Proposed Elevation 4-4'

CLIENT  
 STRUCTURAL ENGINEER  
 SERVICES ENGINEER  
 CONSULTANT



NOTES:  
 DO NOT SCALE. FIGURED DIMENSIONS ONLY TO BE TAKEN FROM THIS DRAWING. CHECK DIMENSIONS ON SITE AND REPORT DISCREPANCIES TO THE ARCHITECT.  
 THIS DRAWING IS PROTECTED BY COPYRIGHT.  
 ALL AREAS HAVE BEEN MEASURED FROM CURRENT DRAWINGS. THEY MAY VARY BECAUSE OF (EG) SURVEY, DESIGN DEVELOPMENT, CONSTRUCTION TOLERANCES, STATUTORY REQUIREMENTS OR RE-DEFINITION OF THE AREAS TO BE MEASURED.

- MATERIALS LEGEND:**
- 1 Facing brickwork mellow light cream.
  - 2 Facing brickwork mellow buff.
  - 3 Composite timber and RAL aluminium reversible double glazed window (triple glazed onto water side) all to SBD policy 27.
  - 4 As "3" but sliding patio windows.
  - 5 White preformed concrete cills.
  - 6 White preformed concrete coping / fascia / facing.
  - 7 RAL coloured preformed aluminium coping.
  - 8 RAL coloured aluminium brise soleil.
  - 9 Toughened glass balcony with tubular brushed s.s. handrail.
  - 10 Satin brushed s.s. tubular balustrade with horizontal members to vertical flat balusters.
  - 11 Natural slate roofing tiles.
  - 12 Glazed entrance doors in RAL finished surrounds with glazed side screens to match all to SBD policy 20.
  - 13 RAL coloured aluminium composite cladding with concealed fixings.
  - 14 Glass canopy on aluminium system in RAL finish.
  - 15 RAL coloured steel fascia.
  - 16 Opaque glass panel.
  - 17 Sliding timber brise soleil.

P2	12.06.14	Updated in line with flood and landscape refinements	SG	JW
P1	13.12.13	ISSUED AS PLANNING APPLICATION	SG	JW
No.	Date	Comment	Drawn	CHK'd
Revisions				

Issue Status  
**PLANNING**

**tp bennett**  
 architecture  
 interiors  
 planning

One America Street London SE1 0NE UK +44 (0) 20 7208 2000 www.tpbennett.com  
 London Moscow Abu Dhabi New York

Project  
 Teddington Riverside  
 Proposed Residential Redevelopment  
 Broom Road, Teddington

Drawing Title  
 Proposed Elevation 3-3'  
 Proposed Elevation 4-4'

Drawn	Date	Scale @ A1	Alt. Ref.
SG	11.11.2013	1:250	--
tp bennett Project No.	Drawing Number	Rev	
A9991	D 0201	P2	



Proposed Elevation 5-5'



Proposed Elevation 6-6'

CLIENT

STRUCTURAL ENGINEER

SERVICES ENGINEER

CONSULTANT

KEY PLAN

NOTES:

DO NOT SCALE. FIGURED DIMENSIONS ONLY TO BE TAKEN FROM THIS DRAWING. CHECK DIMENSIONS ON SITE AND REPORT DISCREPANCIES TO THE ARCHITECT.

THIS DRAWING IS PROTECTED BY COPYRIGHT.

ALL AREAS HAVE BEEN MEASURED FROM CURRENT DRAWINGS. THEY MAY VARY BECAUSE OF (EG) SURVEY, DESIGN DEVELOPMENT, CONSTRUCTION TOLERANCES, STATUTORY REQUIREMENTS OR RE-DEFINITION OF THE AREAS TO BE MEASURED.

**MATERIALS LEGEND:**

- 1 Facing brickwork mellow light cream.
- 2 Facing brickwork mellow buff.
- 3 Composite timber and RAL aluminium rivenside double glazed window (triple glazed onto water side) all to SBD policy Z7.
- 4 As "3" but sliding patio windows.
- 5 White preformed concrete eills.
- 6 White preformed concrete coping / fascia / facing.
- 7 RAL coloured preformed aluminium coping.
- 8 RAL coloured aluminium brise soleil.
- 9 Toughened glass balcony with tubular brushed s.s. handrail.
- 10 Satin brushed s.s. tubular balustrade with horizontal members to vertical flat balusters.
- 11 Natural slate roofing tiles.
- 12 Glazed entrance doors in RAL finished surrounds with glazed side screens to match all to SBD policy Z0.
- 13 RAL coloured aluminium composite cladding with concealed fixings.
- 14 Glass canopy on aluminium system in RAL finish.
- 15 RAL coloured steel fascia.
- 16 Opaque glass panel.
- 17 Sliding timber brise soleil.

P2	12.06.14	Updated in line with flood and landscape refinements	SG	JW
P1	13.12.13	ISSUED AS PLANNING APPLICATION	SG	JW
No.	Date	Comment	Drawn	Chkd
Revisions				

Issue Status

**PLANNING**

**tp bennett**  
architecture  
interiors  
planning

One America Street London SE1 0NE UK +44 (0) 20 7208 2000 www.tpbennt.com  
London Moscow Abu Dhabi New York

Project  
Teddington Riverside  
Proposed Residential Redevelopment  
Broom Road, Teddington

Drawing Title  
Proposed Elevation 5-5'  
Proposed Elevation 6-6'

Drawn	Date	Scale @ A1	Alt. Ref.
SG	11.11.2013	1:250	

tp bennett Project No.	Drawing Number	Rev
A9991	D 0202	P2



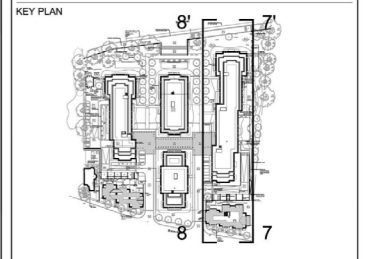


Proposed Elevation 7-7'



Proposed Elevation 8-8'

CLIENT  
 STRUCTURAL ENGINEER  
 SERVICES ENGINEER  
 CONSULTANT



NOTES:  
 DO NOT SCALE. FIGURED DIMENSIONS ONLY TO BE TAKEN FROM THIS DRAWING. CHECK DIMENSIONS ON SITE AND REPORT DISCREPANCIES TO THE ARCHITECT.  
 THIS DRAWING IS PROTECTED BY COPYRIGHT.  
 ALL AREAS HAVE BEEN MEASURED FROM CURRENT DRAWINGS. THEY MAY VARY BECAUSE OF (EG) SURVEY, DESIGN DEVELOPMENT, CONSTRUCTION TOLERANCES, STATUTORY REQUIREMENTS OR RE-DEFINITION OF THE AREAS TO BE MEASURED.

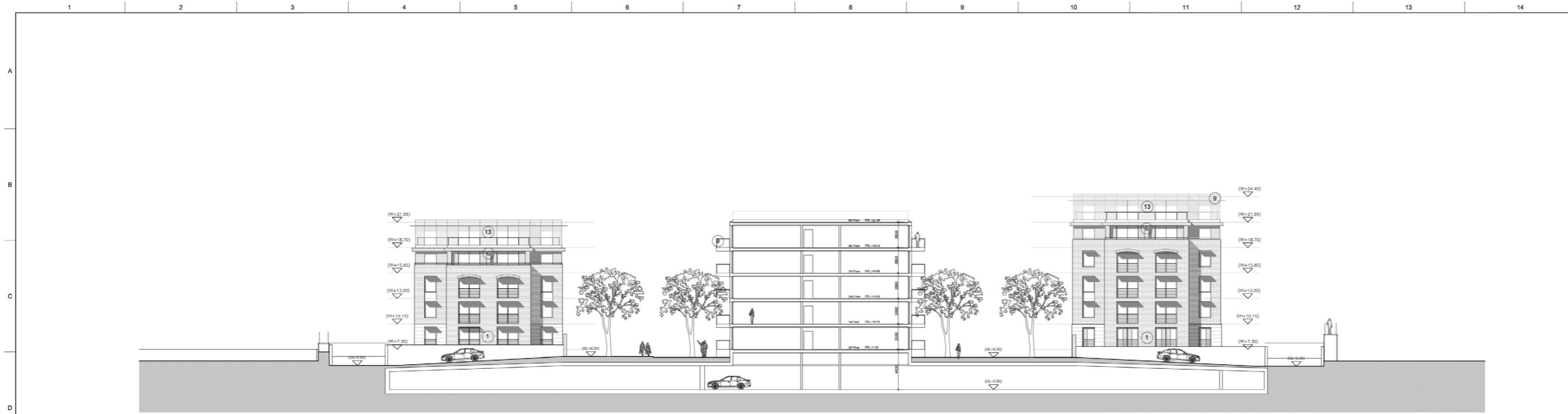
- MATERIALS LEGEND:**
- 1 Facing brickwork mellow light cream.
  - 2 Facing brickwork mellow buff.
  - 3 Composite timber and RAL aluminium reversible double glazed window (triple glazed onto water side) all to SBD polycy 27.
  - 4 As "3" but sliding patio windows.
  - 5 White preformed concrete cills.
  - 6 White preformed concrete coping / fascia / facing.
  - 7 RAL coloured preformed aluminium coping.
  - 8 RAL coloured aluminium brise soleil.
  - 9 Toughened glass balcony with tubular brushed s.s. handrail.
  - 10 Satin brushed s.s. tubular balustrade with horizontal members to vertical flat balusters.
  - 11 Natural slate roofing tiles.
  - 12 Glazed entrance doors in RAL finished surrounds with glazed side screens to match all to SBD polycy 20.
  - 13 RAL coloured aluminium composite cladding with concealed fixings.
  - 14 Glass canopy on aluminium system in RAL finish.
  - 15 RAL coloured steel fascia.
  - 16 Opaque glass panel.
  - 17 Sliding timber brise soleil.

P2	12.06.14	Updated in line with flood and landscape refinements	SG	JW
P1	13.12.13	ISSUED AS PLANNING APPLICATION	SG	JW
No.	Date	Comment	Drawn	CHK'd
Revisions				

Issue Status  
**PLANNING**  
**tp bennett**  
 architecture  
 interiors  
 planning  
 One America Street London SE1 0NE UK +44 (0) 20 7208 2000 www.tpbenntt.com  
 London Moscow Abu Dhabi New York

Project  
 Teddington Riverside  
 Proposed Residential Redevelopment  
 Broom Road, Teddington  
 Drawing Title  
 Proposed Elevation 7-7' (Broom Rd)  
 Proposed Elevation 8-8' ( Riverside)

Drawn	Date	Scale @ A1	Alt. Ref.
SG	11.11.2013	1:250	--
tp bennett Project No.	Drawing Number	Rev	
A9991	D 0203	P2	

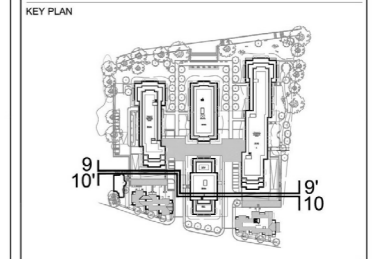


Proposed Elevation 9-9'



Proposed Elevation 10-10'

CLIENT  
 STRUCTURAL ENGINEER  
 SERVICES ENGINEER  
 CONSULTANT



NOTES:  
 DO NOT SCALE. FIGURED DIMENSIONS ONLY TO BE TAKEN FROM THIS DRAWING. CHECK DIMENSIONS ON SITE AND REPORT DISCREPANCIES TO THE ARCHITECT.  
 THIS DRAWING IS PROTECTED BY COPYRIGHT.  
 ALL AREAS HAVE BEEN MEASURED FROM CURRENT DRAWINGS. THEY MAY VARY BECAUSE OF (EG) SURVEY, DESIGN DEVELOPMENT, CONSTRUCTION TOLERANCES, STATUTORY REQUIREMENTS OR RE-DEFINITION OF THE AREAS TO BE MEASURED.

- MATERIALS LEGEND:
- 1 Facing brickwork mellow light cream.
  - 2 Facing brickwork mellow buff.
  - 3 Composite timber and RAL aluminium reversible double glazed windows (triple glazed onto water side) all to SBD policy 27.
  - 4 As "3" but sliding patio windows.
  - 5 White preformed concrete cills.
  - 6 White preformed concrete coping / fascia / facing.
  - 7 RAL coloured preformed aluminium coping.
  - 8 RAL coloured aluminium brise soleil.
  - 9 Toughened glass balcony with tubular brushed s.s. handrail.
  - 10 Satin brushed s.s. tubular balustrade with horizontal members to vertical flat balusters.
  - 11 Natural slate roofing tiles.
  - 12 Glazed entrance doors in RAL finished surrounds with glazed side screens to match all to SBD policy 20.
  - 13 RAL coloured aluminium composite cladding with concealed fixings.
  - 14 Glass canopy on aluminium system in RAL finish.
  - 15 RAL coloured steel fascia.
  - 16 Opaque glass panel.
  - 17 Sliding timber brise soleil.

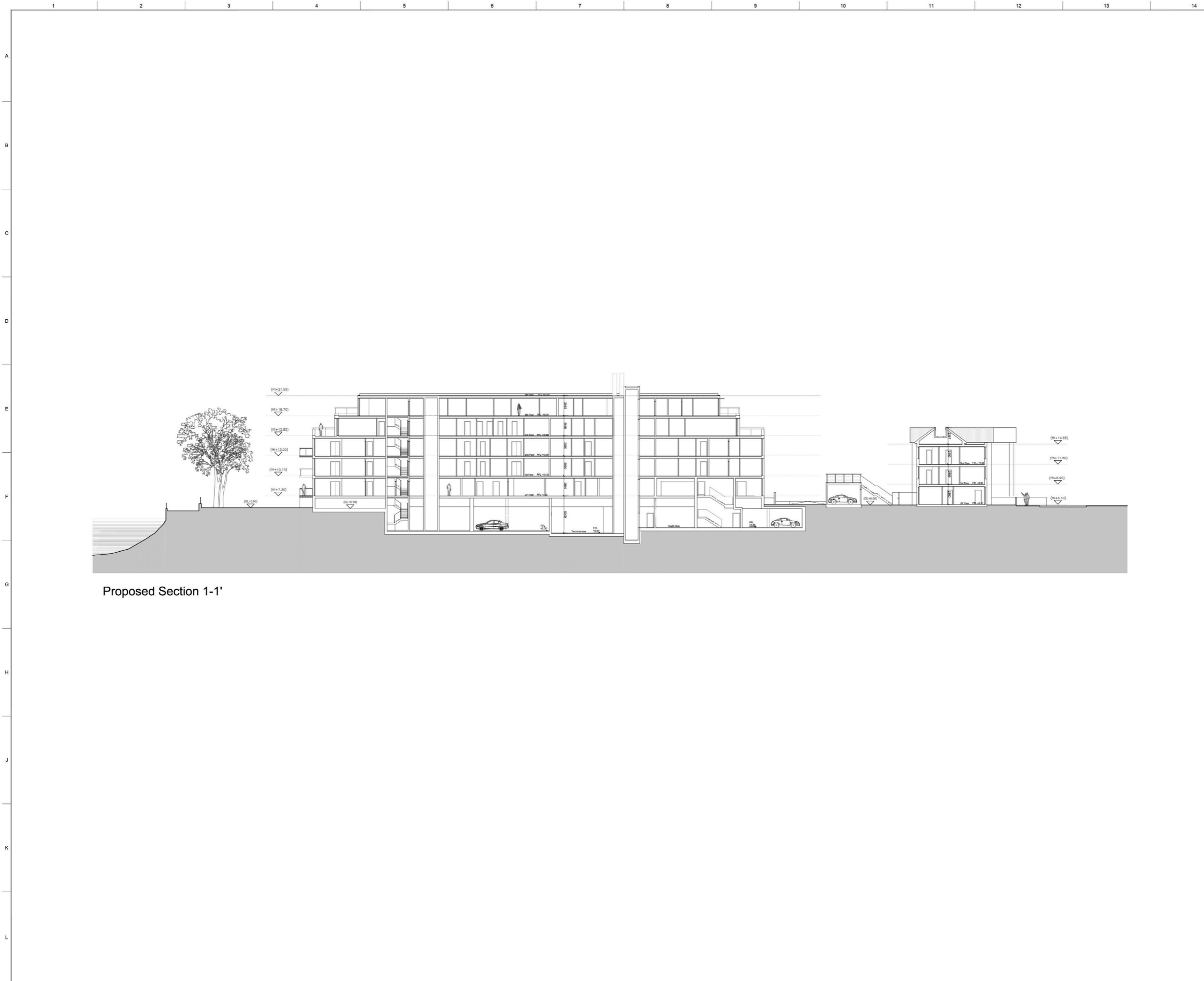
P2	12.06.14	Updated in line with flood and landscape refinements	SG	JW
P1	13.12.13	ISSUED AS PLANNING APPLICATION	MA	JW
No.	Date	Comment	Drawn	CHK'd

Issue Status  
**PLANNING**  
**tp bennett**  
 architecture  
 interiors  
 planning  
 One America Street London SE1 0NE UK +44 (0) 20 7208 2000 www.tpbennett.com  
 London Moscow Abu Dhabi New York

Project  
**Teddington Riverside**  
**Proposed Residential Redevelopment**  
**Broom Road, Teddington**

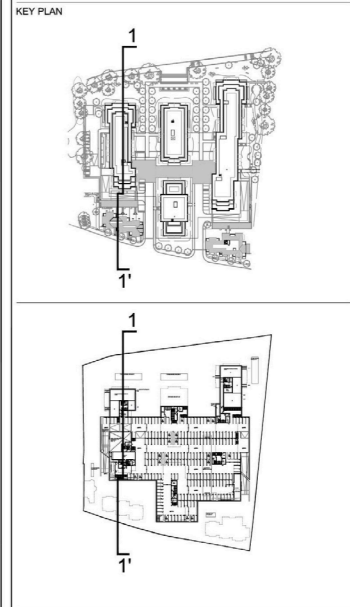
Drawing Title  
**Proposed Elevation 9-9'**  
**Proposed Elevation 10-10'**

Drawn	Date	Scale @ A1	Alt. Ref.
SG	11.11.2013	1:250	--
tp bennett Project No.	Drawing Number	Rev	
A9991	D 0204	P2	



Proposed Section 1-1'

CLIENT  
 STRUCTURAL ENGINEER  
 SERVICES ENGINEER  
 CONSULTANT



NOTES:  
 DO NOT SCALE. FIGURED DIMENSIONS ONLY TO BE TAKEN FROM THIS DRAWING. CHECK DIMENSIONS ON SITE AND REPORT DISCREPANCIES TO THE ARCHITECT.  
 THIS DRAWING IS PROTECTED BY COPYRIGHT.  
 ALL AREAS HAVE BEEN MEASURED FROM CURRENT DRAWINGS. THEY MAY VARY BECAUSE OF (EG) SURVEY, DESIGN DEVELOPMENT, CONSTRUCTION TOLERANCES, STATUTORY REQUIREMENTS OR RE-DEFINITION OF THE AREAS TO BE MEASURED.

P2	12.06.14	Updated in line with flood and landscape refinements	SG	JW
P1	13.12.13	ISSUED AS PLANNING APPLICATION	MA	JW
No.	Date	Comment	Drawn	Chkd

Issue Status  
**PLANNING**

**tp bennett**  
 architecture  
 interiors  
 planning

One America Street London SE1 0NE UK +44 (0) 20 7208 2000 www.tpennett.com  
 London Moscow Abu Dhabi New York

Project  
 Teddington Riverside  
 Proposed Residential Redevelopment  
 Broom Road, Teddington

Drawing Title  
 Proposed Section 1-1'

Drawn	Date	Scale @ A1	Alt. Ref.
MA	11.11.2013	1:250	--

tp bennett Project No.	Drawing Number	Rev
A9991	D 0300	P2