

APPENDIX 2: Historic and modern maps consulted

| | |
|------|---|
| 1575 | Saxton's map of Surrey, Sussex, Middlesex and Kent (Fig. 3) |
| 1611 | Speed's map of Surrey (Fig. 4) |
| 1729 | Senex's map of Surrey |
| 1766 | Rocque's map of London |
| 1768 | Rocque's map of Surrey (Fig. 5) |
| 1771 | Richardson's map of the Manor of Richmond (Fig. 6) |
| 1793 | Lindley and Crossley's map of Surrey |
| 1823 | C and J Greenwood's map of Surrey |
| 1866 | First Edition Ordnance Survey (Fig. 7) |
| 1896 | Second Edition Ordnance Survey (Fig. 8) |
| 1913 | Third Edition Ordnance Survey (Fig. 9) |
| 1915 | Ordnance Survey |
| 1933 | Ordnance Survey |
| 1959 | Ordnance Survey (Fig. 10) |
| 1973 | Ordnance Survey |
| 1986 | Ordnance Survey |
| 1991 | Ordnance Survey |
| 2012 | Ordnance Survey (Fig. 2) |

APPENDIX 3: Geotechnical data

INSTITUTE OF GEOLOGICAL SCIENCES
RECORD OF SHAFT OR BOREHOLE

Name and Number of Shaft or Borehole: RICHMOND COURT HOUSE. B.H.1.

For whom made E.L.C.

Town or Village RICHMOND County _____

Exact site (reference to a fixed point on 1-in map): _____

Purpose for which made TRIAL

Ground Level at ^{shaft}bore relative to O.D. _____ If not ground level give O.D. of beginning of ^{shaft}bore _____

Made by _____ Date of sinking 1970

Information from E.L.C. Examined by _____

6-in Map Registration No.
TO 17 NE /34

National Grid Reference
1792 7524

1-in New Series Map No. 270 Enter 'C' if Confidential

SPECIMEN NUMBERS AND ADDITIONAL NOTES

| GEOLOGICAL CLASSIFICATION | 1 (NEWLIN DATUM) + 24.27 + 14.0 | THICKNESS | | DEPTH | |
|---------------------------|--|-----------|----|-------|----|
| | | FT | IN | FT | IN |
| | 0.01 | | | | |
| | 5'-0" | | | | |
| | 2-13 | | | | |
| | 1 | | | | |
| | 14'-0" | | | | |
| | 00 + 1.0 | | | | |
| | 6" | | | | |
| | 18'-6" | | | | |
| | 40'-0" | | | | |

*Hand ground.
(Ash, bricks, etc.)*

*Made ground.
(Brown clayey sand,
brick fragments,
stones, etc.)*

*Brown sand and
gravel with some
clay*

*Stiff
clay
with
in fissures with
small pieces
sand and stones.*

*Stiff grey-brown
fissured
clay*

D 7147, W/L 24/081 4,000 9/67 KCN Cp. 807 (15564) (888)

INSTITUTE OF GEOLOGICAL SCIENCES
RECORD OF SHAFT OR BOREHOLE

6-in Map Registration No.

TA 17 NE/35

Name and Number of Shaft or Borehole:

RICHMOND COURT HOUSE BH 2

National Grid Reference

1798 7523

For whom made *GLC*

Town or Village *RICHMOND* County

Exact site (reference to a fixed point on 1-in map):

1-in New Series Map No.

Enter 'C' if Confidential

270

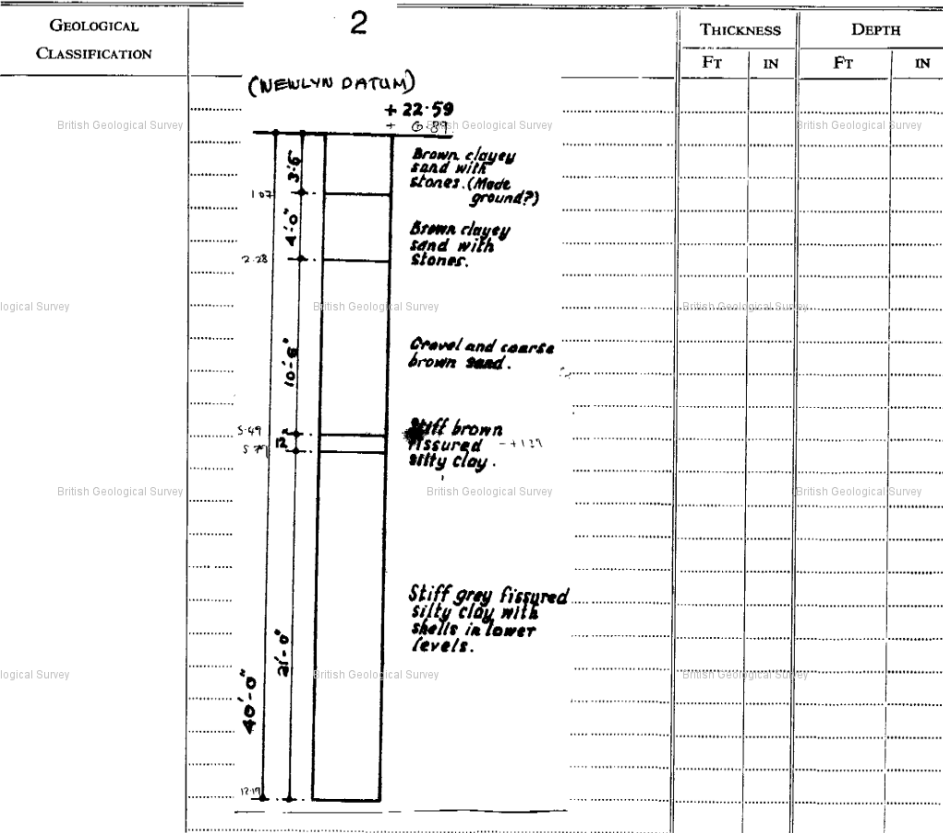
Purpose for which made *TRIAL*

Ground Level at shaft bore relative to O.D. If not ground level give O.D. of beginning of shaft bore

Made by Date of sinking *1970*

Information from *G.L.C.* Examined by

SPECIMEN NUMBERS AND ADDITIONAL NOTES



D. 7547 Wt. 243081 4.000 9/67 KCN Cp. 807 (5556) (888)

RECORD OF BOREHOLE No: 3

Location : RICHMOND PARK LANE

SHEET 1 OF 1

Contract No. : 1131

Borehole Dia : 0.20m

Type of Boring : Shell & Auger

Casing : 0.20m to 5.80m

Date (started) : 15.3.73

Ground Level : 6.67m AODM

| Date & Time | Depth of Casing | Water Level | SAMPLES | | | STRATA | | DESCRIPTION OF STRATA |
|-------------|-----------------|-------------|------------------|------|-----|--------|-------|--|
| | | | Depth | Type | No. | Legend | Depth | |
| | | | | | | | 0.00 | |
| 0.20 | | | 0.30 | D | 1 | | | MADE GROUND (loam and sandy clay) |
| 0.40 | | | 0.70 (N = 7) | D | 2 | | 1.40 | |
| 0.60 | | | | | | | | Medium dense/dense yellow sandy coarse medium fine GRAVEL |
| 0.80 | | | 1.50 (N = 17) | D | 3 | | 1.40 | |
| 1.00 | | | | | | | | |
| 1.20 | | | 2.25 | D | 4 | | | |
| 1.40 | | | | | | | | Stiff brown sandy CLAY with gravel |
| 1.60 | | | 3.00 (N = 31) | D | 5 | | 4.00 | |
| 1.80 | | | | | | | | |
| 2.00 | | | 3.75 | D | 6 | | | |
| 2.20 | | | | | | | | Firm/stiff dark grey/brown silty fissured CLAY |
| 2.40 | | | 4.50 (N = 27) | D | 7 | | 5.40 | |
| 2.60 | | | | | | | 5.65 | |
| 2.80 | | | 5.25 | D | 8 | | | |
| 3.00 | | | 5.40 | D | 9 | | | |
| 3.20 | | | 5.60 - 6.05 | U | 10 | | | |
| 3.40 | | | 6.25 | D | 11 | | | |
| 3.60 | | | | | | | | Firm/stiff dark grey/brown silty fissured CLAY |
| 3.80 | | | 7.00 - 7.45 | U | 12 | | 3.25 | |
| 4.00 | | | | | | | | |
| 4.20 | | | 7.75 | D | 13 | | | |
| 4.40 | | | | | | | | Firm/stiff dark grey/brown silty fissured CLAY |
| 4.60 | | | 8.45 - 8.90 | U | 14 | | 8.90 | |
| 4.80 | | | 8.90 | D | 15 | | 8.90 | |
| 5.00 | | | | | | EOB | | |

REMARKS: Water added to assist shelling.

SCALE 1 : 50

Foundation Engineering Ltd.

RECORD OF BOREHOLE No: 4

SHEET 1 OF 1.....

Location : RICHMOND PARK LANE
 Contract No. : 1131
 Type of Boring : Shell & Auger
 Date (started) : 14.3.73

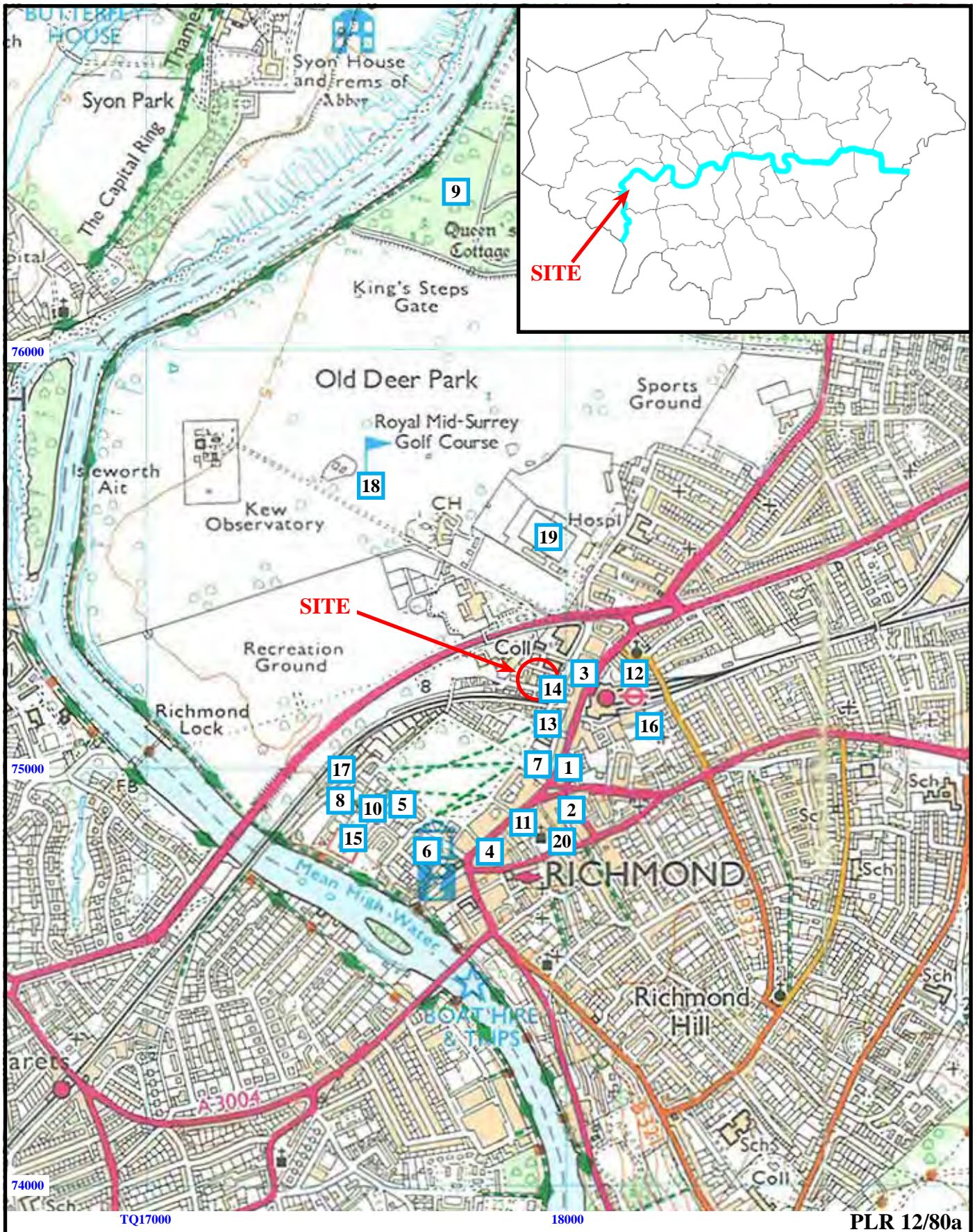
Borehole Dia : 0.20m
 Casing : 0.20m to 4.60m
 Ground Level : 5.78m AODM

| Date & Time | Depth of Casing | Water Level | SAMPLES | | | Legend | STRATA | | DESCRIPTION OF STRATA |
|-------------|-----------------|-------------|-------------|------|-----|--------|--------|-----------|--|
| | | | Depth | Type | No. | | Depth | Thickness | |
| 0.20 | | | 0.25 | D | 1 | | 0.00 | | MADE GROUND (ash, brick, glass and gravel) |
| 0.40 | | | (N = 3) | | | | | 1.10 | |
| 0.60 | | | | | | | | | |
| 0.80 | | | | | | | | | |
| 1.00 | | | 1.00 | D | 2 | | | 1.10 | |
| 1.20 | | | | | | | | | |
| 1.40 | | | 1.30 | D | 3 | | | | |
| 1.60 | | | (N = 19) | | | | | | |
| 1.80 | | | | | | | | | |
| 2.00 | | | 2.00 | D | 4 | | | | |
| 2.20 | | | | | | | | | |
| 2.60 | | | | | | | | | |
| 2.80 | | | | | | | | | |
| 3.00 | | | 3.00 | D | 5 | | | | |
| 3.20 | | | (N = 34) | | | | | | |
| 3.40 | | | | | | | | | |
| 3.60 | | | | | | | | | |
| 3.80 | | | 3.75 | D | 6 | | | | |
| 4.00 | | | | | | | | | |
| 4.20 | | | | | | | | | |
| 4.40 | | | 4.45 | D | 7 | | 4.45 | | |
| 4.60 | | | | | | | | 0.35 | |
| 4.80 | | | 4.75 - 5.20 | U | 8 | | 4.80 | | |
| 5.00 | | | | | | | | | |
| 5.20 | | | | | | | | | |
| 5.40 | | | 5.50 | D | 9 | | | | |
| 5.60 | | | | | | | | | |
| 5.80 | | | | | | | | | |
| 6.00 | | | | | | | | | |
| 6.20 | | | 6.25 - 6.70 | U | 10 | | | 3.10 | |
| 6.40 | | | | | | | | | |
| 6.60 | | | | | | | | | |
| 6.80 | | | | | | | | | |
| 7.00 | | | 7.00 | D | 11 | | | | |
| 7.20 | | | | | | | | | |
| 7.40 | | | | | | | | | |
| 7.60 | | | 7.50 - 7.88 | U | 12 | | | | |
| 7.80 | | | 7.90 | D | 13 | | | | |
| 8.00 | | | | | | | | 7.90 | |
| 8.20 | | | | | | EOB | | | |
| 8.40 | | | | | | | | | |
| 8.60 | | | | | | | | | |
| 8.80 | | | | | | | | | |
| 9.00 | | | | | | | | | |
| 9.20 | | | | | | | | | |
| 9.40 | | | | | | | | | |
| 9.60 | | | | | | | | | |
| 9.80 | | | | | | | | | |
| 10.00 | | | | | | | | | |

REMARKS: Water added to assist shelling

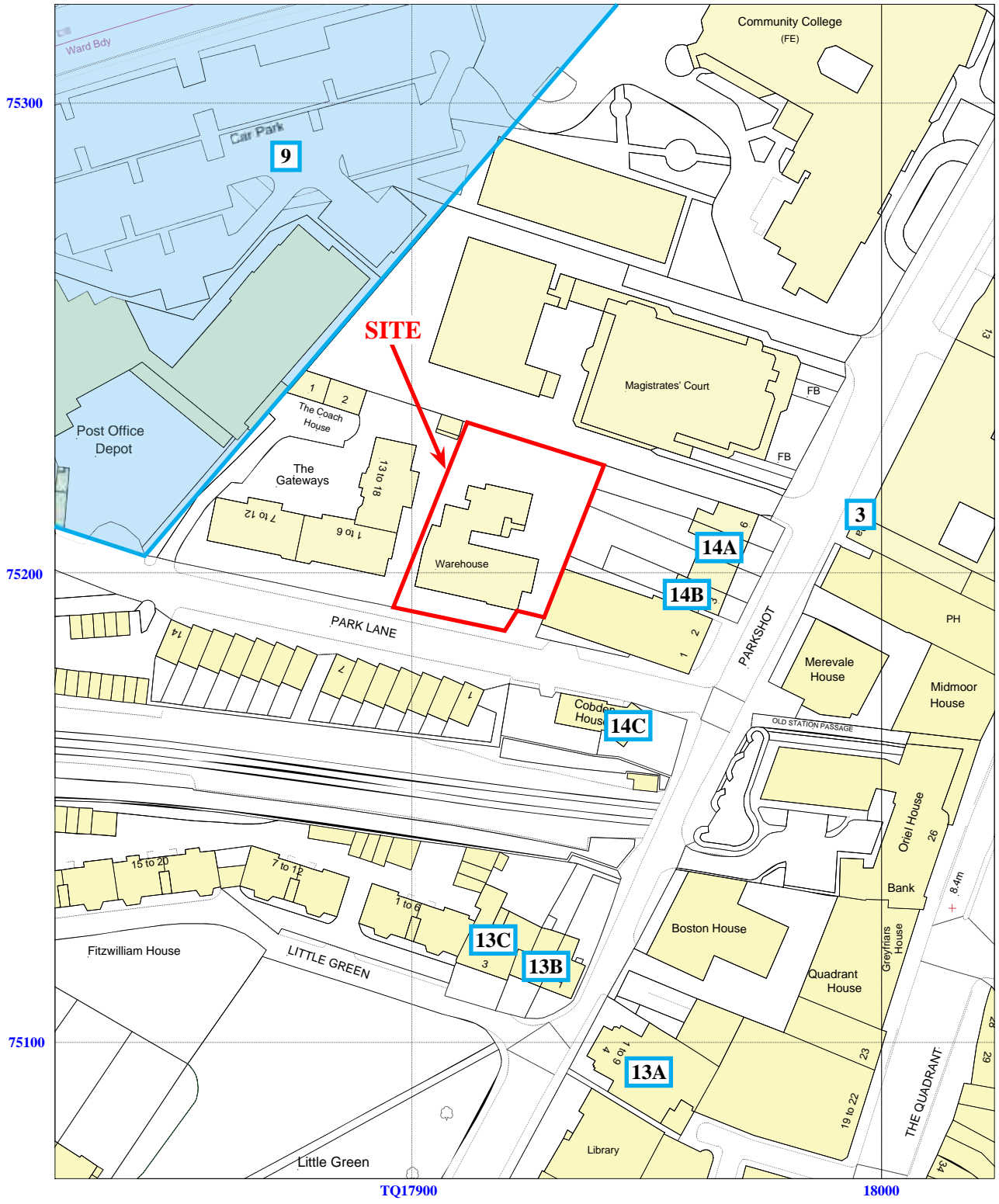
SCALE 1 : 50

Foundation Engineering Ltd.



**The Old School, Park Lane, Richmond,
London Borough of Richmond, 2012
Desk-based Heritage Assessment**

Figure 1. Location of site within Richmond and London showing GLHER results within a 500m radius.
Reproduced from Ordnance Survey Explorer 161 at 1:12500
Ordnance Survey Licence 100025880



PLR 12/80a

**The Old School, Park Lane, Richmond,
London Borough of Richmond, 2012
Desk-based Heritage Assessment**

Figure 2. Location of site within Richmond showing GLHER results and listed buildings.
Reproduced from Ordnance Survey at 1:1250
Ordnance Survey Licence 100025880





PLR 12/80a

N



The Old School, Park Lane, Richmond,
 London Borough of Richmond, 2012
 Desk-based Heritage Assessment

Figure 3. Saxton's map of Surrey, Sussex, Middlesex and Kent, 1575.

THAMES VALLEY
 ARCHAEOLOGICAL
 SERVICES



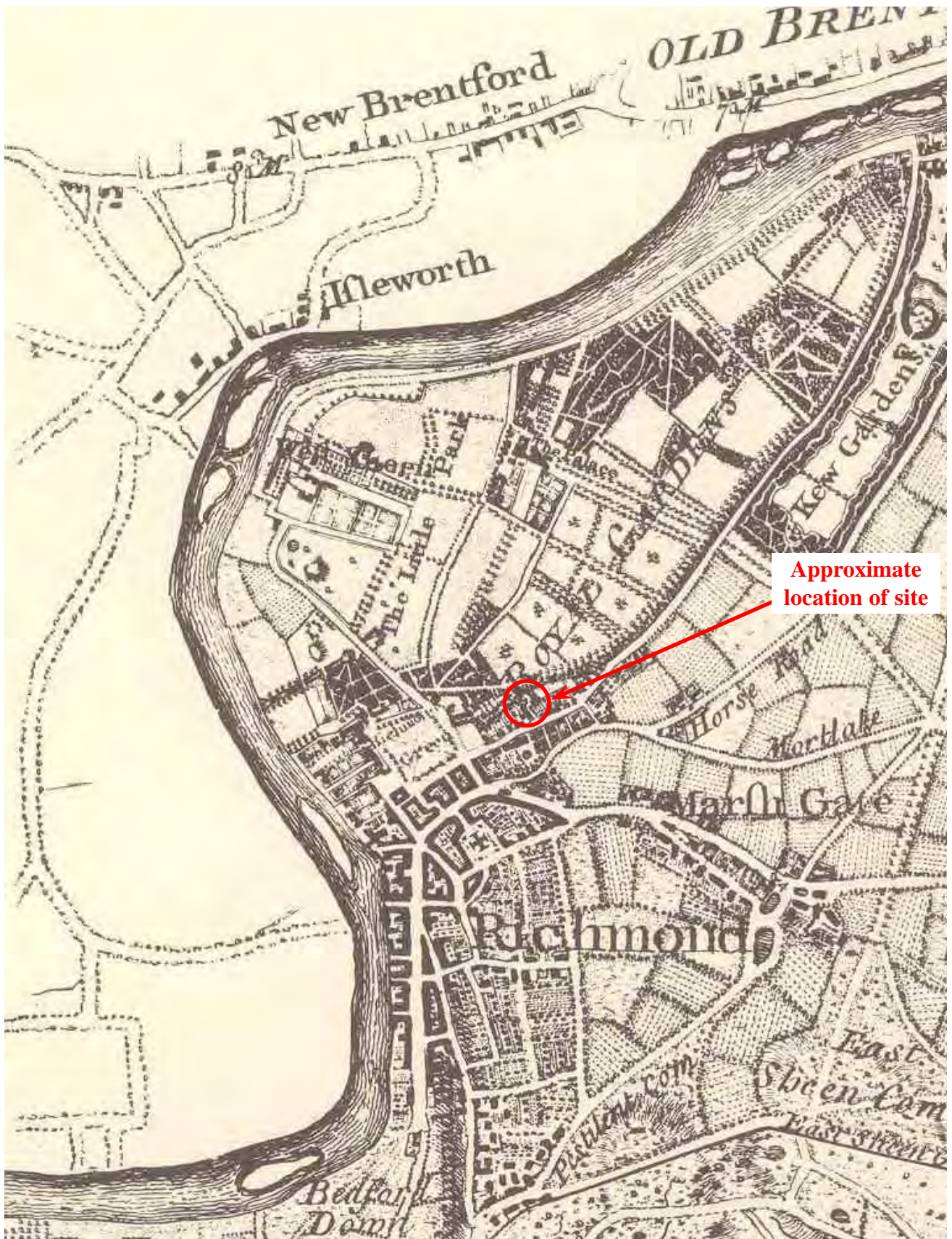
PLR 12/80a

N



The Old School, Park Lane, Richmond,
London Borough of Richmond, 2012
Desk-based Heritage Assessment
Figure 4. Speed's map of Surrey, 1611.

THAMES VALLEY
ARCHAEOLOGICAL
SERVICES



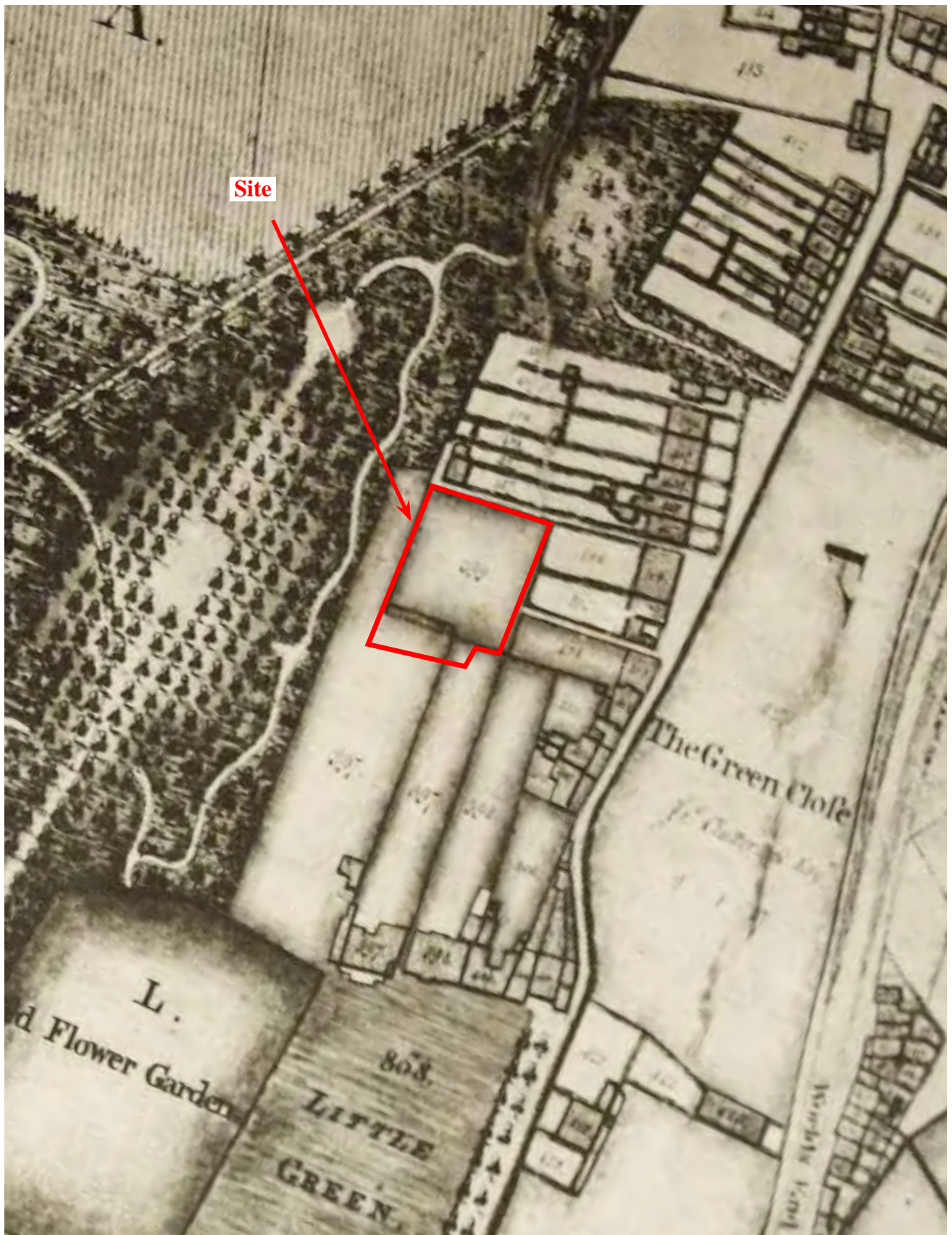
PLR 12/80a

N

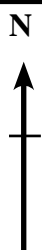


The Old School, Park Lane, Richmond,
London Borough of Richmond, 2012
Desk-based Heritage Assessment
Figure 5. Rocque's map of Surrey, 1768.

THAMES VALLEY
ARCHAEOLOGICAL
SERVICES



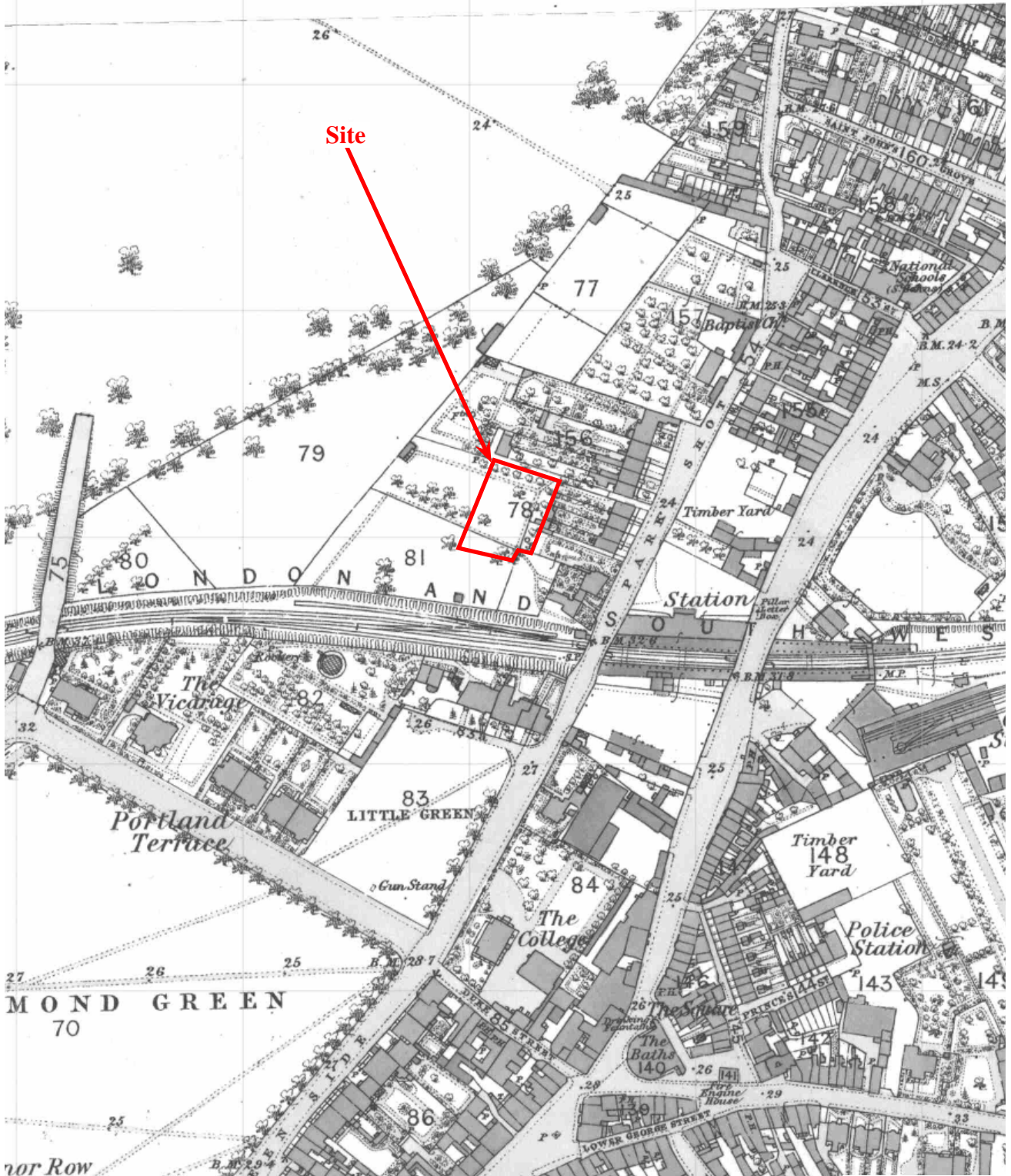
PLR 12/80a



**The Old School, Park Lane, Richmond,
London Borough of Richmond, 2012
Desk-based Heritage Assessment**

Figure 6. Richardson's map of the Manor of Richmond, 1771.

THAMES VALLEY
ARCHAEOLOGICAL
SERVICES

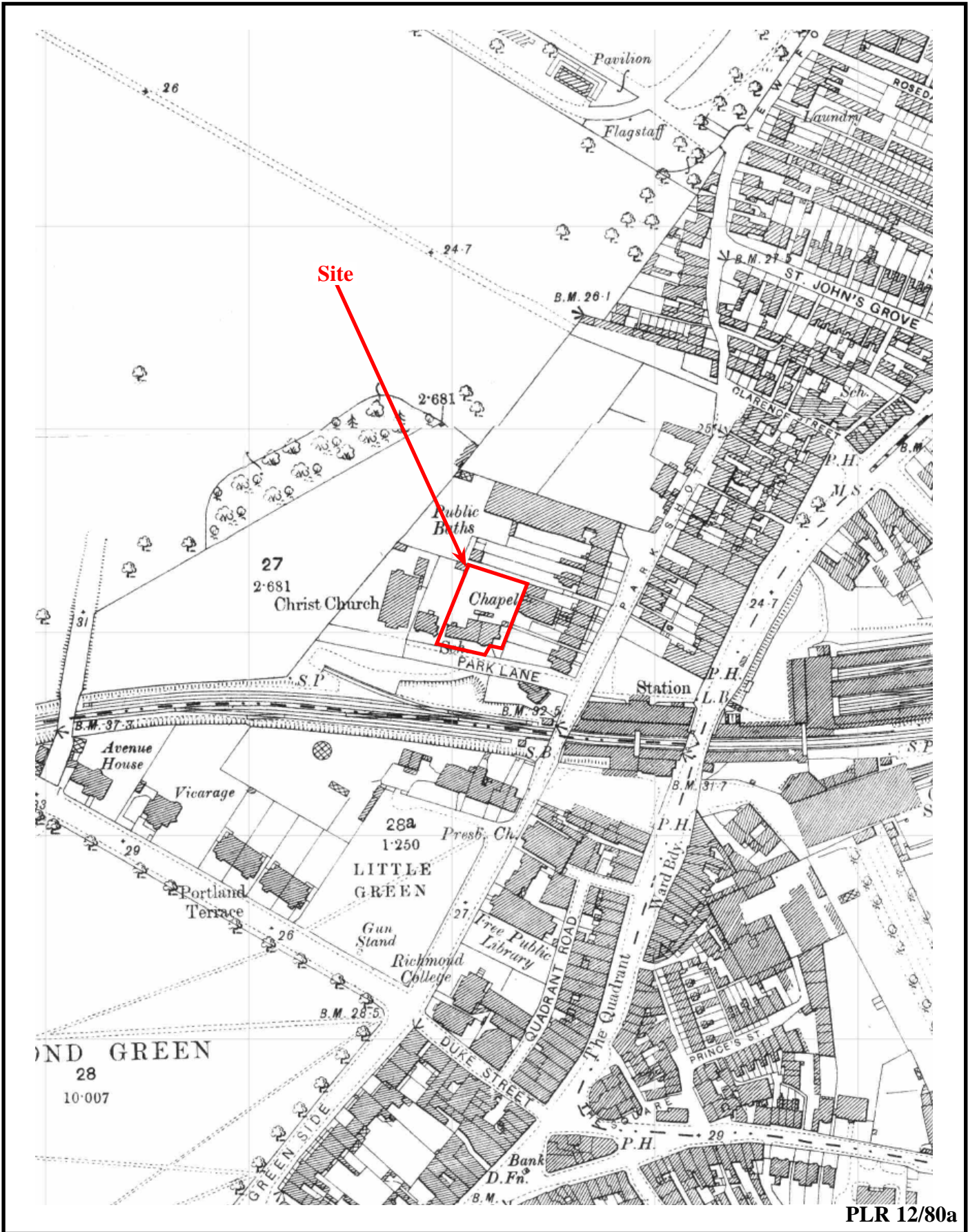


PLR 12/80a



The Old School, Park Lane, Richmond,
 London Borough of Richmond, 2012
 Desk-based Heritage Assessment
 Figure 7. Ordnance Survey First Edition, 1866.



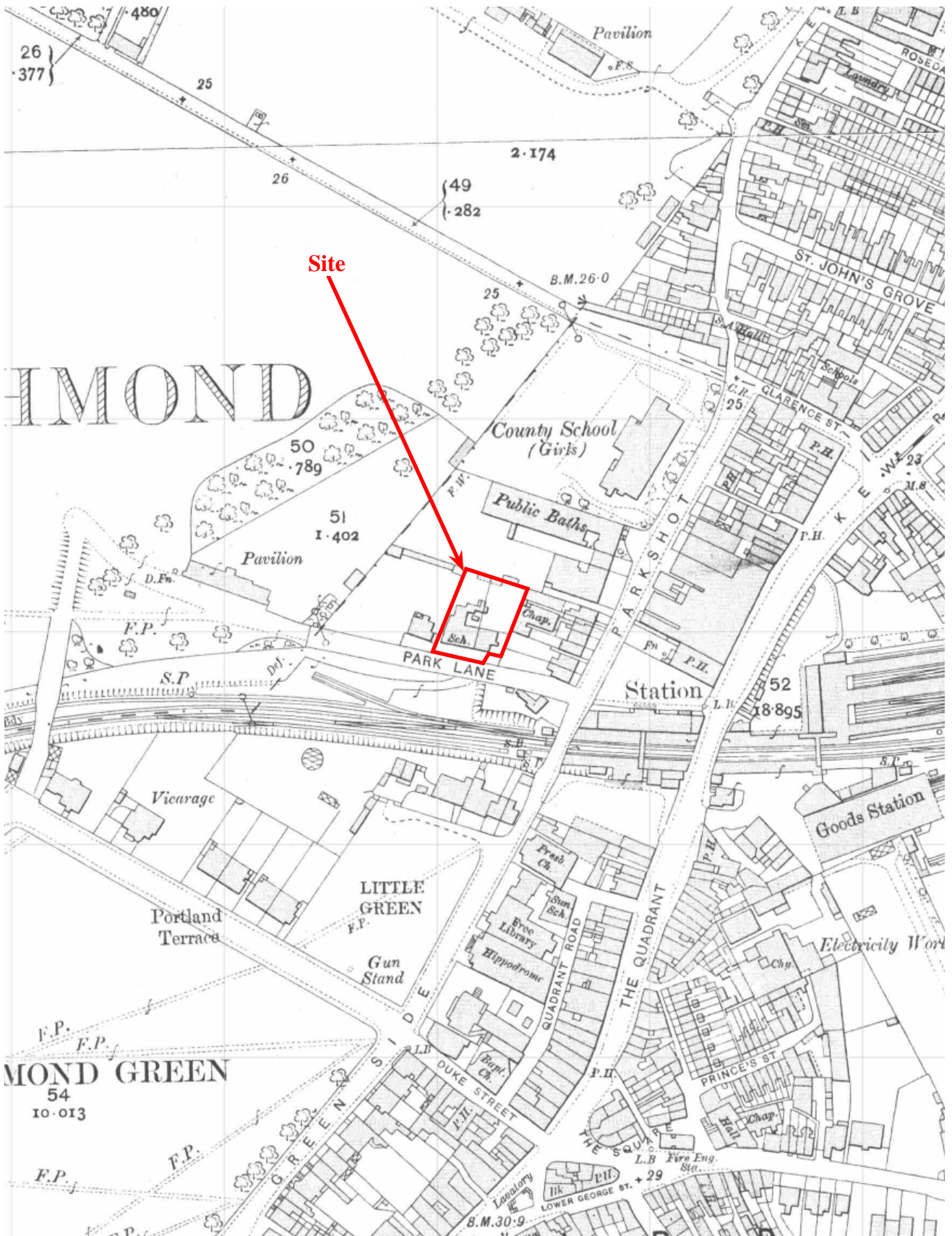


PLR 12/80a

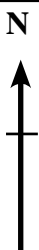


The Old School, Park Lane, Richmond,
 London Borough of Richmond, 2012
 Desk-based Heritage Assessment
 Figure 8. Ordnance Survey Second Edition, 1896.

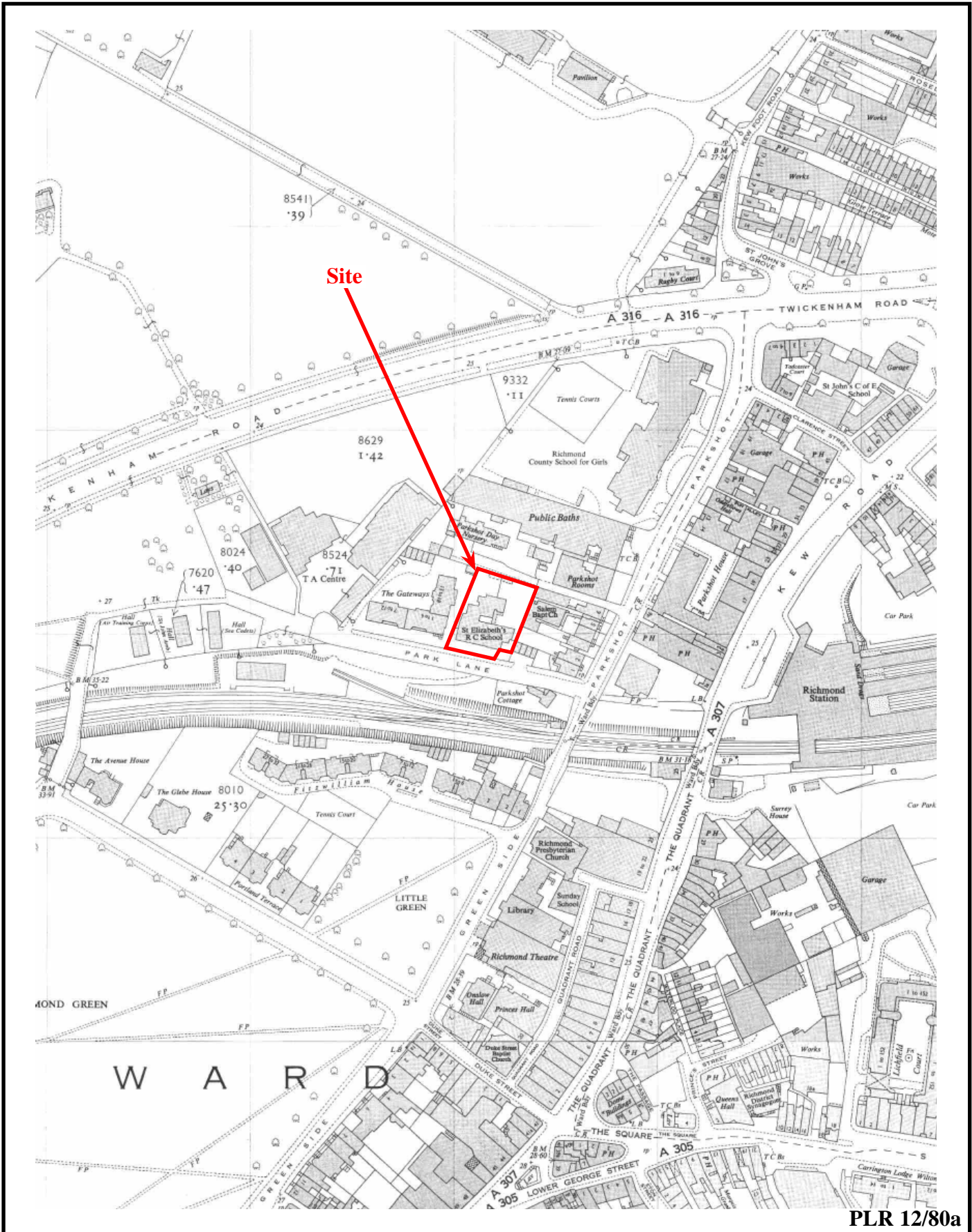




PLR 12/80a



**The Old School, Park Lane, Richmond,
London Borough of Richmond, 2012
Desk-based Heritage Assessment**
Figure 9. Ordnance Survey Third Edition, 1913.



PLR 12/80a



The Old School, Park Lane, Richmond,
 London Borough of Richmond, 2012
 Desk-based Heritage Assessment
 Figure 10. Ordnance Survey, 1959.





Plate 1. The front of the school buildings with garden area, looking east.



Plate 2. The entrance to the site and eastern end of the school buildings, looking north.



Plate 3. 1950s extension and surrounding playground/car park, looking west.



Plate 4. The school buildings with playground/car park in the foreground, looking south.

PLR 12/80a

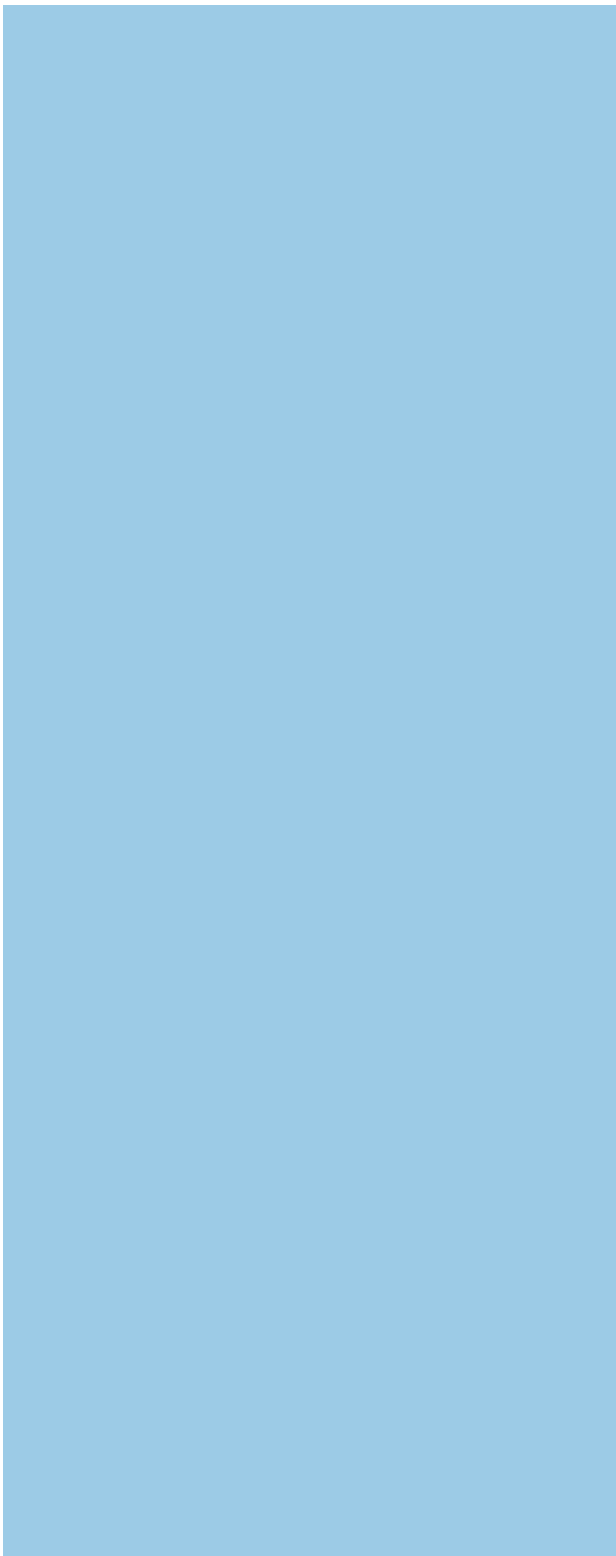
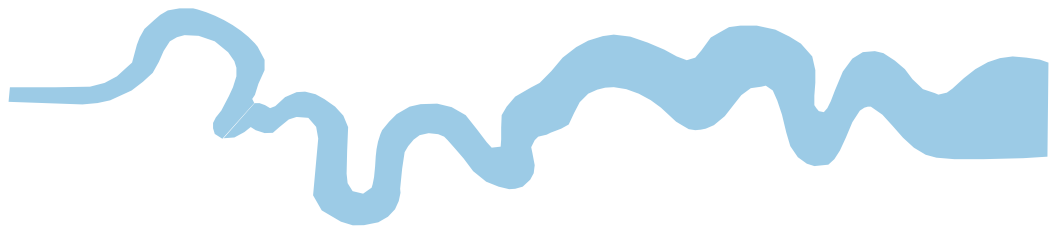
**The Old School, Park Lane, Richmond,
London Borough of Richmond, 2012
Desk-based Heritage Assessment**

Plates 1 to 4.

THAMES VALLEY
ARCHAEOLOGICAL
SERVICES

TIME CHART

| | Calendar Years |
|----------------------------|-----------------|
| Modern _____ | AD 1901 |
| Victorian _____ | AD 1837 |
| Post Medieval _____ | AD 1500 |
| Medieval _____ | AD 1066 |
| Saxon _____ | AD 410 |
| Roman _____ | AD 43 |
| Iron Age _____ | BC/AD 750 BC |
| | |
| Bronze Age: Late ----- | 1300 BC |
| Bronze Age: Middle ----- | 1700 BC |
| Bronze Age: Early ----- | 2100 BC |
| | |
| Neolithic: Late | 3300 BC |
| Neolithic: Early | 4300 BC |
| | |
| Mesolithic: Late | 6000 BC |
| Mesolithic: Early | 10000 BC |
| | |
| Palaeolithic: Upper | 30000 BC |
| Palaeolithic: Middle | 70000 BC |
| Palaeolithic: Lower | 2,000,000 BC |
| ↓ | ↓ |



**Thames Valley Archaeological Services Ltd,
47-49 De Beauvoir Road, Reading,
Berkshire, RG1 5NR**

**Tel: 0118 9260552
Fax: 0118 9260553
Email: tvas@tvas.co.uk
Web: www.tvas.co.uk**