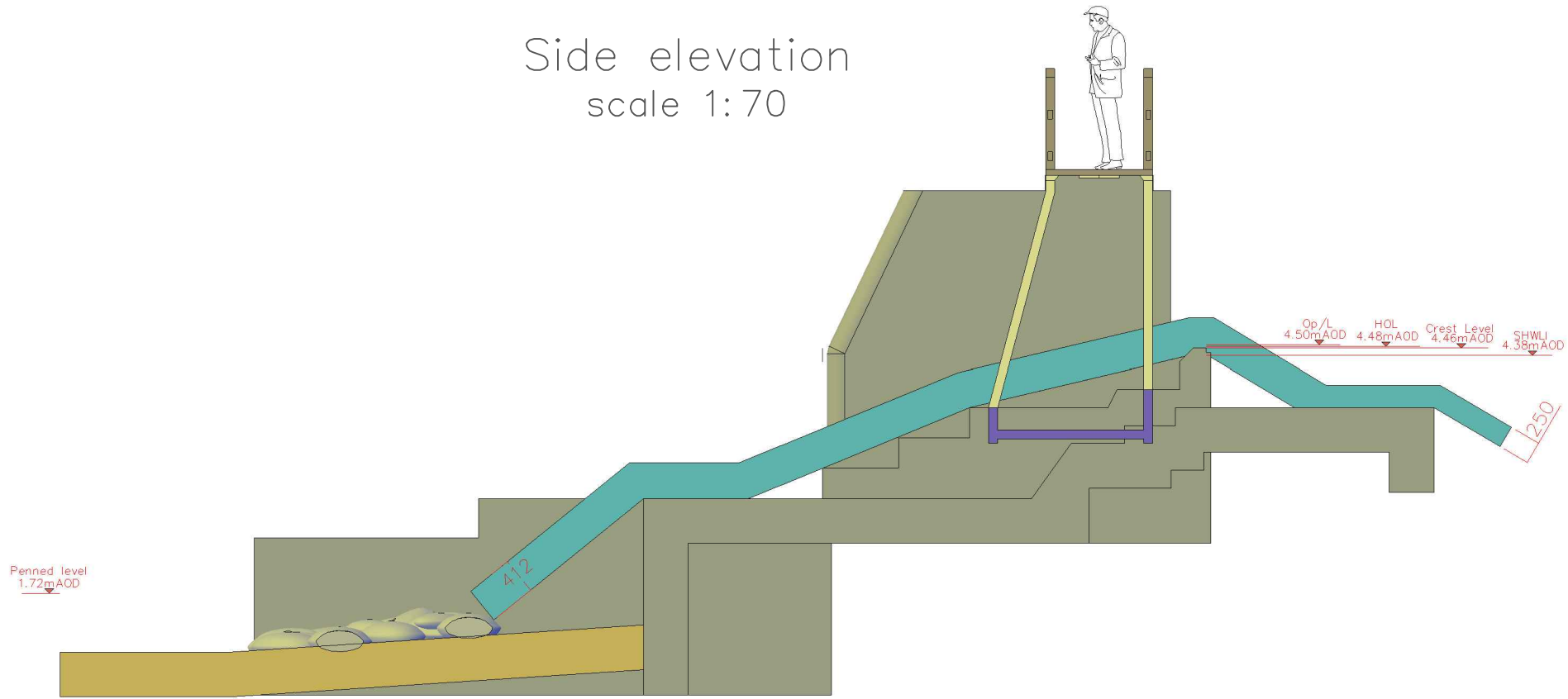
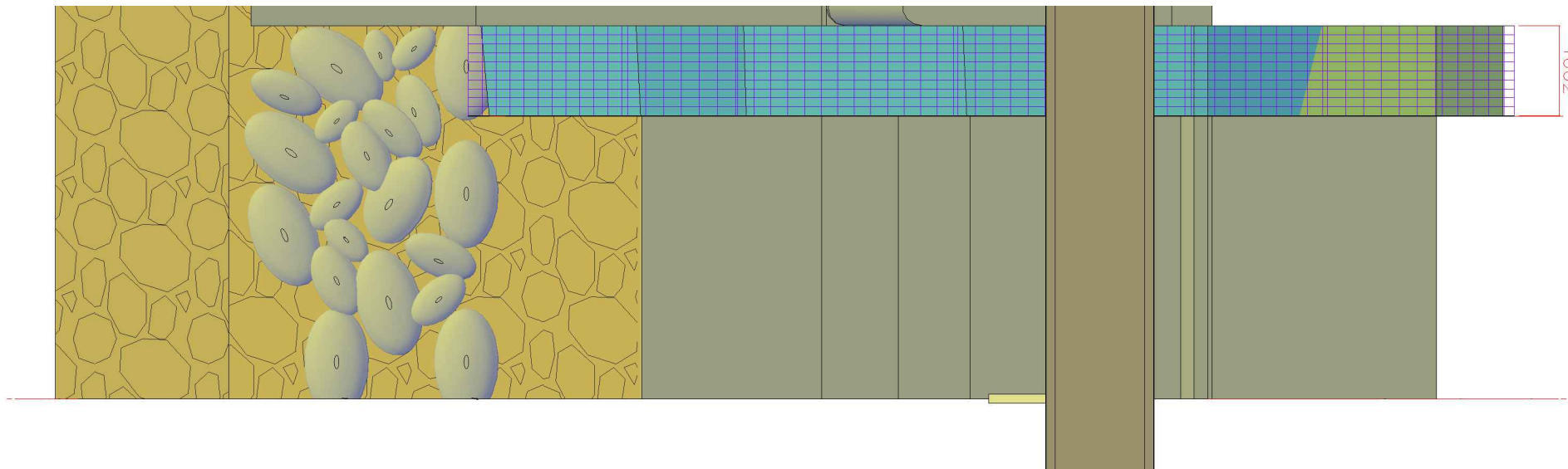


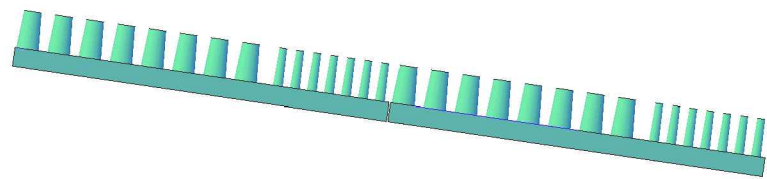
Side elevation
scale 1:70



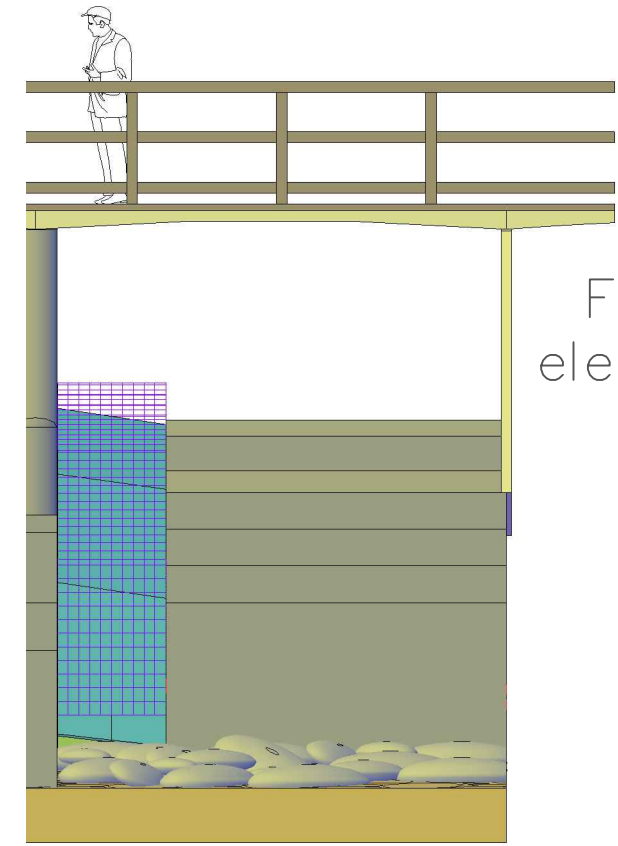
Plan view



End view (lateral elevation)




Front elevation



Eel Pass channel will be made of galvanised steel, plugged and screwed to vertical and level surfaces of weir complex. Rigidity of pass will be maintained by elephant grating screen above and will also aid in avoiding predation. Base of Eel Pass will be lined with Berry & Escott Eel Tiles, side by side (with smaller studs in the middle and at the lowest extremity) along the downstream side of the pass. As per end view of Eel tiles

ISSUED FOR: TEDDINGTON PLANNING PERMISSION

All measurements in millimetres,
all levels in mAOD

 eWaterpower Ltd.				
CLIENT NAME:	TEDDINGTON & HAM HYDRO			
JOB TITLE:	TEDDINGTON WEIR HYDROPOWER SCHEME			
DRAWING TITLE	EEL PASS DETAIL			
DRAWING NO	DWG-TW-EP1			
LAYOUT	A3	SCALE	1:70	
DRAWN BY	ST	CHECKED BY	BB	
DATE	08/01/2013			