



TEDDINGTON & HAM HYDRO PLANNING APPLICATION

13 Visual Impact

Contents

1 INTRODUCTION	1
2 LENSBUURY CLUB – Terrace	2
3 HAM BANK – Upstream	4
4 HAM BANK – Down stream	6
5 LENSBUURY CLUB – Close up	8
6 TEDDINGTON BRIDGE	10
7 CAMERA DETAILS	12

1 INTRODUCTION

This is the Visual Impact Document and is included as part of a suite of documents prepared in support of a Planning Application for the construction of a turbine to generate renewable energy on Teddington Weir. Using photographs taken using a lens as close to the human eye as possible we have superimposed our computer generated representations of our scheme on the existing structure. This will allow the planning committee and general public a sense of how the scheme may look once constructed from a series of key locations accessible to the public and to members of the Lensbury Club. In addition to this document, we have also provided individual high resolution version of each of these images as supporting documentation to this application. The file names of these images are in brackets. Please note, these are not verified views.





2 LENSBURY CLUB – Terrace

Before – Standard View (HH_020_00_Lensbury 2)



After – Standard View (HH_020_71_Lensbury 2)





Camera Location





3 HAM BANK – Upstream

Before – Panoramic (HH_031_00_Ham River Bank 1_Pano)



After – Panoramic (HH_031_71_Ham River Bank 1_Pano)



Before – Standard View (HH_030_00_Ham River Bank 1)





After – Standard View HH_030_71_Ham River Bank 1)



Camera Location





4 HAM BANK – Down stream

Before – Panoramic (HH_041_00_Ham River Bank 2_Pano)



After – Panoramic (HH_041_71_Ham River Bank 2_Pano)



Before – Standard View (HH_040_00_Ham River Bank 2)





After – Panoramic (HH_040_71_Ham River Bank 2)



Camera Location





5 LENSBRURY CLUB – Close up

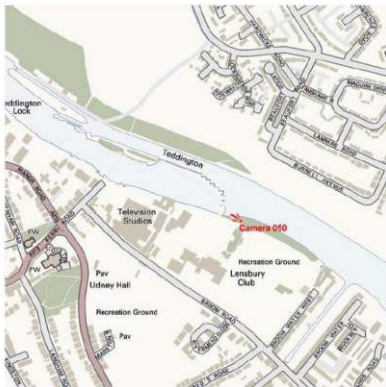
Before – Standard View (HH_050_00_Lensbury01)



After – Standard View (HH_050_71_Lensbury01)



Camera Location





6 TEDDINGTON BRIDGE

Before – Panoramic (HH_061_00_Teddington Bridge_Pano)



After – Panoramic (HH_061_71_Teddington Bridge_Pano)



Before – Standard View (HH_060_00_Teddington Bridge)

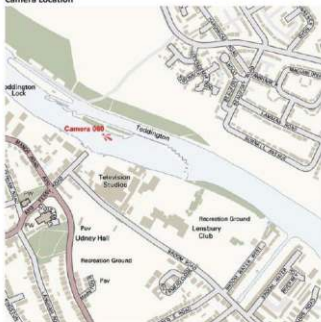




After – Standard View (HH_060_71_Teddington Bridge)



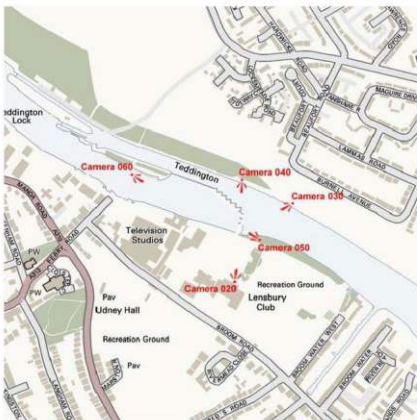
Camera Location





7 CAMERA DETAILS

Camera Name	Lens	Time	Date
HH_020_Lensbury 2	~35 mm	12:12	19/09/2012
HH_030_Ham	50 mm	09:30	17/09/2013
Riverbank 1			
HH_040_Ham	50 mm	10:06	17/09/2013
Riverbank 2			
HH_050_Lensbury 1	50 mm	12:46	06/06/2014
HH_060_Teddington	50 mm	10:41	
Bridge			





Stephen Jarvis, Managing Director – Teddington and Ham Hydro Cooperative Limited
London, 1st September, 2014





TEDDINGTON & HAM HYDRO PLANNING APPLICATION

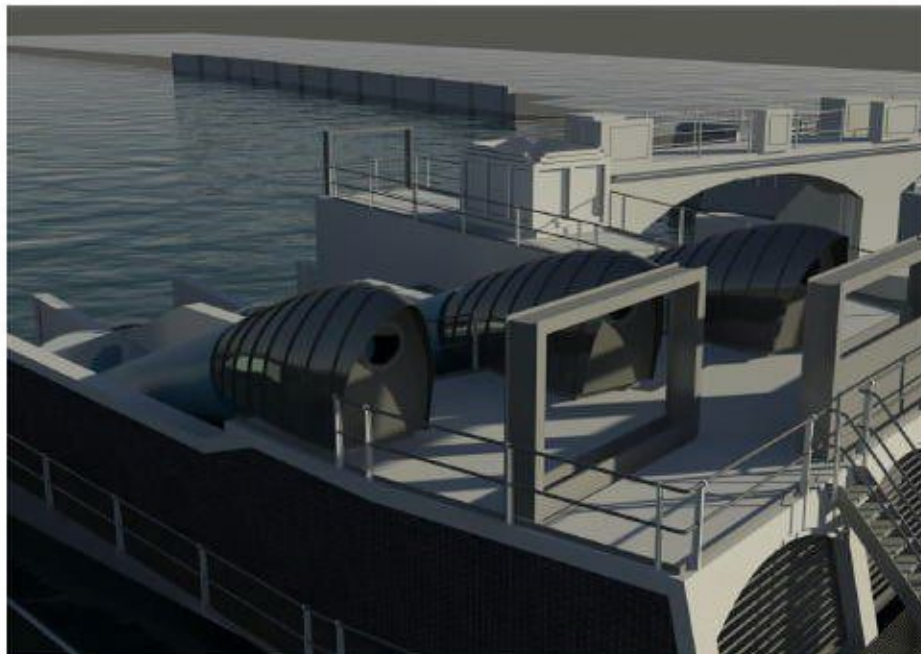
13 Visual Impact

Contents

1 INTRODUCTION.....	1
2 LENSBUURY CLUB – Terrace	2
3 HAM BANK – Upstream	4
4 HAM BANK – Down stream.....	6
5 LENSBUURY CLUB – Close up.....	8
6 TEDDINGTON BRIDGE	10
7 CAMERA DETAILS	12

1 INTRODUCTION

This is the Visual Impact Document and is included as part of a suite of documents prepared in support of a Planning Application for the construction of a turbine to generate renewable energy on Teddington Weir. Using photographs taken using a lens as close to the human eye as possible we have superimposed our computer generated representations of our scheme on the existing structure. This will allow the planning committee and general public a sense of how the scheme may look once constructed from a series of key locations accessible to the public and to members of the Lensbury Club. In addition to this document, we have also provided individual high resolution version of each of these images as supporting documentation to this application. The file names of these images are in brackets. Please note, these are not verified views.



2 LENSURRY CLUB – Terrace

Before – Standard View (HH_020_00_Lensbury 2)



After – Standard View (HH_020_71_Lensbury 2)



Camera Location



3 HAM BANK – Upstream

Before – Panoramic (HH_031_00_Ham River Bank 1_Pano)



After – Panoramic (HH_031_71_Ham River Bank 1_Pano)



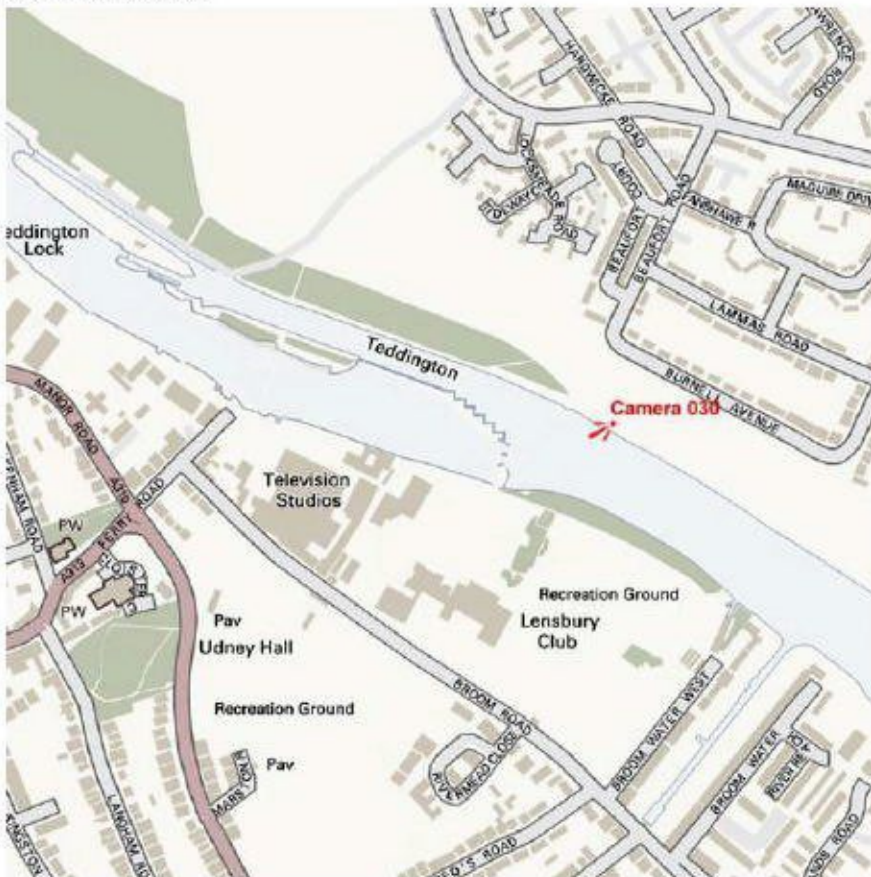
Before – Standard View (HH_030_00_Ham River Bank 1)



After – Standard View HH_030_71_Ham River Bank 1)



Camera Location



4 HAM BANK – Down stream

Before – Panoramic (HH_041_00_Ham River Bank 2_Pano)



After – Panoramic (HH_041_71_Ham River Bank 2_Pano)



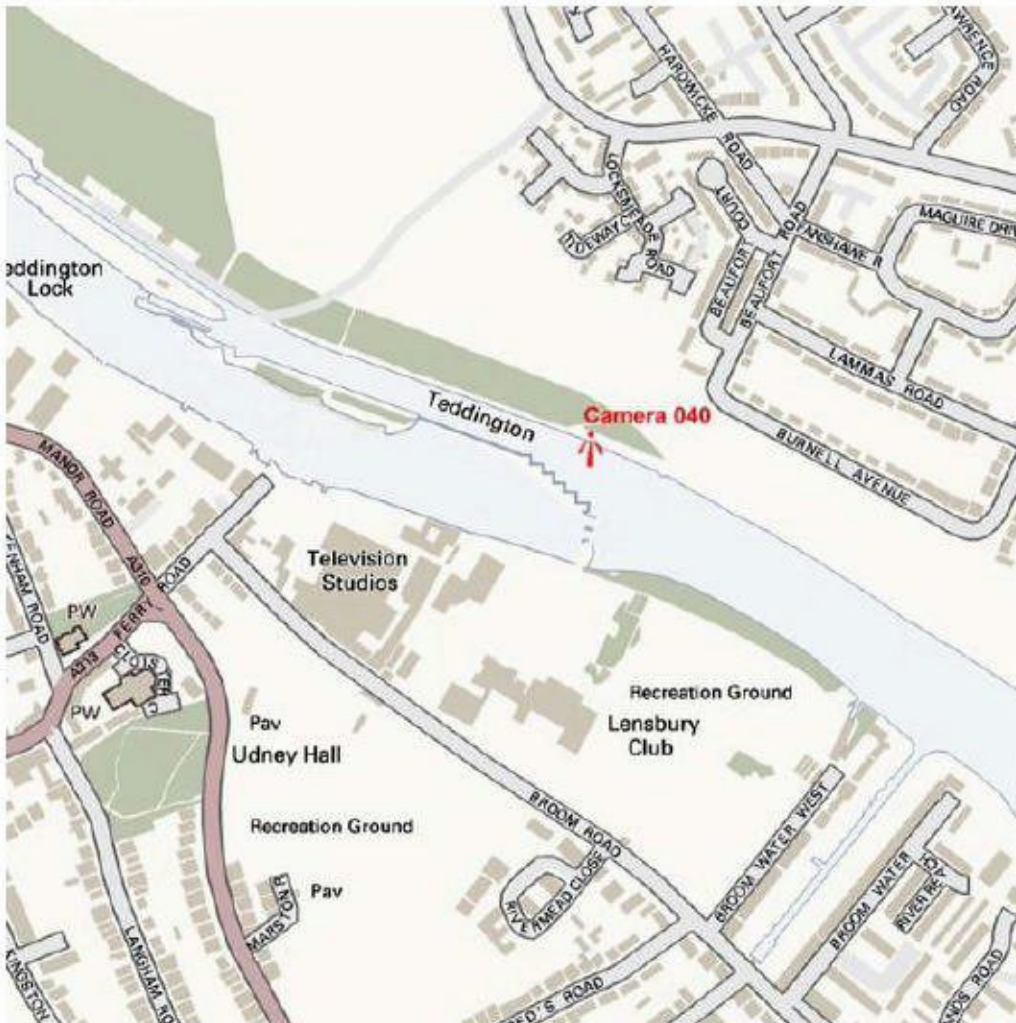
Before – Standard View (HH_040_00_Ham River Bank 2)



After – Panoramic (HH_040_71_Ham River Bank 2)



Camera Location



5 LENSURY CLUB – Close up

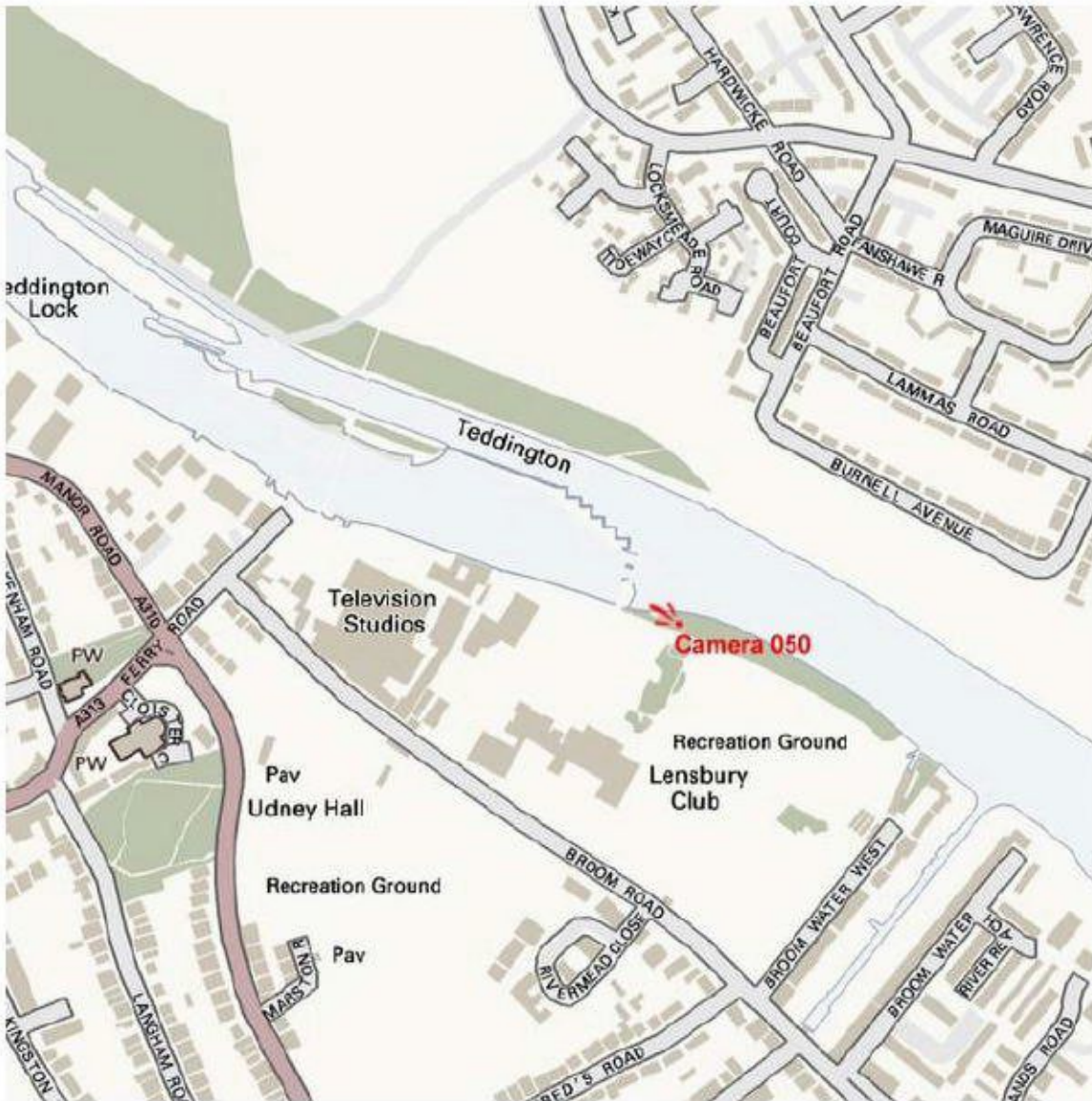
Before – Standard View (HH_050_00_Lensbury01)



After – Standard View (HH_050_71_Lensbury01)



Camera Location



6 TEDDINGTON BRIDGE

Before – Panoramic (HH_061_00_Teddington Bridge_Pano)



After – Panoramic (HH_061_71_Teddington Bridge_Pano)



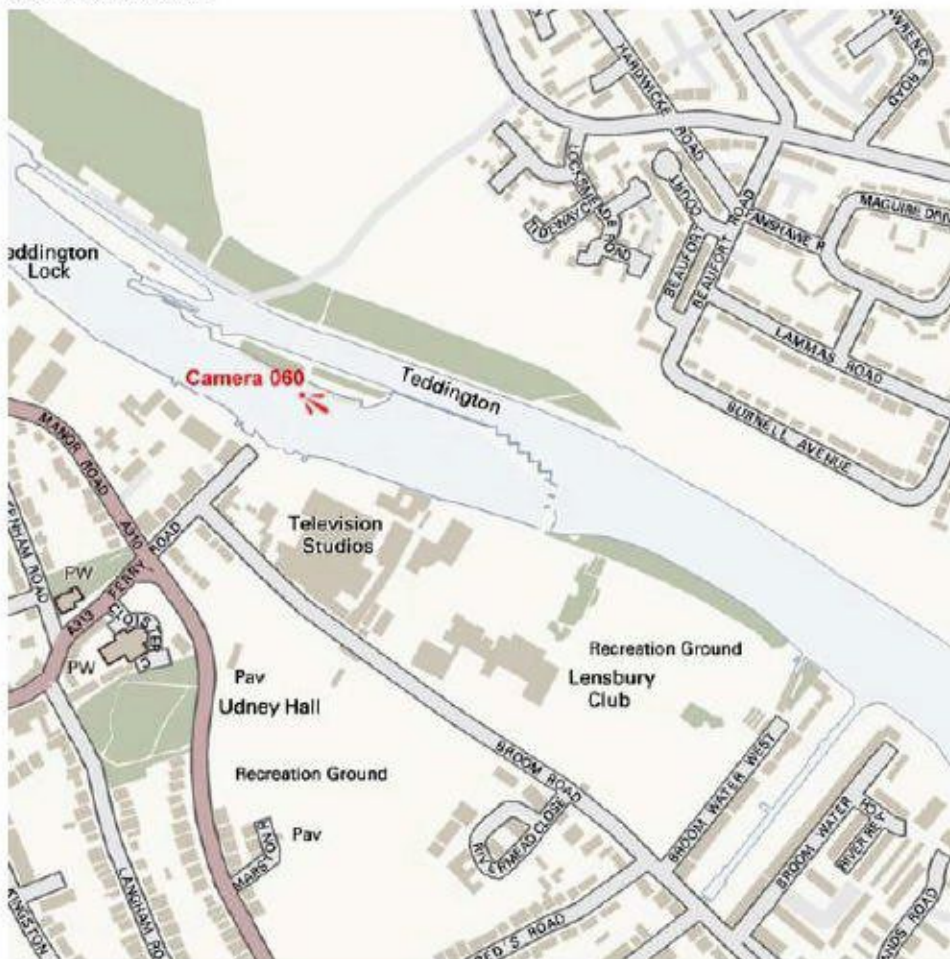
Before – Standard View (HH_060_00_Teddington Bridge)



After – Standard View (HH_060_71_ Teddington Bridge)

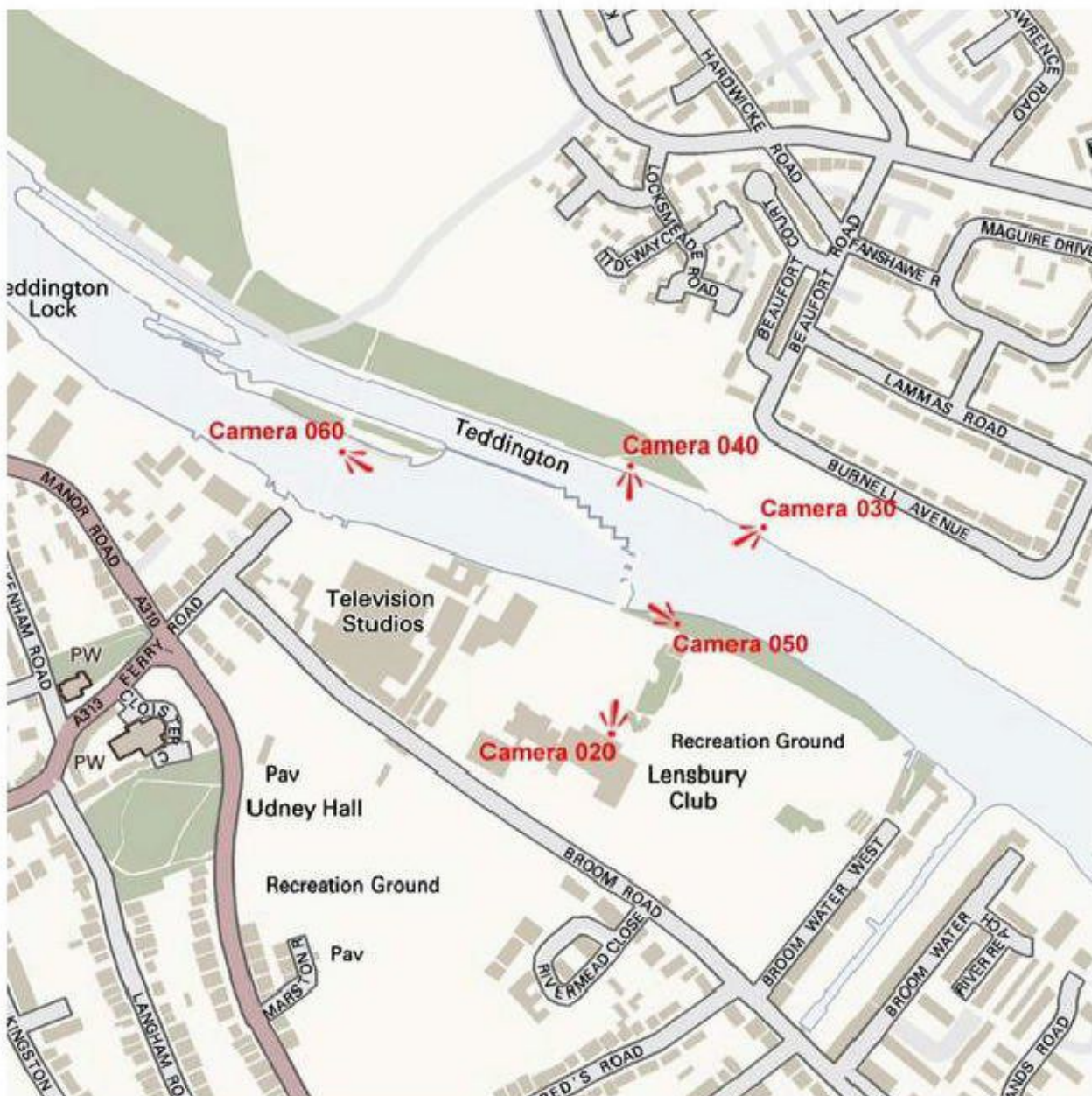


Camera Location



7 CAMERA DETAILS

Camera Name	Lens	Time	Date
HH_020_Lensbury 2	~35 mm	12:12	19/09/2012
HH_030_Ham	50 mm	09:30	17/09/2013
Riverbank 1			
HH_040_Ham	50 mm	10:06	17/09/2013
Riverbank 2			
HH_050_Lensbury 1	50 mm	12:46	06/06/2014
HH_060_Teddington	50 mm	10:41	17/09/2013
Bridge			





Stephen Jarvis, Managing Director – Teddington and Ham Hydro Cooperative Limited
London, 1st September, 2014

