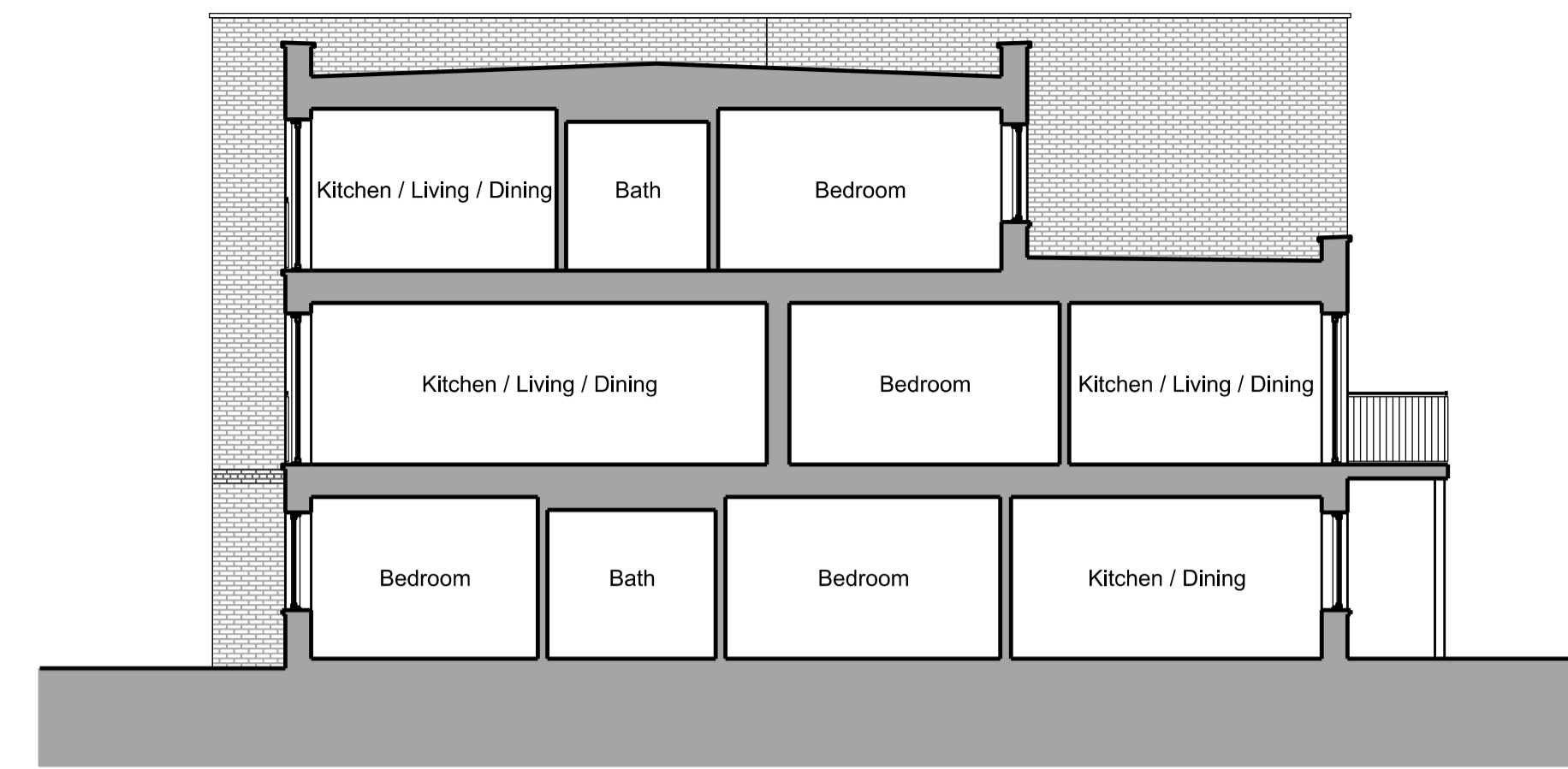


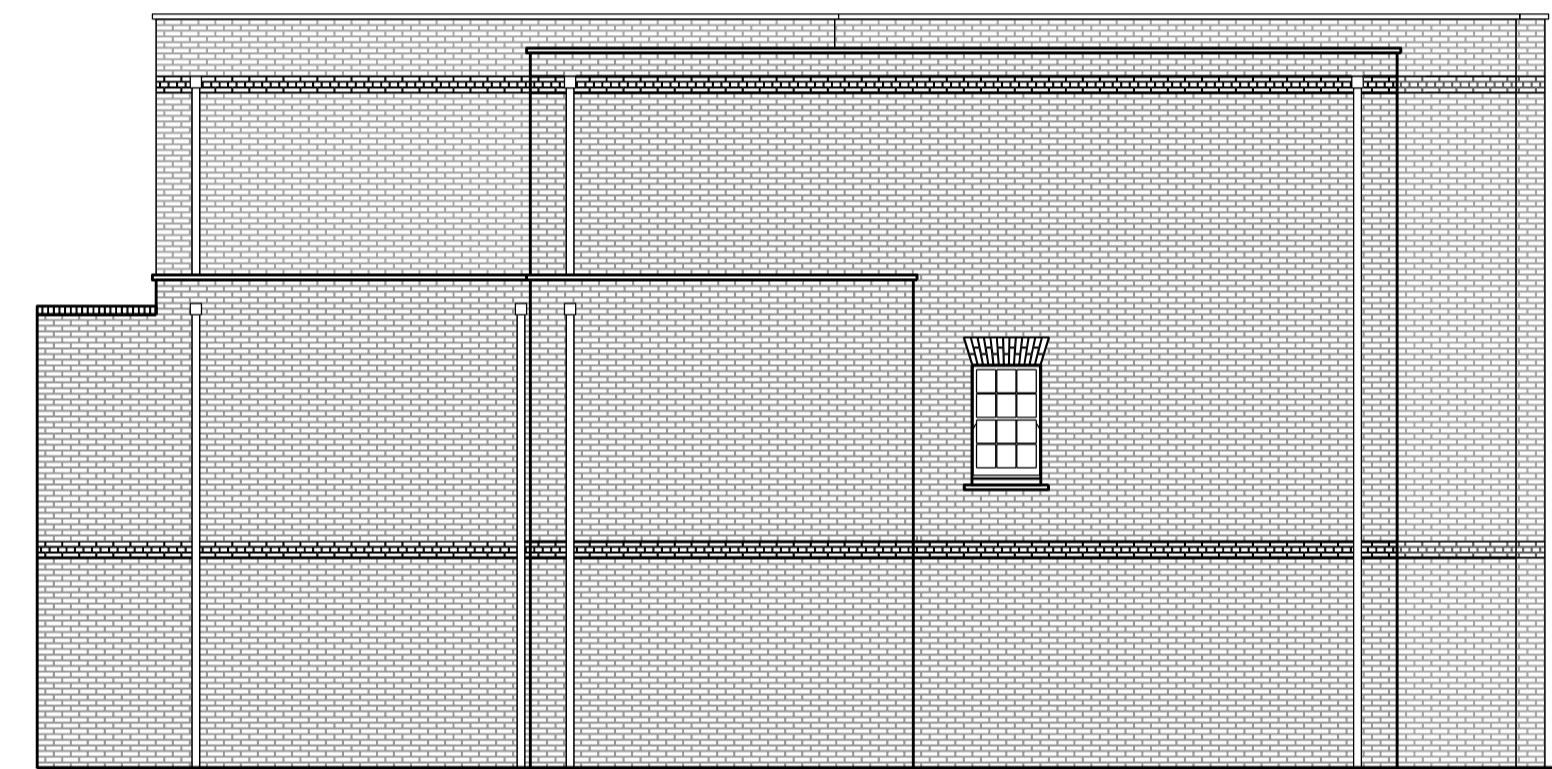
05 Section B-B
SCALE 1:100



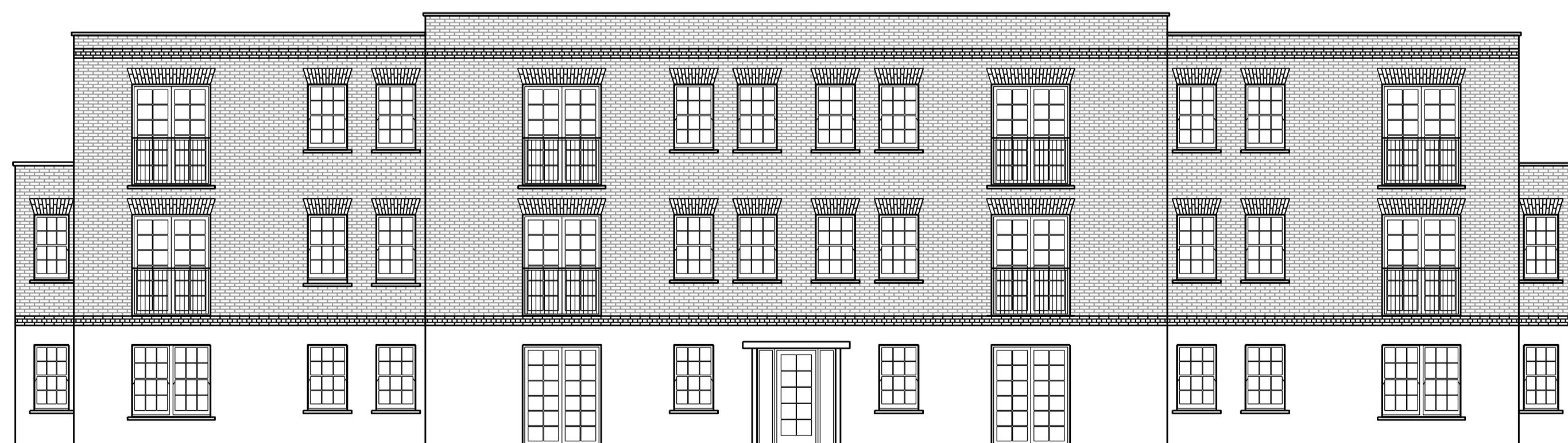
06 Section A-A
SCALE 1:100



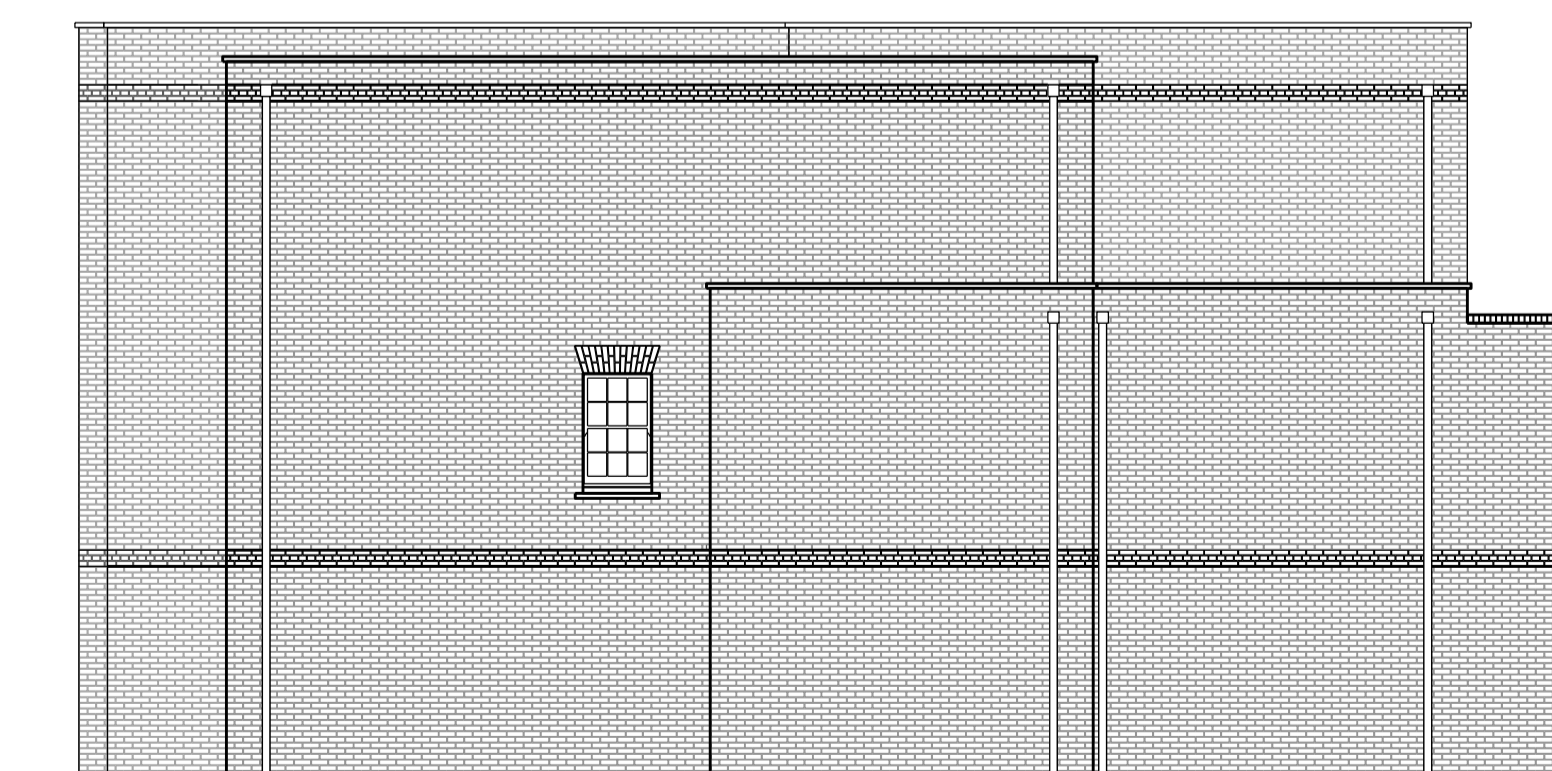
03 Rear (West) Elevation
SCALE 1:100



04 Side (South) Elevation
SCALE 1:100



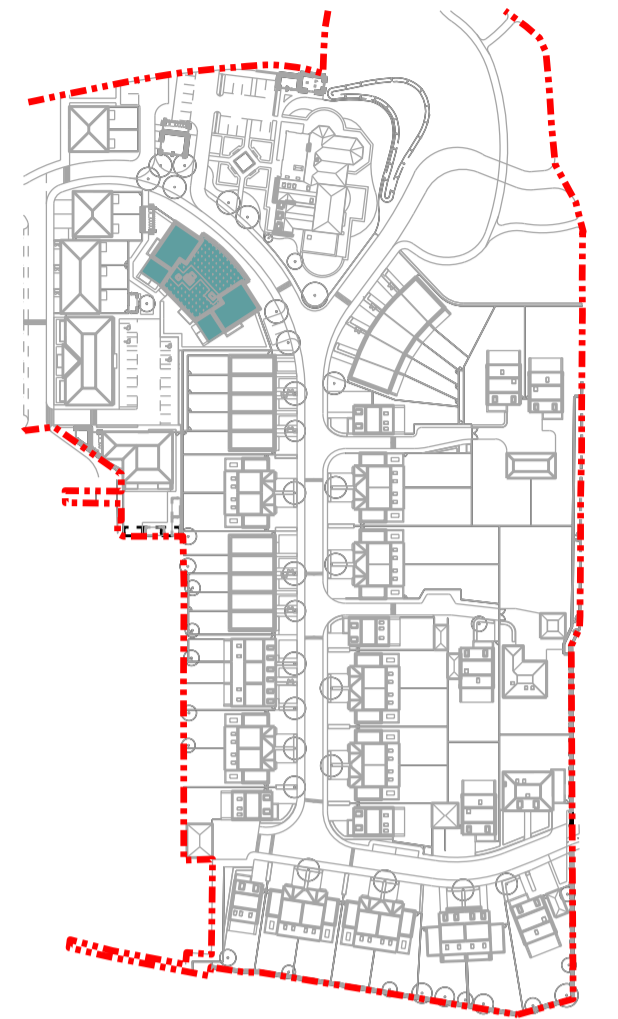
01 Front (East) Elevation
SCALE 1:100



02 Side (North) Elevation
SCALE 1:100

General Notes:
Do not scale from this drawing. Use marked dimensions.
Should any discrepancies be noted, please inform this office.
This drawing is copyright of Matthew Alchurch Architects Limited

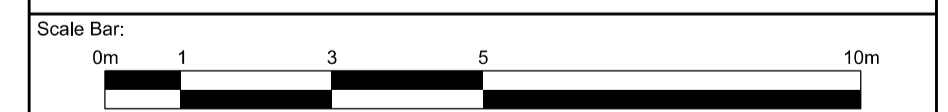
Key Plan



Project Note:
The internal layouts within residential apartments, houses and ancillary areas of buildings will be subject to design development.
The precise locations of wall, internal doors, columns, risers and the detailed layouts of bathroom and kitchen areas will be the subject of non-material changes and may vary from the internal layouts set out in these plans.
These minor alterations will not affect the position and arrangements of external doors and windows nor will they affect the relative relationship between habitable rooms and windows.
All materials shown or highlighted are indicative only and may be subject to changes made during the detailed design development.

02	Layouts for Block and elevation amended.	25/07/14	RW	GS
01	Layouts for Block amended to allow for entrance from the front of block	17/07/14	RW	GS
00	Issued for information	20/12/13	RW	GS
Rev:	Description:	Date	Drn by:	Ckd by:

MAA Architects
the boathouse design studio
27 ferry road teddington tw11 9nn
t: 020 8973 0050
e: info@maa-architects.com
w: www.maa-architects.com



Client:
Berkeley Homes (Central London) Ltd
Project Name:
Latchmere House Scheme 2

Drawing Title:
Affordable Block B Elevations and Sections

Project No:	Drawing No:	Revision:	Scale:	Date:
BKH06	P_216	02	1:100 @ A1	Oct 2013
Drawn by:	Checked by:	Drawing Status:		
J1	GS	Planning		