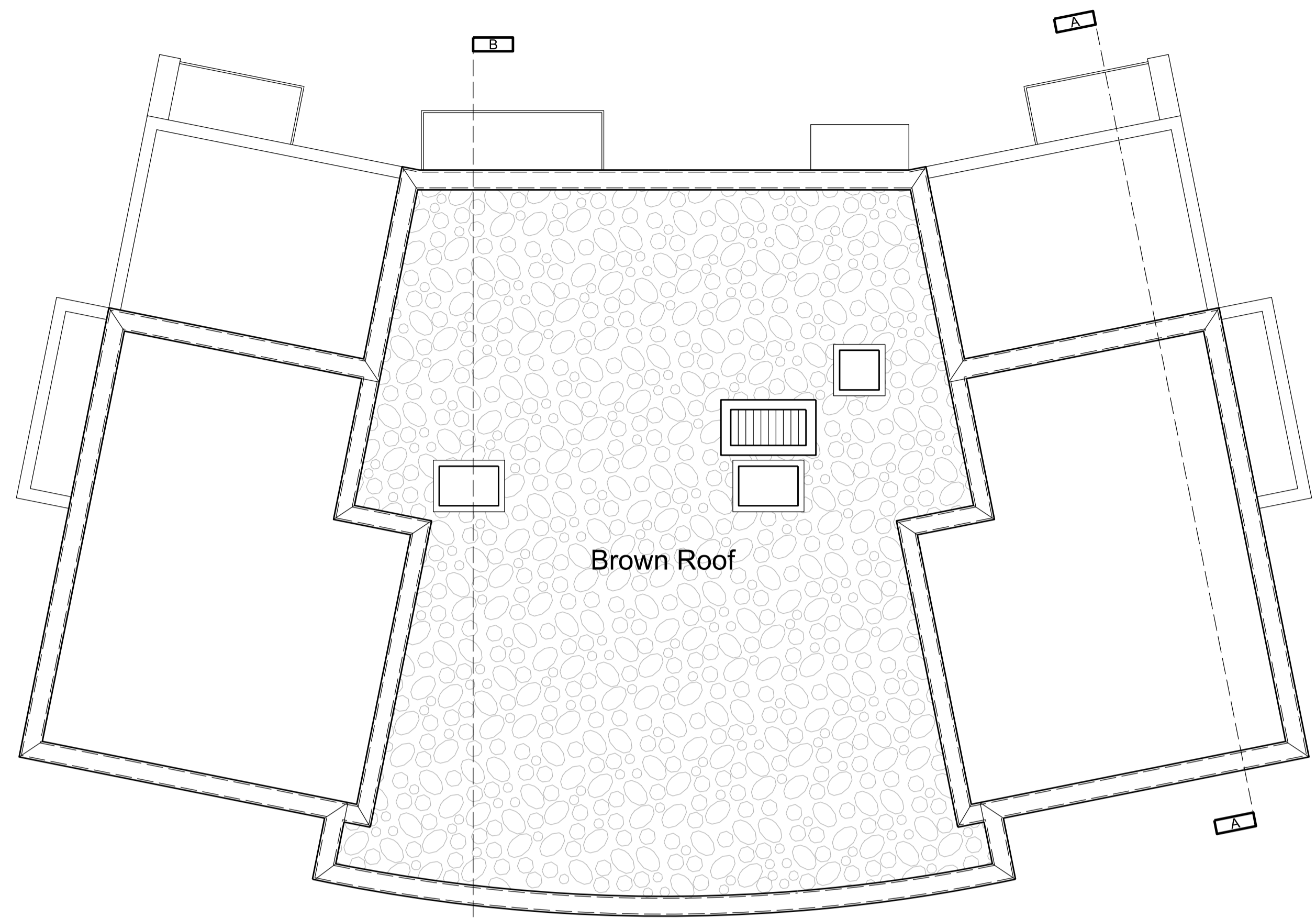
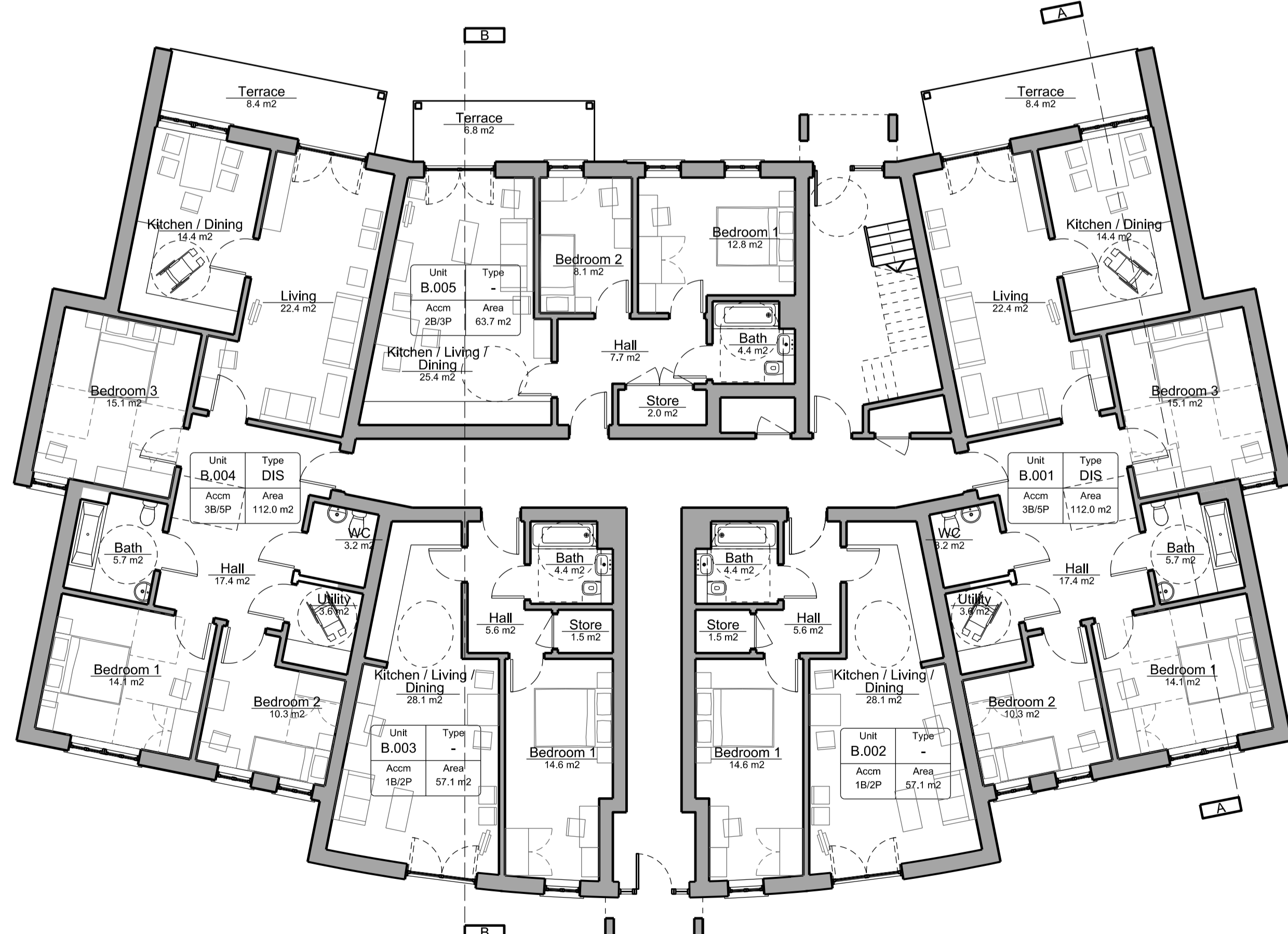


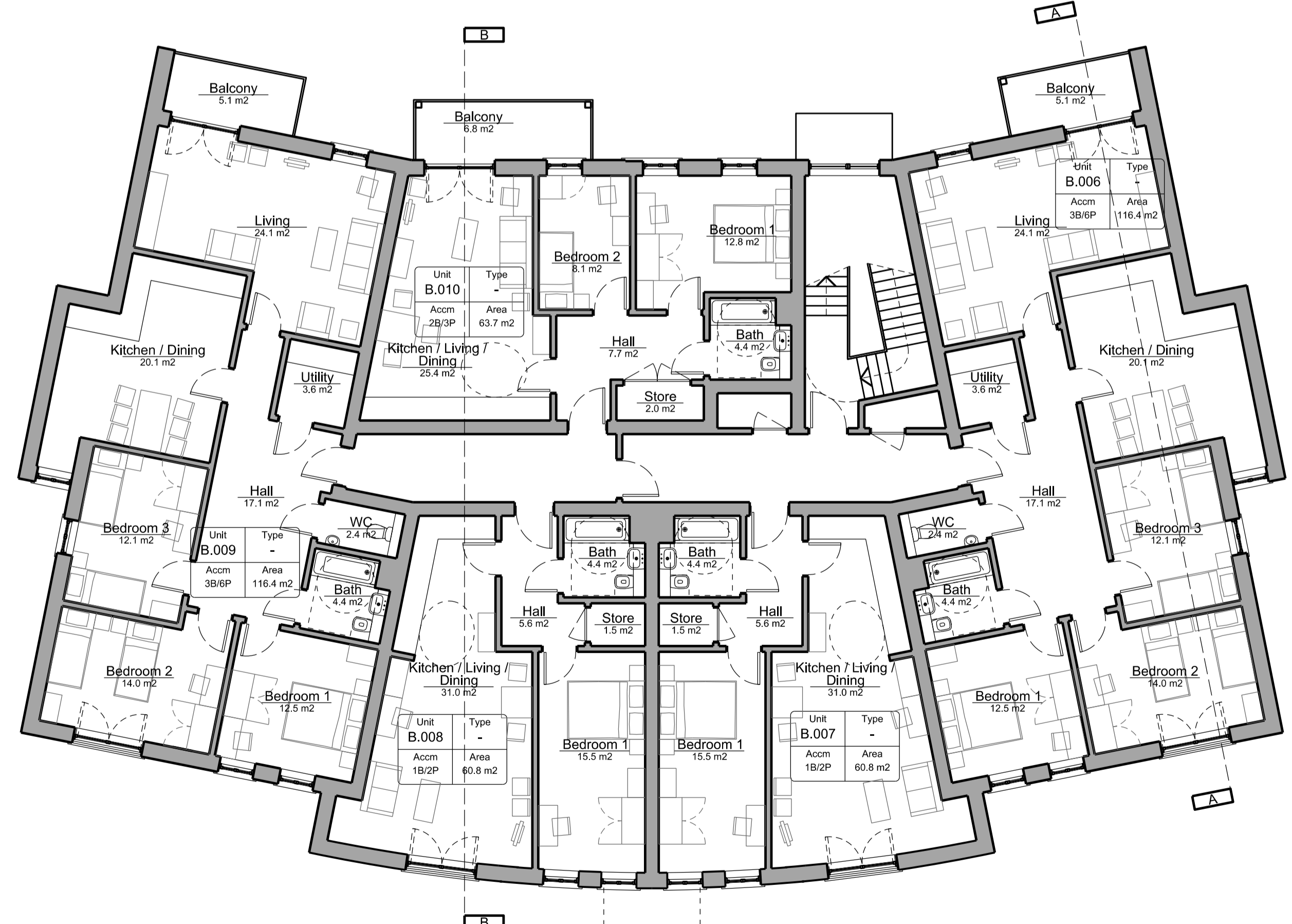
03 Second Floor Plan
SCALE: 1:100



04 Roof Plan
SCALE: 1:100

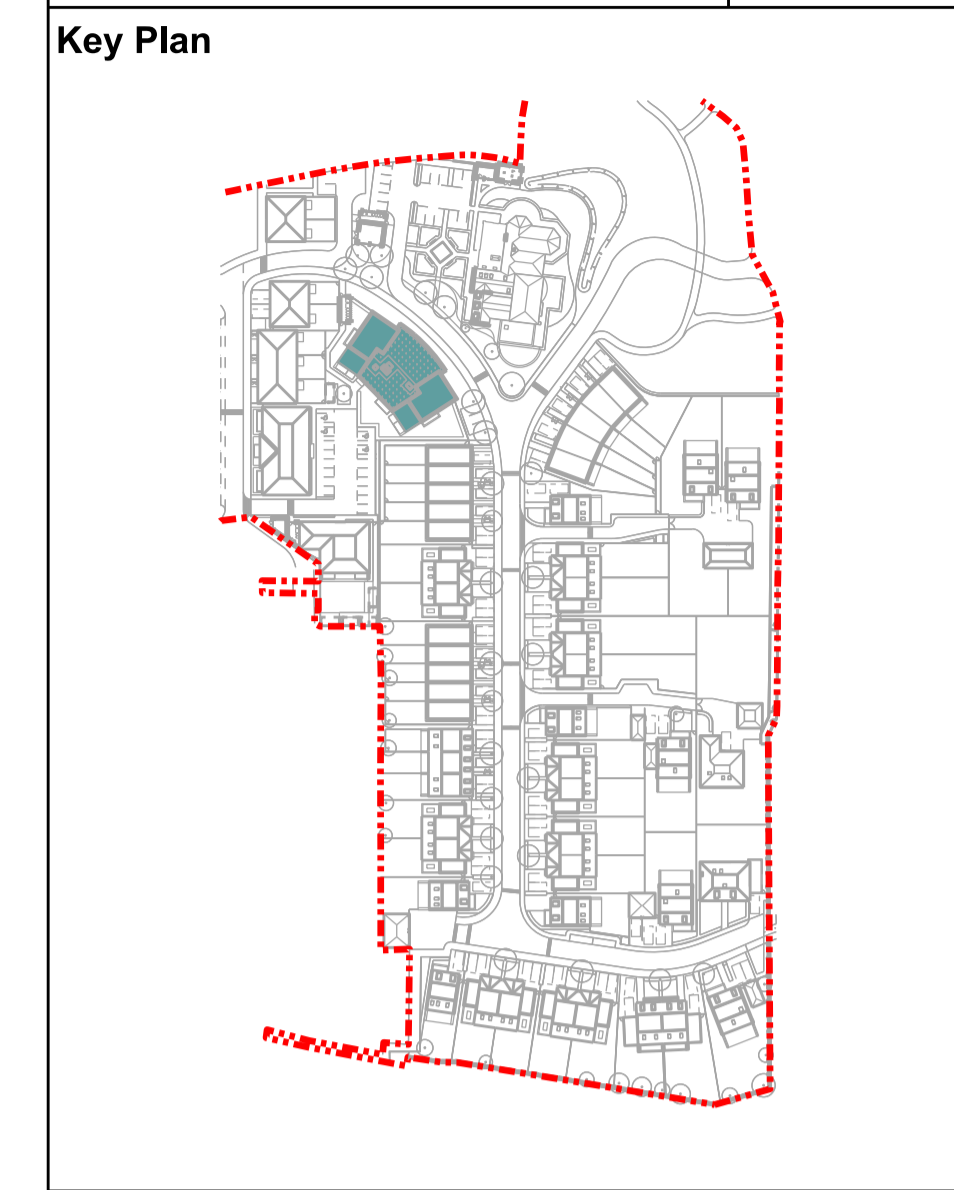


01 Ground Floor Plan
SCALE: 1:100



02 First Floor Plan
SCALE: 1:100

General Notes:
Do not scale from this drawing. Use marked dimensions.
Should any discrepancies be noted, please inform this office.
This drawing is copyright of Matthew Alchurch Architects Limited



Project Note:
The internal layouts within residential apartments, houses and ancillary areas of buildings will be subject to design development.
The precise locations of wall, internal doors, columns, risers and the detailed layouts of bathroom and kitchen areas will be the subject of non-material changes and may vary from the internal layouts set out in these plans.
These minor alterations will not affect the position and arrangements of external doors and windows nor will they affect the relative relationship between habitable rooms and windows.
All materials shown or highlighted are indicative only and may be subject to changes made during the detailed design development.

03	Layouts for Block and elevation amended.	25/07/14	RW	GS
02	Layouts for Block amended to allow for entrance from the front of the building.	17/07/14	RW	GS
01	Minor amendments - Ground floor wheelchair accessible units highlighted by type. Rooflight added.	12/06/14	RW	GS
00	Issues for Planning	20/12/13	RW	GS
Rev:	Description:	Date	Drn by:	Ckd by:

the boathouse design studio
27 ferry road teddington tw11 9nn
t: 020 8973 0050
e: info@maa-architects.com
w: www.maa-architects.com



Client: **Berkeley Homes (Central London) Ltd**

Project Name: **Latchmere House Scheme 2**

Drawing Title: **Affordable Block B Floor Plans**

Project No:	Drawing No:	Revision:	Scale:	Date:
BKH06	P_215	03	1:100 @ A1	Oct 2013
Drawn by:	Checked by:	Drawing Status:		
JJ	GS	Planning		