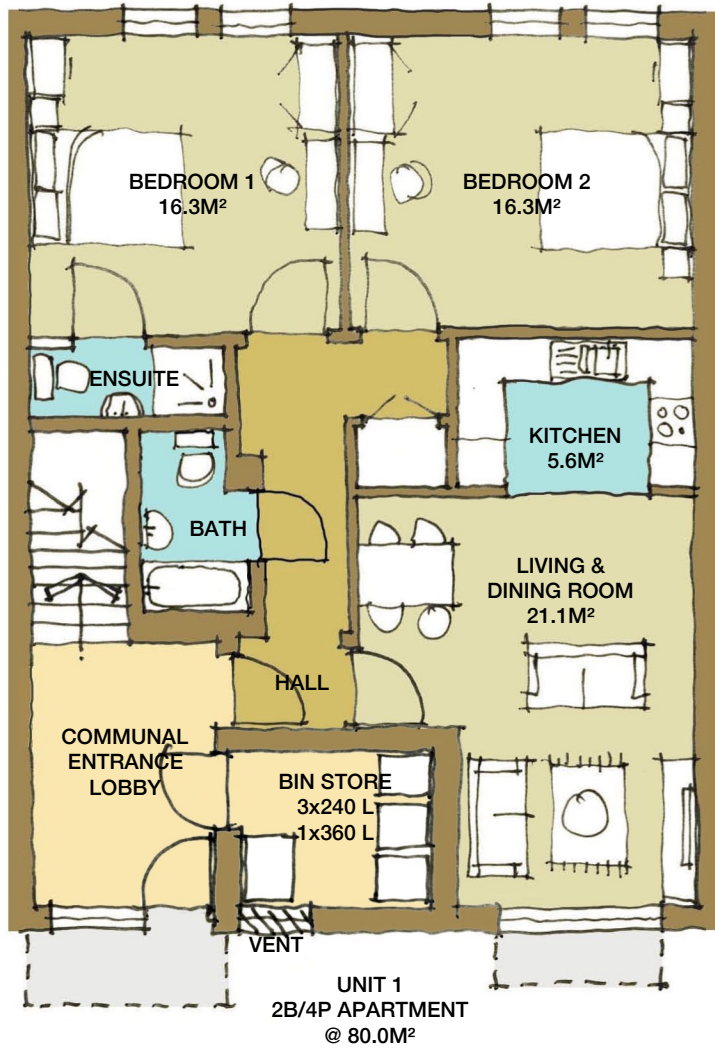


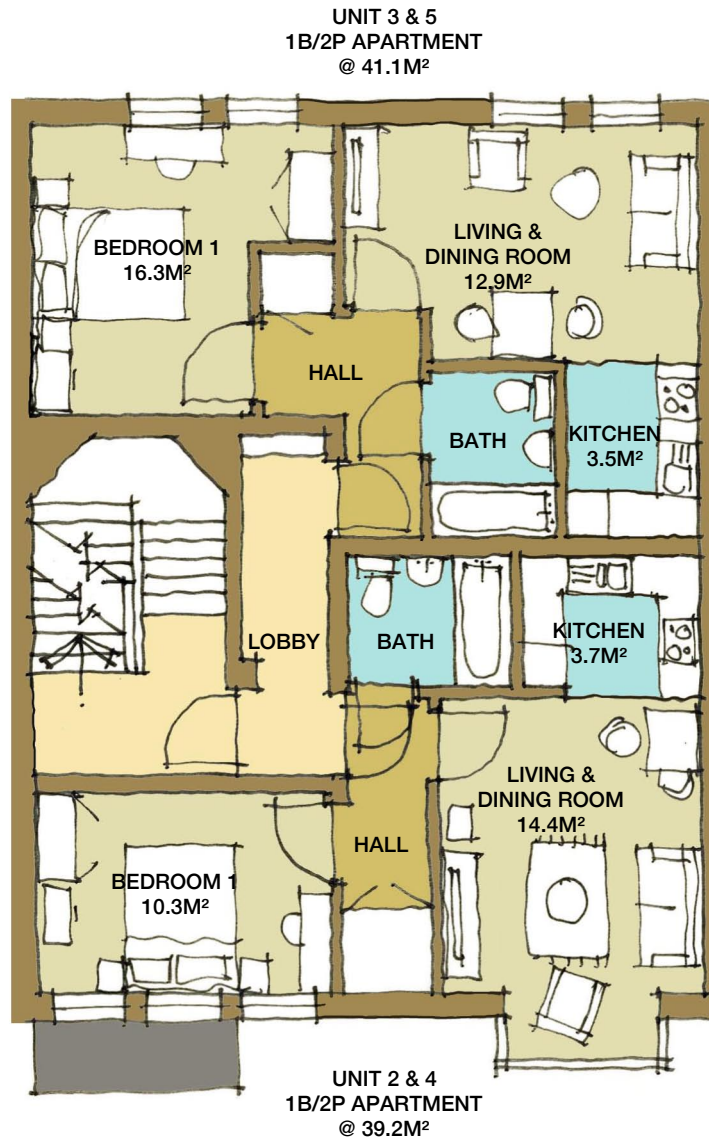
PROPOSED FLOOR PLANS

ACCOMMODATION SCHEDULE

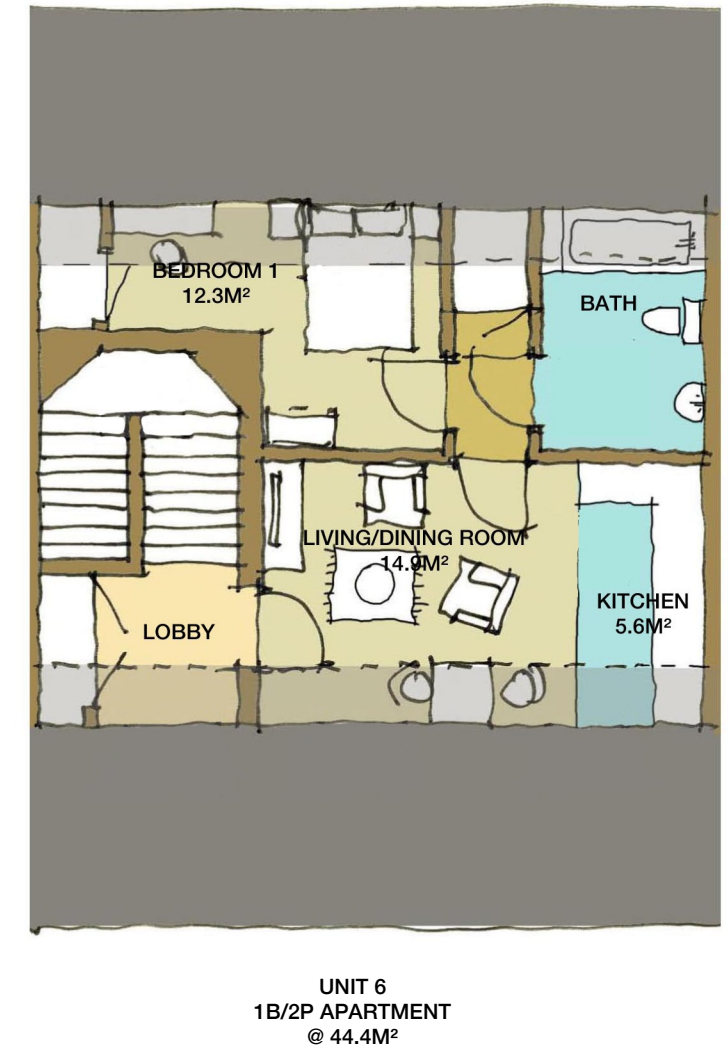
- UNIT 1 - 2B/4P APARTMENT @ 80.0M²
- UNIT 2 & 4 - 1B/2P APARTMENT @ 39.2M²
- UNIT 3 & 5 - 1B/2P APARTMENT @ 41.1M²
- UNIT 6 - 1B/2P APARTMENT @ 44.4M²



GROUND FLOOR



FIRST & SECOND FLOORS



THIRD FLOOR - ROOF PLAN



- Revisions
- <<A>> 14.11.14 Bin store added to ground floor.
 - <> 19.11.14 Velux windows removed.