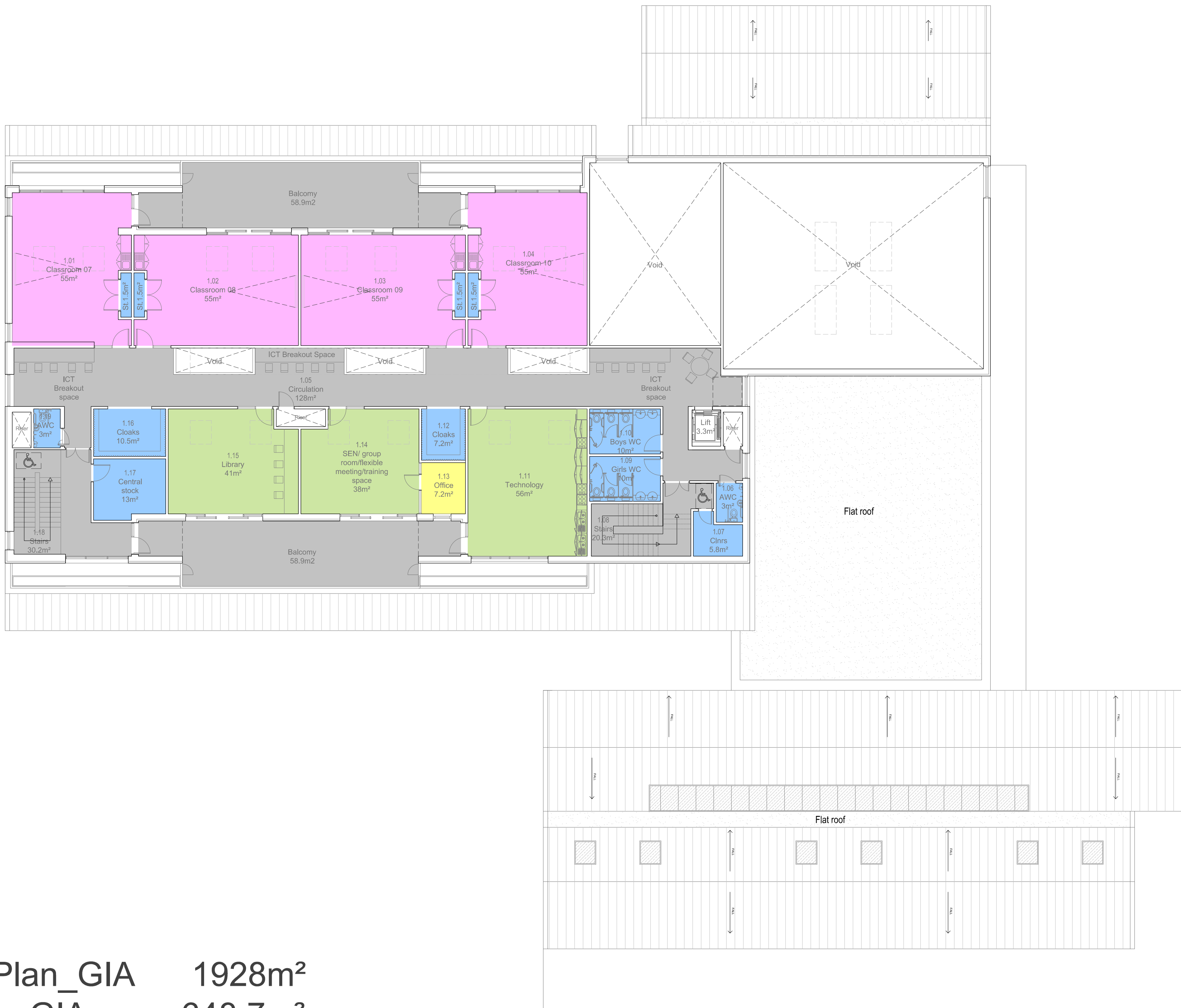


100  
Millimetres  
0 10



Ground Floor Plan\_GIA 1928m<sup>2</sup>  
First Floor Plan\_GIA 648.7m<sup>2</sup>

TOTAL GIA 2576.7m<sup>2</sup>

### SAFETY, HEALTH AND ENVIRONMENTAL INFORMATION

In addition to the hazards/risks normally associated with the types of work detailed on this drawing, note the following:

#### CONSTRUCTION

#### MAINTENANCE/CLEANING

#### DECOMMISSIONING/DEMOLITION

It is assumed that all works will be carried out by a competent contractor working, where appropriate, to an approved method statement

- Classrooms
- Halls, Library, ICT, Group Rooms
- Reception, Staff & Offices
- Storages Cloakrooms, WCs
- Circulation

PL-1	11/28/14	Issued for Planning	DV	JH	RC
Rev.	Date	Description	By	Chkd	App'd

Drawing Status	For Planning	Suitability
----------------	--------------	-------------

**ATKINS**

Woodcote Grove,  
Ashley Road,  
Epsom,  
Surrey KT18 5BW  
England  
Tel: +44 (0)1372 726140  
Fax: +44 (0)1372 740055  
www.atkinsglobal.com

Client

Project Title  
THE RUSSELL & STRATHMORE SCHOOLS

Drawing Title  
PROPOSED FIRST FLOOR PLAN

Scale	Designed	Drawn	Checked	Authorised
1:150@A1	JH	DV	JH	RC
Original Size	Date	Date	Date	Date
A1	NOV 14	NOV 14	NOV 14	NOV 14

Drawing Number	Revision
5127940-ATK-Z1-FF-DR-A-4211	PL-1