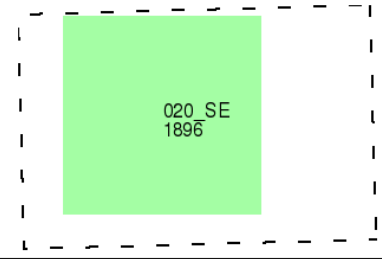


# SOILTECHNICS

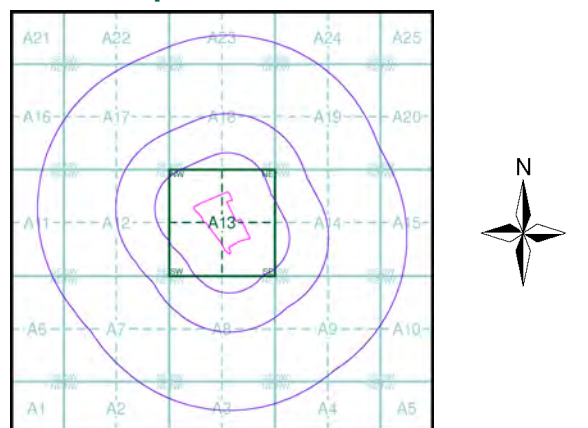
**Middlesex**  
**Published 1896**  
**Source map scale - 1:10,560**

The historical maps shown were reproduced from maps predominantly held at the scale adopted for England, Wales and Scotland in the 1840's. In 1854 the 1:2,500 scale was adopted for mapping urban areas; these maps were used to update the 1:10,560 maps. The published date given therefore is often some years later than the surveyed date. Before 1938, all OS maps were based on the Cassini Projection, with independent surveys of a single county or group of counties, giving rise to significant inaccuracies in outlying areas. In the late 1940's, a Provisional Edition was produced, which updated the 1:10,560 mapping from a number of sources. The maps appear unfinished - with all military camps and other strategic sites removed. These maps were initially overprinted with the National Grid. In 1970, the first 1:10,000 maps were produced using the Transverse Mercator Projection. The revision process continued until recently, with new editions appearing every 10 years or so for urban areas.

### Map Name(s) and Date(s)



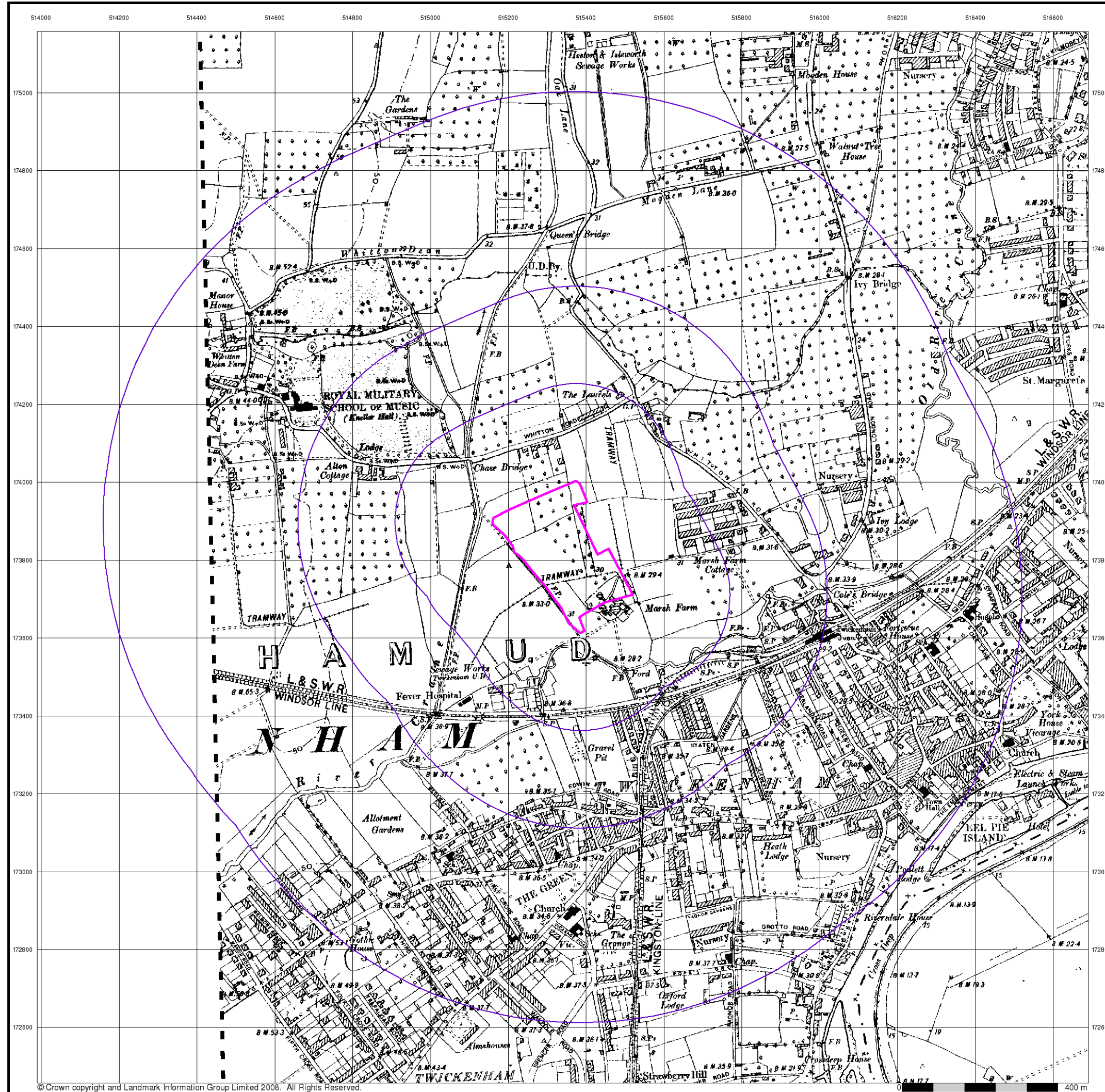
### Historical Map - Slice A



**Order Details**  
 Order Number: 25489111\_1\_1  
 Customer Ref: STE1297R  
 National Grid Reference: 515350, 173810  
 Slice: A  
 Site Area (Ha): 6.28  
 Search Buffer (m): 1000

**Site Details**  
 Site at 515420, 173750



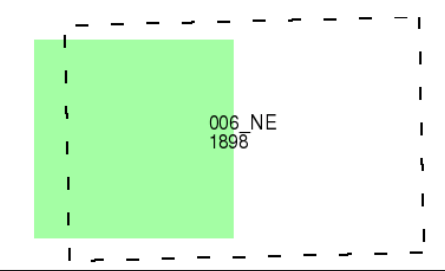


# SOILTECHNICS

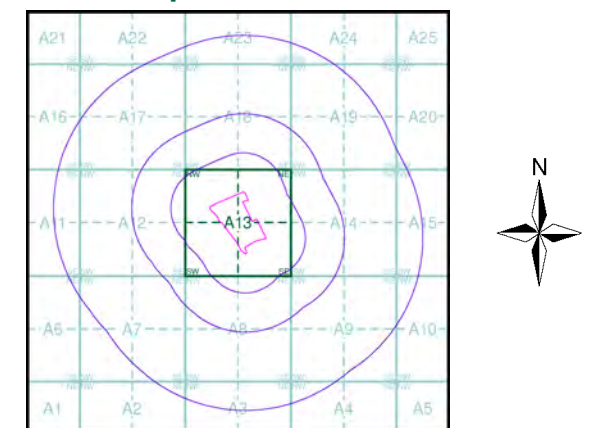
**Surrey**  
**Published 1898**  
**Source map scale - 1:10,560**

The historical maps shown were reproduced from maps predominantly held at the scale adopted for England, Wales and Scotland in the 1840's. In 1854 the 1:2,500 scale was adopted for mapping urban areas; these maps were used to update the 1:10,560 maps. The published date given therefore is often some years later than the surveyed date. Before 1938, all OS maps were based on the Cassini Projection, with independent surveys of a single county or group of counties, giving rise to significant inaccuracies in outlying areas. In the late 1940's, a Provisional Edition was produced, which updated the 1:10,560 mapping from a number of sources. The maps appear unfinished - with all military camps and other strategic sites removed. These maps were initially overprinted with the National Grid. In 1970, the first 1:10,000 maps were produced using the Transverse Mercator Projection. The revision process continued until recently, with new editions appearing every 10 years or so for urban areas.

## Map Name(s) and Date(s)



## Historical Map - Slice A



## Order Details

Order Number: 25489111\_1\_1  
 Customer Ref: STE1297R  
 National Grid Reference: 515350, 173810  
 Slice: A  
 Site Area (Ha): 6.28  
 Search Buffer (m): 1000

## Site Details

Site at 515420, 173750





# SOILTECHNICS

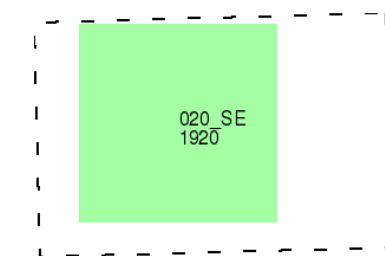
Middlesex

Published 1920

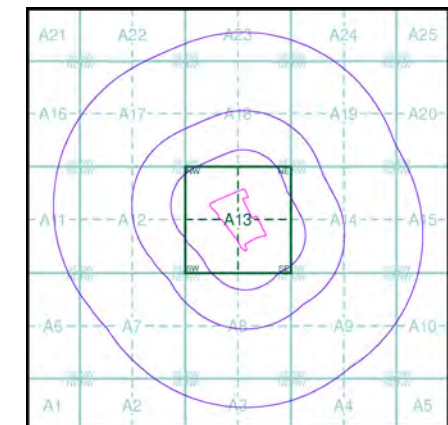
Source map scale - 1:10,560

The historical maps shown were reproduced from maps predominantly held at the scale adopted for England, Wales and Scotland in the 1840's. In 1854 the 1:2,500 scale was adopted for mapping urban areas; these maps were used to update the 1:10,560 maps. The published date given therefore is often some years later than the surveyed date. Before 1938, all OS maps were based on the Cassini Projection, with independent surveys of a single county or group of counties, giving rise to significant inaccuracies in outlying areas. In the late 1940's, a Provisional Edition was produced, which updated the 1:10,560 mapping from a number of sources. The maps appear unfinished - with all military camps and other strategic sites removed. These maps were initially overprinted with the National Grid. In 1970, the first 1:10,000 maps were produced using the Transverse Mercator Projection. The revision process continued until recently, with new editions appearing every 10 years or so for urban areas.

## Map Name(s) and Date(s)



## Historical Map - Slice A



## Order Details

Order Number: 25489111\_1\_1  
 Customer Ref: STE1297R  
 National Grid Reference: 515350, 173810  
 Slice: A  
 Site Area (Ha): 6.28  
 Search Buffer (m): 1000

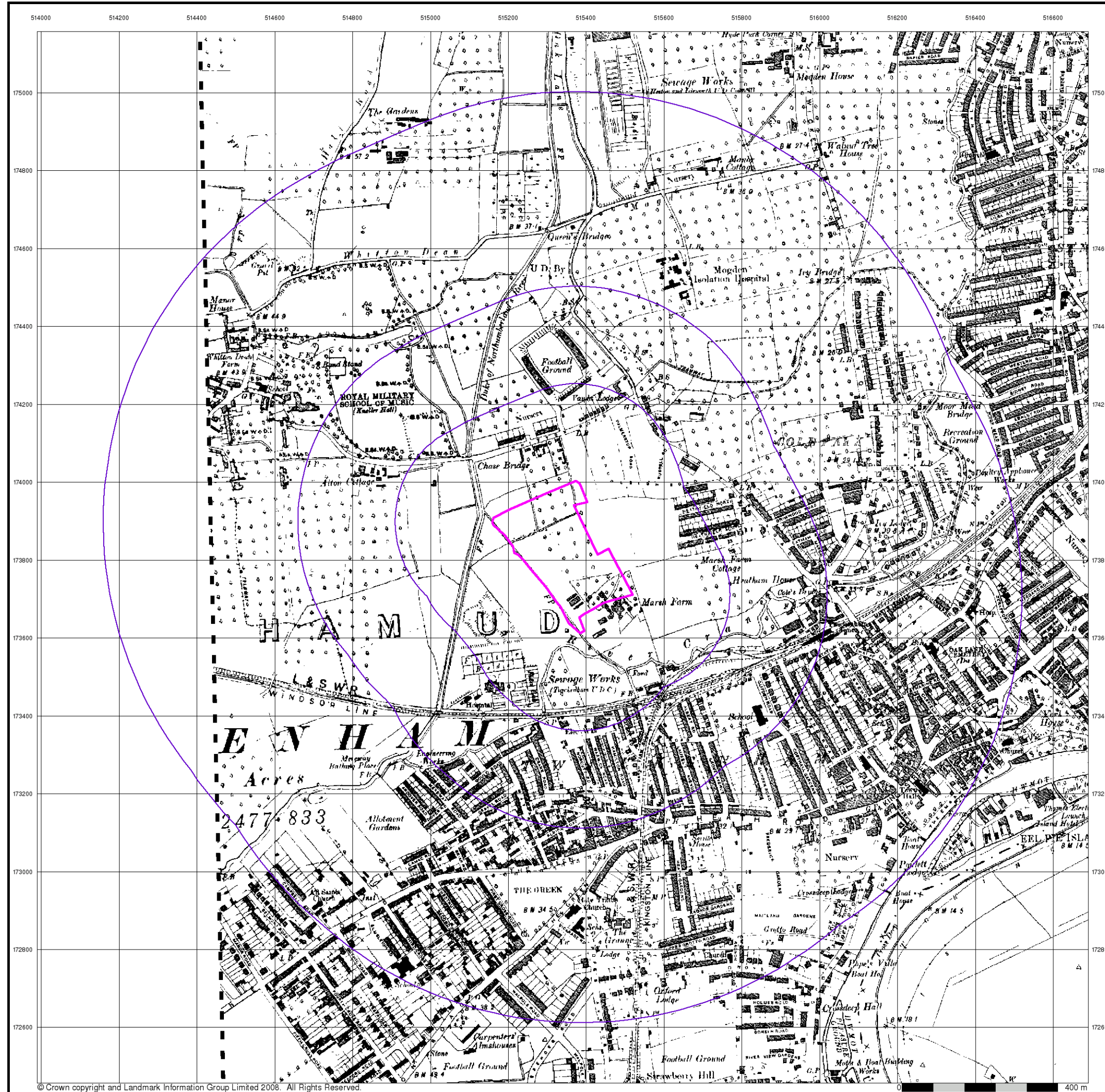
## Site Details

Site at 515420, 173750



Tel: 0844 844 9952  
 Fax: 0844 844 9951  
 Web: www.envirocheck.co.uk



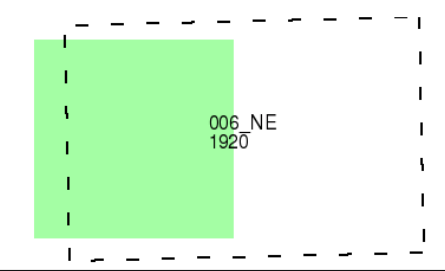


# SOILTECHNICS

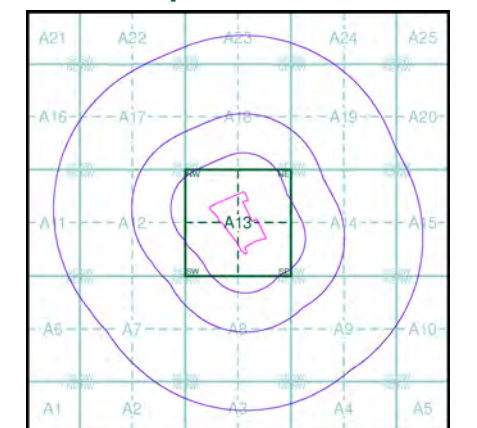
**Surrey**  
**Published 1920**  
**Source map scale - 1:10,560**

The historical maps shown were reproduced from maps predominantly held at the scale adopted for England, Wales and Scotland in the 1840's. In 1854 the 1:2,500 scale was adopted for mapping urban areas; these maps were used to update the 1:10,560 maps. The published date given therefore is often some years later than the surveyed date. Before 1938, all OS maps were based on the Cassini Projection, with independent surveys of a single county or group of counties, giving rise to significant inaccuracies in outlying areas. In the late 1940's, a Provisional Edition was produced, which updated the 1:10,560 mapping from a number of sources. The maps appear unfinished - with all military camps and other strategic sites removed. These maps were initially overprinted with the National Grid. In 1970, the first 1:10,000 maps were produced using the Transverse Mercator Projection. The revision process continued until recently, with new editions appearing every 10 years or so for urban areas.

### Map Name(s) and Date(s)



### Historical Map - Slice A



### Order Details

Order Number: 25489111\_1\_1  
 Customer Ref: STE1297R  
 National Grid Reference: 515350, 173810  
 Slice: A  
 Site Area (Ha): 6.28  
 Search Buffer (m): 1000

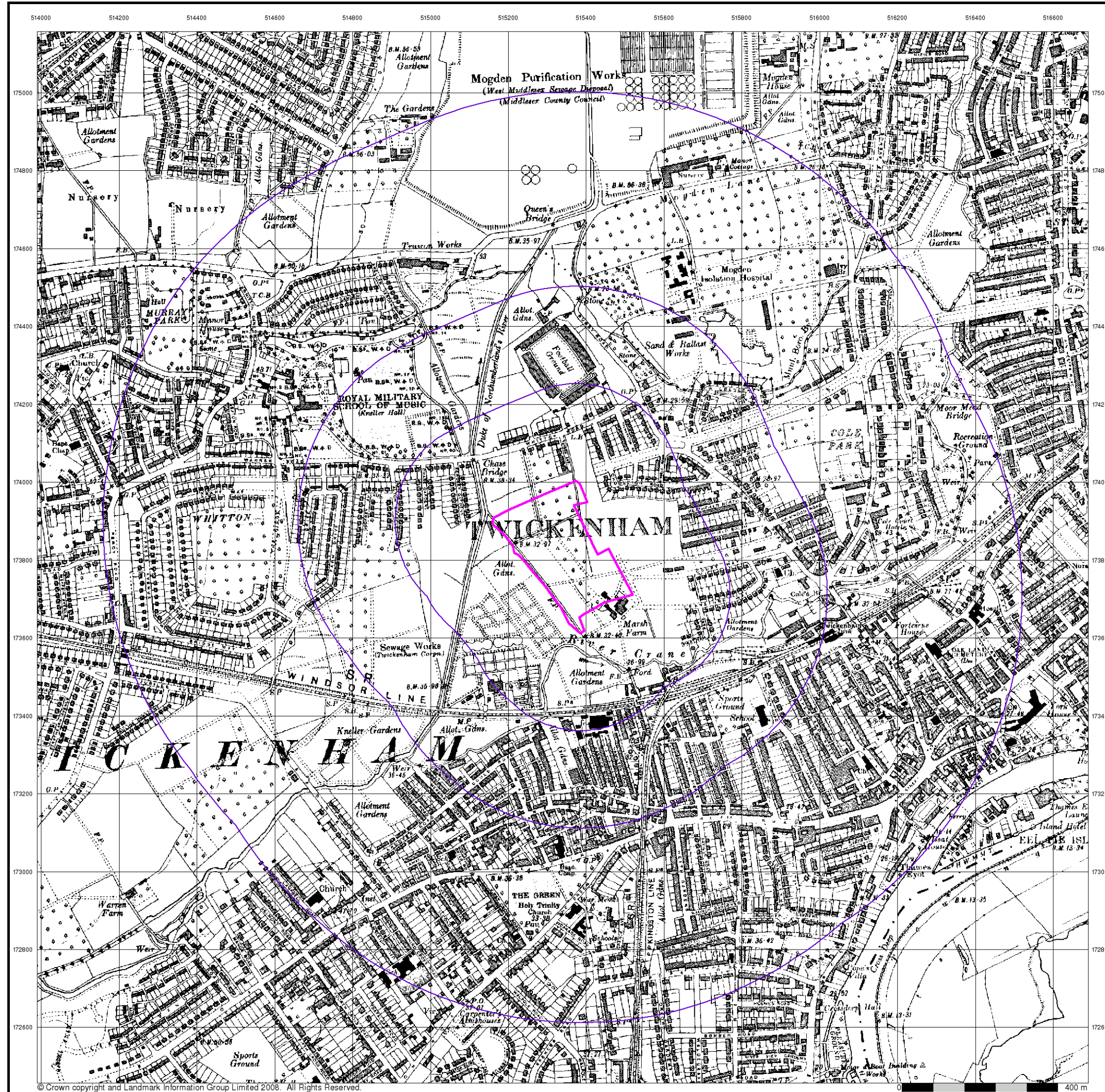
### Site Details

Site at 515420, 173750



Tel: 0844 844 9952  
 Fax: 0844 844 9951  
 Web: www.envirocheck.co.uk





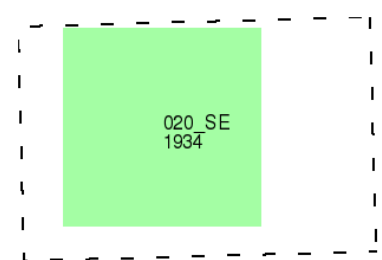
© Crown copyright and Landmark Information Group Limited 2008. All Rights Reserved.

# SOILTECHNICS

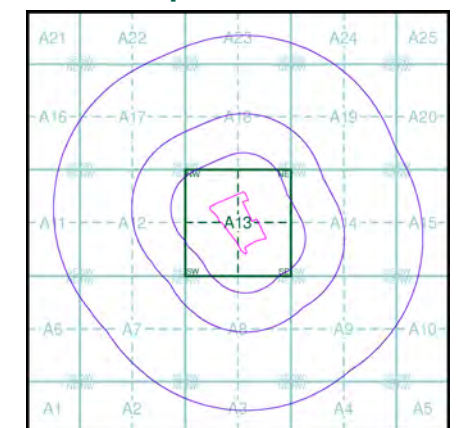
**Middlesex**  
**Published 1934**  
**Source map scale - 1:10,560**

The historical maps shown were reproduced from maps predominantly held at the scale adopted for England, Wales and Scotland in the 1840's. In 1854 the 1:2,500 scale was adopted for mapping urban areas; these maps were used to update the 1:10,560 maps. The published date given therefore is often some years later than the surveyed date. Before 1938, all OS maps were based on the Cassini Projection, with independent surveys of a single county or group of counties, giving rise to significant inaccuracies in outlying areas. In the late 1940's, a Provisional Edition was produced, which updated the 1:10,560 mapping from a number of sources. The maps appear unfinished - with all military camps and other strategic sites removed. These maps were initially overprinted with the National Grid. In 1970, the first 1:10,000 maps were produced using the Transverse Mercator Projection. The revision process continued until recently, with new editions appearing every 10 years or so for urban areas.

## Map Name(s) and Date(s)



## Historical Map - Slice A



## Order Details

Order Number: 25489111\_1\_1  
 Customer Ref: STE1297R  
 National Grid Reference: 515350, 173810  
 Slice: A  
 Site Area (Ha): 6.28  
 Search Buffer (m): 1000

## Site Details

Site at 515420, 173750



Tel: 0844 844 9952  
 Fax: 0844 844 9951  
 Web: www.envirocheck.co.uk





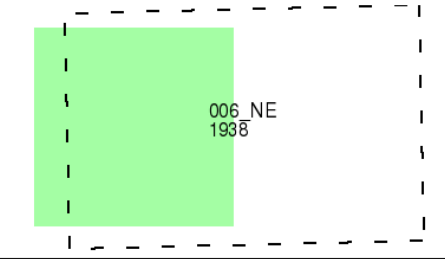
© Crown copyright and Landmark Information Group Limited 2008. All Rights Reserved.

# SOILTECHNICS

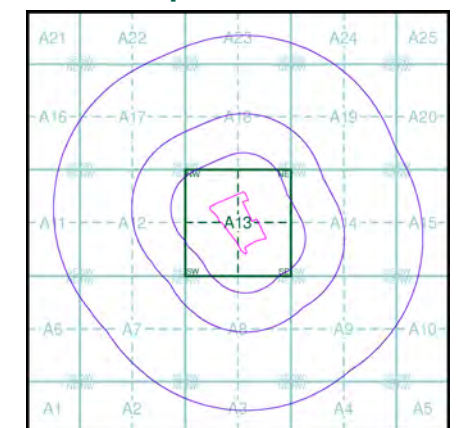
**Surrey**  
**Published 1938**  
**Source map scale - 1:10,560**

The historical maps shown were reproduced from maps predominantly held at the scale adopted for England, Wales and Scotland in the 1840's. In 1854 the 1:2,500 scale was adopted for mapping urban areas; these maps were used to update the 1:10,560 maps. The published date given therefore is often some years later than the surveyed date. Before 1938, all OS maps were based on the Cassini Projection, with independent surveys of a single county or group of counties, giving rise to significant inaccuracies in outlying areas. In the late 1940's, a Provisional Edition was produced, which updated the 1:10,560 mapping from a number of sources. The maps appear unfinished - with all military camps and other strategic sites removed. These maps were initially overprinted with the National Grid. In 1970, the first 1:10,000 maps were produced using the Transverse Mercator Projection. The revision process continued until recently, with new editions appearing every 10 years or so for urban areas.

## Map Name(s) and Date(s)



## Historical Map - Slice A



## Order Details

Order Number: 25489111\_1\_1  
 Customer Ref: STE1297R  
 National Grid Reference: 515350, 173810  
 Slice: A  
 Site Area (Ha): 6.28  
 Search Buffer (m): 1000

## Site Details

Site at 515420, 173750



Tel: 0844 844 9952  
 Fax: 0844 844 9951  
 Web: www.envirocheck.co.uk



## Ordnance Survey Plan

Published 1949 - 1960

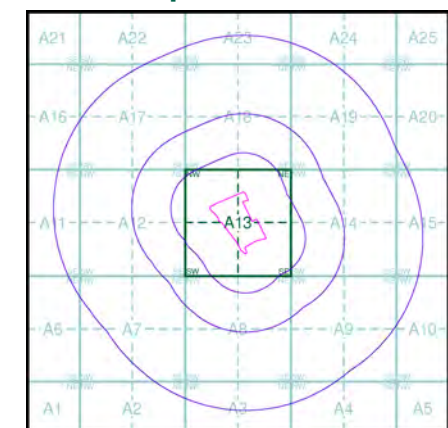
Source map scale - 1:10,560

The historical maps shown were reproduced from maps predominantly held at the scale adopted for England, Wales and Scotland in the 1840's. In 1854 the 1:2,500 scale was adopted for mapping urban areas; these maps were used to update the 1:10,560 maps. The published date given therefore is often some years later than the surveyed date. Before 1938, all OS maps were based on the Cassini Projection, with independent surveys of a single county or group of counties, giving rise to significant inaccuracies in outlying areas. In the late 1940's, a Provisional Edition was produced, which updated the 1:10,560 mapping from a number of sources. The maps appear unfinished - with all military camps and other strategic sites removed. These maps were initially overprinted with the National Grid. In 1970, the first 1:10,000 maps were produced using the Transverse Mercator Projection. The revision process continued until recently, with new editions appearing every 10 years or so for urban areas.

### Map Name(s) and Date(s)

TQ17NW 1960	TQ17NE 1949
TQ17SW 1960	TQ17SE 1949

### Historical Map - Slice A

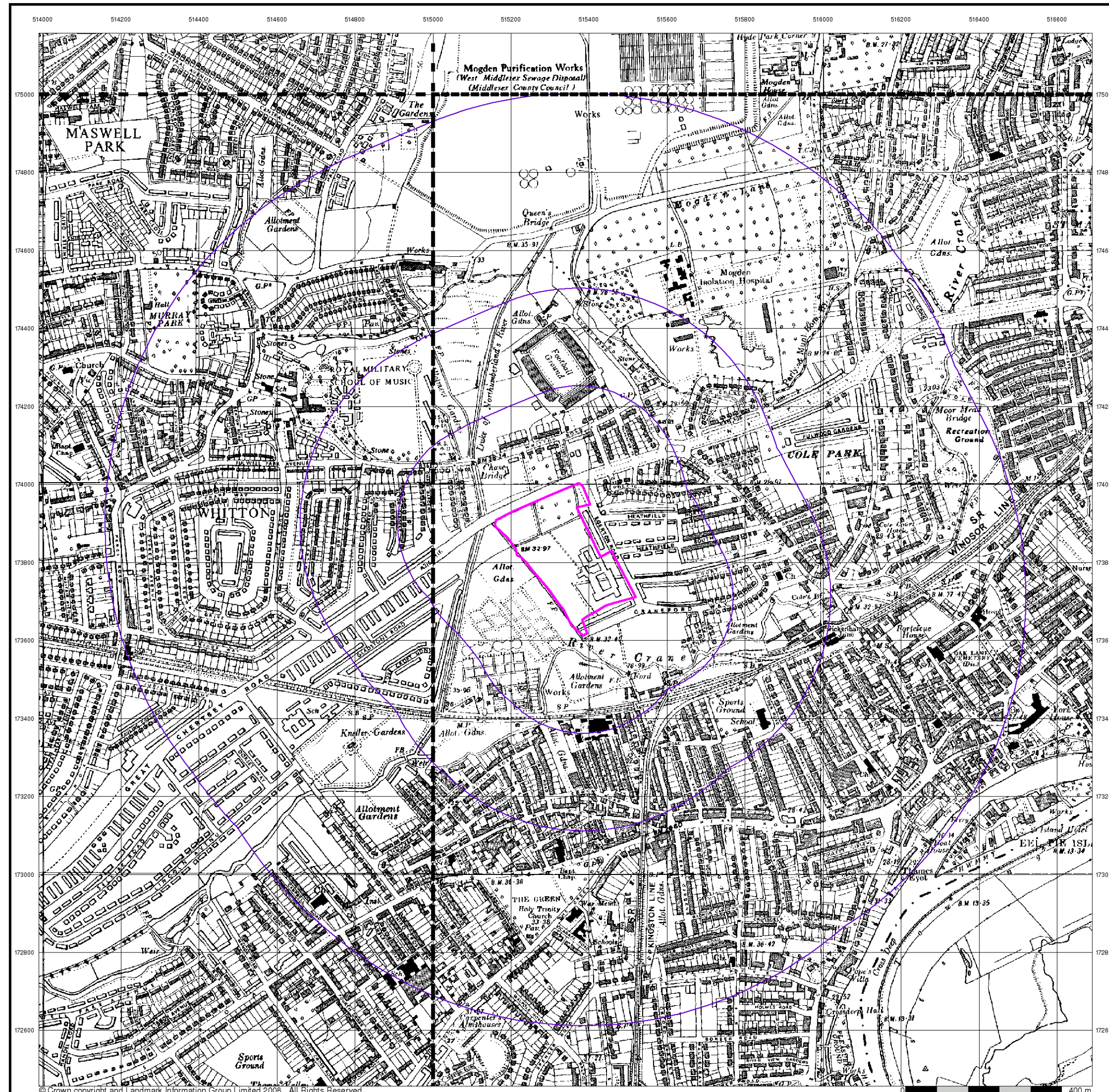


### Order Details

Order Number: 25489111\_1\_1  
 Customer Ref: STE1297R  
 National Grid Reference: 515350, 173810  
 Slice: A  
 Site Area (Ha): 6.28  
 Search Buffer (m): 1000

### Site Details

Site at 515420, 173750





## Ordnance Survey Plan

Published 1963 - 1966

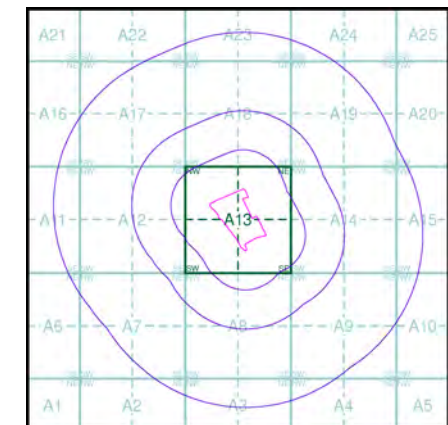
Source map scale - 1:10,560

The historical maps shown were reproduced from maps predominantly held at the scale adopted for England, Wales and Scotland in the 1840's. In 1854 the 1:2,500 scale was adopted for mapping urban areas; these maps were used to update the 1:10,560 maps. The published date given therefore is often some years later than the surveyed date. Before 1938, all OS maps were based on the Cassini Projection, with independent surveys of a single county or group of counties, giving rise to significant inaccuracies in outlying areas. In the late 1940's, a Provisional Edition was produced, which updated the 1:10,560 mapping from a number of sources. The maps appear unfinished - with all military camps and other strategic sites removed. These maps were initially overprinted with the National Grid. In 1970, the first 1:10,000 maps were produced using the Transverse Mercator Projection. The revision process continued until recently, with new editions appearing every 10 years or so for urban areas.

### Map Name(s) and Date(s)

TQ17NW 1966	TQ17NE 1963
TQ17SW 1966	TQ17SE 1966

### Historical Map - Slice A



### Order Details

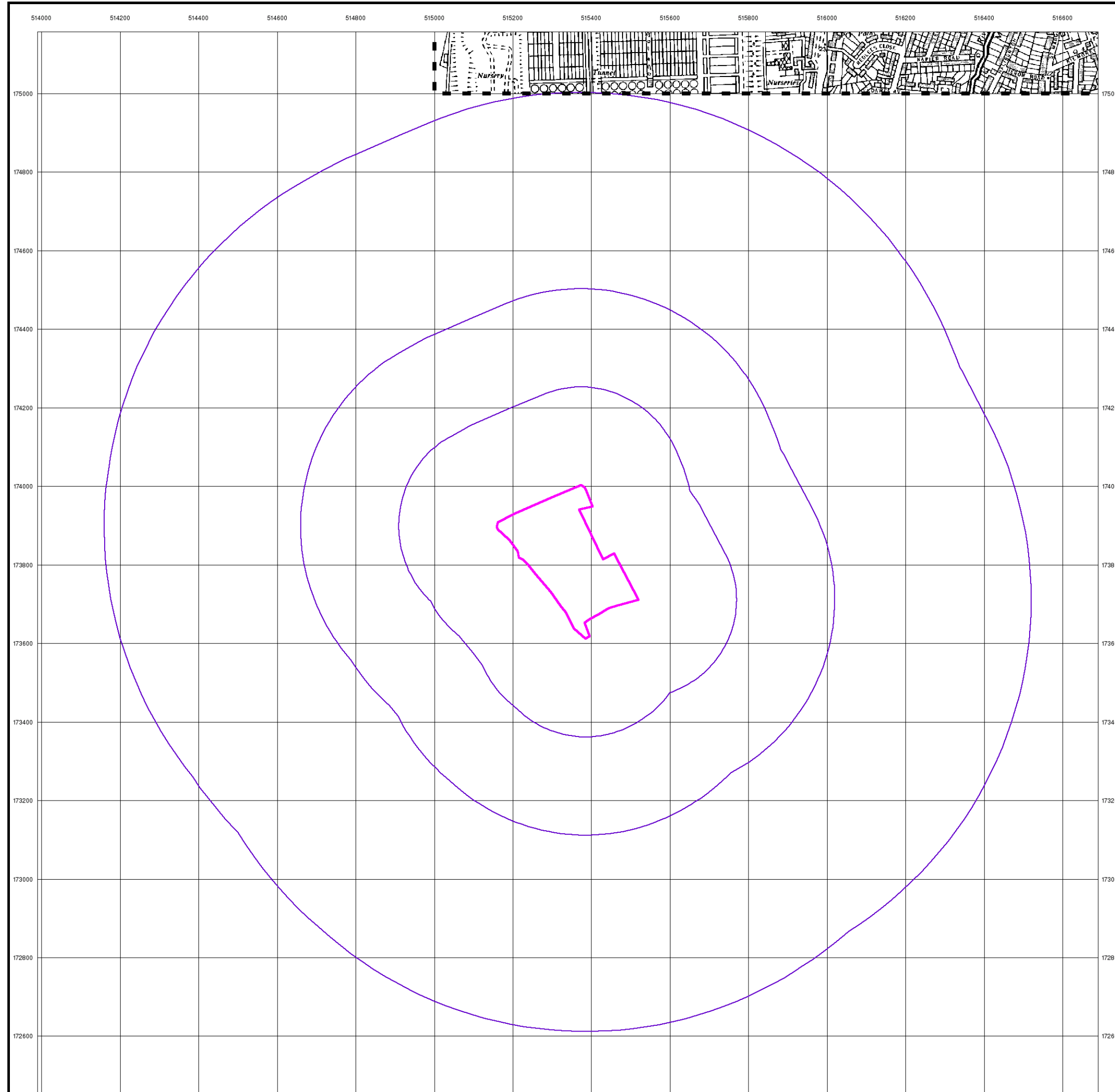
Order Number: 25489111\_1\_1  
 Customer Ref: STE1297R  
 National Grid Reference: 515350, 173810  
 Slice: A  
 Site Area (Ha): 6.28  
 Search Buffer (m): 1000

### Site Details

Site at 515420, 173750





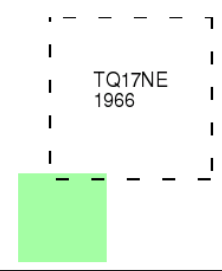


# SOILTECHNICS

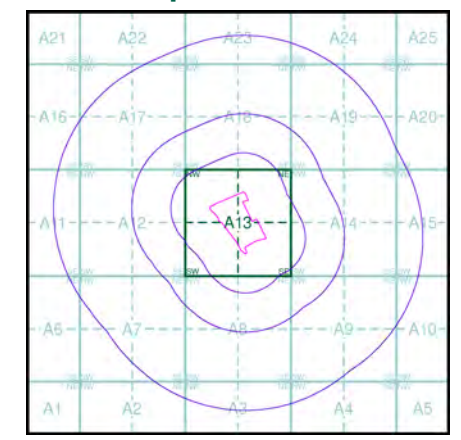
**Ordnance Survey Plan**  
**Published 1966**  
**Source map scale - 1:10,560**

The historical maps shown were reproduced from maps predominantly held at the scale adopted for England, Wales and Scotland in the 1840's. In 1854 the 1:2,500 scale was adopted for mapping urban areas; these maps were used to update the 1:10,560 maps. The published date given therefore is often some years later than the surveyed date. Before 1938, all OS maps were based on the Cassini Projection, with independent surveys of a single county or group of counties, giving rise to significant inaccuracies in outlying areas. In the late 1940's, a Provisional Edition was produced, which updated the 1:10,560 mapping from a number of sources. The maps appear unfinished - with all military camps and other strategic sites removed. These maps were initially overprinted with the National Grid. In 1970, the first 1:10,000 maps were produced using the Transverse Mercator Projection. The revision process continued until recently, with new editions appearing every 10 years or so for urban areas.

### Map Name(s) and Date(s)



### Historical Map - Slice A



### Order Details

Order Number: 25489111\_1\_1  
 Customer Ref: STE1297R  
 National Grid Reference: 515350, 173810  
 Slice: A  
 Site Area (Ha): 6.28  
 Search Buffer (m): 1000

### Site Details

Site at 515420, 173750



Tel: 0844 844 9952  
 Fax: 0844 844 9951  
 Web: www.envirocheck.co.uk



## Ordnance Survey Plan

Published 1974 - 1975

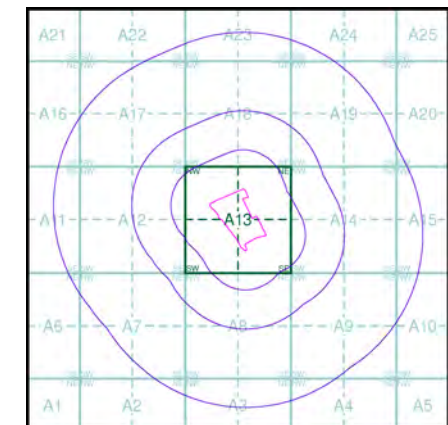
Source map scale - 1:10,000

The historical maps shown were reproduced from maps predominantly held at the scale adopted for England, Wales and Scotland in the 1840's. In 1854 the 1:2,500 scale was adopted for mapping urban areas; these maps were used to update the 1:10,560 maps. The published date given therefore is often some years later than the surveyed date. Before 1938, all OS maps were based on the Cassini Projection, with independent surveys of a single county or group of counties, giving rise to significant inaccuracies in outlying areas. In the late 1940's, a Provisional Edition was produced, which updated the 1:10,560 mapping from a number of sources. The maps appear unfinished - with all military camps and other strategic sites removed. These maps were initially overprinted with the National Grid. In 1970, the first 1:10,000 maps were produced using the Transverse Mercator Projection. The revision process continued until recently, with new editions appearing every 10 years or so for urban areas.

### Map Name(s) and Date(s)

TQ17NW	1974	
TQ17SW	1975	TQ17SE
		1975

### Historical Map - Slice A



### Order Details

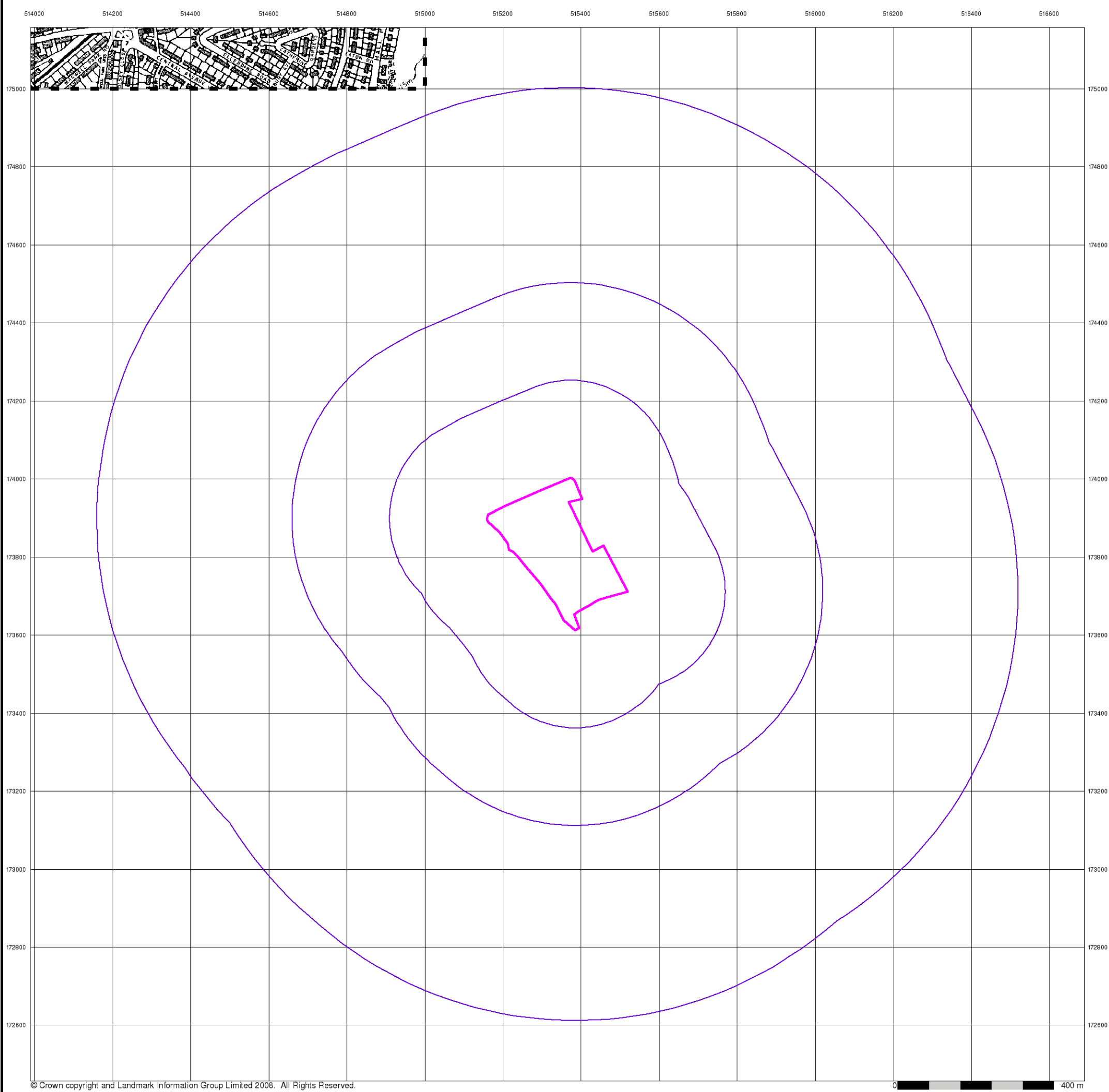
Order Number: 25489111\_1\_1  
 Customer Ref: STE1297R  
 National Grid Reference: 515350, 173810  
 Slice: A  
 Site Area (Ha): 6.28  
 Search Buffer (m): 1000

### Site Details

Site at 515420, 173750







© Crown copyright and Landmark Information Group Limited 2008. All Rights Reserved.

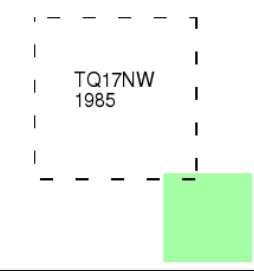


# SOILTECHNICS

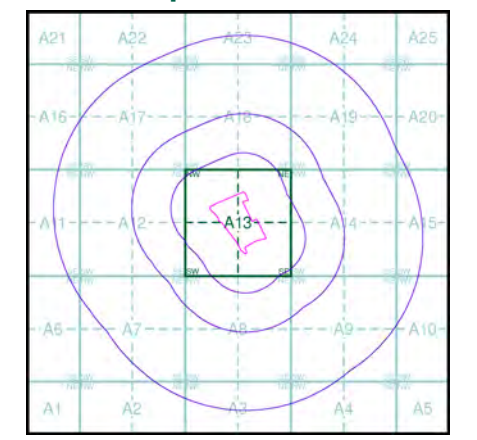
**Ordnance Survey Plan**  
**Published 1985**  
**Source map scale - 1:10,000**

The historical maps shown were reproduced from maps predominantly held at the scale adopted for England, Wales and Scotland in the 1840's. In 1854 the 1:2,500 scale was adopted for mapping urban areas; these maps were used to update the 1:10,560 maps. The published date given therefore is often some years later than the surveyed date. Before 1938, all OS maps were based on the Cassini Projection, with independent surveys of a single county or group of counties, giving rise to significant inaccuracies in outlying areas. In the late 1940's, a Provisional Edition was produced, which updated the 1:10,560 mapping from a number of sources. The maps appear unfinished - with all military camps and other strategic sites removed. These maps were initially overprinted with the National Grid. In 1970, the first 1:10,000 maps were produced using the Transverse Mercator Projection. The revision process continued until recently, with new editions appearing every 10 years or so for urban areas.

### Map Name(s) and Date(s)



### Historical Map - Slice A



### Order Details

Order Number: 25489111\_1\_1  
 Customer Ref: STE1297R  
 National Grid Reference: 515350, 173810  
 Slice: A  
 Site Area (Ha): 6.28  
 Search Buffer (m): 1000

### Site Details

Site at 515420, 173750



Tel: 0844 844 9952  
 Fax: 0844 844 9951  
 Web: www.envirocheck.co.uk



