

CHAPTER 16 – APPENDICES

CONTENTS

Appendix 16.1: Townscape and Visual Assessment Impact Assessment Figures, Photographs and Visualisations

Appendix 16.2: Assessment Criteria

Appendix 16.3: List of Parameters Plans and Other Documents

Appendix 16.4: Extracts from Design Quality

Appendix 16.5: Local Townscape Character Analysis

Appendix 16.6: Assessment of Construction Effects on Representative Views

Appendix 16.7: Summary Assessment of Representative Views – Operation

Planning Application to London Borough Richmond upon Thames

Richmond Education and Enterprise Campus
Redevelopment

Appendix 16.1: Townscape and Visual Impact
Assessment Figures, Photographs and Visualisations

Nathaniel Lichfield & Partners

Contents

Part 1: Figures 16.1-16.10

Figure A16.1: Aerial Photograph

Figure A16.2: Topography

Figure A16.3: Theoretical Zone of Visual Influence (Local)

Figure A16.4 Existing Townscape Analysis: Urban Grain

Figure A16.5 Existing Townscape Analysis: Landscape Structure

Figure A16.6 Existing Townscape Analysis: Building Heights

Figure A16.7 Existing Townscape Analysis: Movement and Activity

Figure A16.8 Existing Townscape Analysis: Predominant Land Use

Figure A16.9: Townscape Character Areas

Figure A16.10: Potential Townscape and Visual Receptors

Part 2: Visual Impact Assessment

Figure A16.11a: Key Representative Viewpoint and AVR Locations (Local)

Figure A16.11b: Key Representative Views and AVR Locations (Long)

Photosheets and Accurate Visual Representations

Part 3: Methodology for Visualisations

Part 1: Figures 16.1-16.10

Figure A16.1	Aerial Photograph
Figure A16.2	Topography
Figure A16.3	Theoretical Zone of Visual Influence (Local)
Figure A16.4	Existing Townscape Analysis: Urban Grain
Figure A16.5	Existing Townscape Analysis: Landscape Structure
Figure A16.6	Existing Townscape Analysis: Building Heights
Figure A16.7	Existing Townscape Analysis: Movement and Activity
Figure A16.8	Existing Townscape Analysis: Predominant Land Use
Figure A16.9	Townscape Character Areas
Figure A16.10	Potential Townscape and Visual Receptors



KEY

Boundary of site



Nathaniel Lichfield & Partners
 Planning, Design, Economics.

Project **Richmond College**

Title **Figure A16.1
 Aerial Photograph**

Client **Cascade Consulting**

Date **April 2015**

Scale **NTS**

Drawn by **JC**

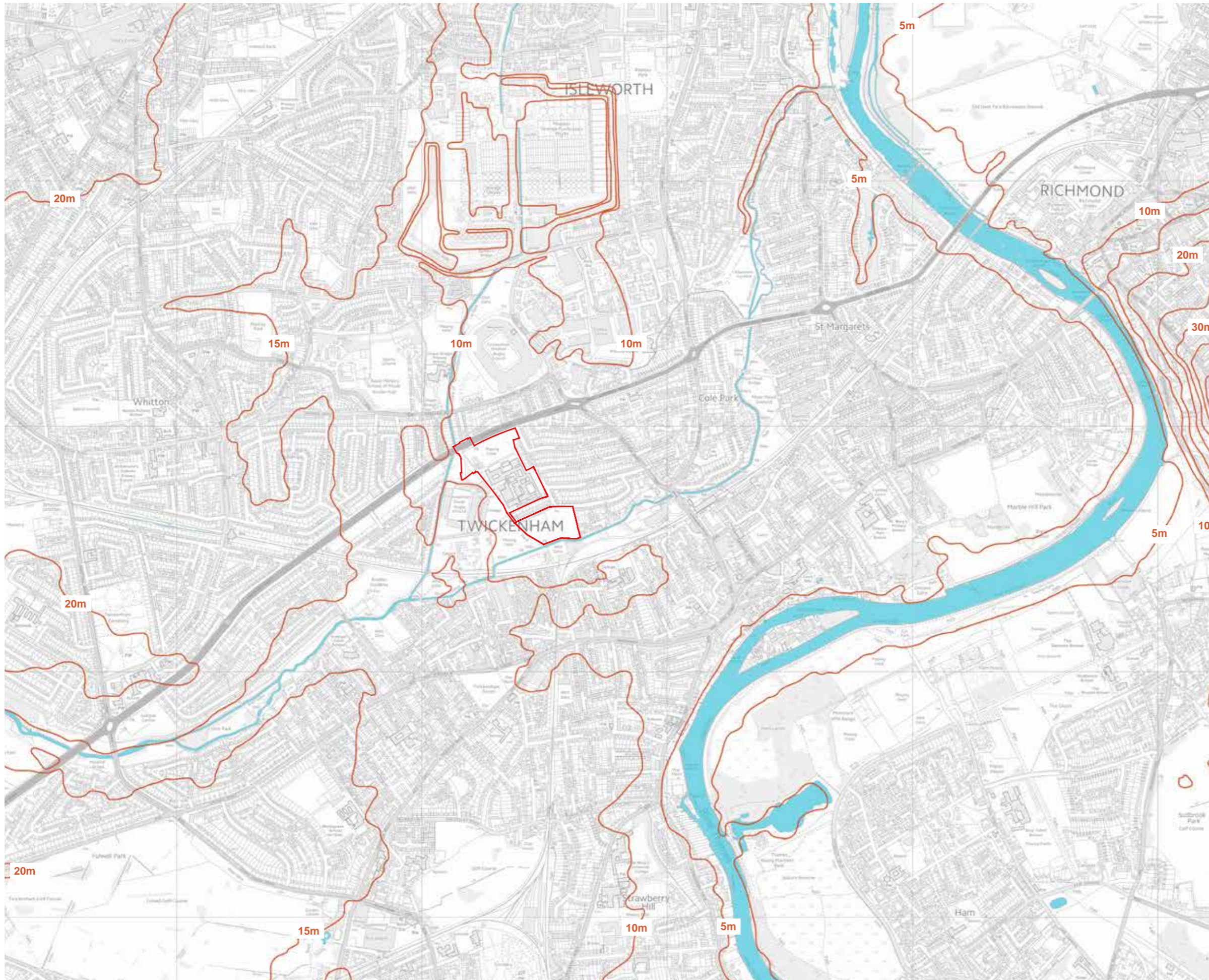
Drg. No **ID13896-07**

N





CL13896

Based upon Ordnance Survey mapping with the permission of Her Majesty's Stationery Office. © Crown Copyright reserved. Licence number AL50684A



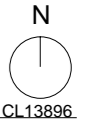
KEY

Site boundary 

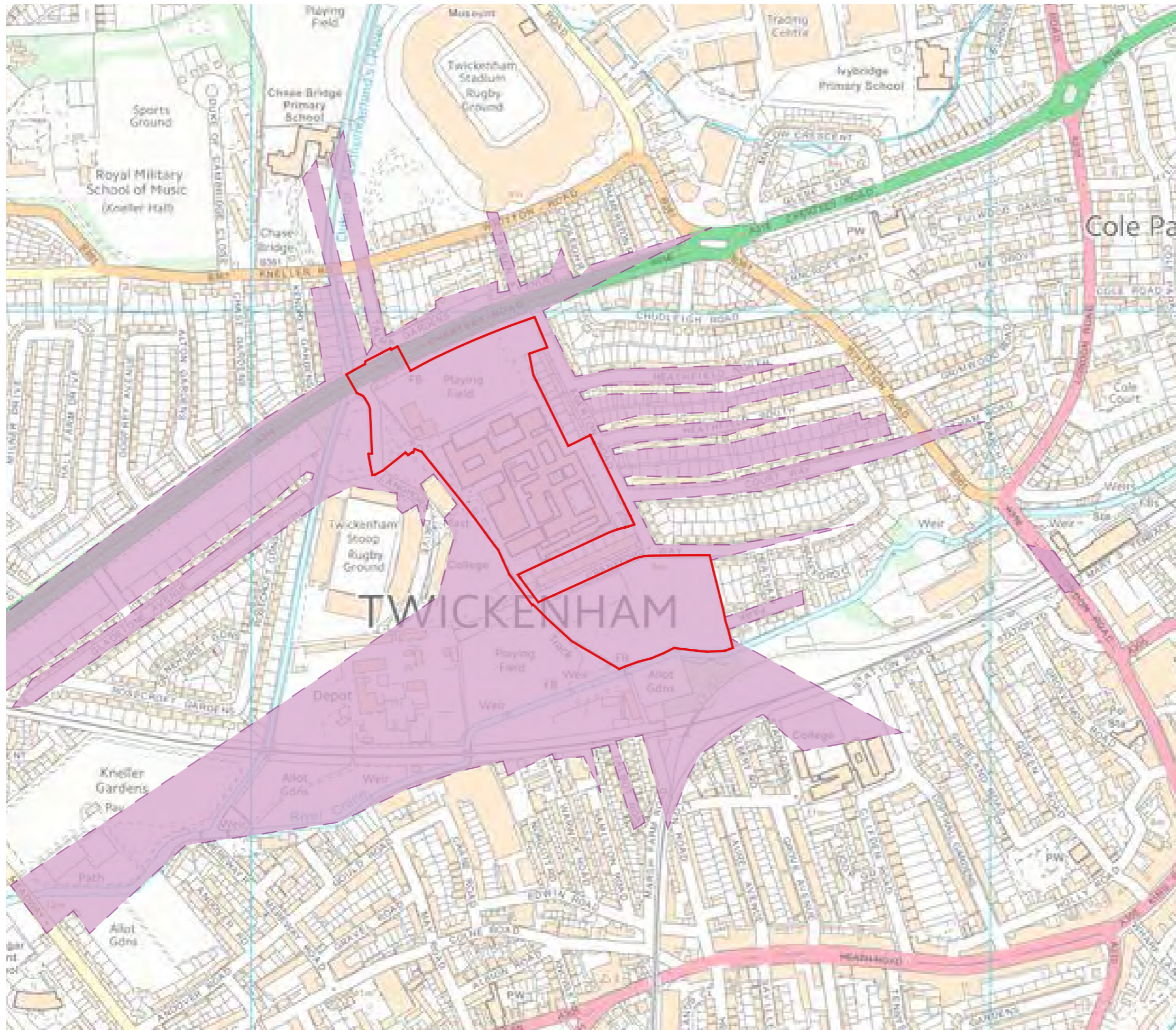
Contour 

 **Nathaniel Lichfield & Partners**
 Planning, Design, Economics.



Project	Richmond College
Title	Figure A16.2 Topography
Client	Cascade Consulting
Date	April 2015
Scale	NTS
Drawn by	JC
Drg. No	ID13896-07



Based upon Ordnance Survey mapping with the permission of Her Majesty's Stationery Office. © Crown Copyright reserved. Licence number AL50684A

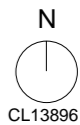


KEY

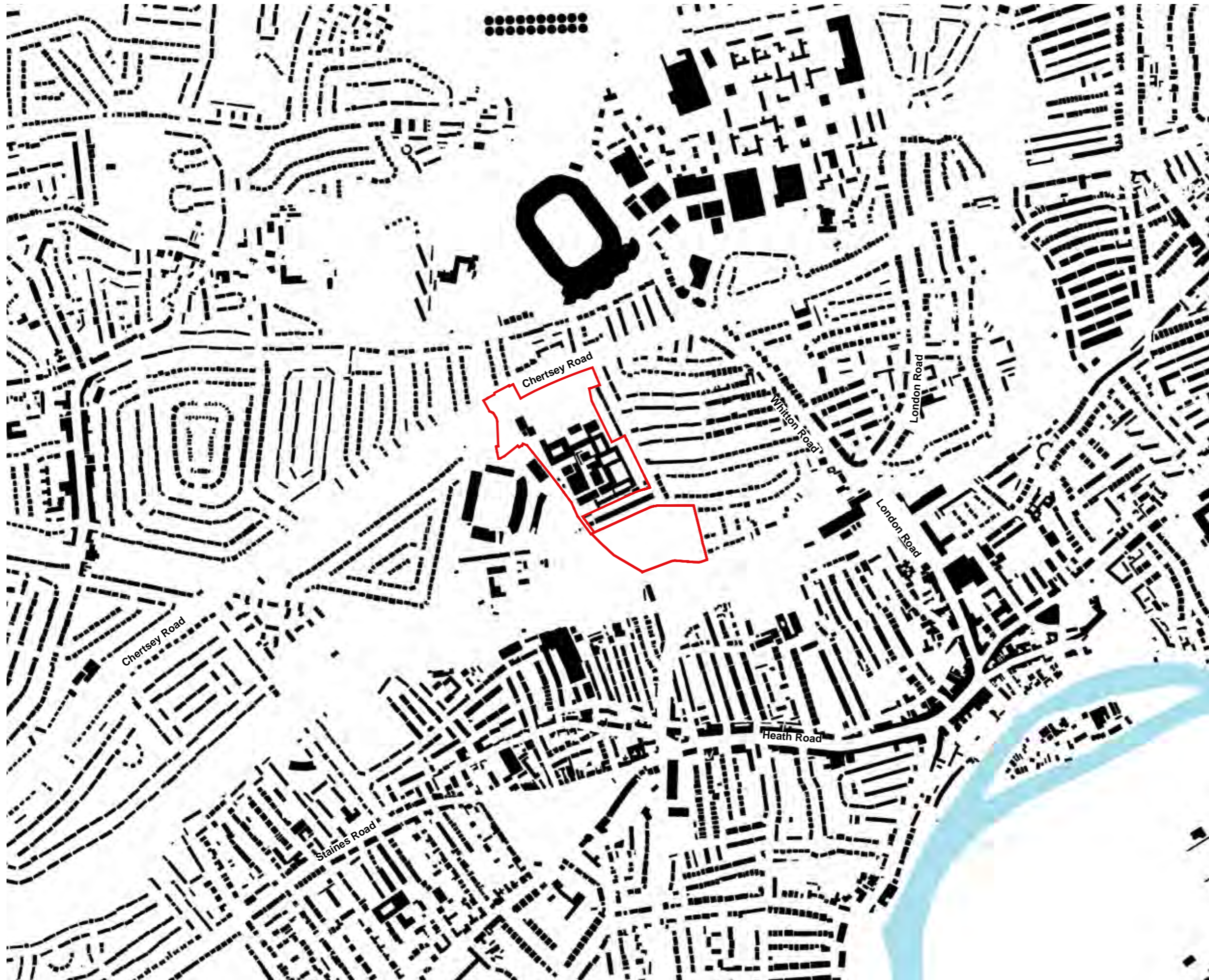
Boundary of site	
Local Zone of Visual Influence	

nlp Nathaniel Lichfield & Partners
 Planning, Design, Economics.

Project	Richmond College
Title	Figure A16.3 Theoretical Zone of Visual Influence (Local)
Client	Cascade Consulting
Date	April 2015
Scale	NTS
Drawn by	JC
Org. No	ID13896-07

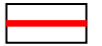


Based upon Ordnance Survey mapping with the permission of Her Majesty's Stationery Office. © Crown Copyright reserved. Licence number AL50684A



KEY

Site boundary



Watercourses



**Nathaniel Lichfield
& Partners**
Planning, Design, Economics.

Project Richmond College

Title **Figure A16.4
Existing Townscape Analysis:
Urban Grain**

Client Cascade Consulting

Date April 2015

Scale NTS

Drawn by JC

Drg. No ID13896-03

N



CL13896

Based upon Ordnance Survey mapping with the permission of Her Majesty's Stationery Office. © Crown Copyright reserved. Licence number AL50684A