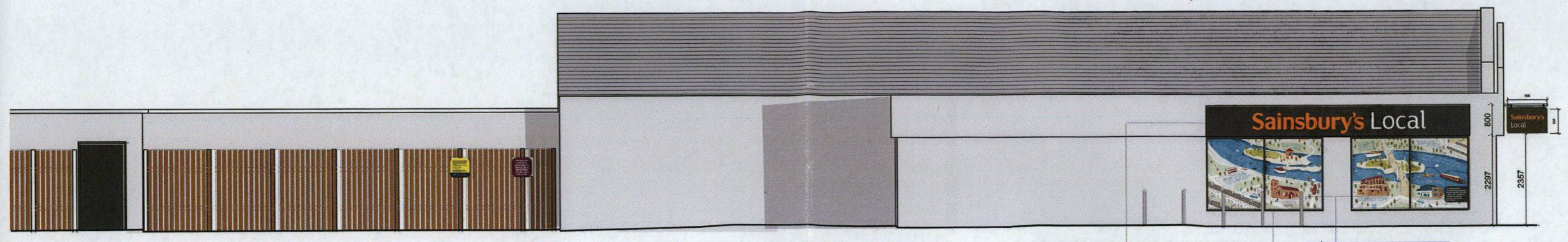


15/1176/ADU
Rec'd 8/5/15

Notes:
Do not scale from this drawing. Contractors shall be responsible for the checking of all stated dimensions, with any anomalies being identified to the originator prior to any construction or fabrication works commencing.



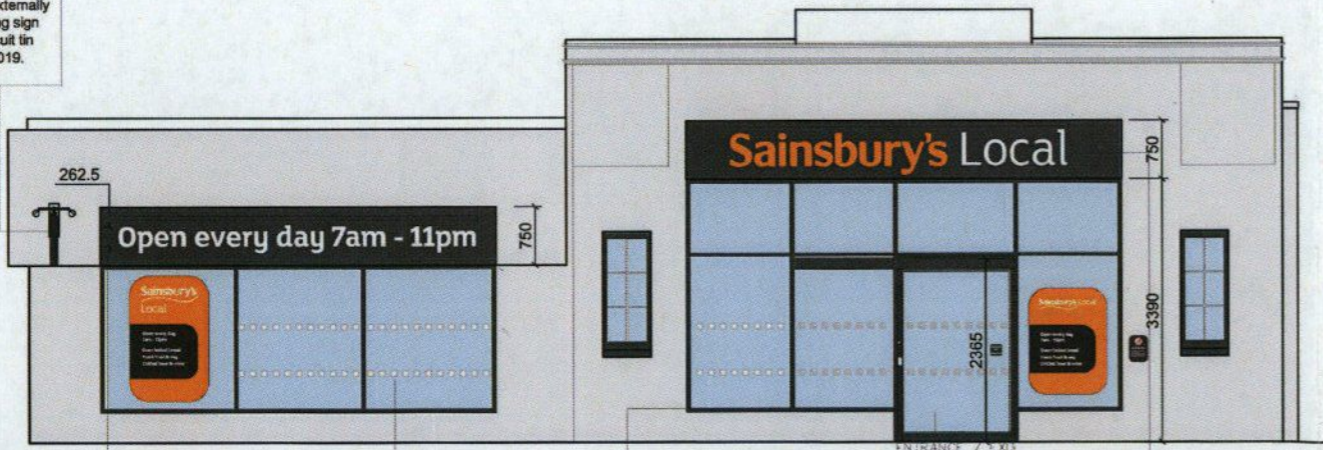
01 PROPOSED SIDE ELEVATION
P 24 52212 1:50

New Sainsbury's Local sign 425mm high built-up 20mm deep descaled stainless steel. Sainsbury's sprayed in orange and local in white. Aluminium back panel decorated in Ral 8019.
Colour coated framework. Ral 8019
Photography applied to inside of glazing to kiosk and self scan unit. Vinyl to be backed with buff colour vinyl internally to match NCS S002-Y50R.



03 PROPOSED VINYL- SIDE ELEVATION
P 24 52212 1:50- DIMENSIONS TO BE CHECKED ON SITE

1000 x 625mm double sided externally illuminated aluminium projecting sign with fret cut lettering to be biscuit tin construction. Coloured RAL 8019.



Opening times built-up 20mm deep descaled stainless steel sprayed white. Aluminium back panel and overhead trough light decorated in Ral 8019.

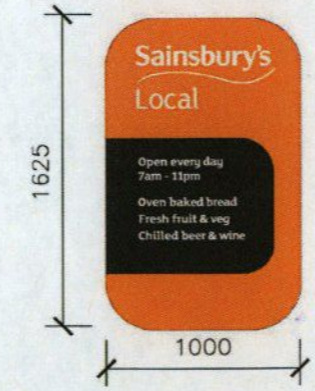
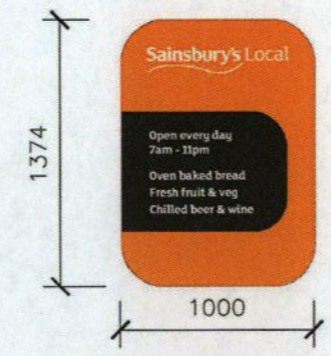
Manifestation to clear glazing - 75x75 frosted vinyl squares equally spaced at 150c/c, in two rows at 900 and 1500mm to centre of squares above finished floor level.

Colour coated framework. Ral 8019

Single sliding automatic door with finish as framework 1no. radar detector and 1 no radar with threshold safety; battery back up in case of power failure: 6no. safety beams; 1 no. multiprogrammable function switch; 1 no lockable key switch with five keys. door to fail-safe open in the event of fire alarm activation.

New Sainsbury's Local sign 425mm high built-up 20mm deep descaled stainless steel. Sainsbury's sprayed in orange and local in white. External illumination with trough light and aluminium back panel decorated in Ral 8019.

Standard application
Application on sliding and adjacent door panels



Offers, name & opening hours TBC by PM
Signage contractor to confirm material of the offer panel & check bespoke text size.

02 PROPOSED FRONT ELEVATION
P 24 52212 1:50

Rev.	Date	Description
L	08-05-15	Planning Comments/Facade Annotation
K	07-05-15	Planning Comments/Facade Annotation
J	01-05-15	Projecting Sign amended to branding principles
I	22-04-15	Projecting Sign amended as per case officer com.
H	21-04-15	ATM relocated
G	13-04-15	Amendments
F	08-04-15	ATM re-added

architects
project managers
cost consultants

Dudley House
188 Piccadilly
London
W1J 8SH
tel: 020 7440 8540

jla

Status **PLANNING**

Project Title
**196 HIGH STREET,
TEDDINGTON, TW11 8HU.
SITE REF. 2452**

Drawing Title
**SIGNAGE APPLICATION
PROPOSED ELEVATIONS**

Project Number	Drawing Number	Revision
S-2452	P-2452-212	L

Drawn	Checked	Scale	Date
MC	---	1:100@A1 1:200@A3	18-10-12

The content of this drawing is the property of JLA Chartered Architects and may not be copied in whole or part without formal consent.