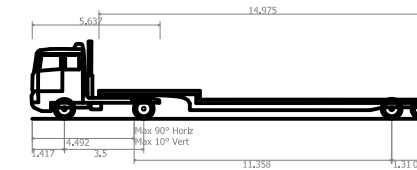
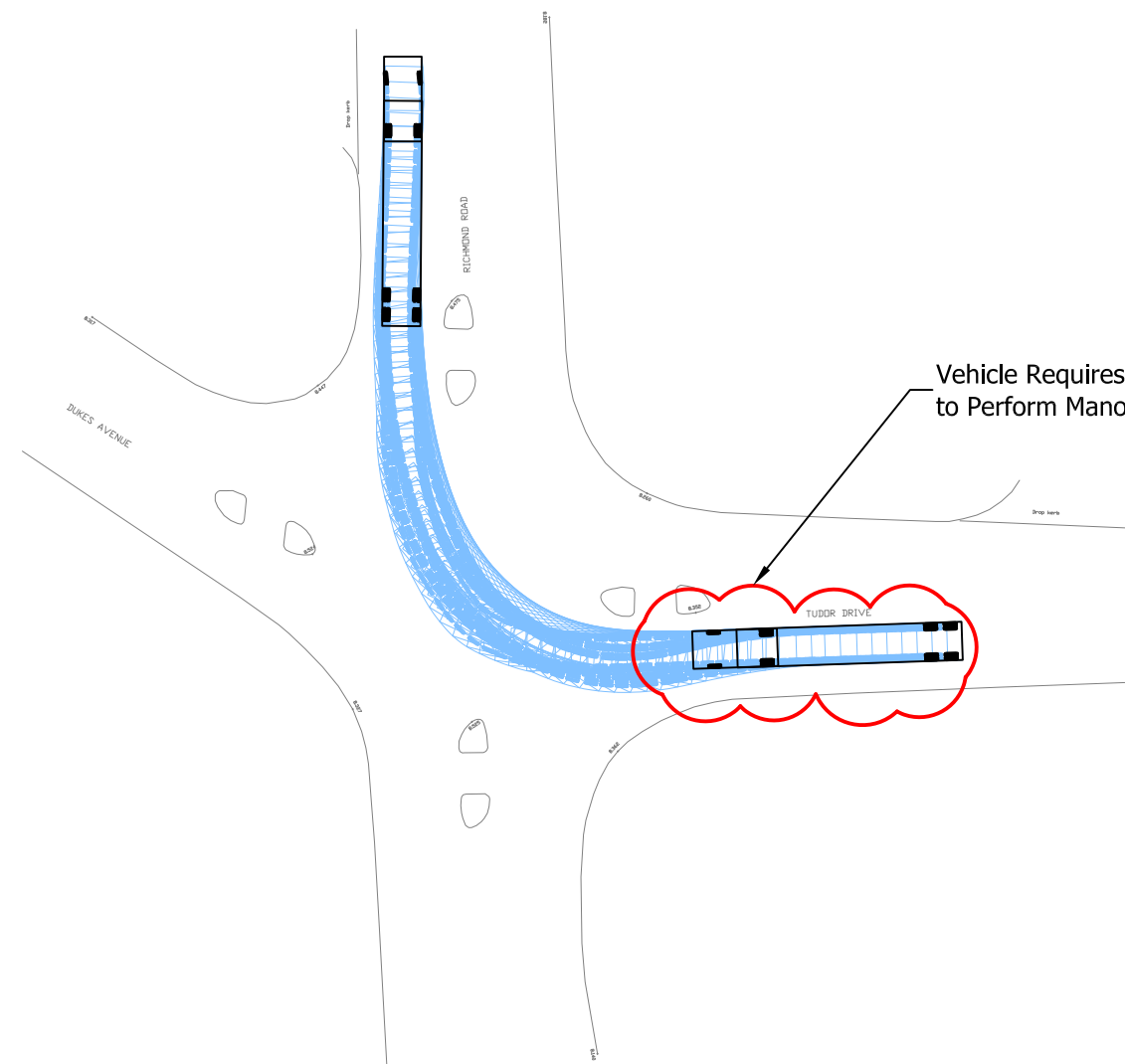
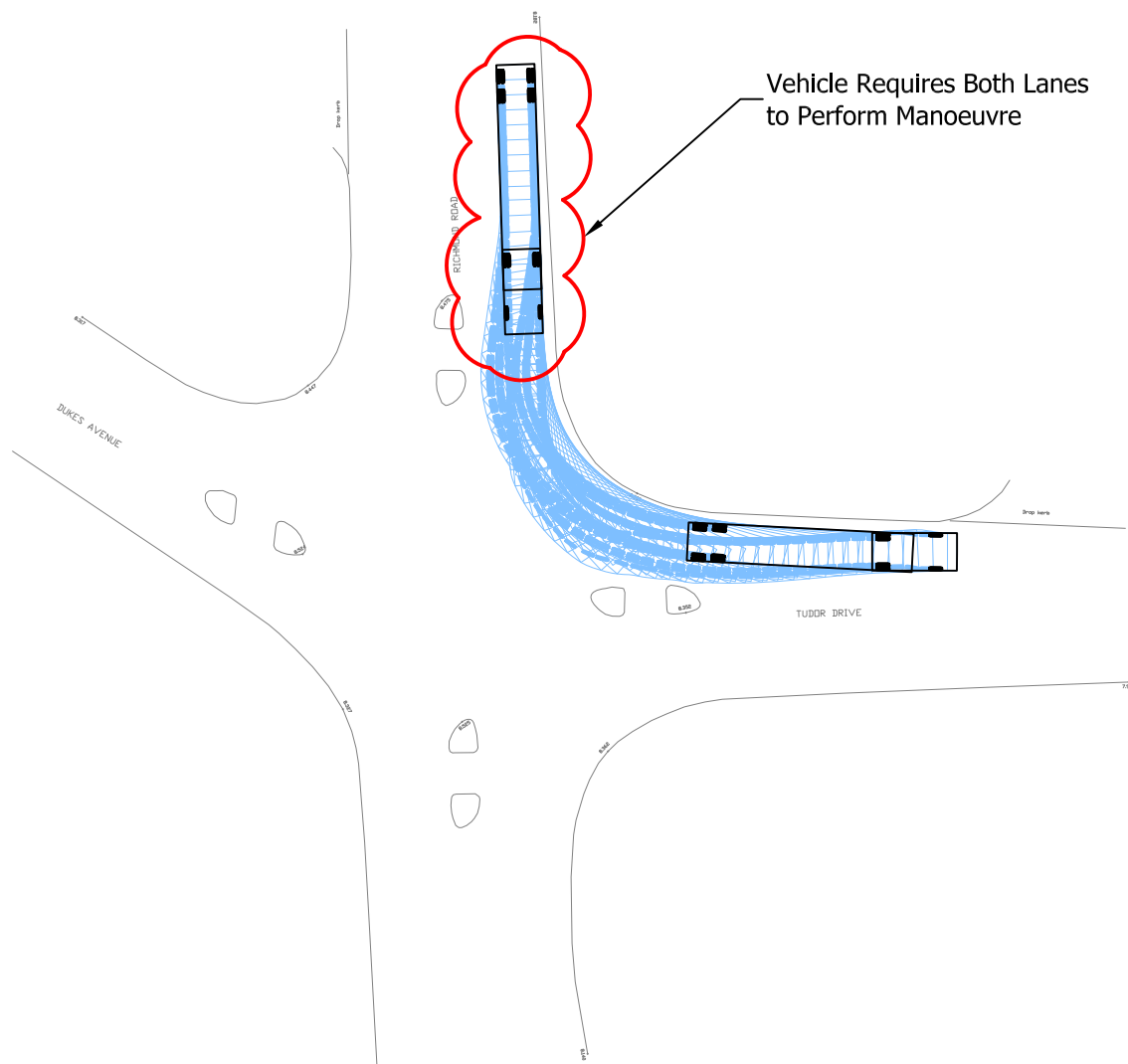


Generic 18m Low Loader
 Overall Length 17.918m
 Overall Width 2.540m
 Overall Body Height 3.408m
 Min Body Ground Clearance 0.332m
 Max Track Width 2.520m
 Lock to Lock Time 6.00s
 Kerb to Kerb Turning Radius 6.400m



Generic 18m Low Loader
 Overall Length 17.918m
 Overall Width 2.540m
 Overall Body Height 3.408m
 Min Body Ground Clearance 0.332m
 Max Track Width 2.520m
 Lock to Lock Time 6.00s
 Kerb to Kerb Turning Radius 6.400m



This map is reproduced from Ordnance Survey material with the permission of Ordnance Survey on behalf of the Controller of Her Majesty's Stationery Office © Crown copyright. Unauthorised reproduction infringes Crown copyright and may lead to prosecution or civil proceedings. Mayer Brown Ltd. Licence No - AL 100002189



Mayer Brown Limited
 Lion House
 Oriental Road Woking Surrey GU22 8AR
 Telephone 01483 750 508 Fax 01483 750 437
 wokingoffice@mayerbrown.co.uk www.mayerbrown.co.uk

client
BERKELEY HOLMES LTD

project
LATCHMERE HOUSE, RICHMOND

title
**18m LOW LOADER
 ENTERING/EXITING RICHMOND ROAD
 FROM/TO TUDOR DRIVE**

| | | | | | |
|----------------|--------------------------------|----------|-----------------------|------------|-----|
| scale | 1:500@A3 | drawn by | OAN | checked by | RDG |
| date | AUGUST 2015 | cad file | Master 2015-08-25.DWG | | |
| drawing number | BHLATCHMERE(CMP).1/TK09 | | | rev. | |