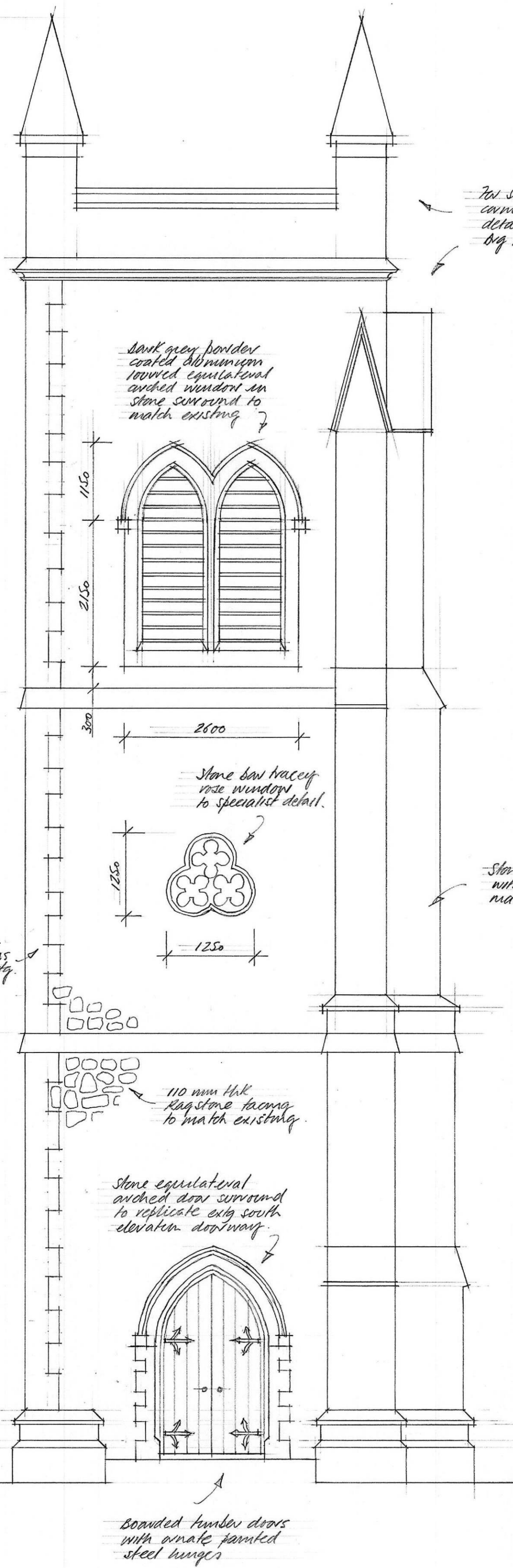


Proposed Tower extension 15000

existing tower



7m stone pinnacle, cornice, string, coping details refer to org No 1050/SK 01.

Dark grey powder coated aluminium louvred equilateral arched window in stone surround to match existing

Stone bow tracery rose window to specialist detail.

Stone quoined buttresses with ragstone infill to match existing.

Stone quoins to match exty.

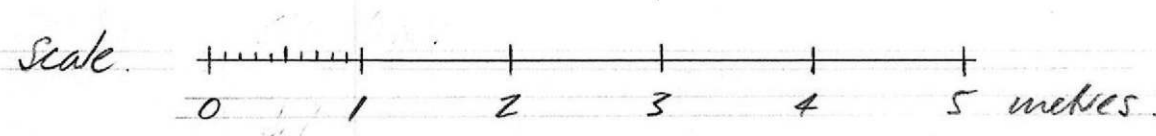
110 mm thick ragstone facing to match existing.

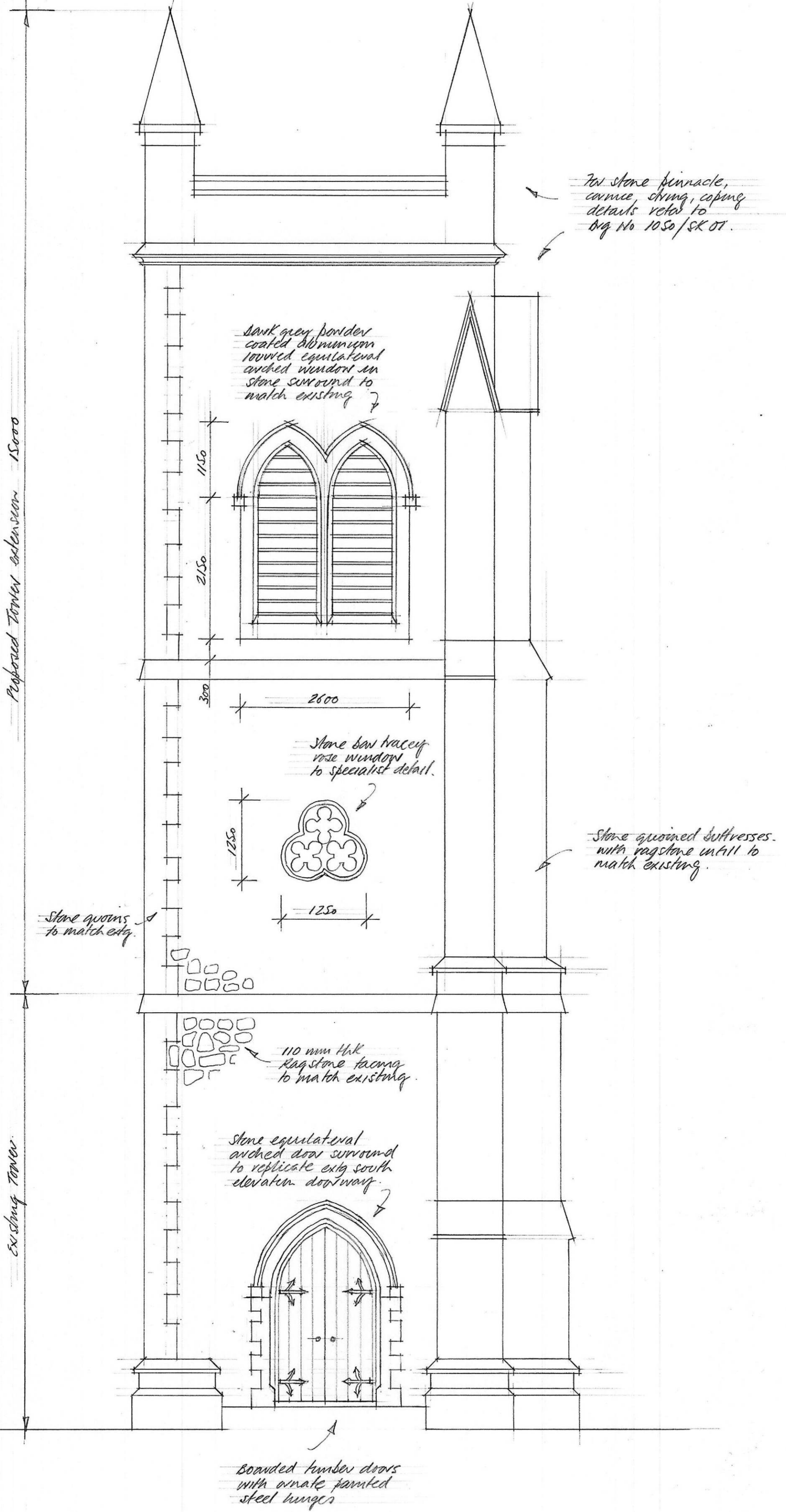
Stone equilateral arched door surround to replicate exty south elevation doorway.

Boarded timber doors with ornate painted steel hinges

North Elevation Main Tower. Christchurch Teddington.

Org No 1050/SK 02





North Elevation Main Tower. Christ Church Teddington.

Org No 1050/SK 02

