

ELEVATION AA



KINGSWOOD COURT ALBANY PASSAGE HOUSE 1 HOUSE 2 HOUSE 3 HOUSE 4 MARCHMONT ROAD

ELEVATION BB



ALBION HOUSE HOUSE 4 HOUSE 3 HOUSE 2 HOUSE 1 ALBANY PASSAGE



LOCATION PLAN
N
1:1000

Drawing Note:

The trees along Marchmont Road to the front of the Silver Birches site have been visually omitted from the drawing to allow the front elevation of Silver Birches to be seen clearly in this drawing. See drawing 1443/P4 A for elevation AA with trees. Photos below show examples of architectural detailing in the locality. The design of Silver Birches draws on the architectural details, fenestration patterns and materials of the area in order to reinforce the diverse character of Marchmont Road.

Material key:

- 1. Hardwood entrance door
- 2. Self coloured acrylic render
- 3. Integrated slate roof pv panels
- 4. Pitched slate roof
- 5. Smooth facing brickwork
- 6. Double glazed timber sash windows
- 7. Brick / render detailing
- 8. Timber framed porch detail with slate roof
- 9. Double glazed timber framed sliding folding doors
- 10. Lead clad dormer windows

Photo 1:
Intricate timber porch.



Photo 2:
Decorative timber eaves detail.



Photo 3:
Slate roof with timber verge boards to gable end.



Photo 4:
Slate roof with lead lined, arched head dormers.

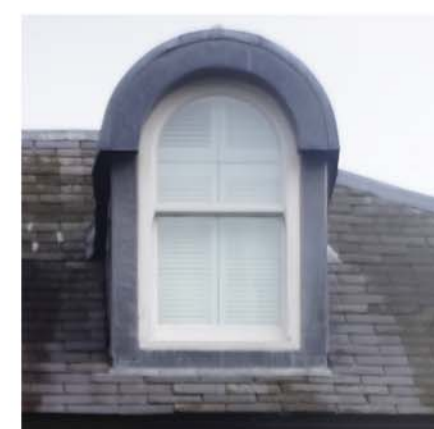


Photo 5:
Keystone head detail with white painted string moulding.

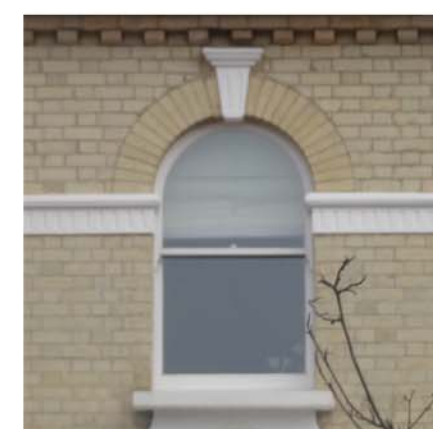


Photo 6:
Red brick window head detail.



Photo 7:
London stock brickwork with painted window surrounds.



A	NOV 2015	PLANNING ISSUE
REV	DATE	NOTES

PLANNING ISSUE

CORRIGAN + SOUNDY + KILADITI CHARTERED ARCHITECTS

93A HIGH STREET ETON WINDSOR BERKSHIRE SL4 6AF TEL: 01753 840519 FAX: 01753 868227

SILVER BIRCHES - MARCHMONT ROAD - RICHMOND 1:100@A1 25/07/14 CH

PROPOSED ELEVATIONS AA & BB 1443/ P3 A

NOT SCALE. THIS DRAWING IS TO BE USED IN CONJUNCTION WITH ALL OTHER RELEVANT ARCHITECTURAL DRAWINGS AND SPECIFICATIONS. ANY DIMENSIONS TO BE TAKEN FROM THE SPECIFICATIONS OF THE MATERIALS.