

**MAXIMUM GROSS EXTERNAL AREA OF BUILDING ZONE DEFINED IN DEVELOPMENT SPECIFICATION**

NOTE: HEIGHT FIGURES INDICATE MAXIMUM HEIGHT TO TOP OF ROOF PARAPETS OR EAVES. REFER TO DESIGN CODE FOR RESTRICTIONS ON THE EXTENT & LOCATION OF PROJECTIONS SUCH AS ROOF PLANT, FLUES, ETC. HEIGHTS INDICATED AS AOD BASED ON A TYPICAL SITE LEVEL OF 9.20M AOD.

Project  
**REEC Richmond Education & Enterprise Campus**  
 Prepared for  
**Richmond-upon-Thames College**  
 Client Location  
 Richmond upon Thames College | Egerton Road | Twickenham | Middlesex | TW2 7SJ

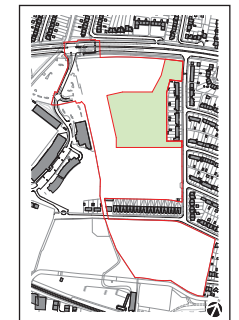


**HOK**  
 Qube, 90 Whitfield Street  
 London, W1T 4EZ, UK  
 t +44 (0) 20 7636 2006  
 f +44 (0) 20 7636 1987

All reproduction & intellectual property rights reserved © 2015

In Association with  
**FUSION PM**  
 Project Management  
 9 Springfield Lyons Approach, Chelmsford, Essex, CM2 5LB  
**VALIDUS LM**  
 Project Management  
 90 Long Acre, Covent Garden, London WC2E 9RZ  
**CASCADE CONSULTING**  
 Environmental Consultants  
 The Courtyard, Ladycross Business Park, Hollow Lane, Dormansland, Surrey RH17 6PB  
**CGMS CONSULTING**  
 Planning Consultants  
 140 London Wall, London EC2 5DN

**KEYPLAN**



This drawing incorporates Ordnance Survey Information © Crown copyright and database rights 2014 Ordnance Survey 100019441

Do not scale dimensions from drawings

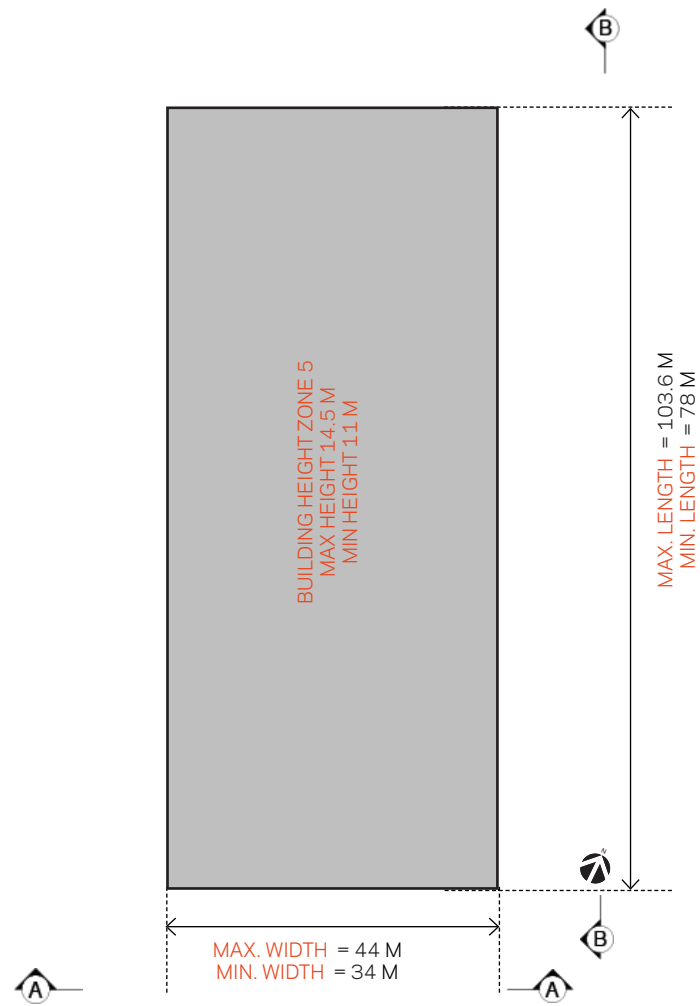
No.	Description	Date
-	OPA SUBMISSION	2015.06.15
A	OPA REVISION	2015.11.17

Drawn by: æ Reviewed by: AA  
 Scale: 1:1000 @ A3  
 Project No: 12.33036

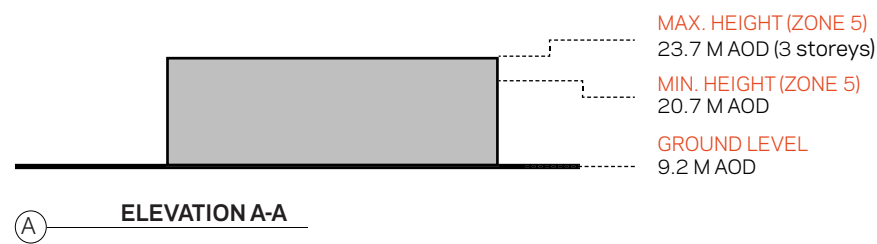
Sheet Title:  
**Schools Development Zone**  
**Building Zone Parameter Plan 2**

Original drawing is A3. Do not scale this drawing.  
 Sheet Number:

**PL-12** **A**



**PLAN**



**SCHOOLS BUILDING ZONE**