

Top of the enclosure 8.9 mAOD
when in the normal lowest angle

This will typically be the highest
elevation for the enclosure during
operations since higher tides cause
the system to tilt and lower the
generator enclosure

Typically the enclosure only rise
higher in times of flood

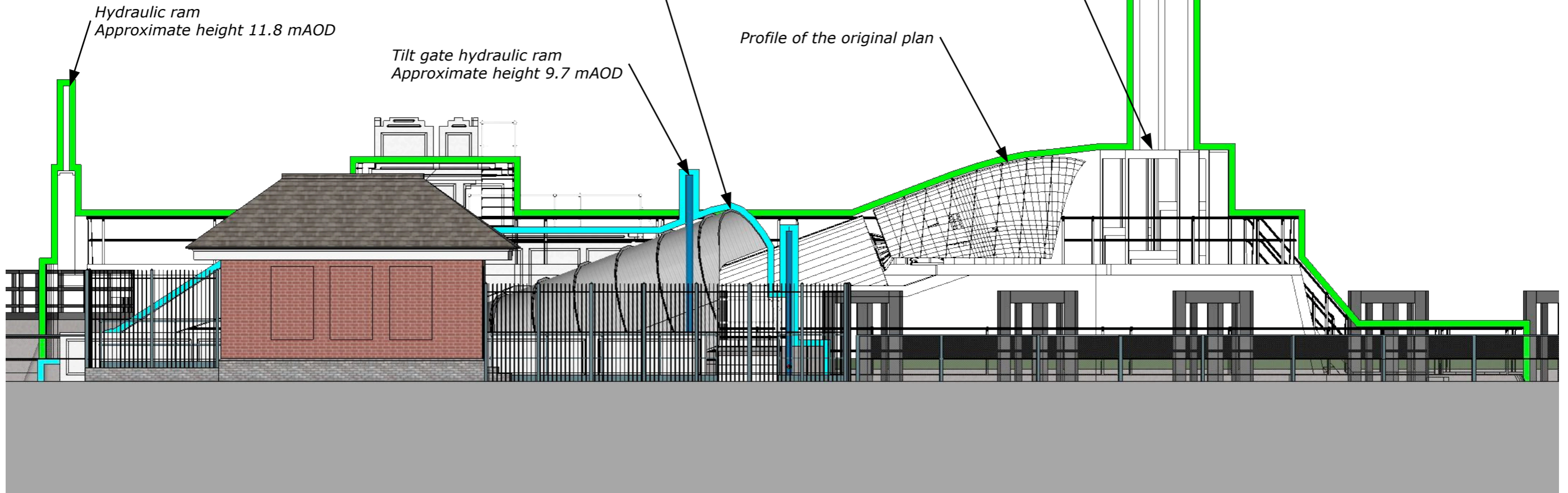
Hydraulic Rams
Approximate height 14.3 mAOD

Sluice gate frames from the original plan
Approximate height = 10.3 mAOD

Profile of the original plan

Hydraulic ram
Approximate height 11.8 mAOD

Tilt gate hydraulic ram
Approximate height 9.7 mAOD



Green - Original design
Light Blue - New design

