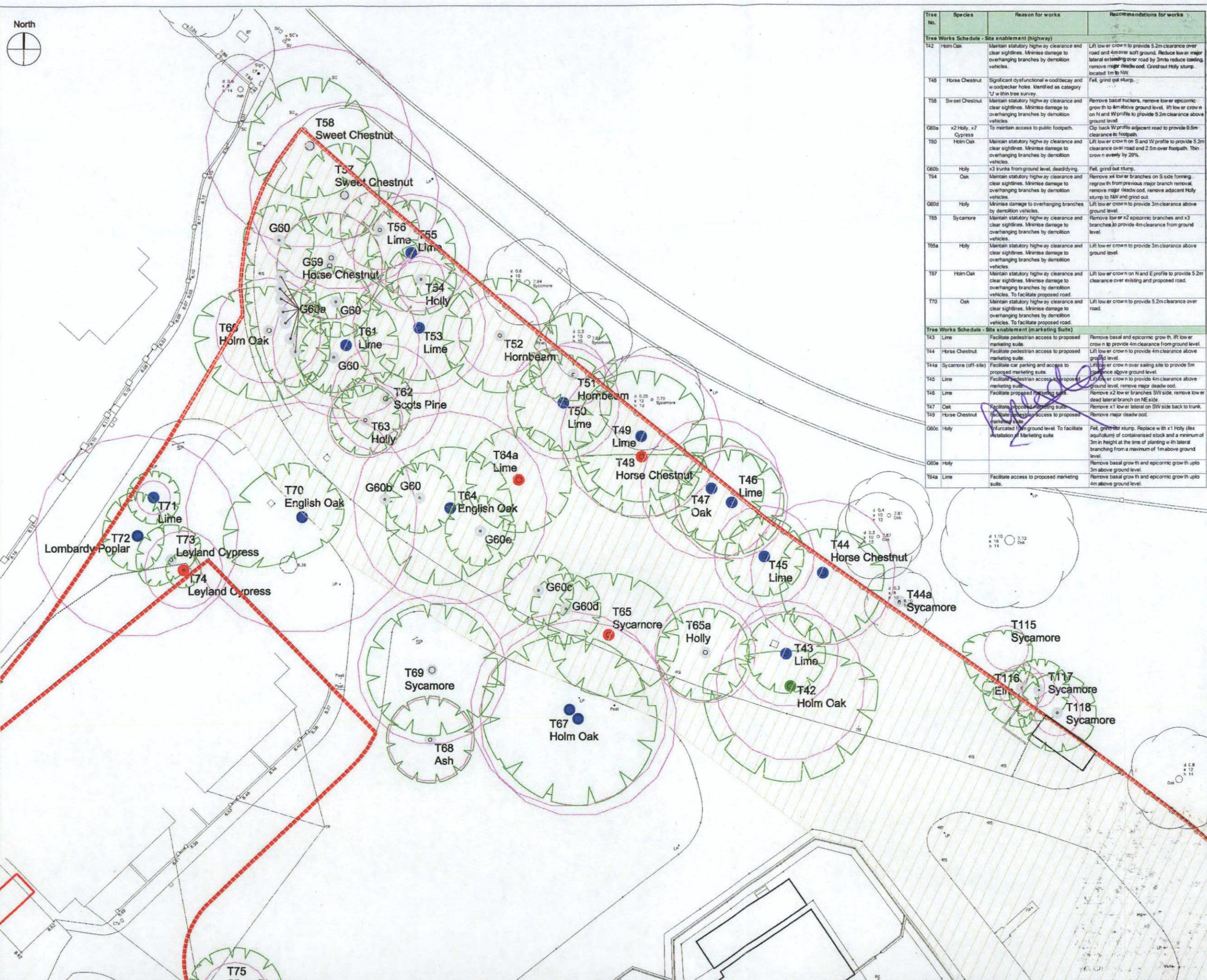


North



Tree No.	Species	Reason for works	Recommendations for works
<b>Tree Works Schedule - Site enablement (highway)</b>			
T42	Horn Oak	Maintain statutory highway clearance and clear sightlines. Minimize damage to overhanging branches by demolition vehicles.	Lift low crown to provide 5.2m clearance over road and 4m over soft ground. Reduce low or major lateral overhanging over road by 3m to reduce loading. Remove major deadwood. Grind out Holly stump - located 1m to NW.
T48	Horse Chestnut	Significant dysfunctional wood decay and woodpecker holes. Identified as category 17 within tree survey.	Fell, grind out stump.
T58	Sweet Chestnut	Maintain statutory highway clearance and clear sightlines. Minimize damage to overhanging branches by demolition vehicles.	Remove basal trunks, remove low or epicormic growth to 4m above ground level. Lift low crown on N and W profile to provide 5.2m clearance above ground level.
G60a	x2 Holly, x7 Cypress	To maintain access to public footpath.	Cip back W profile adjacent road to provide 0.5m clearance to footpath.
T60	Horn Oak	Maintain statutory highway clearance and clear sightlines. Minimize damage to overhanging branches by demolition vehicles.	Lift low crown on S and W profile to provide 5.2m clearance over road and 2.5m over footpath. Thin crown evenly by 20%.
G60b	Holly	x3 trunks from ground level, dead/dying.	Fell, grind out stump.
T54	Oak	Maintain statutory highway clearance and clear sightlines. Minimize damage to overhanging branches by demolition vehicles.	Remove x4 low or branches on S side forming regrowth from previous major branch removal. Remove major deadwood. Remove adjacent Holly stump to NW and grind out.
G60d	Holly	Maintain statutory highway clearance and clear sightlines. Minimize damage to overhanging branches by demolition vehicles.	Lift low crown to provide 3m clearance above ground level.
T65	Sycamore	Maintain statutory highway clearance and clear sightlines. Minimize damage to overhanging branches by demolition vehicles.	Remove low or x2 epicormic branches and x3 branches to provide 4m clearance from ground level.
T65a	Holly	Maintain statutory highway clearance and clear sightlines. Minimize damage to overhanging branches by demolition vehicles.	Lift low crown to provide 3m clearance above ground level.
T67	Horn Oak	Maintain statutory highway clearance and clear sightlines. Minimize damage to overhanging branches by demolition vehicles. To facilitate proposed road.	Lift low crown on N and E profile to provide 5.2m clearance over existing and proposed road.
T70	Oak	Maintain statutory highway clearance and clear sightlines. Minimize damage to overhanging branches by demolition vehicles. To facilitate proposed road.	Lift low crown to provide 5.2m clearance over road.
<b>Tree Works Schedule - Site enablement (marketing suite)</b>			
T43	Lime	Facilitate pedestrian access to proposed marketing suite.	Remove basal and epicormic growth. Lift low crown to provide 4m clearance from ground level.
T44	Horse Chestnut	Facilitate pedestrian access to proposed marketing suite.	Lift low crown to provide 4m clearance above ground level.
T44a	Sycamore (off-site)	Facilitate car parking and access to proposed marketing suite.	Lift low crown over sailing site to provide 5m clearance above ground level.
T45	Lime	Facilitate pedestrian access to proposed marketing suite.	Lift low crown to provide 4m clearance above ground level. Remove major deadwood.
T46	Lime	Facilitate proposed marketing suite.	Remove x2 low or branches SW side. Remove low or dead lateral branch on NE side.
T47	Oak	Facilitate proposed marketing suite.	Remove x1 low or lateral on SW side back to trunk.
T48	Horse Chestnut	Facilitate pedestrian access to proposed marketing suite.	Remove major deadwood.
G60c	Holly	Furcated from ground level. To facilitate installation of Marketing suite.	Fell, grind out stump. Replace with x1 Holly (flex equivalent of containerised stock and a minimum of 2m in height at the time of planting with lateral branching from a maximum of 1m above ground level.
G60e	Holly		Remove basal growth and epicormic growth upto 3m above ground level.
T64a	Lime	Facilitate access to proposed marketing suite.	Remove basal growth and epicormic growth upto 4m above ground level.

**NOTES**  
 This drawing is the property of tree:fabrik. It must not be copied or reproduced without written consent. The original of this drawing was produced in colour - a monochrome copy should not be relied upon. Only figured dimensions are to be taken from this drawing.

**Contents**  
 This illustrative plan provides information in respect of planning permission 1412144/FUL (Royal Borough of Kingston) and planting permission 141048/FUL (London Borough of Richmond Upon Thames). The illustrative plan is intended to inform preliminary tree works required to facilitate demolition and preparation of the proposed Marketing Suite.

**Site Boundary**  
 - - - - - Indicative boundary

**Statutory Designations (trees)**  
 - - - - - Horn Common Conservation Area

**Tree Survey**  
 - - - - - Tree No.

**Notes**  
 Tree Works - All tree works are to be carried out in accordance with BS 3998 Tree Works - Recommendations (2010). These identified for removal or remedial works within this plan are to be completed prior to commencement of demolition, demolition or ground works. Prior to commencement of tree works, (a) all tree works must be agreed with the Local Planning Authority (b) all responsibilities under the Wildlife & Countryside Act (1981), as amended by the Countryside and Rights of Way Act 2000 must be observed. All recommendations or precautionary measures made by the Project Ecologist will be adopted by the tree contractor. Any trees to be felled shall be suit felled as a precautionary measure. No tree works are to take place within the bird nesting season (March to August) unless a survey undertaken by a suitably experienced person establishes that active nests are absent.

Tracing of vehicles within the RPA of related trees during tree works will be avoided unless existing hard standing is present to provide ground protection.

All stumps will be removed from site by the tree contractor unless otherwise agreed in writing by the client.

Tree Removal - felling in one place should only be carried out when there is no significant risk of damage to people, property or protected species. Where trunks or branches display features such as small rot holes, which bats could use for roosting trees will be removed in sections and lowered to the ground. Once felled any features should be checked for bats. If a bat or evidence of bats is found or suspected at any point during the tree work, all work to the tree must stop immediately and the local Natural England team or a suitable ecologist must be contacted for advice. Where the work is undertaken during the summer, the tree should remain on the ground and undisturbed overnight to allow any unborn bats to leave. If carried out during the winter months (November to March inclusive), the tree should be undisturbed for a minimum of five nights, during which at least one night the temperature should be above 7 degrees Celsius or as recommended by an Ecologist.

Grind out stump - the stump is to be ground out to the base of the stump and the resultant hole backfilled with good quality topsoil.

Crown Lift - pruning to achieve a desired vertical clearance above ground level (expressed in meters).

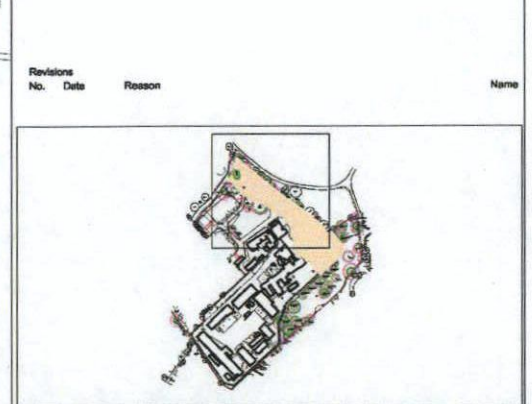
Reduce lateral - reduction in length (expressed in meters) by means of general shortening of limbs or branches to secondary live points to reduce and/or loading of retained lateral, whilst retaining the main framework of the crown.

Limbs - parts of a tree, including stem roots, branches, bark, other woody material and foliage, derived from the tree during tree work operations.

Arboricultural monitoring & recording  
 The work stages and associated scope of works for Arboricultural Monitoring forms Table 1.

Work stage and scope of arboricultural monitoring	
Work Stage	Scope of arboricultural supervision
Tree Removal - pre-commencement	Identify and mark trees with site manager and tree contractor of trees & vegetation to be removed or pruned to facilitate access & ground works.
Tree Removal - completion	On completion of the removal of any outstanding works or action required. On completion of any outstanding actions sign off on completion. Circulate report to all parties.

Revisions	No.	Date	Reason	Name



**tree:fabrik**  
 Lantien House  
 16 Lantien Street  
 Alton, Hampshire  
 GU34 1HG  
 T : 01420 593250  
 F : 01420 544243  
 E : alan@treefabrik.com

Project  
**LATCHMERE HOUSE**  
**RICHMOND** Drawing sheet size - A1

Drawing  
**FACILITATIVE TREE WORKS**  
**DEMOLITION**

Scale  
**1:500** Date **SEPT '15** Drawn **AR**

Drawing No.  
**tf 913s1/TW1/500** Revision

Preliminary  
 Issued for Planning Approval  
 Issued for Design/Information  
 Issued for Tender  
 As Built

