



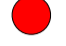


REFUSE/RECYCLING STORAGE NOTES

Refer to drawing 4721 3 001 location of all refuse storage.

Key

-  Triple timber bin store for Royal Borough of Kingston to accommodate 1x360l refuse bin, 1x360l blue lid recycling bin and 2x55L green recycling boxes. Approximate size 2150(w) x 970 (d) x 1270 (h)
-  Double timber bin store for Londo Borough of Richmond upon Thames to accommodate 1x360l refuse bin and 2x55L recycling boxes. Approximate size 1450(w) x 970(d) x 1270(h)
-  Communal bin store for Latchmere House
-  Refuse set-down for collection days (dimensions to bin store illustrated on plan)
-  Refuse truck pick-up location (dimensions to set down illustrated on plan)

H.01-H.63

Each house will be provided with a timber bin store to the front of each property. Refer to drawing 4721 3 003 for illustrations of the intended specification.

Generally, houses will have their refuse and recycling collected directly from these stores as they are adjacent to the road and accessible for the collection truck.

H44-46, H66-70, H66-67 and H64-65

Where this is not possible, a refuse set-down has been created for collection days. The residents of the affected houses will transfer their bins to these locations for collection. All set-down locations have been positioned so they do not require a carry/push distance of more than 30m from the bin store and 20m to the refuse collection vehicle.

Latchmere House H71-77




Each unit will transfer their refuse and recycling to the communal bin storage. This will provide 100l of solid waste storage per bedroom equating to 1600l of storage. This will be accommodated in two 1100l bins. Two 360l recycling bins will also be provided.

Refer to drawing 4721 3 003 for further information on the communal bin storage

CYCLE STORAGE NOTES

Refer to drawing 4721 3 001 location of all cycle storage.

Key

-  Cycle storage within a shed in the rear garden
-  Cycle storage within a garage
-  Cycle storage within the Latchmere House (H71-77) communal cycle store

H01-35, 37-63, 66 and 68-70

Each house will be provided with a shed capable of storing 2 cycles.

Refer to drawing 4721 3 005 for an illustration of the intended specification.

H36, H64-65 and 67

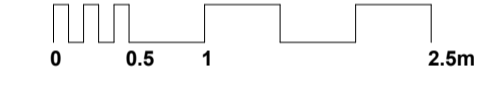
These houses will be provided with cycle storage for two cycles within a garage.

Refer to drawing 4721 3 004 for each garage layout.

Latchmere House (H71-77)

Each unit in Latchmere House will be allocated secure cycle storage for 2 cycles within a communal cycle store.

Refer to drawing 4721 3 004 for the communal cycle store layout and specification.

SCALE 1:50

FOR PLANNING

Rev	Description	Issued	Dwn	Chk
1	Planning Issue	11/03/2016	EL	SC

Client

Berkeley Homes West London

Project
Latchmere House
 Church Road, Richmond TW10 5HH
 and
 Latchmere Lane, Kingston KT2 5NX

Drawing

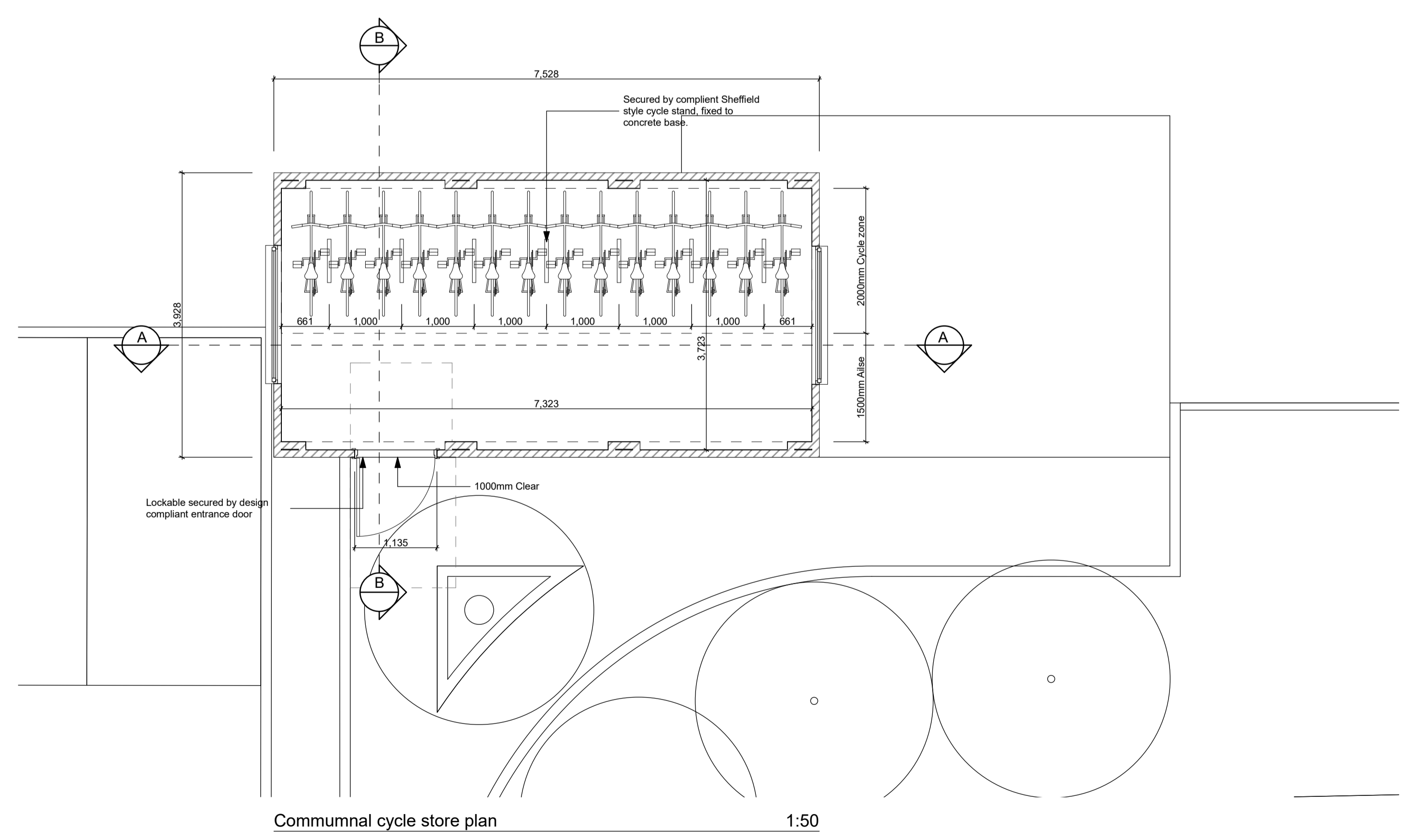
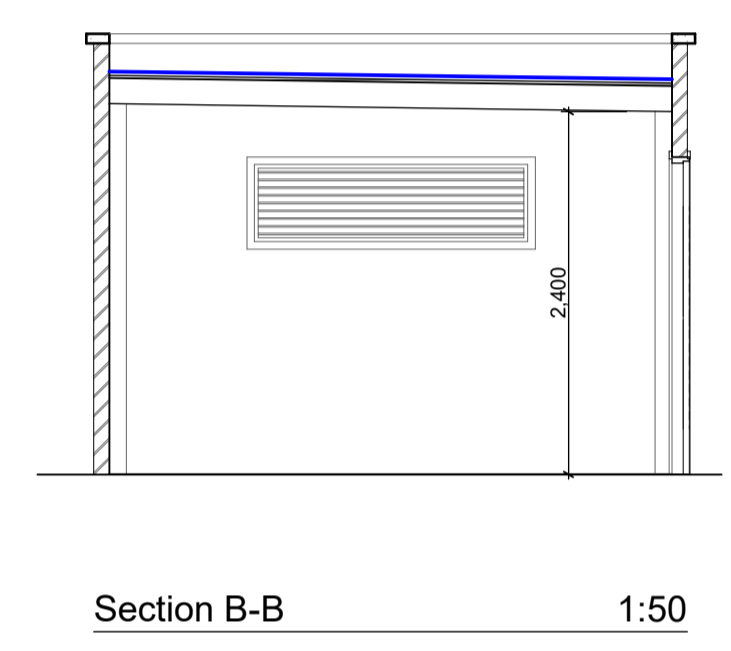
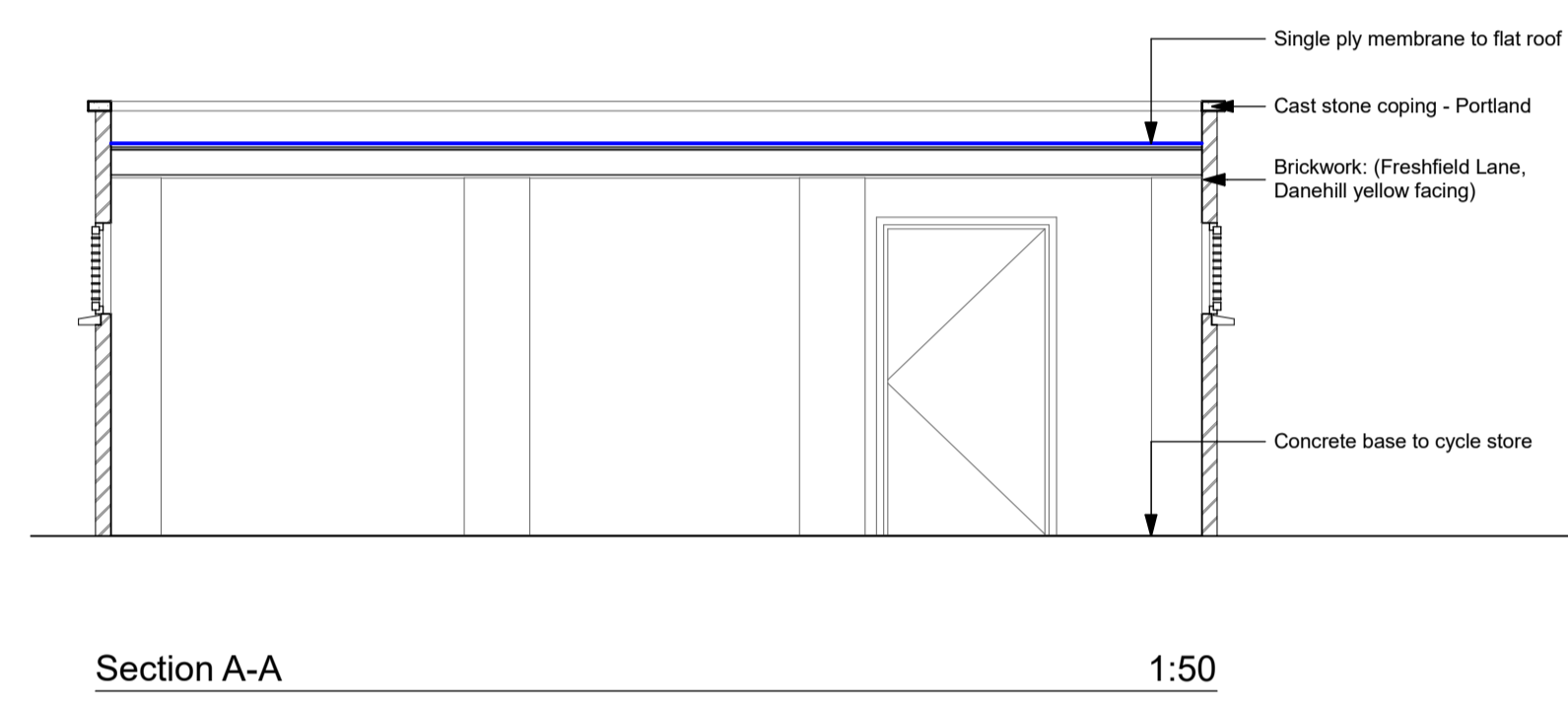
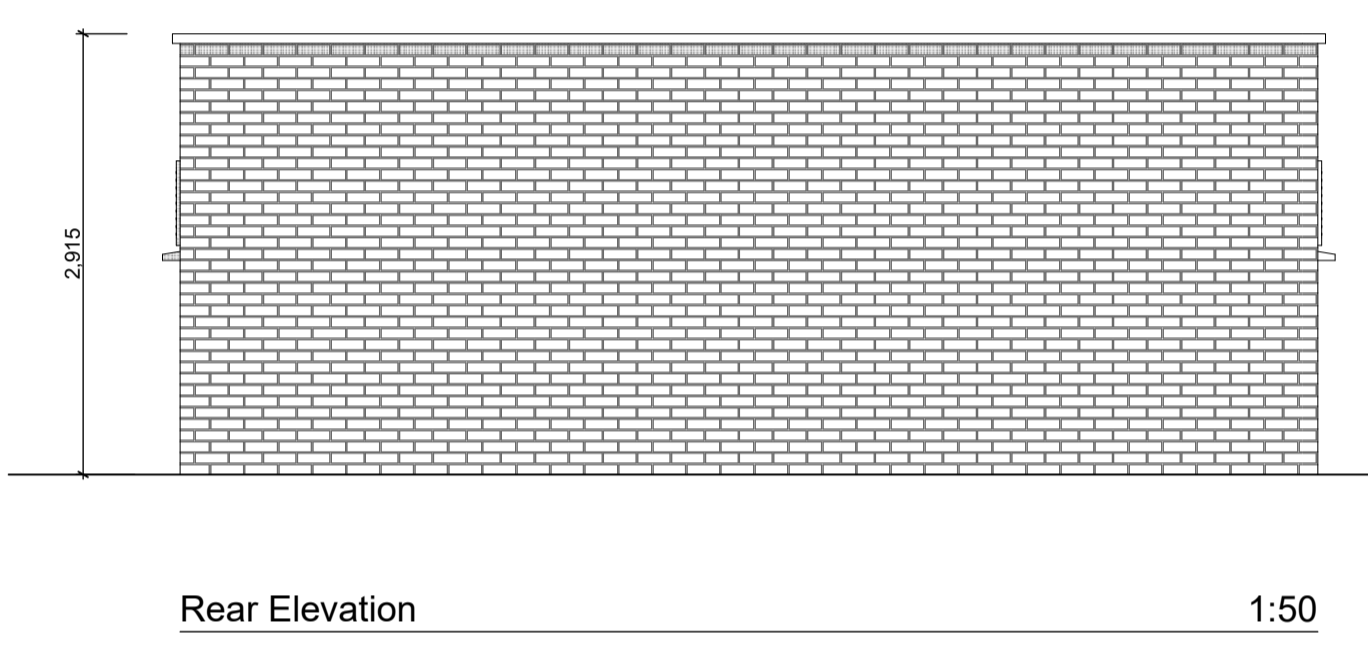
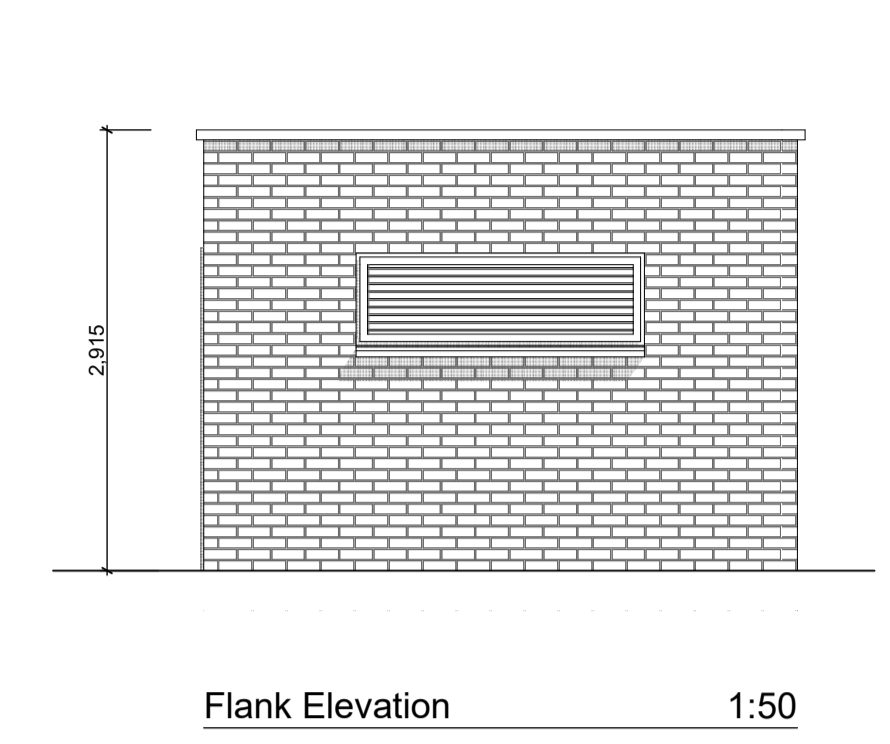
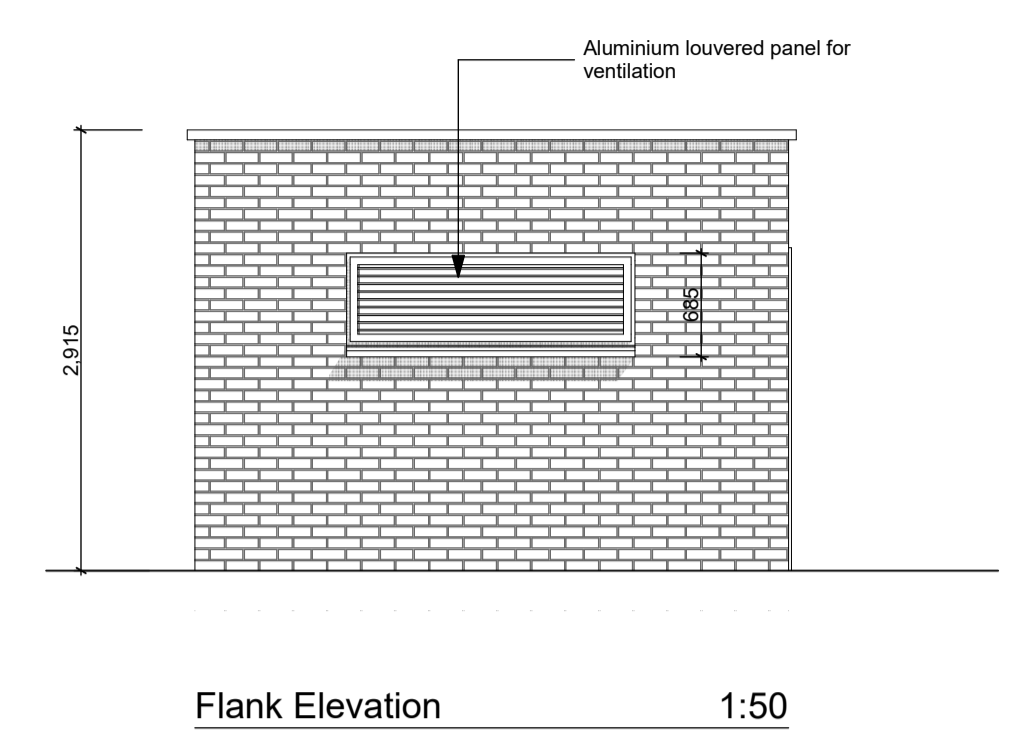
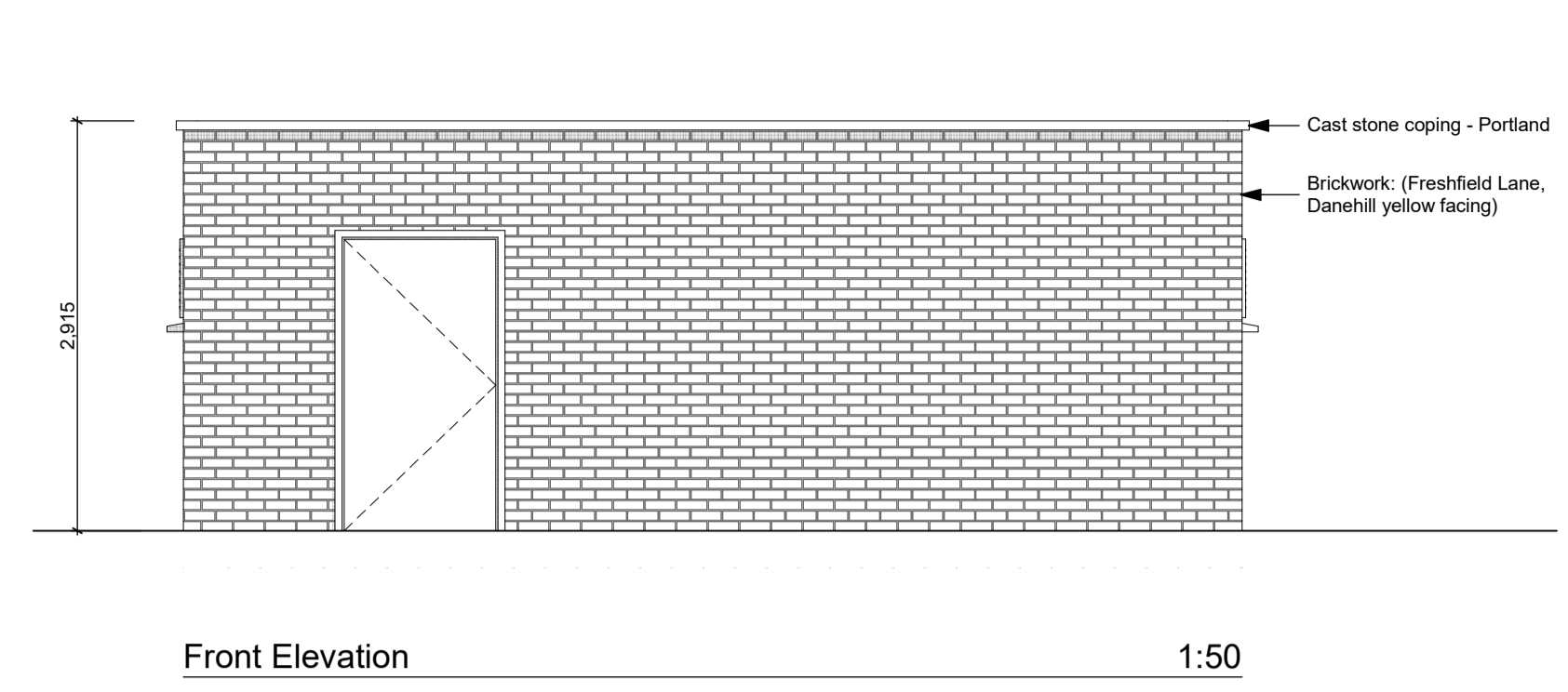
Planning Conditions - Latchmere House Communal Cycle Storage

Scale	Date	Drawn	Checked
1:50 @ A1	Mar '16	EL	SC

BrookesArchitects

Upstairs at The Grange, Bank Lane,
 London SW15 5JT
 T 020 8487 1223
 F 020 8876 4172
 E info@brookesarchitects.co.uk
 www.brookesarchitects.co.uk

Drawing No.	4721	4	005	Rev No.
				-



Shed for cycle storage to rear gardens