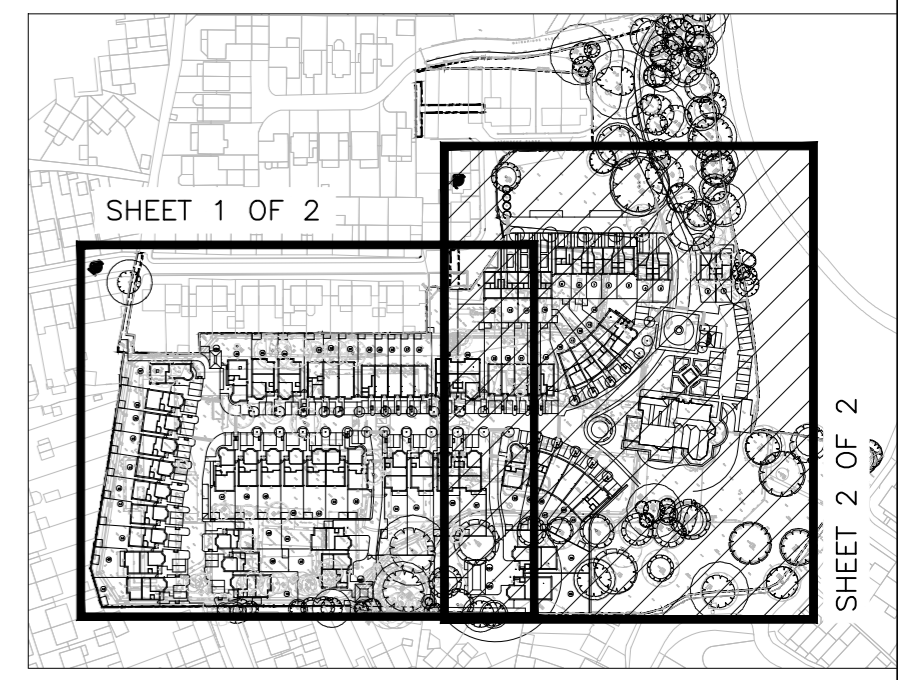


SEE PLAN A FOR CONTINUATION

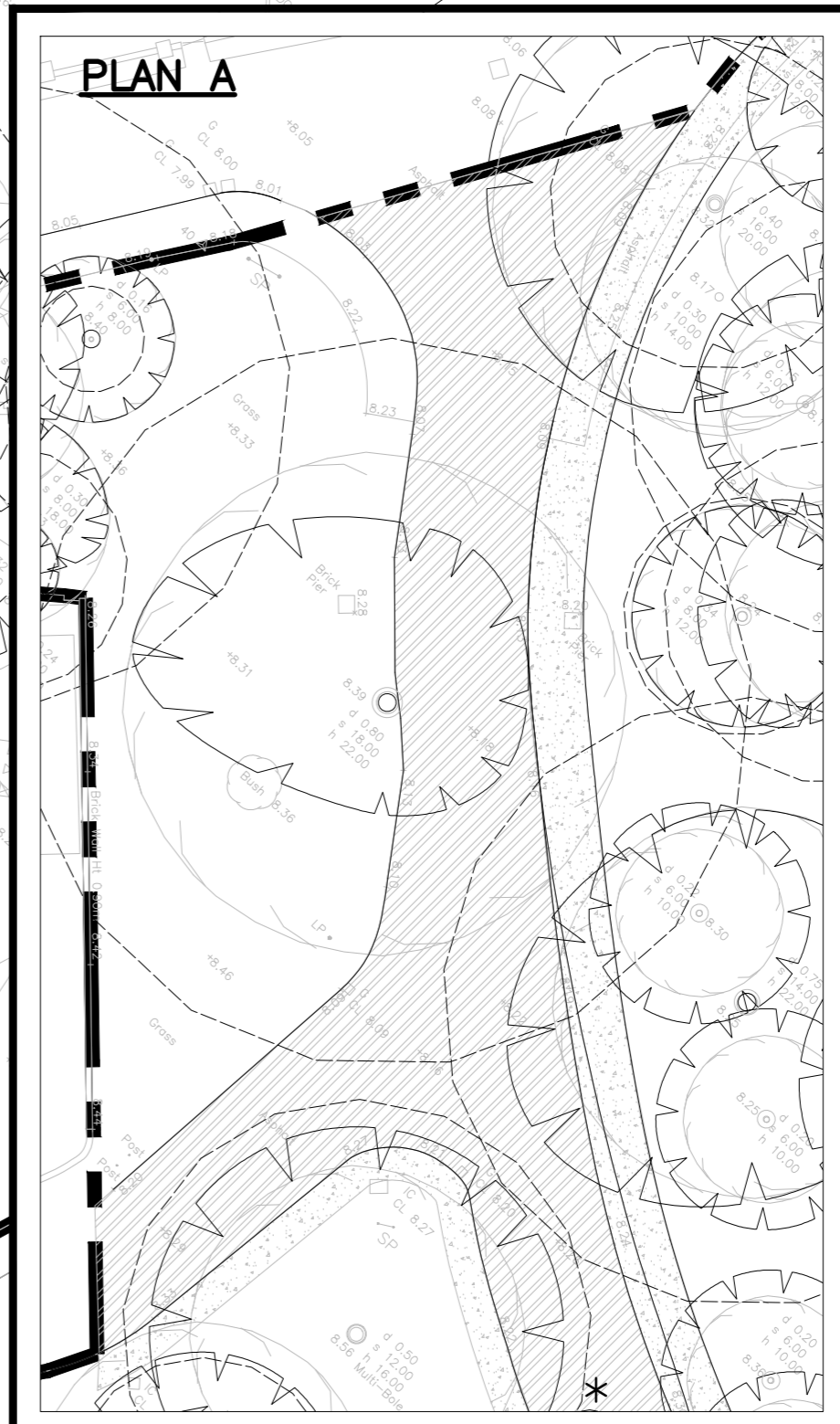
KEY PLAN



KEY:

HN0.1	VEHICULAR ACCESS, IMPERMEABLE ROAD SURFACE DENSE BITUMINOUS MACADAM
HN0.2	IMPERMEABLE VEHICULAR ACCESS 80x240x160mm MARSHALLS BLOCK PAVIORS OR SIMILAR APPROVED, COLOUR TBC
HN0.3	PERMEABLE PRIVATE VEHICULAR ACCESS 80x240x160mm MARSHALLS PRIORA BLOCK PAVIORS OR SIMILAR APPROVED, COLOUR TBC
HN0.4	IMPERMEABLE VEHICULAR ACCESS 80x240x160mm MARSHALLS BLOCK PAVIORS OR SIMILAR APPROVED, COLOUR TBC
HN0.5	IMPERMEABLE CAR PARKING BAYS 80x160x160mm MARSHALLS BLOCK PAVIORS OR SIMILAR APPROVED, COLOUR TBC
HN0.6	ARMBLE STRIP - GRANITE SETTS
HN0.7	IMPERMEABLE FOOTWAY DENSE SURFACE COURSE MACADAM
HN0.8	IMPERMEABLE SURFACE PRIVATE PATHS 80x160x160mm MARSHALLS BLOCK PAVIORS OR SIMILAR APPROVED, COLOUR TBC
HN0.9	IMPERMEABLE PRIVATE FOOTPATHS 450x450x38mm PAVING SLABS
HN0.10	IMPERMEABLE GARDEN PATIOS 450x450x38mm PAVING SLABS

FOR CONTINUATION OF EXTERNAL FINISHES LAYOUT, PLEASE SEE DRAWING No 1509/03/03



DO NOT SCALE HARD COPIES OF THIS DRAWING OR INTERROGATE CAD VERSIONS. ONLY STATED DIMENSIONS AND COORDINATES ARE TO BE RELIED UPON

COPYRIGHT RESERVED

GENERAL NOTES
1. THIS DRAWING IS TO BE READ IN CONJUNCTION WITH THE ARCHITECTS, SPECIALISTS AND ENGINEERS DRAWINGS AND SPECIFICATIONS. ANY DISCREPANCIES ARE TO BE REPORTED TO THE ARCHITECT/ENGINEER IMMEDIATELY.

TENDER ISSUE

LATEST REVISIONS ARE 'TAGGED' WITH THIS INDICATOR. HOWEVER, ALL USERS OF THIS DRAWING MUST SATISFY THEMSELVES OF ALL REVISIONS TO ANY PREVIOUS ISSUES, BY COMPARISON OF THIS DRAWING AGAINST OTHER ISSUES, AS IT CANNOT BE GUARANTEED THAT EVERY ITEM OF REVISION HAS BEEN 'TAGGED'.

K					
J					
H					
G					
F					
E					
D					
C					
B					
A					
Rev	Date	Description	Drawn & Checked	Checked	
Revisions					
Date	05.02.16	FIRST ISSUE	AZA	SC	

Project
LATCHMERE HOUSE

Title
**EXTERNAL FINISHES LAYOUT
SHEET 2 OF 2**

Architect
BROOKES ARCHITECTS

Client
**BERKELEY HOMES
(WEST LONDON) LIMITED**

RLT
RLT ENGINEERING CONSULTANTS LTD
CIVIL AND STRUCTURAL CONSULTING ENGINEERS
2 ST PETER'S COURT
MIDDLEBOROUGH
COLCHESTER, ESSEX, CO1 1WD
T: 01206 768655
F: 01206 768656
E: email@rltengcon.co.uk

ISO 9001 REGISTERED FIRM

Dwg No. 1509/03/04 Scales: 1:250 @ A1 Rev: