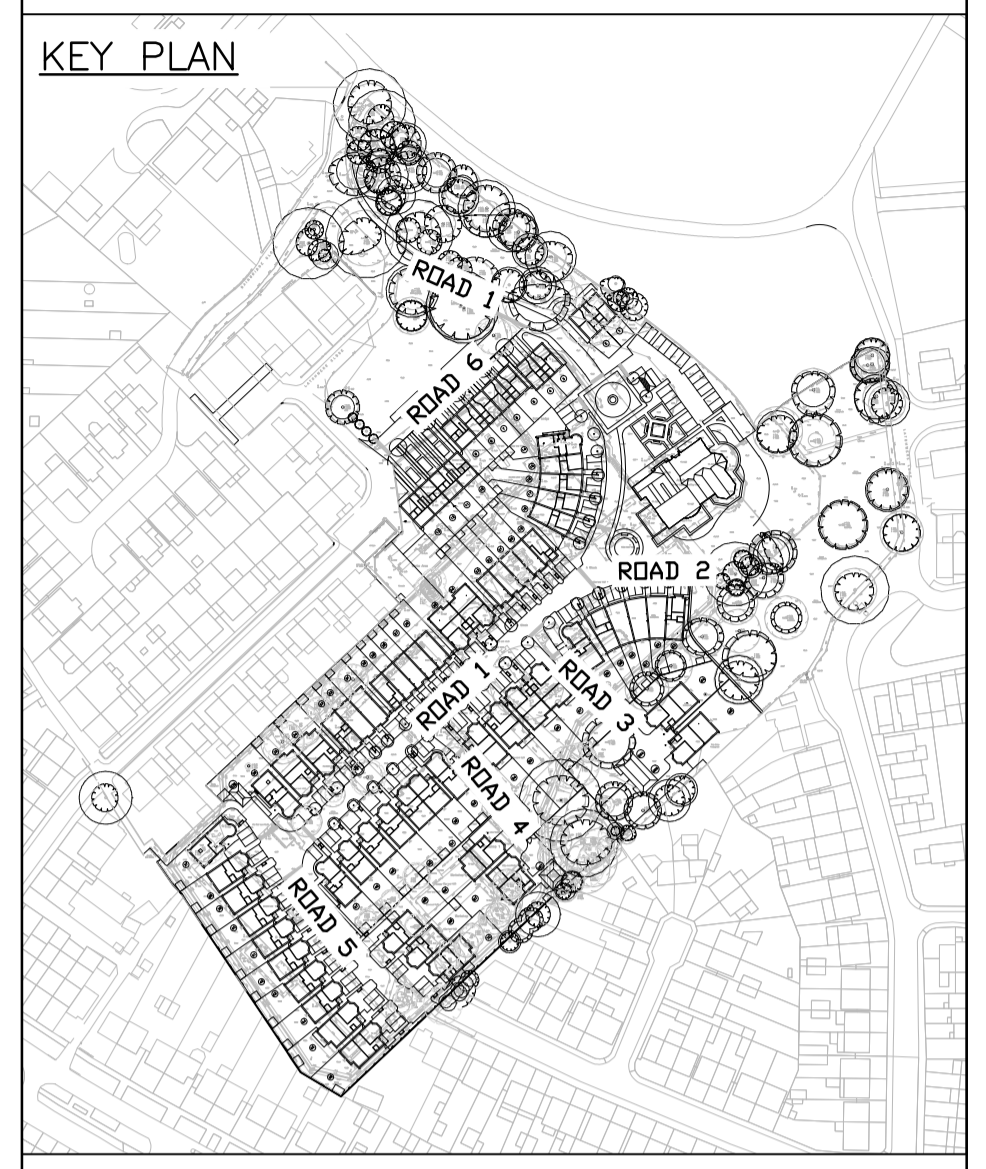


GENERAL NOTES
 1. THIS DRAWING IS TO BE READ IN CONJUNCTION WITH THE ARCHITECTS, SPECIALISTS AND ENGINEERS DRAWINGS AND SPECIFICATIONS. ANY DISCREPANCIES ARE TO BE REPORTED TO THE ARCHITECT/ENGINEER IMMEDIATELY.



KEY
 - - - - - EXISTING GROUND LEVEL
 - · - · - · PROPOSED CENTRE LINE
 ——— PROPOSED CHANNEL LEVEL

TENDER ISSUE

LATEST REVISIONS ARE 'TAGGED' WITH THIS INDICATOR. HOWEVER, ALL USERS OF THIS DRAWING MUST SATISFY THEMSELVES OF ALL REVISIONS TO ANY PREVIOUS ISSUES, BY COMPARISON OF THIS DRAWING AGAINST OTHER ISSUES, AS IT CANNOT BE GUARANTEED THAT EVERY ITEM OF REVISION HAS BEEN 'TAGGED'.

G			
F			
E			
D			
C			
B			
A			
Rev	Date	Description	Drawn & Checked
Revisions			DM SC
Date	05.02.16	FIRST ISSUE	
Project			

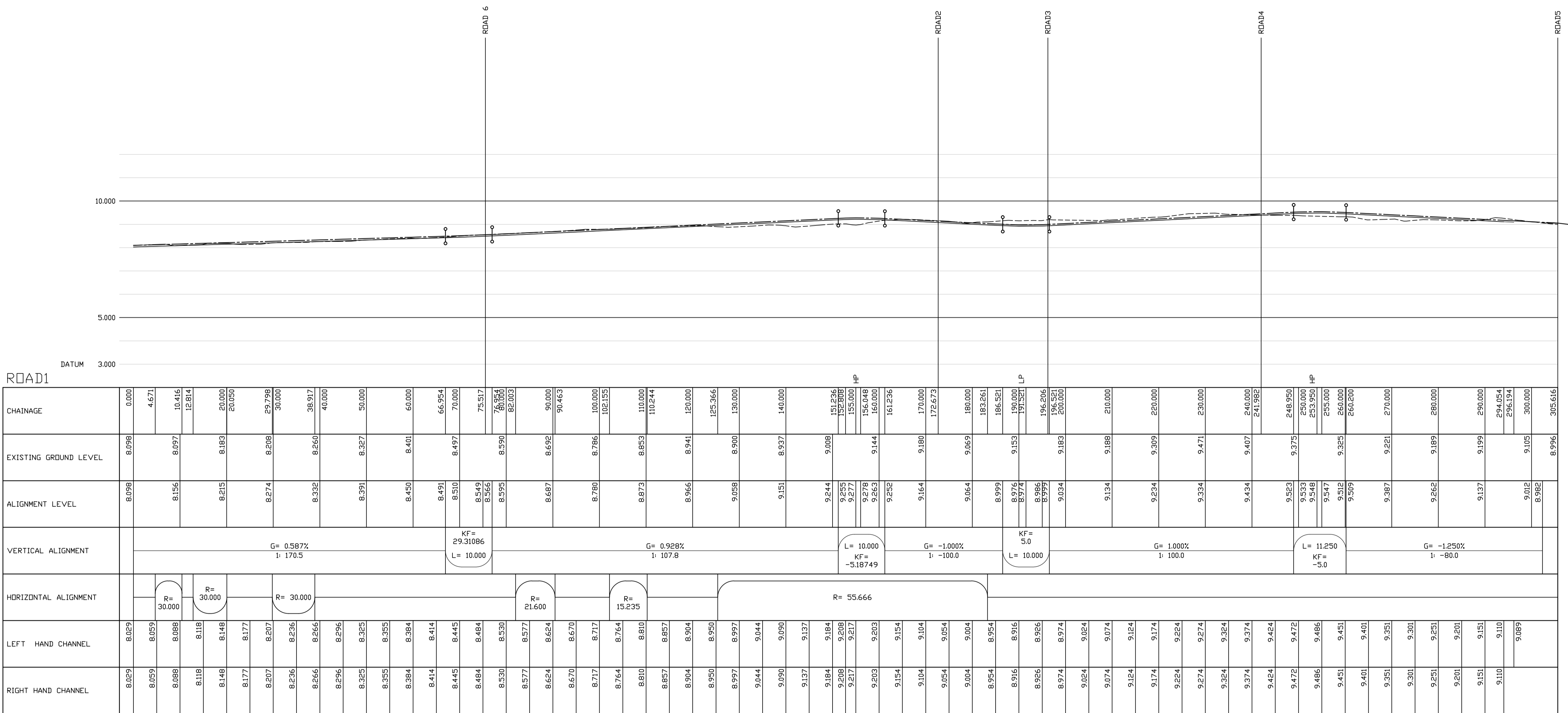
LATCHMERE HOUSE

Title
**PRIVATE ROAD
 LONGITUDINAL SECTIONS
 SHEET 1 OF 2**

Client
**BERKELEY HOMES
 (WEST LONDON) LIMITED**

Architect
BROOKES ARCHITECTS

RLT ENGINEERING CONSULTANTS LTD
 CIVIL AND STRUCTURAL CONSULTING ENGINEERS
 2 ST. PETER'S COURT
 MIDDLEBROUGH
 COLCHESTER, ESSEX, CO1 1WD
 T: 01206 768655
 F: 01206 768656
 E: email@rltengcon.co.uk



CHAINAGE	EXISTING GROUND LEVEL	ALIGNMENT LEVEL	VERTICAL ALIGNMENT	HORIZONTAL ALIGNMENT	LEFT HAND CHANNEL	RIGHT HAND CHANNEL
0.000	8.098	8.098			8.029	8.029
4.671					8.059	8.059
10.416	8.097	8.156		R=30.000	8.088	8.088
12.814					8.118	8.118
20.000	8.183	8.215		R=30.000	8.148	8.148
20.050					8.177	8.177
29.798	8.208	8.274	G= 0.587% I: 170.5		8.207	8.207
30.000					8.236	8.236
38.917	8.260	8.332			8.266	8.266
40.000					8.296	8.296
50.000	8.327	8.391			8.325	8.325
60.000	8.401	8.450			8.355	8.355
65.954					8.384	8.384
70.000	8.491	8.510			8.414	8.414
75.517	8.497	8.549	KF = 29.31086 L = 10.000		8.445	8.445
76.517		8.566			8.484	8.484
80.000	8.590	8.595			8.530	8.530
82.003					8.577	8.577
90.000	8.692	8.687	G= 0.928% I: 107.8	R=21.600	8.624	8.624
90.463					8.670	8.670
100.000	8.786	8.780			8.717	8.717
102.152					8.764	8.764
110.000	8.853	8.873			8.810	8.810
110.244					8.857	8.857
120.000	8.941	8.966			8.904	8.904
125.366					8.950	8.950
130.000	8.900	9.058			8.997	8.997
140.000	8.937	9.151			9.044	9.044
151.236	9.008	9.244	L= 10.000 KF = -5.18749	R=55.666	9.090	9.090
152.809		9.255			9.137	9.137
155.000		9.277			9.184	9.184
156.048		9.278			9.208	9.208
160.000	9.144	9.263			9.217	9.217
161.236		9.252			9.203	9.203
170.000	9.180	9.164	G= -1.000% I: -100.0		9.154	9.154
172.673					9.104	9.104
180.000	9.065	9.064			9.054	9.054
183.261					9.004	9.004
186.521	8.999	8.999			8.954	8.954
190.000	9.153	8.976			8.916	8.916
191.321		8.974	KF = 5.0 L = 10.000		8.926	8.926
196.206	9.183	8.995			8.974	8.974
196.521		9.034			9.024	9.024
200.000					9.074	9.074
210.000	9.188	9.134			9.124	9.124
220.000	9.309	9.234	G= 1.000% I: 100.0		9.174	9.174
230.000	9.471	9.334			9.224	9.224
240.000	9.407	9.434			9.274	9.274
241.982					9.324	9.324
248.950	9.375	9.523			9.374	9.374
250.000		9.533	L= 11.250 KF = -5.0		9.424	9.424
253.950		9.548			9.472	9.472
255.000	9.512	9.547			9.486	9.486
260.000	9.325	9.509			9.451	9.451
260.200					9.401	9.401
270.000	9.221	9.387	G= -1.250% I: -80.0		9.351	9.351
280.000	9.189	9.262			9.301	9.301
290.000	9.199	9.137			9.251	9.251
294.054					9.201	9.201
296.194					9.151	9.151
300.000	9.105	9.012			9.110	9.110
305.616	8.996	8.982			9.069	9.069