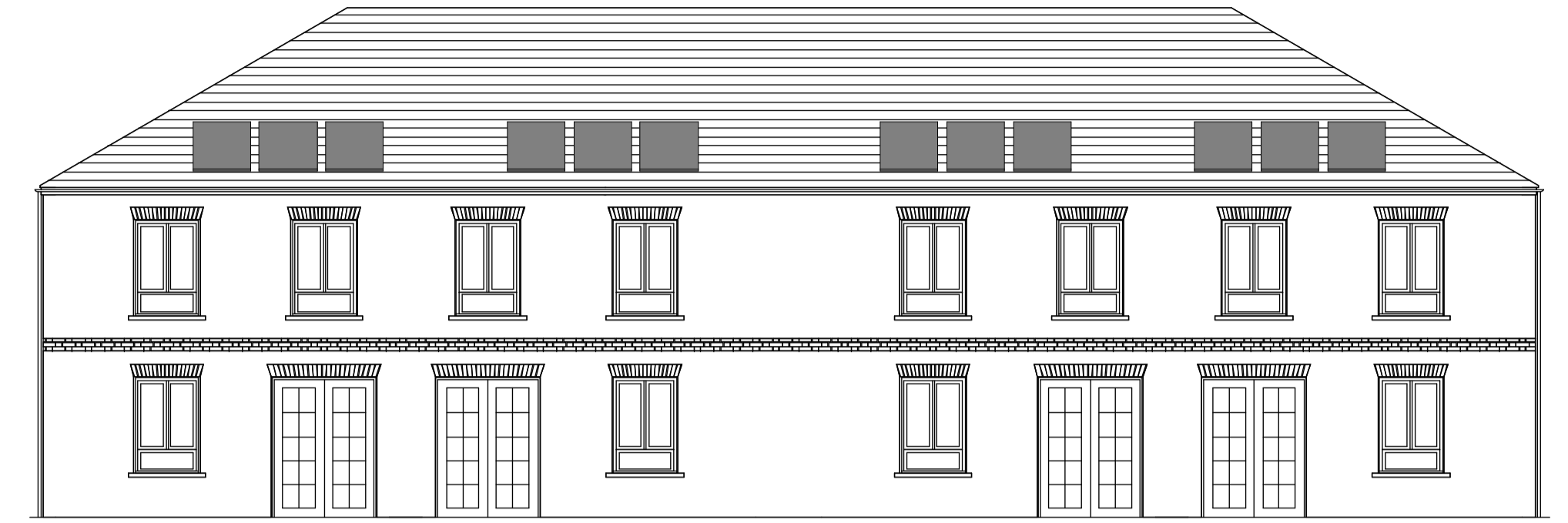




A1 - Southeast Elevation - Plots 1-4



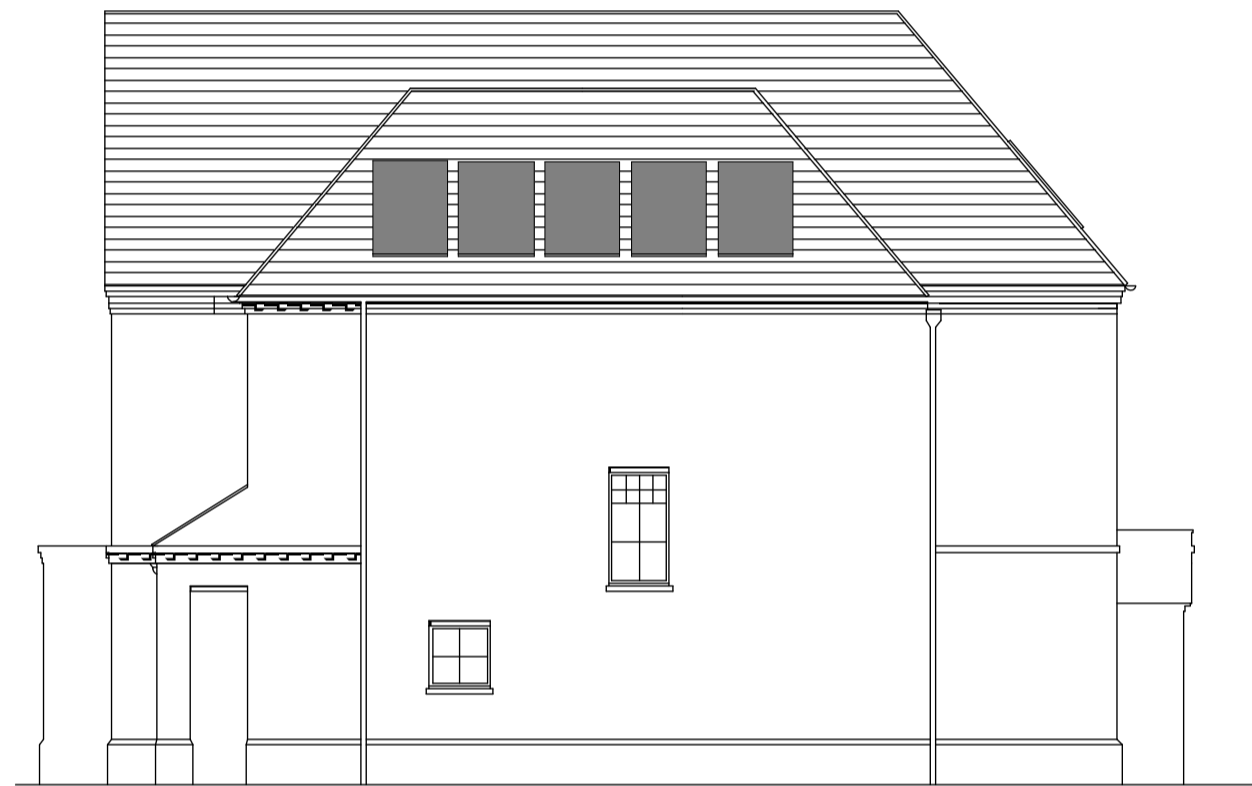
A1 + A2 - Southeast Elevation - Plots 5-9



A2 - Southeast Elevation - Plots 10-13



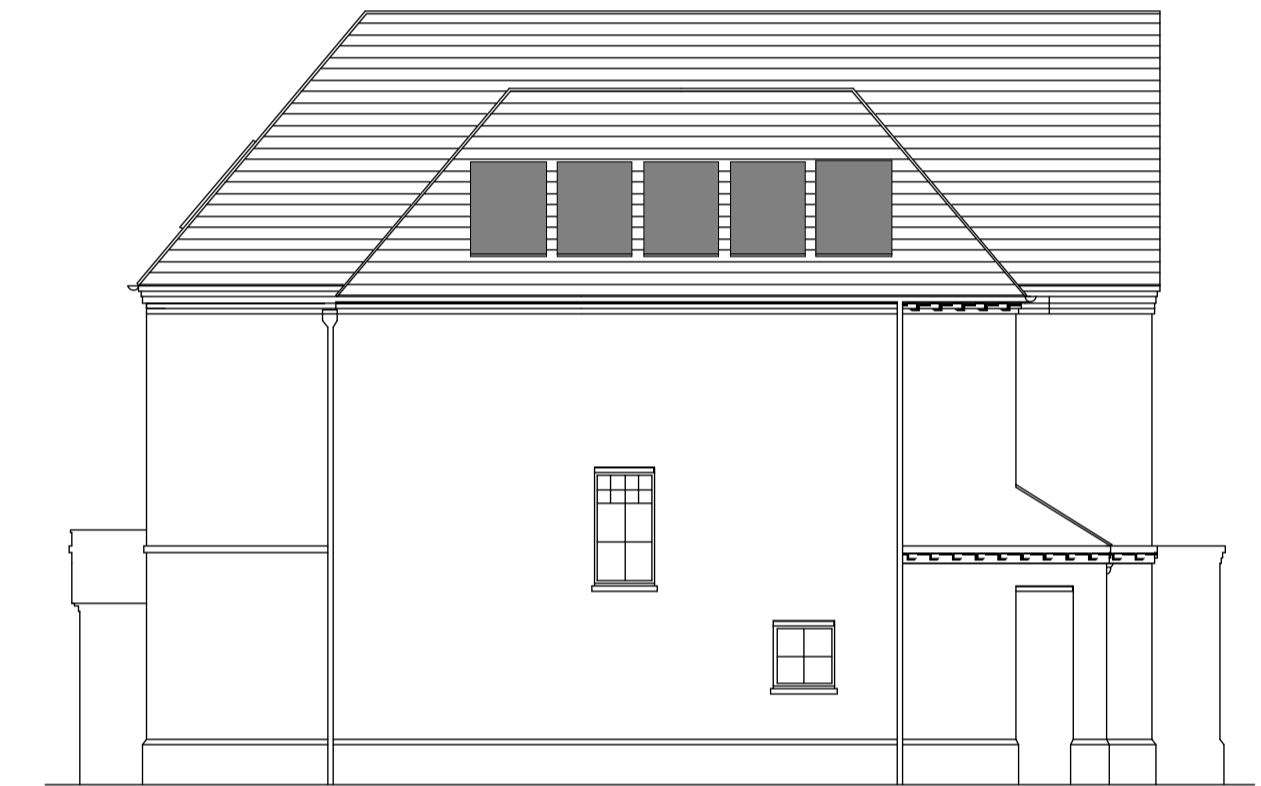
E2 - Southwest Elevation - Plots 34-35



E2 - Southwest Elevation - Plots 54-55



E2 - Southeast Elevation - Plot 66 & Northwest Elevation - Plot 70



E2 - Southeast Elevation - Plots 45-46



E1 - Southwest Elevation - Plot 36



E1 - Southeast Elevation - Plot 37



E1 - Southwest Elevation - Plots 47 & 58

GENERAL NOTES

Drawing to be read in conjunction with engineers the latest revision of:
 Drawing - Site_Pre_01 and document - 10594 Latchmere House
 Surrey PV Proposal by South-Facing

1640 x 992 x 40mm Solar Panel
 Surface fixed to pitched roof

PLANNING ISSUE

Rev	Description	Issued	Drawn	Checked
-	Planning Issue	12/05/2016	SC	MB
P1	Preliminary Issue	23/03/2016	EL	SC

Client
Berkeley Homes West London
 Project
Latchmere House
Church Road, Richmond TW10 5HH
and
Latchmere Lane, Kingston KT2 5NX

Drawing
Solar Panel Layouts - Sheet 1

Scale	Date	Drawn	Checked
1:100 @ A1	Mar '16	EL	SC

Brookes Architects

Upstairs at The Grange, Bank Lane,
 London SW15 5JT
 T 020 8487 1223
 F 020 8876 4172
 E info@brookesarchitects.co.uk
 www.brookesarchitects.co.uk

Drawing No.	Rev No.
4721 3 006	-