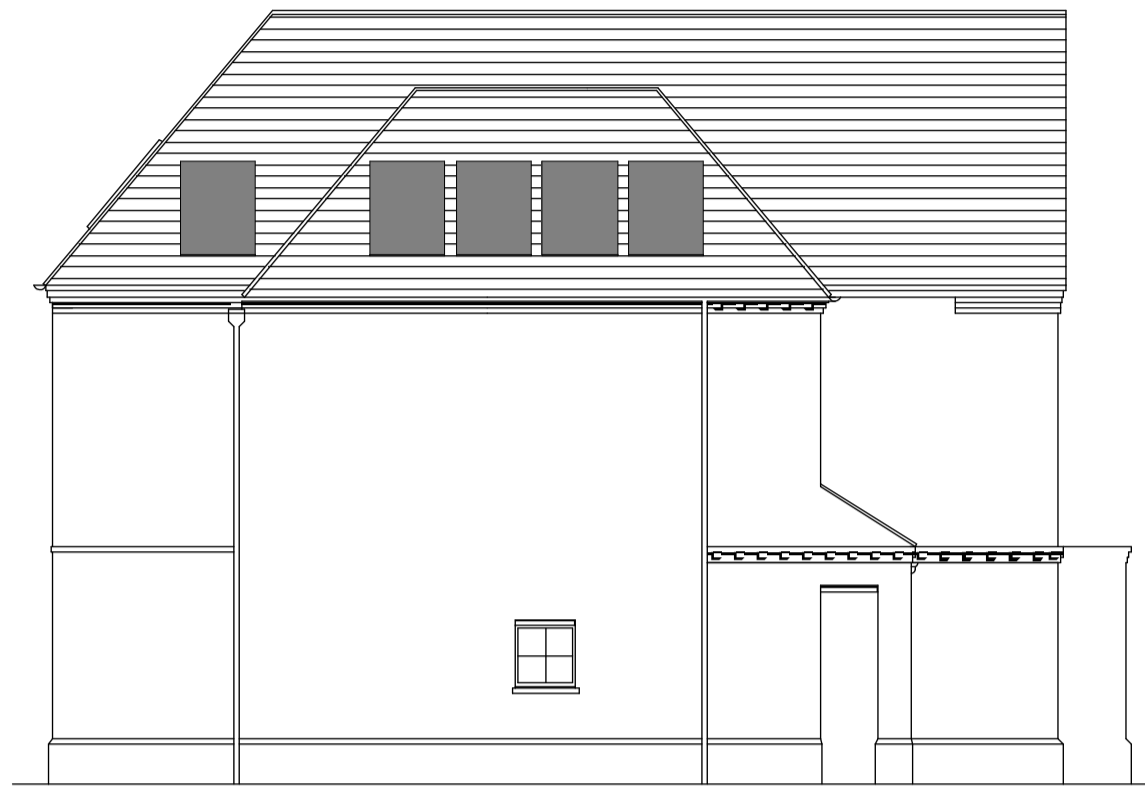
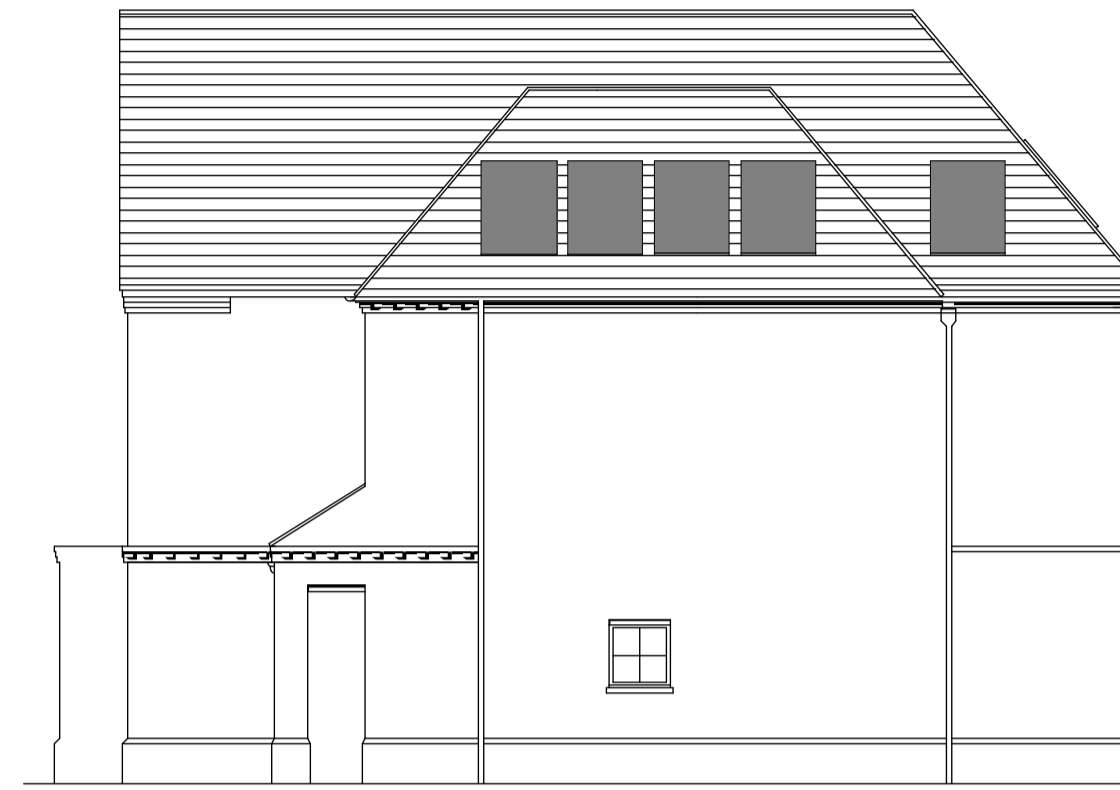


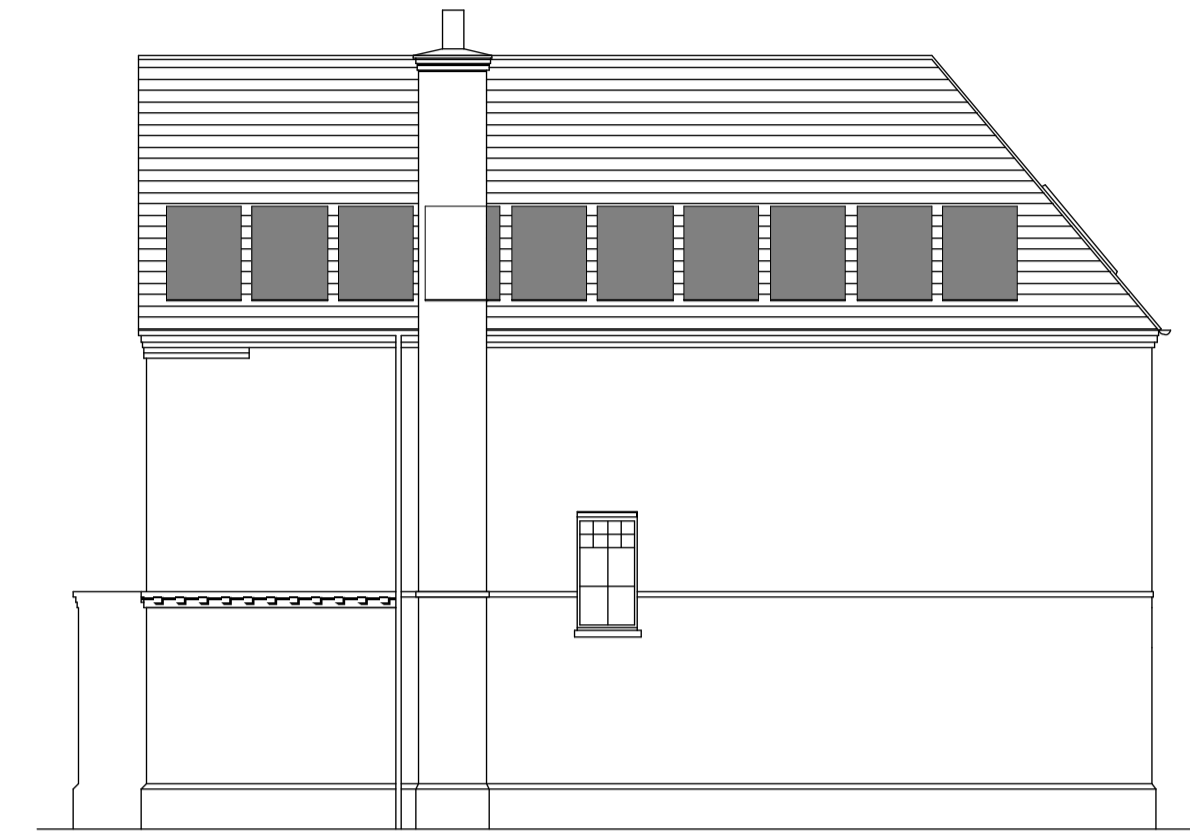
E1 - Southwest Elevation - Plot 53



C1 - Southeast Elevation - Plots 38-43



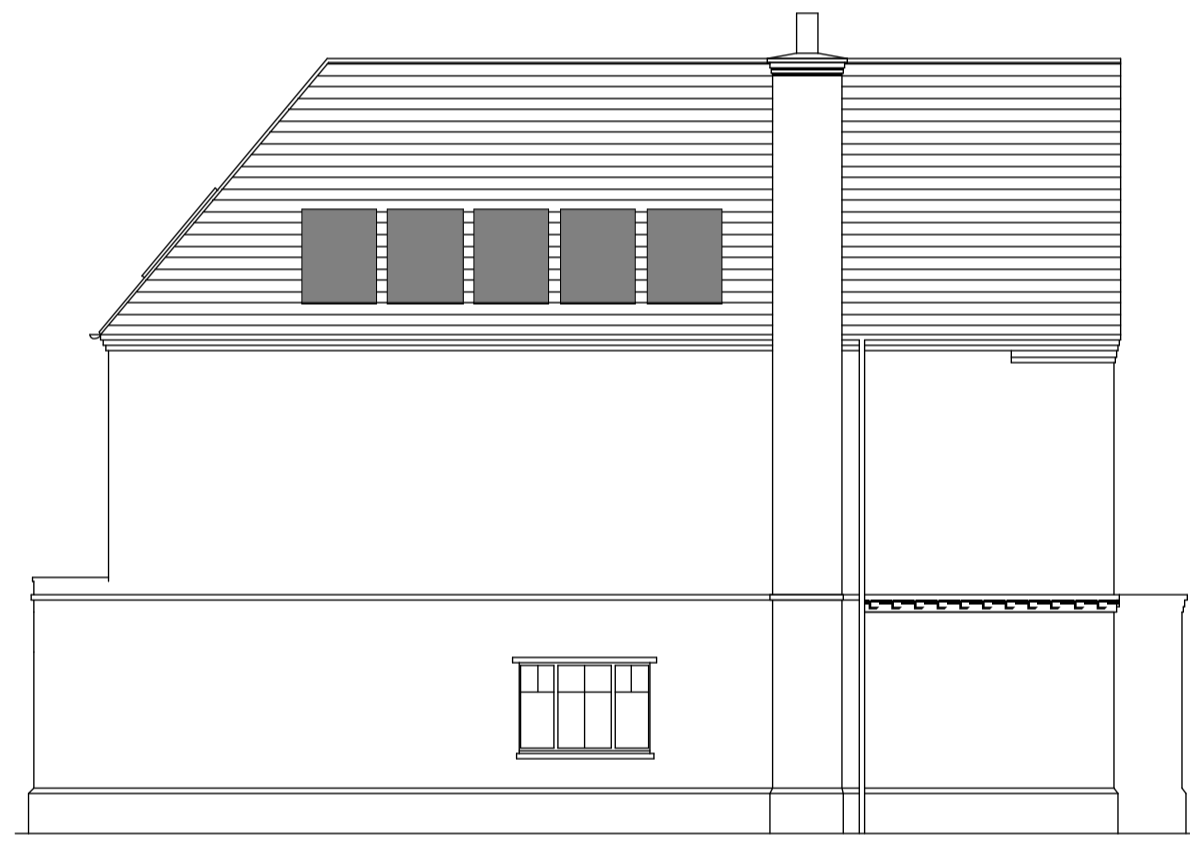
C1 - Southwest Elevation - Plots 58-51



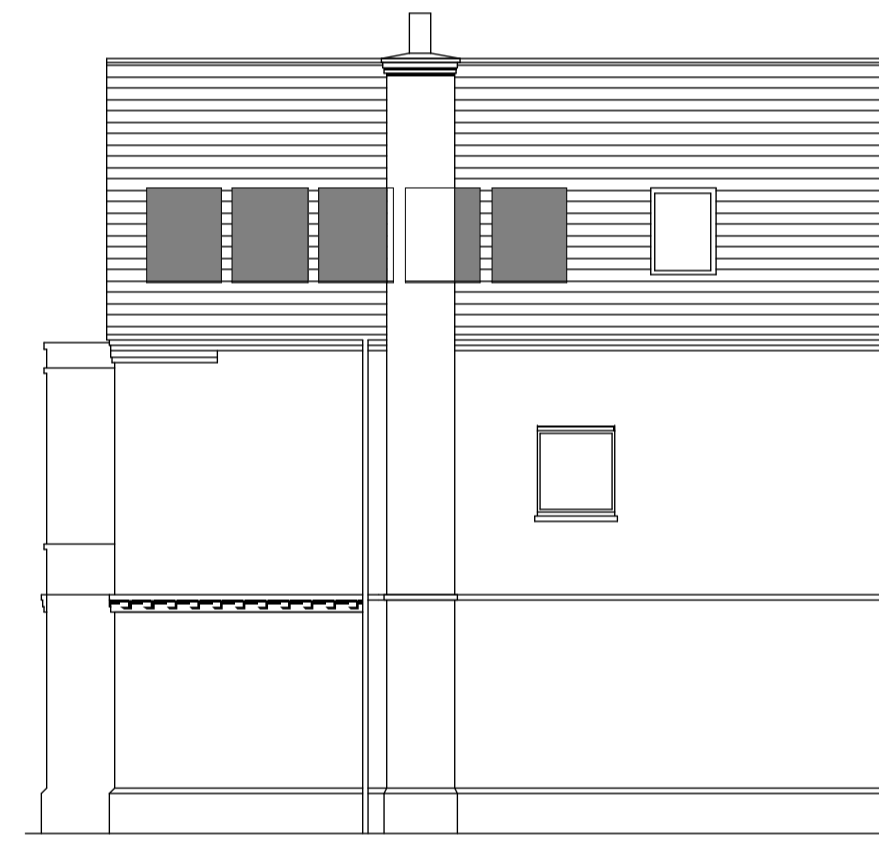
C1 - Southeast Elevation - Plots 68-69



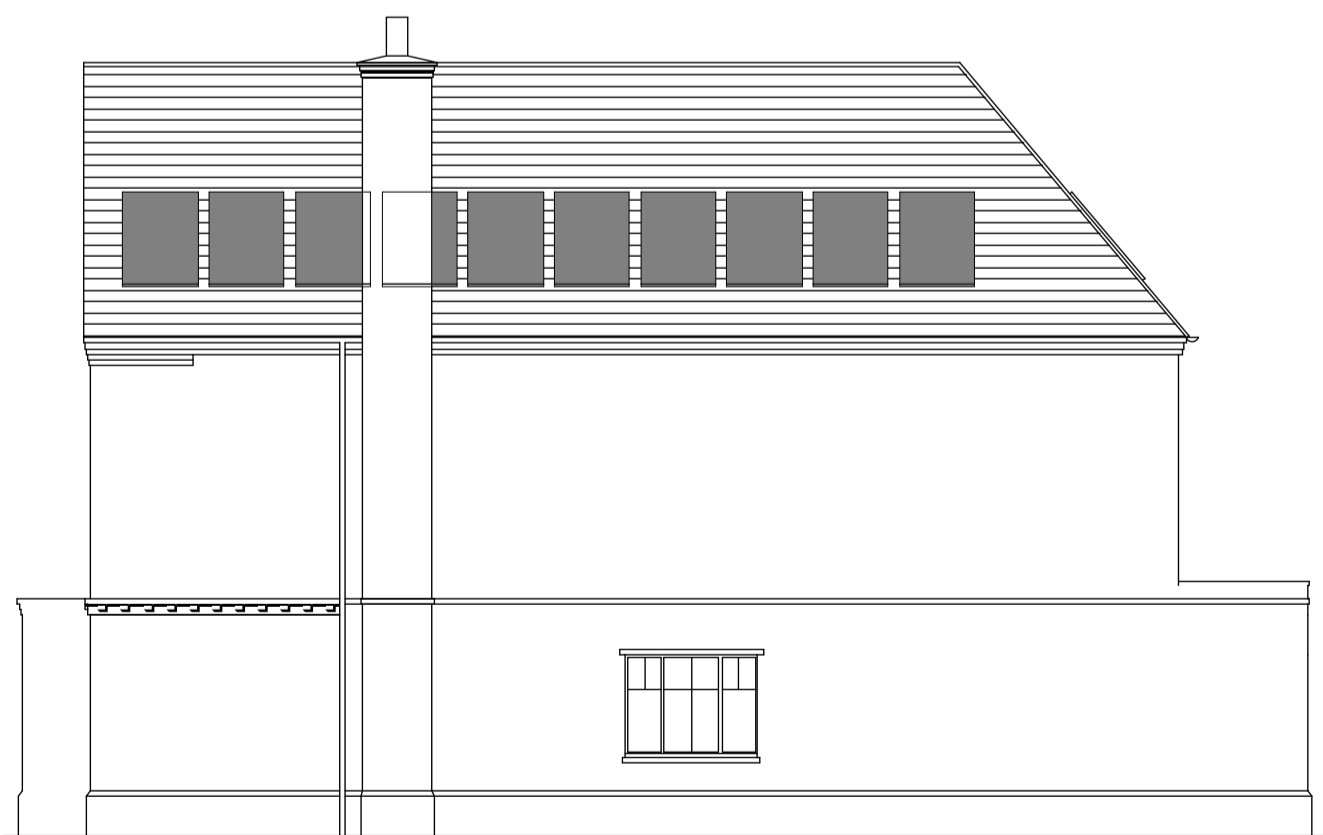
C1 - Southeast Elevation - Plot 44



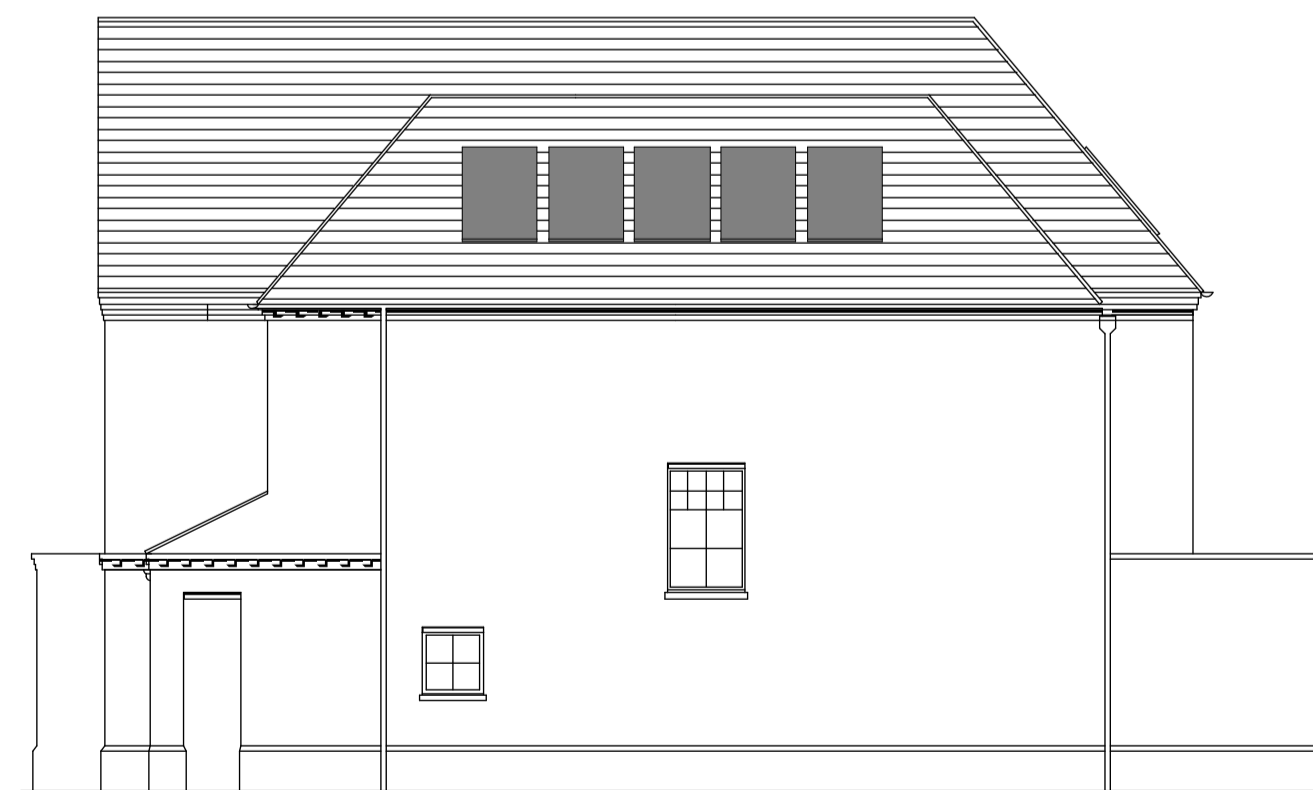
E3 - Southwest Elevation - Plot 56



E2 - Northwest Elevation - Plot 67



F1 - Southeast Elevation - Plot 65



F1 - Southeast Elevation - Plot 64

GENERAL NOTES

Drawing to be read in conjunction with engineers the latest revision of:
 Drawing - Site_Pre_01 and document - 10594 Latchmere House
 Surrey PV Proposal by South-Facing

1640 x 992 x 40mm Solar Panel
 Surface fixed to pitched roof

PLANNING ISSUE

Rev	Description	Issued	Drawn	Checked
-	Planning Issue	12/05/2016	SC	MB
P1	Preliminary Issue	23/03/2016	EL	SC

Client
Berkeley Homes West London
 Project
Latchmere House
Church Road, Richmond TW10 5HH
and
Latchmere Lane, Kingston KT2 5NX
 Drawing
Solar Panel Layouts - Sheet 2

Scale	Date	Drawn	Checked
1:100 @ A1	Mar '16	EL	SC

BrookesArchitects
 Upstairs at The Grange, Bank Lane,
 London SW15 5JT
 T 020 8487 1223
 F 020 8876 4172
 E info@brookesarchitects.co.uk
 www.brookesarchitects.co.uk

Drawing No.	Rev No.
4721 3 007 -	