

SURVEY OF TREES AND TREE WORKS AT FORMER SORTING OFFICE, TWICKENHAM

Tree No.	Species	Branch Spread (m)			Stem diameter (cm)	Height of crown clearance (m)	Height of first branch (m) and direction (compass point)	Age class	Category grading	Estimated remaining contribution (yrs)	Action
		N	E	S							
1	Group of Ash and Sycamore	14av	5av	45av	3	4S	MI	C2	>10	Remove	
2	Group of Sycamore	11av	4av	35av	2	2N	Y	C2	>10	Remove	
3	Group of Goat Willow and Sycamore saplings	7av	2av	15av	0	-	Y	C2	>10	Remove	
4	Group of Ash	9av	3av	10av	0	-	Y	C2	>10	Remove	
5	Ash	17	4av	40e	3	3N	Y	C1	>10	Remove	
6	Group of mainly Ash	17av	7av	40av	3	5E	MI	B2	>20	Remove	
7	Group of Ash, Sycamore and Goat Willow	12av	5av	15av	0	-	Y	C2	>10	Coppice stems to allow replacement of fence.	
8	Group of Ash, Sycamore and Goat Willow	9av	4av	10av	0	-	Y	C2	>10	Coppice stems to allow replacement of fence.	

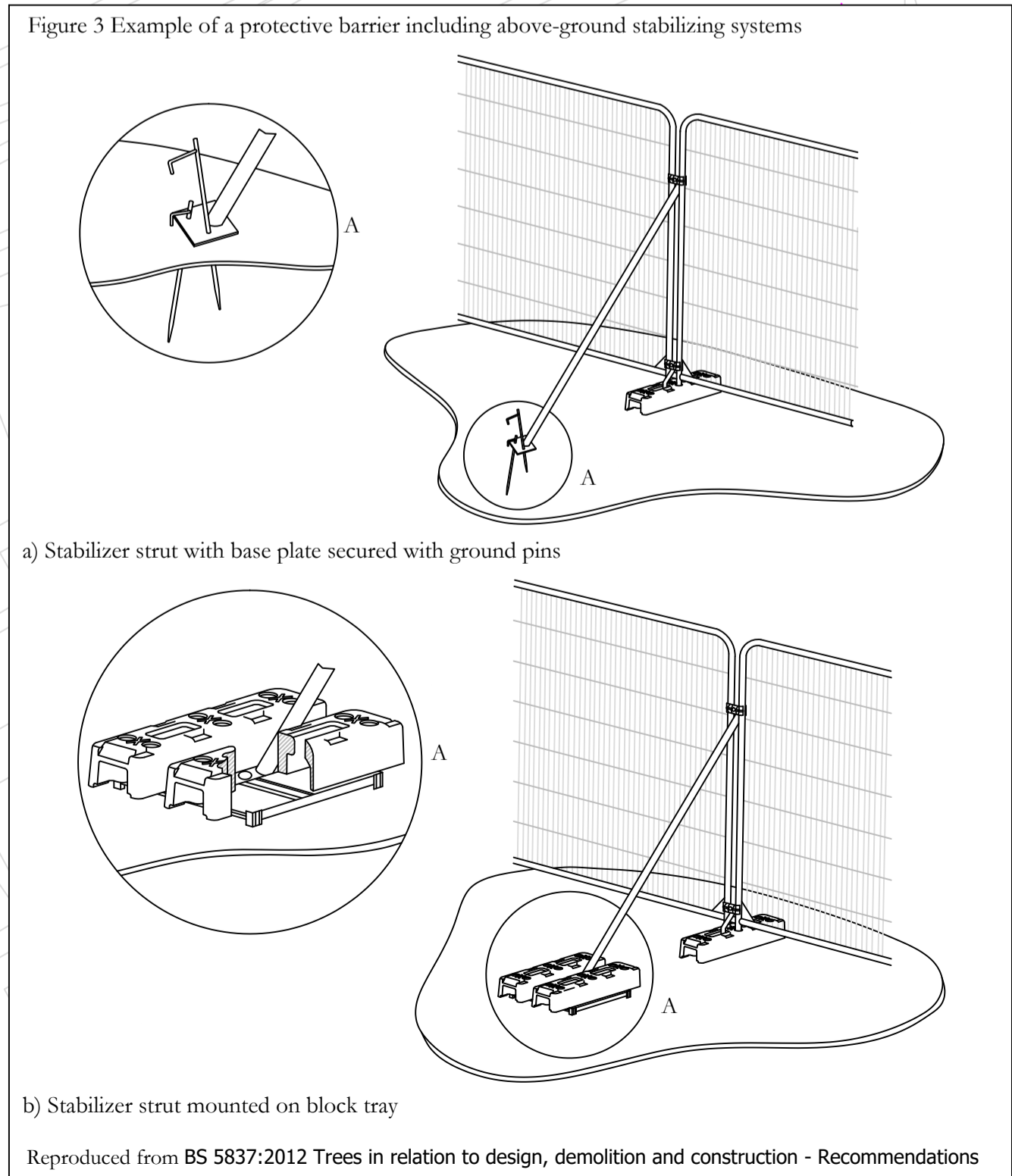
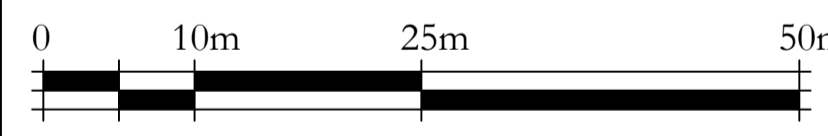
Key to Schedule of Trees

Column Heading	Explanation
TPO No.	If applicable and where known
Tree No.	Unique number corresponding with number on plan
Species	English names
Ht (m)	Height in metres
Branch Spread	Crown radius in metres to cardinal points of the compass
Stem Dia	All measurements conform to Annex C of BS 5837:2012
Height of crown clearance	Single stem - Stem diameter in centimetres measured at 1.5m above ground level.
Height of first major branch and direction of growth	Multi-stemmed tree with 2 to 5 stems - Diameter of each stem
Branch and direction of growth	Multi-stemmed tree with more than 5 stems - Average stem diameter and number of stems
Abbreviations as suffix to a dimension	Height in metres between the ground and underside of canopy
Age Class	Height from ground level to base of first major branch and the approximate direction of growth
Category grading and Estimated remaining Contribution (yrs)	Suffix 'v' denotes an estimated dimension Suffix 'av' denotes an average dimension
Estimated remaining contribution	Age Class definitions: Y = less than one third natural life span spent MI = between one third and two thirds natural life span M = greater than two thirds life span completed OM = overmature V = veteran
Condition	Summary of BS 5837:2012 categorisation:
Tree Works	1. Trees unsuitable for retention: U = those in such a condition that they cannot realistically be retained as living trees in the context of the current land use for longer than 10 years
	2. Trees to be considered for retention: A1, 2 or 3 = trees of high quality (substantial contribution >40 yrs) B1, 2 or 3 = trees of moderate quality (significant contribution >20 yrs) C1, 2 or 3 = trees of low quality (but adequate, ie >10 yrs or young trees - until new planting can be established)
	Useful estimated remaining contribution of the tree or tree group
	Brief description including physiological and structural defects
	Works required to be undertaken to the trees to facilitate the construction of remediate a defect encountered during the survey



- Key:**
- Existing site features
 - Proposed structures
 - Trees retained
 - Trees removed
 - Trees to be coppiced
 - Site hoarding or boundary fence to act as tree protective barrier. To be erected prior to demolition and retained throughout construction process. Alternative barrier style, if needed, shown in Figure 3.

Rev B 03.06.16 AP
Retain Ash and Oak.
Rev A 13.05.14 jtk
Figure 3 added and improvements made.



Note:
The original of this drawing was produced in colour - a monochrome copy should not be relied upon.
Proposed layout based on Buller Welsh Chartered Architects drawing number 12.035-DW-001.B.

CLIENT:	St James
PROJECT:	Royal Mail Site, Twickenham
TITLE:	Tree Protection Plan
DRAWING NUMBER:	7720/02 Rev B
STATUS:	For Information
DATE:	May 2014
DRAWN BY:	ML
CHECKED BY:	JTK
Do not scale from this drawing. All dimensions to be checked on site.	
The copyright of this document resides with Ian Keen Limited unless assigned in writing by the company.	
<p>Consultants for Trees, Landscapes and Nature Conservation</p> <p>Redlands Farm, Redlands Lane, Woburn, Farnham, Surrey GU10 5AS Telephone: 01252 859096 Facsimile: 01252 851702 Email: mail@ieerings.co.uk</p>	