

MASTERPLAN

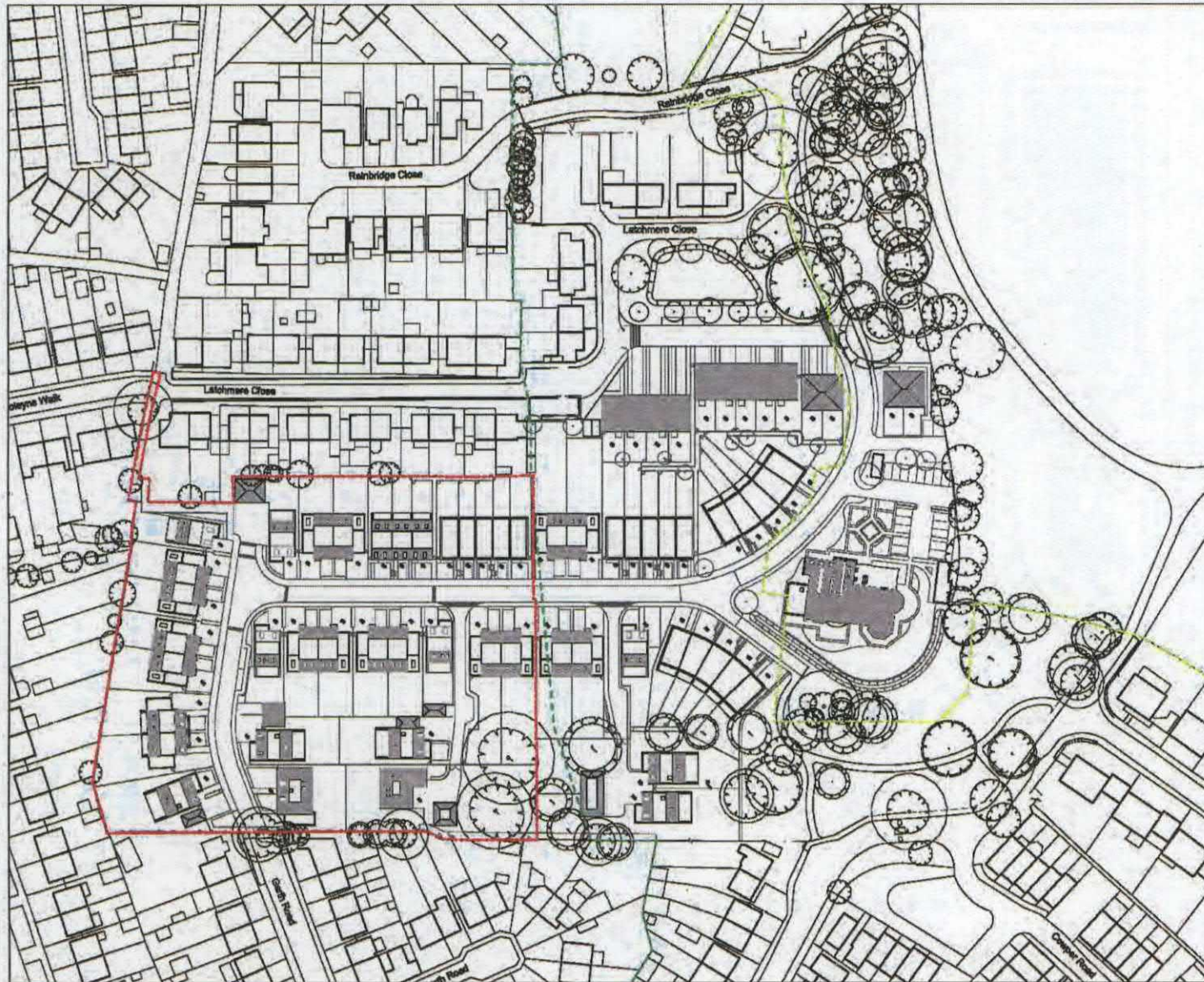
Richmond - Option 3a

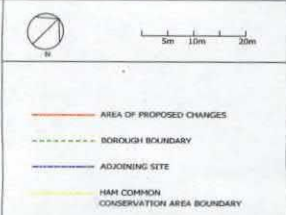
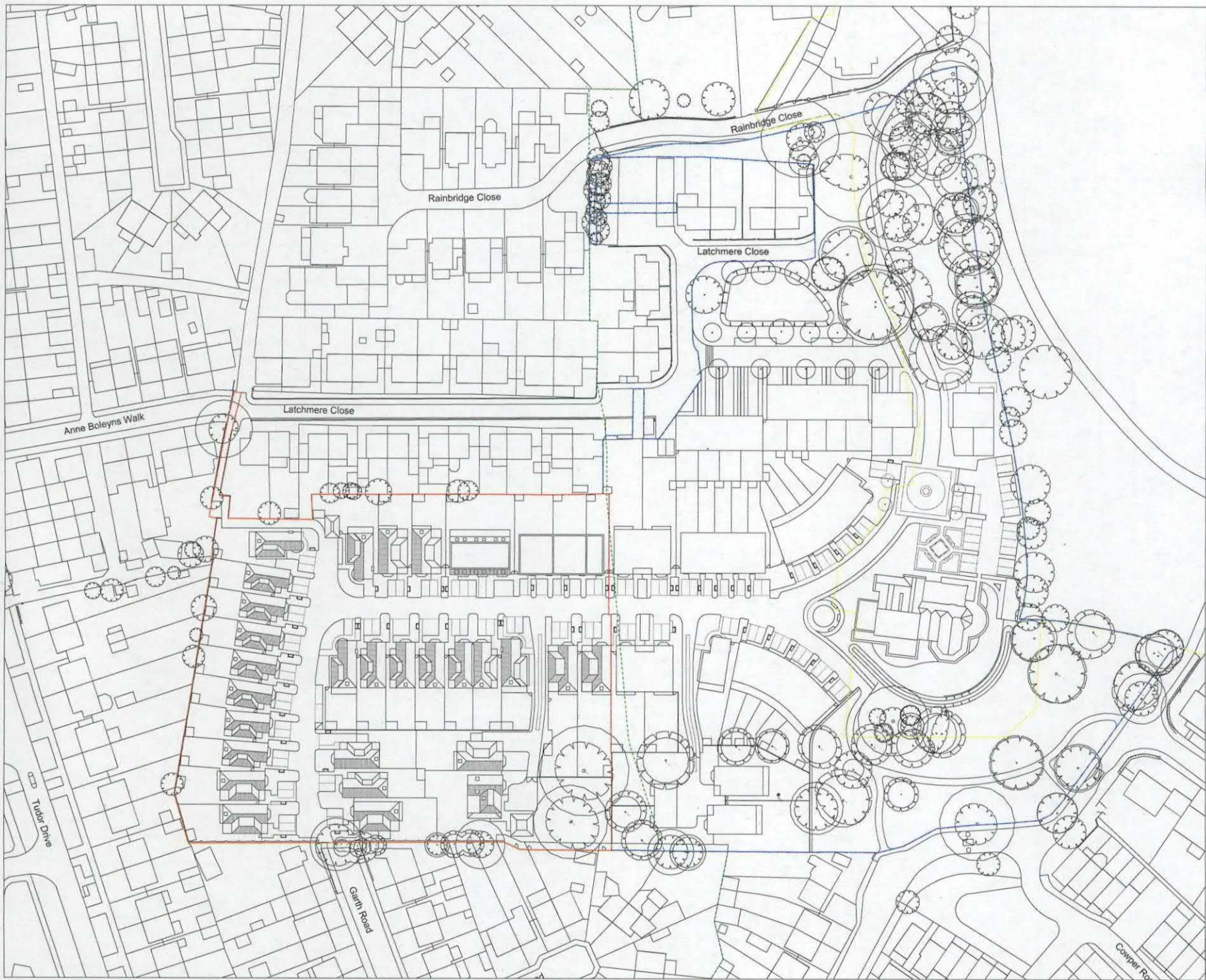
Footprint of consent shown in green ———

MASTERPLAN

Kingston
Consented Layout

1:1250





16/12048
 Venalor to
 damp
 No additional
units

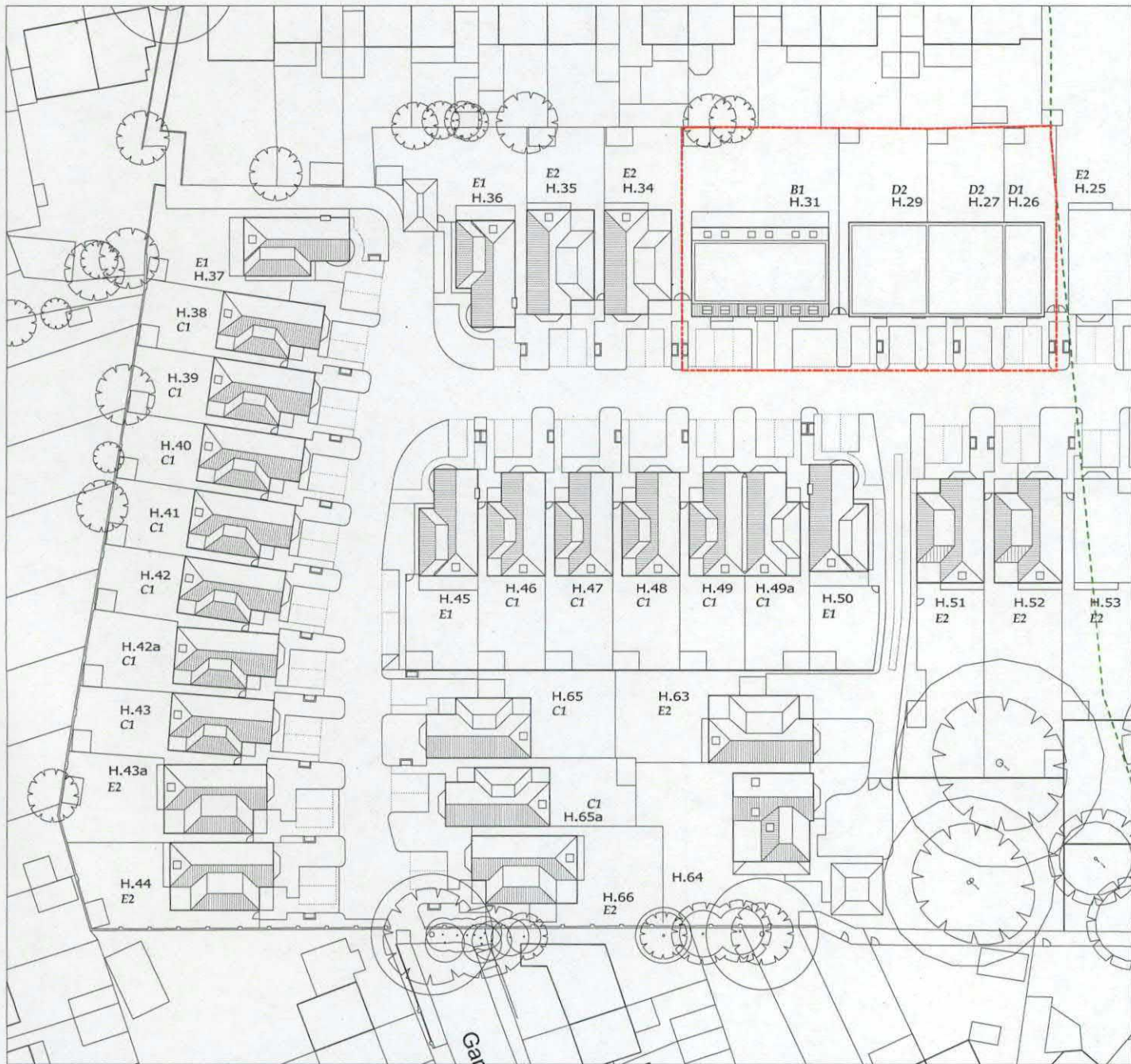
LATCHMERE HOUSE	1:500 (A1) 1:1000 (A2) JAN 2016
PROPOSED SITE PLAN	DRAWING NO. BK104-P-101_02

16/120491
Addendum 4

MASTERPLAN

Kingston

Previous layout



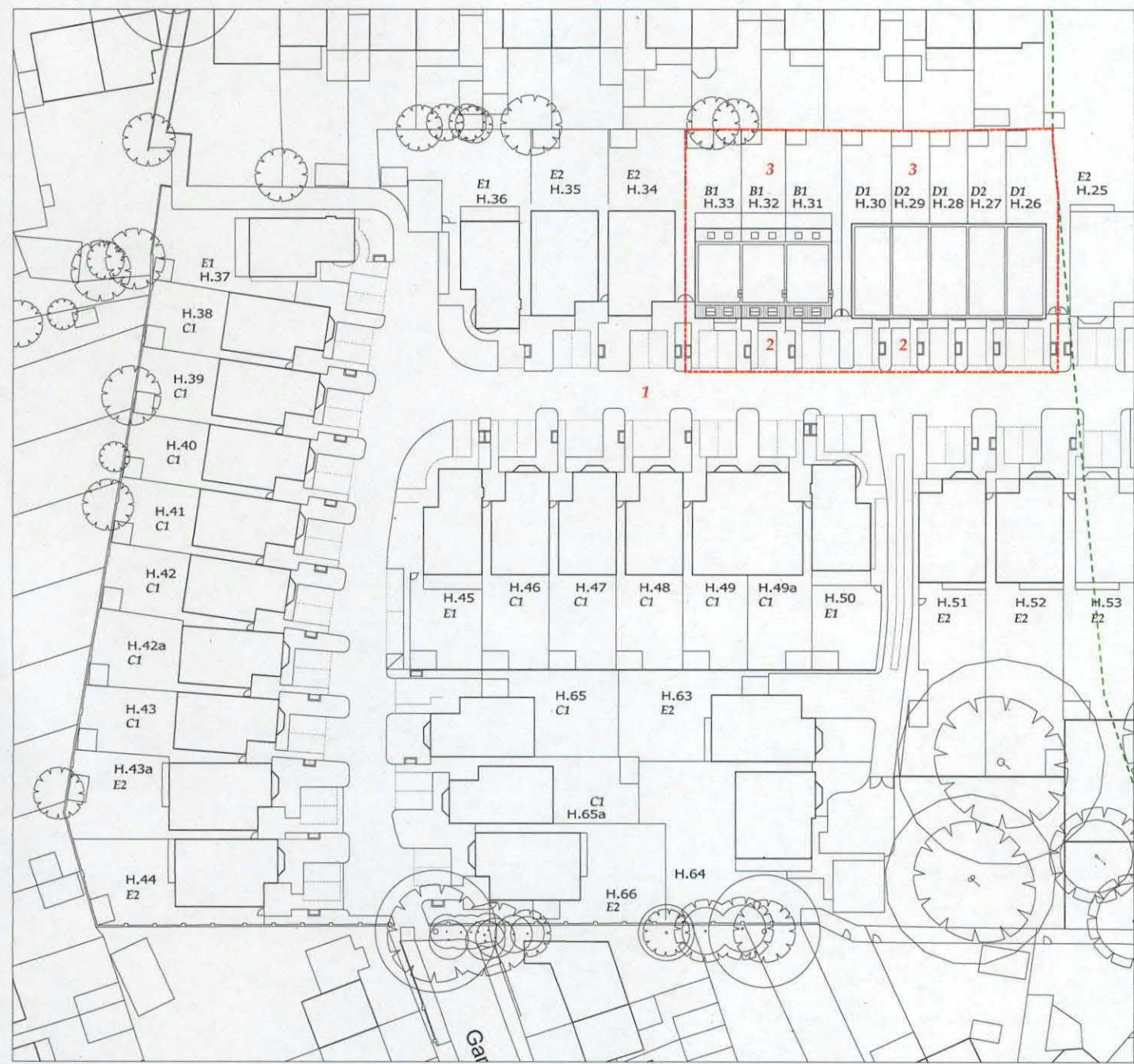
16/12049
Addition 4

MASTERPLAN

Kingston

Changes to layout

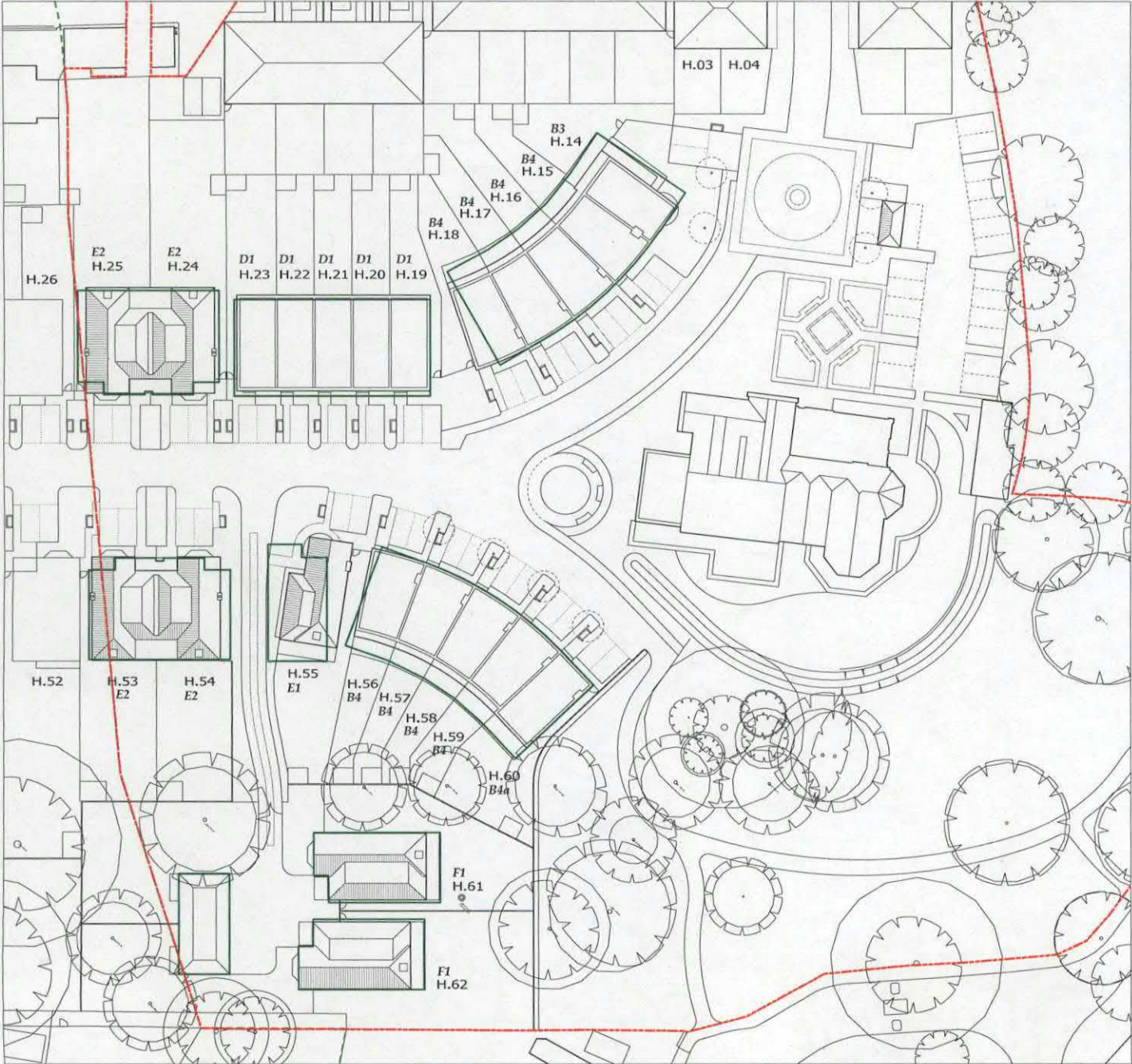
1. Layout of the Latchmere house site unchanged
2. Slight alterations to pathways to allow access to extra houses
3. Rear gardens subdivided

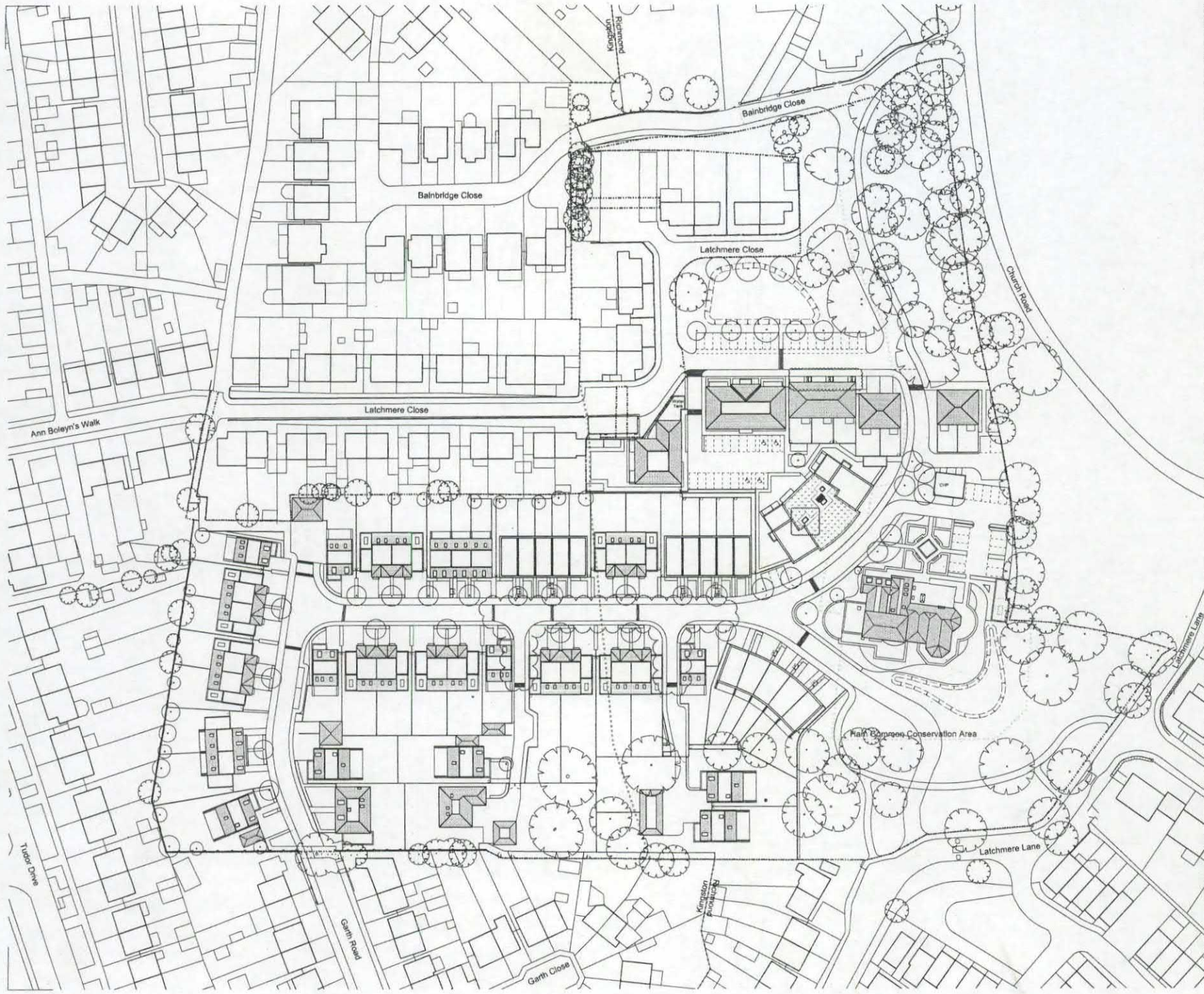


MASTERPLAN

Richmond

Previous consent outlined in green





General Notes:
 Do not scale from this drawing. Use correct dimensions.
 Check any dimensions on site. Issues from this plan.
 This drawing is copyright of Matthew Ashford Architects Limited



Key

- Site Boundary
- Borough Boundary
- Ham Common Conservation Area Boundary

Review

01. Related drawings to include road marked. Code store within 12/05/14 VW 05
 02. Approved for Planning 20/12/13 VW 05
 Rev: Description Date Drawn: KAF/SL

MMA Architects
 The architects design studio
 27 Ferry Road, Ladbroke Grove, London W11 2PP
 Tel: 020 723 3333
 Email: info@mmaarchitects.com
 Website: www.mmaarchitects.com

Scale: 0 5 10 20 40m

Client: **Berkeley Homes (Central London) Ltd**
 Project: **Latchmere House Scheme 2**

Drawing Title: **Proposed Site Plan**

Project No.	Drawing No.	Revision	Scale	Date
01101	01		1:500 @ A1	Oct 2013
Drawn by: VW	Checked by: 05	Drawing Status: Planning		